

EX J

SOthebys

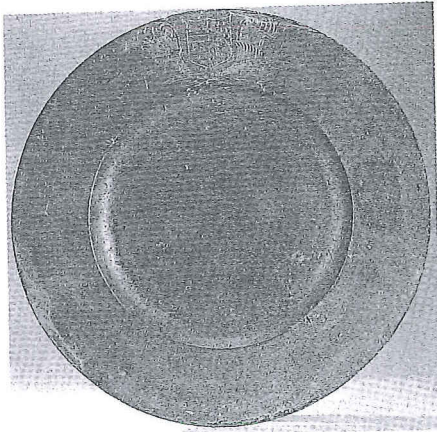
FOUNDED 1744

Furniture, Paintings, Metalwork,  
Works of Art, Pottery and  
Porcelain, Carpets and Rugs, Glass,  
Ceramics, Toys, Bears and Dolls

SUSSEX


WEDNESDAY 3RD JUNE 1992  
TO THURSDAY 11TH JUNE 1992





608

PEWTER

608  A BROAD-RIMMED CHARGER, Charles II, circa 1670, with engraved coat of arms and a row of indistinct 'hallmarks' to rim, 55cm.; 21<sup>7</sup>/<sub>16</sub>in. diam. £400-600

609 A CISTERN AND BASIN BY HEINRICH SCHROTZ OF FREIBERN, late 18th Century, with lion mask spout and domed cover, 26cm.; 10in.; above canted rectangular basin, 37cm.; 14<sup>1</sup>/<sub>2</sub>in. wide £250-350

610 A LIDDED GUERNSEY MEASURE, with heart-shaped lid and twin acorn thumbpiece, 18cm.; 7in.; and a Dutch pear-shaped Urn and Cover, with turned wood finial and three cabriole legs, 33cm.; 13in. (2) £150-200

611 A FLEMISH SPOUTED PEAR-SHAPED FLAGON, 19th Century, with domed lid and shell thumbpiece, 23cm.; 9in.; and another similar (2) £200-300

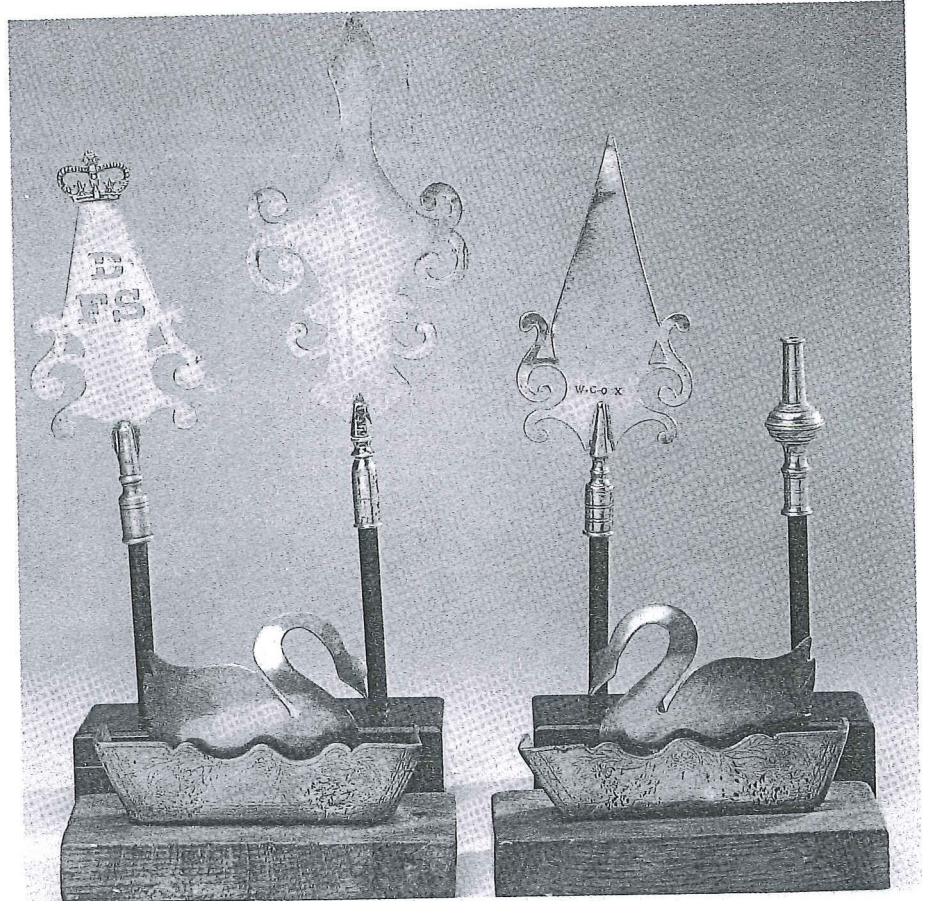
612 A GEORGIAN OVAL STRAINING PLATE, circa 1780, with engraved coat of arms to rim, 47cm.; 18<sup>1</sup>/<sub>2</sub>in.; and an oval Hot-Water Dish, 53cm.; 21in. (2) £100-200

613 A COLLECTION OF PLATES AND DISHES, Continental, 19th Century, comprising: sixteen side plates by various makers, 21cm.; 8<sup>1</sup>/<sub>16</sub>in. diam. average, and three bowls, 29cm.; 11<sup>1</sup>/<sub>2</sub>in. diam. average; and a reproduction Candlestick (20) £140-180

614 A PAIR OF CHARGERS, Georgian, 18th Century, each with single-reeded rim, indistinct touch and initials to rim, 42cm.; 16<sup>1</sup>/<sub>2</sub>in. £200-300

615 A CRESTED TAPPIT HEN, late 18th Century, of usual shouldered form, 31cm.; 12in. £350-450

616 A PAIR OF CANDLESTICKS, English, circa 1830, with domed base and baluster stem, 23cm.; 9in.; and a similar pair, 22cm.; 8<sup>1</sup>/<sub>2</sub>in. (4) £180-220



639

640

617 A CHARGER, English, 18th Century, ownership triad and quality marks adverso, 45.5cm.; 18in. diameter £120-180

618 A COLLECTION OF THREE DISHES, Continental, late 18th Century, various makers and ownership stamps to rim, 32cm.; 12<sup>1</sup>/<sub>2</sub>in. diam. on average £150-200

619 A SET OF THREE TANKARDS, Victorian, mid-19th Century, each with thickened lip and straight-sided body, graduated from quart to half-pint (3) £150-200

620 A DISH BY JOHN DUNCOMBE, circa 1780, 41cm.; 16in.; another Dish, dated 1801 to rim, 38cm.; 15in. diam.; and an oval Dish by Bush and Co., circa 1790, 52cm.; 20<sup>1</sup>/<sub>2</sub>in. (3) £200-300

621 MISCELLANEOUS PEWTER, including a Britannia-metal biscuit barrel, mugs, beakers etc. (26) £150-200

622 A BRITANNIA-METAL OVAL MEAT DISH, with cast side handles, 63cm.; 25in. wide; and an oval Jambonier and Cover, 51cm.; 20in. wide (2) £200-300

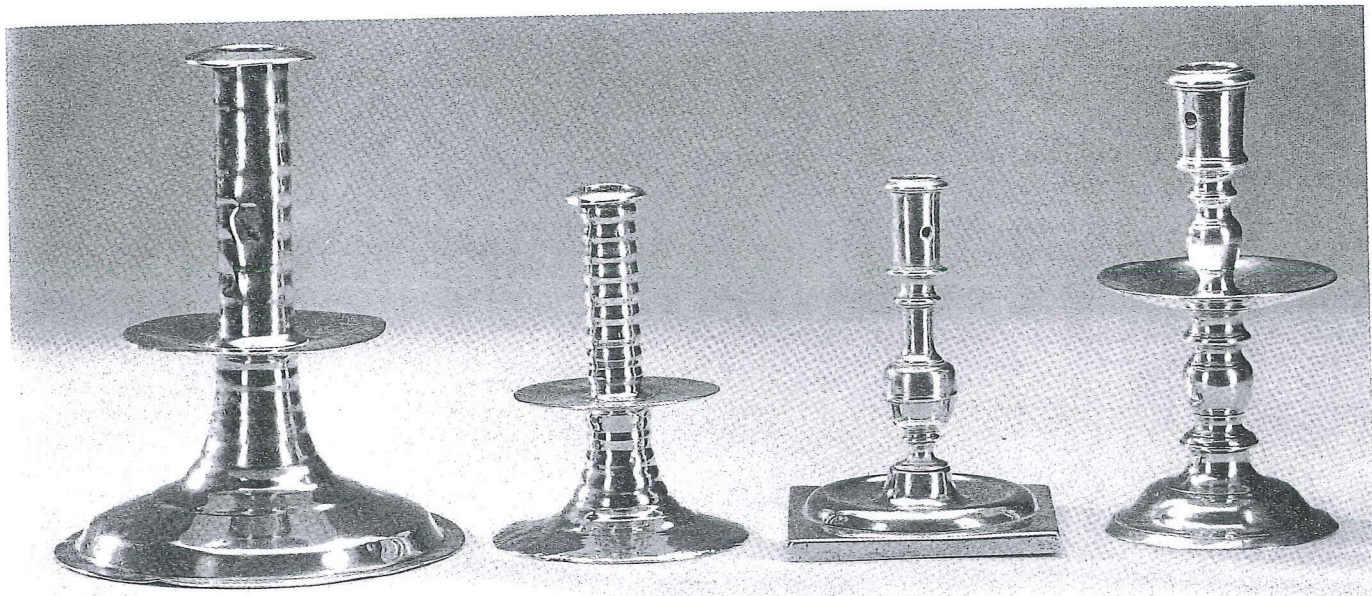
623 A COLLECTION OF SEVEN ASSORTED TANKARDS, 19th Century, comprising two one-quarts and five one-pints (7) £200-300

624 A COLLECTION OF FOURTEEN BALUSTER MEASURES, the largest of pint capacity, and including one in brass (14) £150-200

625 A BOWL BY THE MAKER T.B., circa 1680, ownership triad to rim and touch adverso (Cott. O.P. 5468), 25cm.; 10in. diam.; and a similar Bowl with the same triad by the maker T.W. £150-200

626 A COLLECTION OF FIVE PINT TAVERN MUGS, 19th Century; three half-pints; and a Continental lidded pear-shaped spouted Tankard (9) £150-200

627 A COLLECTION OF EIGHT PEPPERS, 19th Century, two salts and two ladles (12) £100-150



652

655

654

657

628 A COLLECTION OF FOUR PLATES BY SAMUEL DUNCOMBE, circa 1780, 23cm.; 9in. diam.; two Plates by John Home, 18th Century; and four further assorted Plates £150-250

629 A PAIR OF CHARGERS BY SAMUEL ELLIS, circa 1730, the plain rims with ownership triad initials, 46cm.; 18in. diam. £250-350

BRASS, COPPER AND OTHER METALWORK

630 A DUTCH BRASS OVAL TOBACCO BOX, 18th Century, engraved with figures in a seascape, with flower scrolls, 13cm.; 5 1/4in. wide £150-200

631 A BRASS FIVE-BRANCH CHANDELIER, Dutch, 18th Century design, the ball and baluster stem supporting scrolled branches, 42cm.; 16 1/2in. £500-800

SOLD ON BEHALF OF THE EXECUTORS OF THE LATE MISS SILVIA BURRELL:

632 A BRASS ALMS DISH, Nuremberg, 16th Century, the boss with two thieves from the land of Caanan, the rim with two bands of punches, minor solder repairs, 36cm.; 14in. £300-500

633 A BRASS ALMS DISH, Nuremberg, 16th/17th Century, the boss decorated with Adam and Eve, solder repairs, 38cm.; 15in. £200-300

634 A BRASS ALMS DISH, Nuremberg, 17th Century, the boss with swirled decoration, solder repairs, 37cm.; 14 1/2in. £200-300

635 A BRASS ALMS DISH, Nuremberg, 16th Century, the boss decorated with grape vines, the border with three bands of punches, 40cm.; 15 3/4in. £400-600

636 A BRASS CYLINDRICAL JARDINIÈRE, Dutch, circa 1800, with lion mask ring handles and applied copper coats of arms, 28cm.; 11in. £300-500

637 A BRASS AND COPPER TOBACCO BOX, Dutch, dated 1763, engraved all-over with Historical and Biblical scenes and with ownership details, 18cm.; 7in.; and a brass oval Tobacco Box, Dutch, 18th Century, 15cm.; 6in. (2) £300-400

638 TWO BRASS CLOCKWORK SPIT JACKS, Victorian circa 1850; and three small copper Saucepans with iron side handles (5) £200-300

639 ■ FOUR BRASS FRIENDLY SOCIETY SIGNS, 19th Century, one with pierced initials D.F.S. below a crown on stand, 42cm.; 16 1/2in. overall; another inscribed W. Cox; and two further (4) £400-600

640 ■ A PAIR OF BRASS AND COPPER MANTELPIECE ORNAMENTS, late 19th Century, each in the form of a swan on engraved copper base, 19cm.; 7 1/2in. wide £300-500

641 A BRASS CHANDELIER, Dutch, 18th Century, the ball and baluster stem supporting six later 'S'-shaped branches, 38cm.; 15in. £300-500

642 A NEAR-PAIR OF BRASS CANDLESTICKS, Flemish, 19th Century, each with wide domed base and knopped cylindrical stem, 23cm.; 9in. £150-250

643 A BRASS ASH PAN, Dutch, circa 1800, in the form of a vase with swing handle, 46cm.; 18in. £200-300

644 A PIERCED BRASS CYLINDRICAL LAMP, Dutch, 19th Century, with amber glass panels, 51cm.; 20in. £200-300

645 A BRASS PRICKET CANDLESTICK, Flemish, possibly 17th Century, with ball and baluster stem, 45cm.; 18in.; together with a brass Pricket Candlestick with tripod base, 53cm.; 21in. (2) £550-650

646 A PAIR OF BRASS PRICKET CANDLESTICKS, Flemish, of baroque design, each with tripod angel mask base and foliate carved tapering stem, 43cm.; 17in. £400-600

646(a) A PAIR OF BRASS CANDLESTICKS, English, circa 1720, each with domed base and knopped cylindrical stem with side eject mechanism, 17cm.; 6 1/2in. £120-180

647 A COPPER HARVEST MEASURE, Victorian, circa 1880, four-gallon capacity, 40cm.; 16in.; and a similar one-gallon Measure (2) £300-400

648 A COPPER KETTLE, Victorian, circa 1850, 31cm.; 12in.; a similar smaller Kettle; and two copper Cooking Pots (4) £300-400