

EX I

Days of Sale

WEALDEN ROOM – Tuesday 24th November 1992 at 10.30 am

Oak and Country Furniture,
including the showroom contents from Mary Bellis,
Hungerford, Berkshire

WEALDEN ROOM – Tuesday 24th November 1992 at 3.00 pm

**Primitive Paintings, Textiles, Metalwork
and Works of Art**

On View:

Friday 20th November 1992, 10.00 am–4.00 pm, Saturday 21st November 1992, 9.30 am–12.30 pm,
SUNDAY 22nd NOVEMBER 1992, 2.00 pm–4.30 pm and Monday 23rd November 1992, 10.00 am–4.00 pm

CISSBURY ROOM – Wednesday 25th November 1992 at 10.30 am

**18th and 19th Century Pottery
and British Porcelain**

On View:

Saturday 21st November 1992, 9.30 am–12.30 pm, **SUNDAY, 22nd NOVEMBER 1992, 2.00 pm–4.30 pm**,
Monday 23rd November 1992, 10.00 am–4.00 pm and Tuesday 24th November 1992, 10.00 am–4.00 pm

WEALDEN ROOM – Tuesday 1st December 1992 at 10.30 am

Oriental Carpets and Rugs

On View: Friday 27th November 1992, 10.00 am–4.00 pm,

Saturday 28th November 1992, 9.30 am–12.30 pm and Monday 30th November 1992, 10.00 am–4.00 pm

CISSBURY ROOM – Tuesday 1st December 1992 at 2.00 pm

Chinese Snuff Bottles

On View: Saturday 28th November 1992, 9.30 am–12.30 pm,

Monday 30th November 1992, 10.00 am–4.00 pm and Tuesday 1st December 1992, 9.30 am–1.00 pm

which will be sold
by

Frick Art Reference Library

SOTHEBY'S
FOUNDED 1744

Sussex

Summers Place, Billingshurst, West Sussex RH14 9AD

Telephone: (0403) 783933

Fax: (0403) 785153

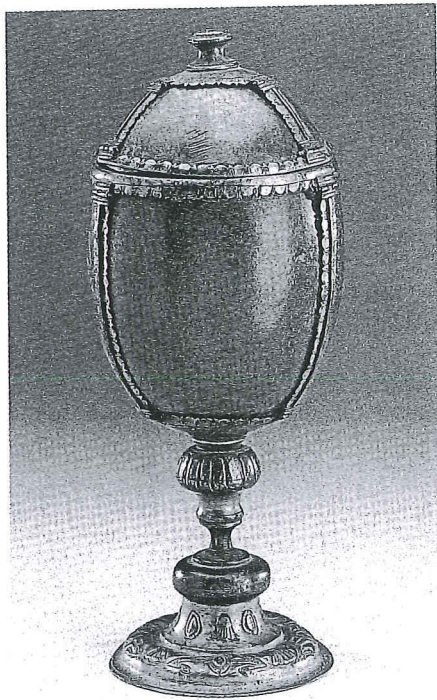
Fax for Absentee Bids only: (0403) 785332

Illustrated Catalogue £10.00

Sotheby's London: Registered at 34-35 New Bond Street, London W1A 2AA
No. 1222607

Back Cover: Lots 907, 933, 937, 963, 997

SPECIAL VIEWING
Sunday, 22nd Nov.
2.00 to 4.30 pm



585

585 **□ A COCONUT CUP, 17th Century**, with gilt-copper mounts on a baluster knopped stem, 28cm.; 11in £400-600

586 **A WROUGHT IRON AND FRUITWOOD STANDING RUSHLIGHT**, the nip with twist turn stem on fruitwood ratchet mechanism stem above a stool base, 134cm.; 53in £400-600

587 **A SCANDINAVIAN OVAL PINE BRIDES' BOX, early 19th Century**, with chip-carved decoration, 27cm.; 10½in wide, and a treen wig stand, (2) £180-220

588 **TWO CARVED AND PAINTED WOOD DECOY DUCKS, English late 19th Century**, each with glass eyes, *The larger* 30cm.; 118in. long £200-300

589 **A LEATHER BOUND WOOD RECTANGULAR CASKET, Spanish 17th Century**, with iron mounts, *damages*, 39cm.; 15½in wide. £200-300

590 **□ A LEATHER RECTANGULAR PICTURE, Late 18th Century**, depicting a seated rider leading another horse, 21 by 31cm.; 12cm.; 8½ in gilt wood frame £300-500

591 **A MARQUETRY PICTURE, Italian 19th Century**, depicting a curate being brought gifts of food by a peasant lady, 19 by 26cm.; 7½ by 10in £250-350



590

THE PROPERTY OF MARY BELLIS ANTIQUES

592 **A STAINED GLASS PANEL, Swiss or South German**, painted with a shield and chickens, 26 by 17cm.; 10 by 6½in; and another painted with the head of a girl, 29 by 19cm.; 11½ by 7½in £200-250

593 **A STAINED GLASS RECTANGULAR PANEL, Dutch dated 1662**, painted with a cartouche of sailing ships flanked by putti, flags and trophies, 79 by 58cm.; 2ft 7in by 1ft 11in £300-400

OTHER PROPERTIES

594 **A PAINTED WOOD SLEDGE, North European, 97cm.; 3ft 2in long,** £100-200

595 **□ A CARVED AND PAINTED WOOD MODEL SALMON, circa 1903**, on black painted pine backboard inscribed 'WEIGHT 44 LBS, LENGTH 48in, GIRTH 26in CAUGHT BY CAPTAIN J P LAW SEPT 1903' £1,800-2,200

596 **A STUFFED PRESERVED PERCH BY COOPER & SONS, circa 1946**, in glazed bow front case with black and gilt lining inscribed 'PERCH 2lbs 14 ozs. March 1946' with original label, 51 cm.; 20in wide £600-900

597 **A CARVED AND PAINTED WOOD STAG'S HEAD**, with five point antlers, 89cm.; 2ft 11in overall, and a painted wood plaque inscribed 'This Stag was roused in Brooke Wood & Kill'd after a very fine Chace of five hours & half, by the Hounds of J. Bidlake Herring Esqr. the 17th day of September 1780' £300-500

Provenance: Northwood Manor, South Devon. Brookwood is on O/S map 202 approx one mile North of Buckfastleigh.

598 **A COLLECTION OF SIX ASSORTED DECOY BIRDS, circa 1900 and later**, comprising two ducks and four pigeons, £150-250

599 **A PAINTED WOOD DECOY GOOSE, late 19th Century**, of Scottish estate type with hollowed out body, 28cm.; 11in £100-200

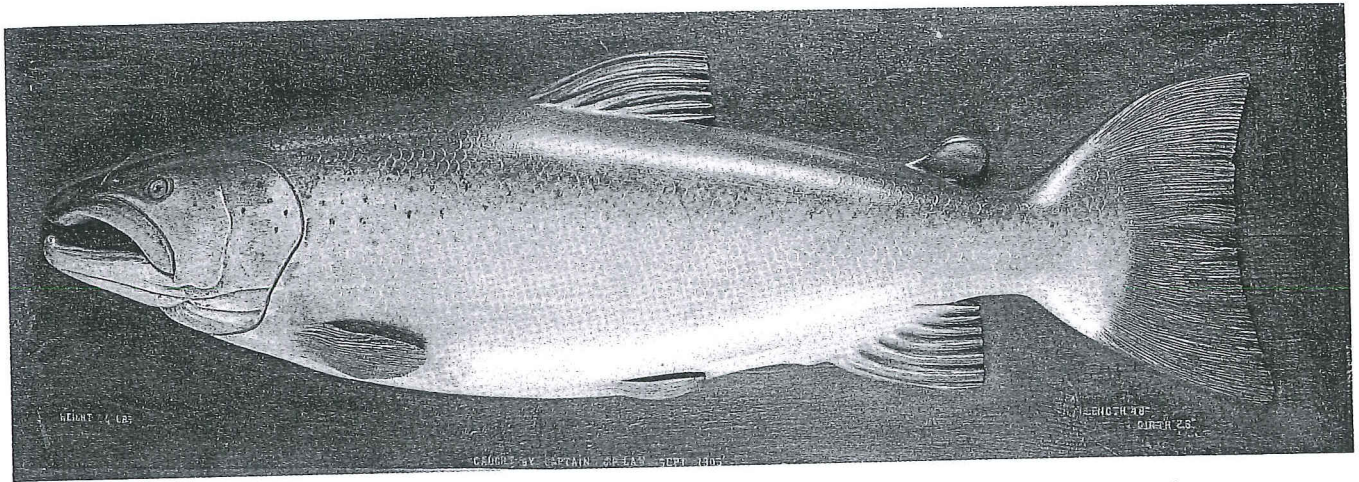
600 **A CHILD'S WICKER WORK PRAM, Victorian, 36cm.; 14in**, together with a rag doll, £200-250

601 **A PAINTED WOOD ARTICULATED TOY FIGURE, late 19th Century** 26cm.; 10in £100-150

602 **A SCRIMSHAW ENGRAVED SWORDFISH TUSK**, decorated with vases of flowers, an anchor and inscribed *SHIP LION 1821*, 66cm.; 26in. £300-400

PEWTER

603 **TWO NORMANDY FLAGONS, 19th Century**, each with inscribed ownership to handle, 27cm.; 10½in; and 22cm.; 8½in. £140-200



595

604 **A NORMANDY FLAGON, 19th Century**, of usual shouldered form with heart shaped lid and twin acorn thumbpiece, 26cm.; 10 $\frac{1}{2}$ in. and a similar smaller flagon, 20cm.; 8in. (2) £140-200

605 **A SWISS GLOCKENKANNE, late 18th Century**, the cylindrical body with a band of relief cast grape vines, screw on ring top and cylindrical front spout, 36cm.; 14in.; £200-400

606 **A CONTINENTAL CHALICE**, with domed foot and screw-in ball knopped stem, 16.5cm.; 6 $\frac{1}{2}$ in.; and a small Continental chalice, 17th Century, with touch of hammer flanked by initials L.?. 9cm.; 3 $\frac{1}{2}$ in.; together with **A Georgian Chalice, circa 1800**, with plain cup shaped bowl engraved with ownership initials 14cm.; 5 $\frac{1}{2}$ in.; and a 'U' shaped beaker 13cm.; 5in (4) £200-300

607 **A DOMED LID TANKARD, early 18th Century**, the straight sided tapering body with a single girdle, and rams horn thumbpiece, touch in base of a bird possibly that of Adam Banck (O.P. 222A). 19cm.; 7 $\frac{1}{2}$ in. £500-800

608 **A TWIN EARED PORRINGER, Continental, circa 1700**, touch of I ? H R above a rose, both ears damaged, the bowl 13cm.; 5in diam; together with a **Twin Handled Loving Cup**, 18th Century 8cm.; 3in. Also two later loving cups with scroll handles, th taller 16cm.; 6 $\frac{1}{4}$ in (4) £200-300.

609 **A NARROW RIMMED TAZZA, circa 1720**, with domed foot and touch of William ?, 26cm.; 10in diam. £140-200

610 **A DOMED FOOT TAZZA, circa 1700**, stamped G R B to rim, on gadrooned knopped stem and domed foot, 21cm.; 8 $\frac{1}{4}$ in diam; and another similar, damaged, 21.5cm.; 8 $\frac{1}{2}$ in. (2) £160-220



605

607

616

611 **A CHARLES II BROAD RIM DISH, circa 1670**, by the maker M N, hallmarks to rim and indistinct touch adverso, 42cm.; 16 $\frac{1}{2}$ in; the rim 8cm.; 3in. £220-280

612 **A STUART NARROW RIM PLATE, circa 1680**, with hallmarks by thr maker R T, 23cm.; 9in; and another similar, damaged, 23cm.; 9in. (2) £120-200

613 **A STUART NARROW REEDED RIM PLATE, circa 1680**, touch of the maker T.S.(O.P.5951), 21cm.; 8in; and another similar, 20cm.; 8in. £130-200

614 **AN UNUSUAL BOWL WITH SINGLE REEDED RIM AND BUMPY BOTTOM**, touch appears to be that of Richard White 1695-1750 (O.P.5097) although the bowl would appear to be earlier, 26.5cm.; 10 $\frac{1}{2}$ in. £150-220

615 **A COLLECTION OF THREE BOWLS, late 18th/early 19th Century**, the largest 23.5cm.; 9 $\frac{1}{4}$ in; and a commode pot, 24cm.; 9 $\frac{1}{2}$ in, (4) £100-200

616 **A WILLIAM & MARY OR QUEEN ANNE FLAGON, circa 1700**, with straight sided tapering hammered body, scroll thumbpiece and domed cover, the cover with a large hole and other damage, 29cm.; 11 $\frac{1}{2}$ in. £250-350



631

645

632

634

647

617 **FOUR BALUSTER MEASURES, late 17th/early 18th Century**, comprising a Quart, two pint and a gill, all missing lids, one pint still with 'bud' thumbpiece, the quart 19cm.; 7½in £220-350

618 **A SWISS BOWL BY GOLDNER OF LAUSANNE, early 19th Century**, with a band of relief cast leaf decoration, 10.5cm.; 4¼in; a half pint cup with single loop handle, and a cup shaped bowl on foot 15cm.; 6in. (3). £80-120

619 **A COLLECTION OF SEVEN WINE CUPS OR EGG CUPS**, A pair inscribed Thompson 1805, 6.5cm.; 2½in; and five further of similar shape each on foot, 7 to 4.5cm.; 2¾ to 1½in; together with **Three wine cups or salts, circa 1800**, each on domed foot with reeded rim 7cm.; 3¾in; and a double ended cup measure 8cm.; 3in £170-240

620 **A COLLECTION OF SEVEN PEPPERS OR CASTORS, 18th/19th Century**, 13 to 10cm.; 5 to 4in.; and two holy water cruets, 12cm.; 4¾in; (9). £150-250

621 **A COLLECTION OF FIVE CUP SALTS, circa 1770-1800**, each with waisted socle on domed foot with reeded rim, 8cm.; 3in high on average; together with a pair of cup salts by W J Englefield, early 20th Century, 4cm.; 1½in; three octagonal base cup salts and a pair of round based cup salts 6cm.; 2¼in (12) £240-320

622 **A CONTINENTAL CANDLESTICK, 18th Century**, with faceted domed base and octagonal vase stem, 18cm.; 7in; and a faceted stem candlestick with later foot, 20cm.; 8in. (2); together with a pair of **Corinthian Column Candlesticks of George III design**, 24cm.; 9½in; and a pair of tapersticks, each with baluster stem, circa 1840, 10cm.; 4in (6) £200-300



646

623 **TWO SIMILAR TREASURY INKSTANDS, circa 1800**, each with double hinged rectangular cover, 16cm.; 6½in. wide. £140-200

624 **A DUTCH STANDISH BY THE MAKER A I, Amsterdam, mid 18th Century**, with single well and domed cover, a sand pot and a drawer on plinth base, 13cm.; 5in. wide. £80-120

625 **A DUTCH TOBACCO JAR AND COVER, early 19th Century**, canted rectangular with domed cover and urn finial on four rococo swirl feet, 16.5cm.; 6½in. £140-220

626 **A LIDLESS TAVERN MUG, late 18th Century**, straight-sided body with a town stamp, and handle with ball terminal, 9cm.; 3½in; and a similar ½ pint mug with Wm III, Wm IV and VR capacity stamps, £140-200

627 **A SWISS GLOCKENKANNE, late 18th Century**, the cylindrical flask with a cylindrical front spout, 28cm.; 11in. £100-200

628 **A COLLECTION OF TEN ASSORTED PLATES, Continental late 18th Century and later**, including a set of four by the maker F.K. 24cm.; 9½in diam on average £200-250

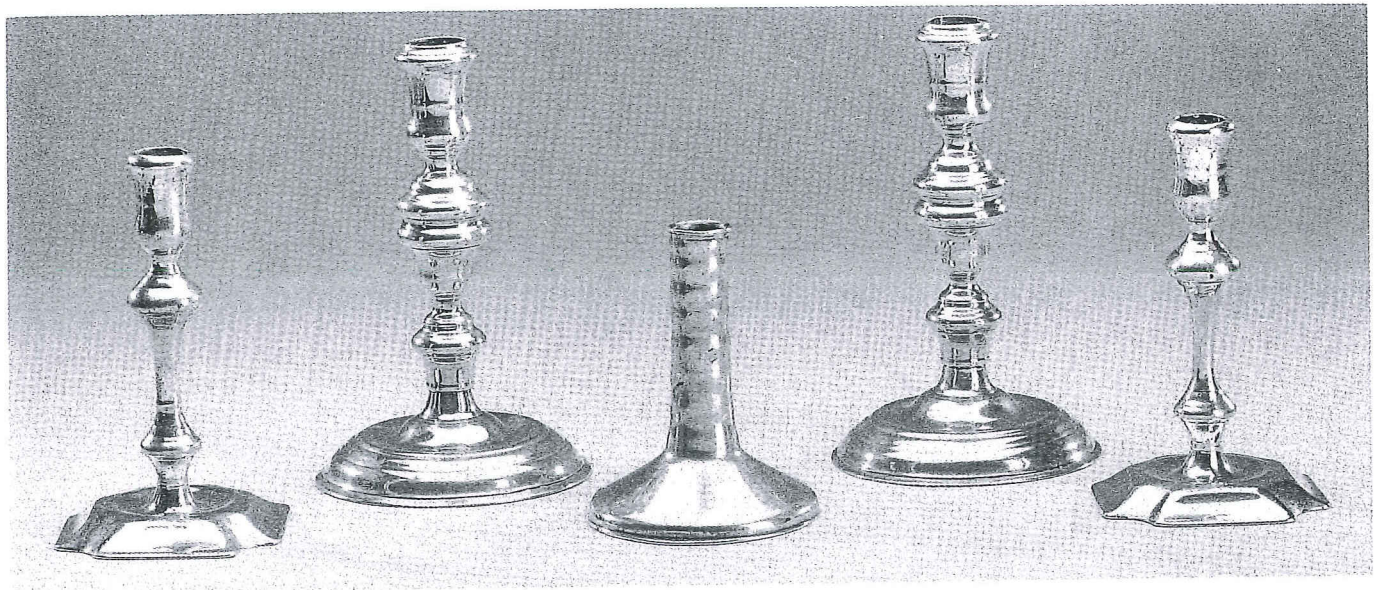
629 **A TRIPLE REEDED RIM DISH BY THOMAS CARTER, circa 1700**, with unusual all over hammering, hallmarks and ownership initials to rim and touch ad verso, 46cm.; 18in. diam., (bad crack to rim); together with a single reeded rim bowl, 18th Century, 45cm.; 18in. diam. (rim damaged) and a plate (03) £250-300

630 **AN ASSEMBLED SET OF EIGHT LIDDED METRIC MEASURES, French 19th Century**, graduated from two litres to centilitre, five with maker's marks of Leseigneur a Caen, The largest 27cm.; 10½in. £300-500

631 **A LIDDED TANKARD BY COMPTON & TOWNSEND, circa 1800**, open shield back thumbpiece and domed cover above body with single girdle and ownership crest, 20cm.; 8in £200-300

632 **A TULIP SHAPED TANKARD BY INGRAM & HUNT, circa 1780**, palmette thumbpiece and domed cover, 20cm.; 8in £400-500

See Homer & Hall: Provincial pewterers plate 29, and a similar tankard sold in these rooms 15th September 92 lot 1193 from the Ralph Boocock collection.



657

654

656

654

657

633 A PAIR OF CANDLESTICKS, early 19th Century, each with beaded domed circular base and vase knopped stem, 23cm.; 9in.; and a similar single candlestick, (3) £180-220

THE PROPERTY OF MARY BELLIS ANTIQUES

634 A LIDDED FLAGON, French circa 1700, with flat lid and bar thumbpiece above bulbous body, 31cm., 12in. £400-600

635 A TAPPIT HEN OF 18th CENTURY DESIGN, of usual form, 27cm.; 10³/₄in. £150-200

OTHER PROPERTIES

636 A SIX BRANCH CHANDELIER, Continental, the foliate engraved ball stem dated 1725 surmounted by a lion finial, made-up, 51cm.; 20in diam. £200-300

637 A COLLECTION OF SIX POT-BELLIED LIDLESS MEASURES, 19th Century, including Quart, Pint, 1/2 pint, gill and two 1/2 gills £140-180

638 A CONTINENTAL LIDDED JUG, 19th Century, of bulbous pear shape, 27cm.; 10¹/₂in.; and a German dish 37cm.; 14¹/₂in diam, (2) £140-180

639 A PAIR OF CANDLESTICKS, each with domed circular base and vase knopped stem, 20cm.; 8in.; and a Continental porringer, (3) £120-180

640 A PAIR OF PORRINGERS, Dutch early 19th Century, each with single pieced ear, and makers mark S L, 20cm.; 8in.; and a funnel (3) £180-220

641 A PAIR OF IRISH CHALICES, early 18th Century, each with tall thickened knopped stem and domed base, 23cm.; 9in. £500-800

642 A PAIR OF TRIPLE-REEDED RIM DISHES BY THE MAKER T.E., circa 1690, each with hallmarks to rim and touch adverso, (O.P.5569), 40cm.; 16in. £300-500

643 A TRIPLE-REEDED RIM CHARGER BY JOHN FRENCH, circa 1690, 'hallmarks' and ownership triad to rim, indistinct touch adverso, 51.5cm.; 20¹/₄in. £400-600

644 A PAIR OF PLATES BY SKYNT DUNCOMBE, late 18th Century, 23cm.; 9in.; and a Continental plate, 29cm.; 11¹/₂in (3) £50-80

645 A JERSEY MEASURE BY JOHN DE ST.CROIX, late 18th Century, of usual lidded form with ownership initials to handle and touch under lid, and verification stamps to rim, 27cm.; 10³/₄in. £250-350

646 A CHARLES I 'BUN LID' FLAGON, circa 1635, of usual tapering form with domed cover and erect heart pierced thumbpiece, ownership initials to handle, 26cm.; 10¹/₂in. £1,400-1,800

647 A SCANDINAVIAN PEG TANKARD, 18th Century, the drum body with foliate decoration on three pomegranate feet, the domed cover with a portrait medallion of Martin Luther, 29cm.; 8in. £300-500

648 A WILLIAM AND MARY WRIGGLE-WORK TANKARD, circa 1690, decorated with twin portraits and a crowned monogram within leaf scroll border, lid lacking, base possibly replaced, indistinct touch in base, solder repairs to handle, 13cm.; 15in. £300-500

BRASS AND COPPER

649 A BRASS PRESERVE PAN, Victorian late 19th Century, with steel side handle, diam of pan 29cm.; 11¹/₂in. £100-150

650 A BRASS FIVE BRANCH CHANDELIER, Dutch 18th Century design, the ball and baluster stem supporting scrolled branches, 42cm.; 16¹/₂in. £300-500

650(a) A BRASS STRING URN, English circa 1840, in the form of an urn with a domed lid and cutter, 29cm.; 11¹/₂in. £150-200

651 A BRASS KETTLE, English early 19th Century, of bulbous form on ball feet with turned wood handle, 20cm.; 8in.; and a brass preserve pan, 30cm.; 12in diam, (2) £200-250

652 AN OCTAGONAL LEAD TOBACCO JAR, Regency circa 1820, decorated with Scotsmen in a tavern, 10cm.; 4in.; and a pair of Georgian brass candlesticks circa 1800, with tapering cylindrical stems, 16cm.; 6¹/₂in. £180-200

653 TWO BRASS 'HEEMSKERK' CANDLESTICKS, late 17th Century, each of usual multi-baluster form with a wide mid drip-pan, one with broken stem, 20cm.; 8in and 19cm.; 7¹/₂in. £400-600