

EXH

Days of Sale

WEALDEN ROOM – Tuesday 16th March 1993 at 10.30 am

Oak and Country Furniture

WEALDEN ROOM – Tuesday 16th March 1993 at **2.30 pm**

Textiles, Metalwork and Works of Art

On View:

Friday 12th March 1993, 10.00 am–4.00 pm, Saturday 13th March 1993, 9.30 am–12.30 pm,
Sunday 14th March 1993, 2.00 pm–4.30 pm and Monday 15th March 1993, 10.00 am–4.00 pm

CISSBURY ROOM – Wednesday 17th March 1993 at 10.30 am

British Pottery and Porcelain

On View: Saturday 13th March 1993, 9.30 am–12.30 pm,
Monday 15th March 1993, 10.00 am–4.00 pm and Tuesday 16th March 1993, 10.00 am–4.00 pm

WEALDEN ROOM – Tuesday 23rd March 1993 at 10.30 am

Oriental Carpets and Rugs

On View: Friday 19th March 1993, 10.00 am–4.00 pm,
Saturday 20th March 1993, 9.30 am–12.30 pm and Monday 22nd March 1993, 10.00 am–4.00 pm

CISSBURY ROOM – Wednesday 24th March 1993 at 10.30 am

**Tinplate and Diecast Toys, Trains, Teddy Bears,
Dolls, Dolls' Houses and Rocking Horses**

On View: Saturday 20th March 1993, 9.30 am–12.30 pm,
Monday 22nd March 1993, 10.00 am–4.00 pm and Tuesday 23rd March 1993, 10.00 am–4.00 pm

which will be sold
by

SOTHEBY'S
FOUNDED 1744
Sussex

Summers Place, Billingshurst, West Sussex RH14 9AD

Telephone: (0403) 783933

Fax: (0403) 785153

Fax for Absentee Bids only: (0403) 785332

Illustrated Catalogue £10.00

Sotheby's London: Registered at 34-35 New Bond Street, London W1A 2AA
No. 1222607

Front Cover: Lot 834 Back Cover: Lot 321

SPECIAL VIEWING
Sunday, 14th
March, 1993
2.00 to
4.30 pm



377

379

378

379

368 **■ A BONE CASSETT**, possibly Russian 18th Century, the lid with reliefs of figures standing by trees, all-over decorated with pierced flower vines on coloured panels, the interior with complementary inner lid, 24cm.; 9½in deep £300–500

369 **A LEATHER BLACKJACK**, English circa 1700, of usual baluster form, spout broken, 31cm.; 12in £200–250

370 **A GILT-IRON DOOR STOP**, William IV circa 1835, in the form of a lotus leaf scroll, 19cm.; 7½in; a green painted iron tobacco jar and cover, and a pair of brass candlesticks, 19th Century, 10cm.; 4in; (4) £120–180

371 **AN ENGRAVED HORN BEAKER**, late 18th/early 19th Century, decorated with a zoo and a rampaging elephant being shot by soldiers, 10cm.; 4in £100–150

372 **A STAINED AND LEADED GLASS ARCHED RECTANGULAR PANEL**, decorated with a coat-of-arms and other heraldic devices and inscribed 'RICHARD BEAUCHAMP EARL of WARWICK. Md ELIZABETH DAUGHTER and HEIR of THOMAS LORD BERKELEY 1st WIFE. & ISABELLA DAUGHTER & HEIR of THOMAS LORD DESPENCER 2nd WIFE. O.B. 1439. 95cm high.; 54.5cm wide £250–350

373 **TWO STAINED AND LEADED GLASS PANELS ATTRIBUTABLE TO EDWARD FRAMPTON**, one an angel flanked by six foliate roundels, 91cm wide.; 101cm high.; the other of pairs of angels and symbols of the crucifixion, 57.5cm wide.; 108.5cm high. £250–350

Provenance by repute: Removed from Chester Street Chapel, Wrexham, Clywd.

374 **A STAINED AND LEADED GLASS WINDOW BY EDWARD FRAMPTON**, three panels of Saints Peter & Paul flanking Christ, each 51cm wide.; 128cm.; high; surmounted by three arched panels, each 51cm wide.; 37cm high.; and above three rectangular panels inscribed 'St Peter', 'St Paul' & 'I am the good shepherd', one signed and dated 1885, each 51cm wide.; 22cm high.; each of the nine panels decorated with stylised foliate backgrounds £400–600

See footnote to previous lot.

374(a) **A STAINED AND LEADED GLASS WINDOW**, with a column of three polychrome roundels bearing flowerheads with arched top, in modern frame, 167 by 51cm; 5ft 6in by 1ft 8in; together with a pair of stained and leaded glass rectangular windows, each with a column of two and a half quatrefoils bearing flowerheads, 119 by 51cm; 3ft 10in by 1ft 8in £200–300

375 **A BRASS CASSETT OF MEDIEVAL DESIGN**, late 19th Century, cast with figures in arches, 15cm; 6in wide; and another similar casket £200–300

BRITISH AND CONTINENTAL PEWTER

376 **MISCELLANEOUS PEWTER**, late 18th/19th Century, comprising a dish, 41cm.; 16in.; five plates, 23cm.; 9in.; three tavern mugs, two lidless baluster measures, a jug, and a porringer (13) £200–300

377 **■ A TREASURY TYPE INKWELL**, circa 1763, each hinged cover engraved 'A H 1763' and one also initialled CB, the undersides inscribed 'A Hillier 1763' and 'A Hillier R 1767', the interior with ink and pounce pot, 14cm.; 5½in. wide; and a Continental canted rectangular inkwell, 14cm.; 5½in. wide £200–250

378 **■ A BUD BALUSTER MEASURE**, circa 1700, a half-pint capacity, crowned GR capacity seal and initials IB to lid, 13cm.; 5in. £150–200

379 **■ A COLLECTION OF FIVE DOUBLE VOLUTE BALUSTER MEASURES**, mid 18th Century, comprising pint, half-pint, gill (×2), half-gill, each with fleur-de-lys attachment between thumbpiece and lid, the pint 15cm.; 6in. £400–600

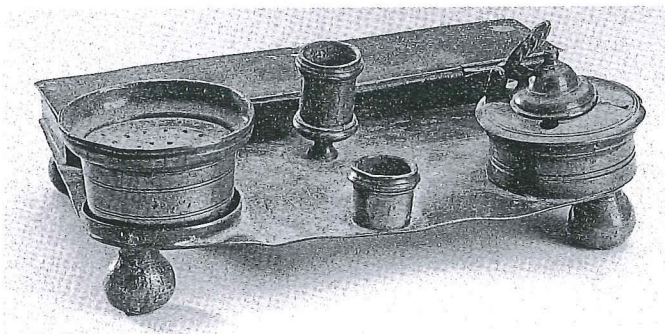
380



422

392

394



381

381 **□ A GEORGIAN RECTANGULAR INKSTAND**, circa 1800, the raised pen tray and cover monogrammed and dated March 22 1819, the base with detachable pounce pot, inkwell, candle nozzle and other container, 21cm.; 8 1/4in wide
£250-350

382 **A COLLECTION OF MISCELLANEOUS PEWTER AND BRITANNIA METAL**, 19th Century, including peppers, ladles, tea-pots, two tobacco jars, two single candlesticks, an oil lamp etc (22)
£100-200

383 **THREE QUART TAVERN MUGS**, mid 19th Century, of tulip, straight-sided tapering and 'tuck-in' type, a pint mug and two half-pint mugs, (6)
£120-180

384 **A PAIR OF SCOTTISH BRITANNIA METAL CHALICES**, 2.5cm.; 8 1/2in; a matching lidded flagon, 32cm.; 12 1/2in, and a matching dish, each piece engraved 'Free Church of Scotland Banchory Fernan. 1843' (4)
£300-500

385 **THREE TAVERN MUGS WITH BRASS RIMS**, mid 19th Century, each of straight-sided tapering form with reeded bands comprising pint and two half-pints; and seven lidless baluster measures, the largest of gill capacity (10)
£120-180

386 **A COLLECTION OF PLATES**, English and Continental 18th Century, including one by John Harrison, Duncombe and others, 23cm.; 9in average; and a single-reeled rim dish, 42cm.; 16 1/2in, and a reproduction dish and three reproduction plates (14)
£200-300

387 **AN ASSEMBLED SET OF EIGHT LIDDED METRIC MEASURES**, French 19th Century, graduated from two litres to centilitre, five with maker's marks of Leseigneur a Caen, *The largest* 27cm.; 10 1/2in.
£200-300

388

389 **A BRITANNIA METAL FOUR PIECE COMMUNION SERVICE**, 19th Century, comprising a lidded flagon 25cm.; 10in; a reeded rim salver, 20cm.; 8in diam; and two cup chalices, 15cm.; 6in; the flagon and salver with makers marks S F, (4)
£120-180

390 **A LIDDED TANKARD BY COMPTON & TOWNSEND**, circa 1800, open shield back thumbpiece and domed cover above body with single girdle and ownership crest, 20cm.; 8in
£150-200

391 **A LIDDED FLAGON, Dutch/Belgian 18th Century**, with bulbous lower body, domed cover and erect thumbpiece, 26cm.; 10 1/2in
£150-200

392 **□ A DOMED LID TANKARD BY RICHARD GOING**, circa 1720, scroll thumbpiece, shield handle terminal, and drum with single raised fillet and ownership initials C.T. (O.P.1909), 16cm.; 6 1/4in
£450-600

393 **A GEORGIAN QUART CAPACITY TAVERN MUG**, circa 1790, straight sided tapering body with raised fillet, engraved with flower swags and a family crest, indistinct touch and hallmarks, 16cm.; 6 1/4in
£100-150

394 **□ A DOMED LIDDED TANKARD BY RICHARD GOING**, circa 1730, ram's horn thumbpiece, shield terminal, tapering drum with a raised fillet, touch in base, (O.P.1909), 14cm.; 5 1/2in
£500-700

395 **A DOMED LID TANKARD BY TOWNSEND AND COMPTON**, early 19th Century, open chairback thumbpiece, scrolled handle, glass bottom, 'hallmarks' to drum (O.P.4800), 15cm.; 6in
£150-250

396 **A CONTINENTAL CANDLESTICK**, plain cylindrical nozzle on inverted neck and tall slightly tapering cylindrical stem and dished base, 17cm.; 6³/₄in; and a cast-pewter cream jug, English circa 1800, 11cm.; 4¹/₂in £150-250

397 **A LIDDED ALE JUG**, early 19th Century, spouted baluster form with engraved monogram and tavern inscription, 19.5cm.; 7³/₄in £150-200

398 **A BAPTISMAL BOWL**, English late 18th Century, single reeded rim and crowned X mark adverso, 29cm.; 11¹/₄in diam £120-180

399 **AN IRISH MEASURE BY JOSEPH AUSTEN OF CORK**, early 19th Century, of usual 'haystack' form, half-gallon capacity, repairs 23cm.; 9in £200-300

400 **A GERMAN FLAGON**, late 18th Century, the tapering cylindrical drum with domed foot, the flat cover with raised boss and erect thumb piece, 30cm.; 11³/₄in £150-200

401 **A PAIR OF PLAIN RIMMED DISHES BY THE MAKER B H THIER**, Continental circa 1800, 31cm.; 12in; another similar dish by a different maker; a wavy-edged dish; and a set of four bowls, German 18th Century, 20cm.; 8in (8) £150-200

402 **A COLLECTION OF EIGHT WAVY-EDGED PLATES**, Continental, late 18th/19th Century, various makers, each with mark of winged angel with sword and scales, 23cm.; 9in diameter on average. £200-250

403 **A GERMAN LIDDED TANKARD**, circa 1798, the cylindrical drum with an engraved coat of arms on domed foot, the flat cover with ball thumbpiece inscribed 'A D K 1898' 26cm.; 10in £150-200

404 **AN AUSTRIAN HOT WATER URN**, circa 1840, the pear shaped body with eagle mask ring handles, 28cm.; 11in; a quart capacity tavern mug by James Yates; a ewer decorated with a bust of Christopher Columbus, 46cm.; 18in; and a set of three condiment pots, Swiss 19th Century, with foliate relief decoration, one lid missing (6) £200-300

405 **A TRIPLE-REEDED RIM DISH BY THE MAKER R.M.**, circa 1700, 'hallmarks' and ownership triad to rim, indistinct touch adverso, 42cm.; 16¹/₂in; a plate by Robert Jupe, 34cm.; 13¹/₂in; and a smaller plate (3) £200-300

406 **A COLLECTION OF SIX SWISS MEASURES**, each with flat heart shaped lid, double acorn thumbpiece, slender ribbed neck and baluster body, graduated from 25.5 to 12.5cm.; 10 to 4³/₄in £500-700

407 **AN ASSEMBLED SET OF GRADUATED METRIC MEASURES**, French late 19th Century, of straight-sided lidded form comprising double litre, litre, demi-litre, double decilitre and decilitre, four with LeSeigneur of Caen marks (5) £250-350

408 **A LIDLESS ALE JUG**, early 19th Century, of usual baluster spouted form, pint capacity, 11cm.; 4¹/₂in; a spouted jug, straight sided with banded base, 16cm.; 6¹/₄in; a chamberstick and snuffer and a miniature coal scuttle (4) £150-200

409 **A CHARGER BY JOHN AUGHTON**, circa 1730, single reeded rim, (O.P.149) 51cm.; 20in £250-300

410 **A TRIPLE-REEDED RIM CHARGER BY THE MAKER H.H.** circa 1700, indistinct touch adverso and (apparently unrecorded) hallmarks to rim, 51cm.; 20in; another triple-reeDED rim dish, 46cm.; 18in; and a charger by Edward Ubley, circa 1730, (O.P.4853) 51cm.; 20in. (3) £200-400

411 **A HANGING LIDDED VESSEL OR SUGERLI**, Swiss/S.German 18th Century, swing iron handle from grotesque masks, front spout and domed cover with pineapple finial, 20cm.; 8in; a Georgian tavern mug, 18th Century, 9cm.; 3¹/₂in; a lidded Scottish baluster measure with shell thumbpiece, early 19th Century 13cm.; 5in; a quart tavern mug and a pint tavern mug, 19th Century, (5) £150-200

Lit: Bruckmann's Zinn-Lexikon: Sugerli's doubled as baby feeding vessels when not used as laver jugs.

412 **TEN ASSORTED PLATES**, 18th Century and later, assorted makers, the largest 25cm.; 9³/₄in £120-180

413 **AN ARMORIAL EMBOSSED WAVY-EDGED DISH**, Continental late 18th Century, by the maker Georg Klingling, decorated with the coat of arms of Henry John Temple, Viscount Palmeston, 1785, 36cm.; 14in diameter £150-200

414 **A PAIR OF CANDLESTICKS**, Portuguese circa 1700, each with trifirm shell cast base and foliate feet rising to multi-baluster stem, nozzles and drip pans restored, 41cm.; 16¹/₄in £300-400

415 **A SET OF EIGHT PLATES BY ALEXANDER CLEEVE**, early 18th Century, each with touch mark (O.P.961) and 'hallmark' (O.P.960) adverso, the rims with engraved crest of Watson: a griffin's head erased gorged with two bars, 24cm.; 9¹/₂in £400-500

Lots 416 and 419 are also engraved with the same family crest

416 **A SET OF FOUR PLATES BY JOHN LAWRENCE**, early 18th Century, matching the previous lot each with Watson crest to rim, touch adverso (O.P.2863), 24cm.; 9¹/₂in £180-220

417 **FOUR DISHES**, English mid 18th Century, one by Thomas Giffin?, the others with indistinct marks, two with pairs of ownership initials to rim, 37.5cm.; 14³/₄in on average £200-300

418 **A COLLECTION OF FOUR PLATES**, circa 1700, including one by James Hitchman, 22.5cm.; 8³/₄in; another by John Hayton or Hardman, 22cm.; 8³/₄in; and two others similar by other maskers, each with pairs of ownership initials to rims, (4) £120-180

419 **A SET OF SIX DEEP PLATES BY JOHN HARRISON JUNR' OF YORK**, circa 1700, touch and 'hallmarks' adverso (O.P.2161), and Watson crest to plain rims, 23.5cm.; 9¹/₄in £250-300

420 **A NEAR SET OF THREE DISHES BY ARTHUR WHARTON**, circa 1735, touch and 'hallmarks' adverso (O.P.5076), (two with indistinct marks), all with ownership initials to rim, 42cm.; 16¹/₂in £200-250

421 **A SET OF TEN METRIC MEASURES**, French 19th Century, of straight sided spouted lidless form, each with scroll handle and plain erect thumbpiece, graduated from 5 litres to 1 Centilitre, the largest with twin loop handles and all with Arabic inscription, 25.5 to 3.5cm.; 10 to 1¹/₂in £600-800

These measures were acquired by the late C.R. Williams C.B.E. sometime General Manager of the Sudan Government Railways. They were believed to be part of the weights and measures equipment introduced at the time of the re-conquest of the Sudan by Kitchener, and purchased when they were superceded by modern measures in the 1920's/30's.

422 **A DOMED LID TANKARD BY WILLIAM WATKINS**, circa 1730, the drum with single raised girdle, plain erect thumbpiece, ball handle terminal, touch (O.P.4981) in base, 17.5cm.; 7in £400-600

METALWORK

423 **A BRASS LADLE**, 19th Century, 38cm.; 15in; a Victorian brass chamberstick, 13cm.; 5in; and a pair of steel sugar cutters with engraved decoration, 24cm.; 9¹/₂in. (3) £150-200

424 **A PAIR OF GEORGIAN BRASS CANDLESTICKS**, circa 1720, each with canted rectangular base, and baluster stem, 16cm.; 6¹/₄in £250-350