



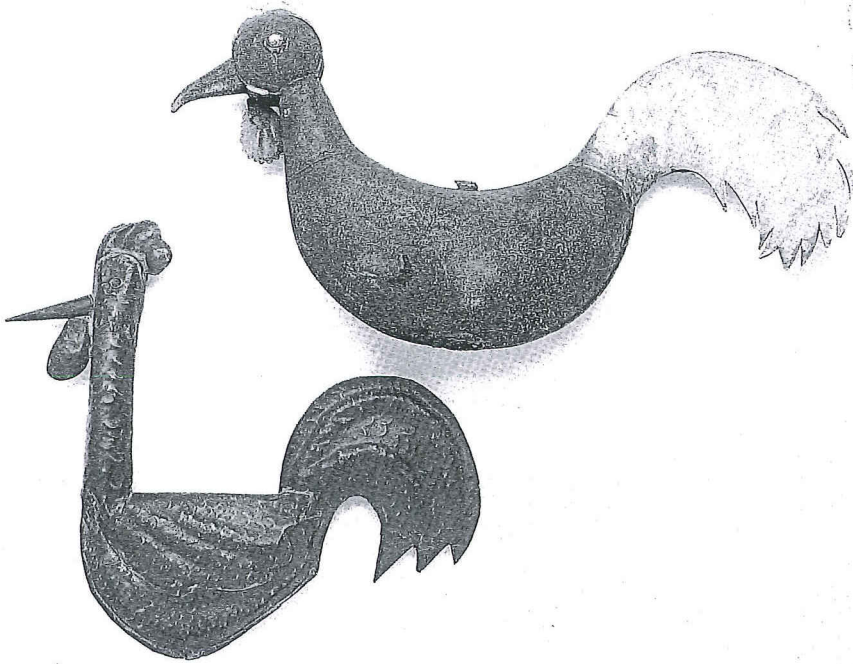
**SOTHEBY'S**  
FOUNDED 1744

Country Furniture, Primitive Paintings,  
Textiles, Metalwork, British Pottery,  
Oriental Carpets, Snuff Bottles,  
Toys, Trains, Teddy Bears and Dolls

**BILLINGSHURST, SUSSEX**

TUESDAY, 22 JUNE TO  
WEDNESDAY, 30 JUNE, 1993





510  
511

510 **A TIN-PLATE AND ZINC WEATHERVANE**, early 19th Century, of moulded form, 74cm.; 2ft 5in wide £300-400

511 **A MOULDED COPPER WEATHERVANE**, late 19th Century, in the form of a cockerel, 48cm.; 19in £150-250

512 **A WOOD ARTISTS MODEL**, late 19th Century, with ball-jointed articulated limbs and facial details, 39cm.; 15½in £200-300

513 **A BLUE-PAINTED PINE DOLLS HOUSE**, late 19th Century, the hinged front decorated with a door and windows below an arched roof with dormer windows, 114cm.; 3ft 9in high £350-500

514 **A CARVED WOOD SHIP MODEL IN CASE**, Victorian circa 1840, the two masted rigged vessel and a rowing boat in a turned mahogany glazed case with urn finials and bun feet, 56cm.; 22in wide £500-600

515 **A CARVED WOOD GROUP OF A MAN AND A LADY**, 19th Century, the man seated on a mask, the lady with a dog and a jug, on domed base carved in relief with an alligator, a dog and a pig, 35cm.; 14in £300-500

516 **A PAIR OF STRAW-WORK MARINE PICTURES**, French early 19th Century, depicting the Castle at Bordeaux and the mouth of the Elbe, old pencil inscriptions, 20x31cm.; 8x12in £200-300

517 **A SET OF EIGHT ASH DADLUMS**, 19th Century, and a matching ball, 23cm.; 9in £100-200

518 **A SYCAMORE OVEN PEEL**, early 19th Century, 190cm.; 6ft 3in £100-200

519 **A PAPIER MACHÉ MODEL OF A PONY**, late 19th/early 20th Century, standing four square, 69cm.; 27in £250-350

520 **A MOULDED COPPER WEATHERVANE**, early 19th Century, in the form of a cockerell with elaborate scrolled tail and applied scrolled wings, 74cm.; 29in long, £500-800  
*Provenance:* Originally from a Norfolk church.

521 **A CARVED AND PAINTED WOOD TOBACCO FIGURE**, in the form of a Red-Indian, 55cm.; 21½in £150-250

522 **A CARVED ARTICULATED WOOD FIGURE OF A SAILOR**, French circa 1820, with facial details and hat and boots, ball-jointed mechanism, in a contemporary costume of coat and waistcoat and breeches, 34cm.; 13½in £300-500

523 **AN IVORY COUNTER BOX**, Georgian circa 1800, of cylindrical form with turned lid, filled with ivory counters, 10cm.; 4in £150-200



515

524 **AN OAK AND LEAD INLAID CIRCULAR SNUFF BOX**, dated 1838, 9cm.; 3½in diam; an oval brass combination lock snuff box, a papier mache snuff box and a marbled paper kaleidoscope, (4) £100-200

525 **A STEEL STILTON SCOOP**, Thos' Ross & Son 1788, with long blade and turned rosewood handle, 41cm.; 16in £150-200

526 **AN AMERICAN HICKORY AND WHITE-OAK THREE LEGGED STOOL**, 19th Century, of rustic form, 31cm.; 12in £100-200

527 **A SHEPHERDS CROOK**, Sussex, 19th Century, with wrought iron hook on long wood handle, £100-200

#### PEWTER

528 **A BROAD-RIMMED PLATE BY JAMES TAUDIN**, circa 1670, with reeded rim, engraved crest, touch adverso (O.P.4651), 25.5cm.; 10in £250-350

The History of Taudin is well documented. He was a Huguenot refugee who was granted freedom and livery in the Worshipful Company in 1657 after a prolonged battle with the Company who harassed him and tried to prevent his joining. The matter was finally settled after the intervention of Cromwell, but even then the trouble did not stop and it took a letter from King Charles in 1668 to bring to an end further harassment. Literature: Ronald Homer: 'The Story of James Taudin.' The Journal of the Pewter Society Vol 4. Autumn 1984. A 28inch charger by Taudin is in the possession of the Worshipful Company (cat No 1)

529 **A FOOTED CHALICE**, Continental circa 1800, the bowl engraved 'C.E.B.' on turned stem and domed foot, 18cm; 7in; and a German rococo candlestick, circa 1770, 16.5cm; 6½in £120-180

530 **A BROAD RIMMED DISH BY THE MAKER A.C.** French circa 1680, with engraved oval armorial to rim and touch adverso, 25.5cm; 10in £180-250

531 **A HEXAGONAL SPOUTED WINE CAN**, German circa 1850, with screw-lid and ring handle, and loop side handle with acorn finial, engraved with flowers and ownership inscription, 23cm; 9in; and a small hexagonal wine can, circa 1850, with screw-on lid and ring handle, 14cm; 5½in £200-300

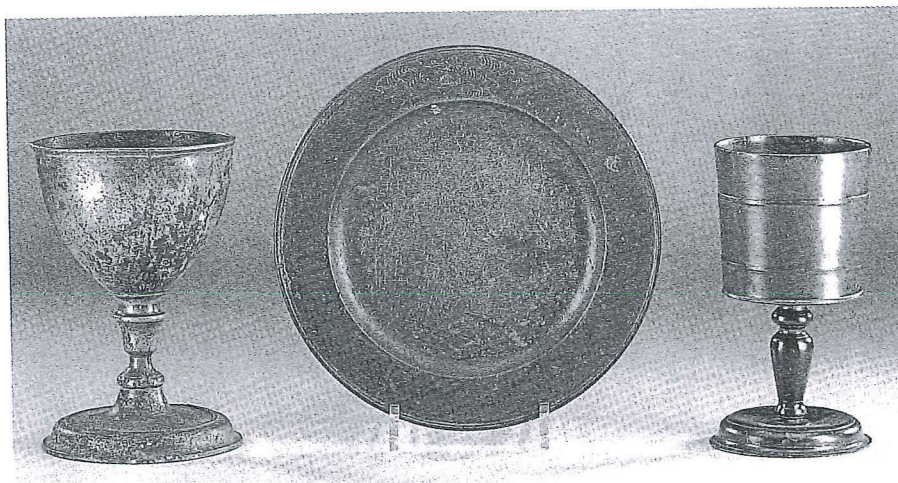
532 **A LARGE TREASURY INKSTAND**, circa 1800, with twin flap hinged lid on four ball feet, 26cm; 10¼in wide £80-120

533 **MISCELLANEOUS PEWTER COMPRISING**; Three cylindrical jelly moulds, two half pint tankards, a pair of bowls by Birch and Villiers, and a German bowl and a wavy edged plate £150-200

534 **A DOMED LID TANKARD BY WILSHIRE OF BRISTOL**, circa 1800, of pint capacity, of baluster form with open chairback thumbpiece and scroll handle, 15cm; 6in £150-200

535 **A PEWTER COOLING URN**, early 19th Century, in the form of a footed urn with side handles and engraved with a crest with inner sleeve, 21cm; 8¼in £120-180

536 **AN OVAL SERVING DISH BY YATES, BIRCH & SPOONER**, early 19th Century, 51cm.; 20in; and three further assorted plates, (4) £150-200



558

528

545



538

537

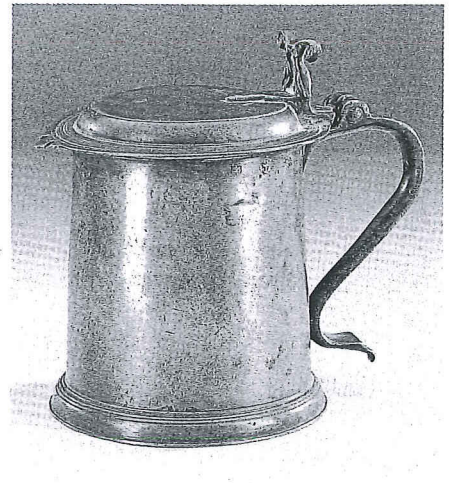
537 **A LIDDED TANKARD BY ADOLPH WILHELM KRIPNER**, Lubeck circa 1830/45, the cylindrical body engraved with tulips, the cover inscribed 'Hinrich Burmester 1845' ball thumbpiece and relief scroll cast handle, 33cm.; 13in £250-300

538 **A LIDDED TANKARD BY CHRISTIAN HERMANN HULSEMAN**, Lubeck early 19th Century, the cylindrical body decorated with a heart, a crown and an orb flanked by flowers and an inscription, the cover inscribed 'Johann Hinrich Prismann 1817', 33cm.; 13in £250-300



583

539



553




552

551


THE FOLLOWING LOTS ARE FROM THE COLLECTION OF THE LATE H.J. FELL ESQ.

(For colour illustration see page 27)

539  A RARE STUART 'WRIGGLED-WORK' TWIN-HANDLED CUP, circa 1670, the tapering body on domed foot decorated on each side with tulips and flowers, ownership initials I.H. to one loop handle, indistinct touch in base, 15.5cm.; 6 1/8in £1,500-2,000

For similar examples see the Worshipful Company supplementary catalogue of Pewterware 1979 plate S5/500 and H.H.Cotterell: Pewter down the ages fig 89, (Turner collection)

(For colour illustration see page 27)


540  A RARE 'MOUNT EDGE CUMBE' CHARGER, circa 1670, engraved with the arms of the Earls of Mount Edgecumbe in a foliate wreath, and with the hallmarks and touch of Nicholas Dolbeare of Ashburton (M.P.M 5551A), 54.3cm.; 21 3/8in £1,400-1,800

The charger is one of several made for Cotehele House, Cornwall seat of the Edgecumbe family. For a similar example from the Bradshaw collection see lot 100, Sotheby's N.B.S. 13.6.77.

541 A PAIR OF PRICKET CANDLESTICKS, German 16th Century Design, each with tall domed foot rising to cylindrical stem knopped with three flanges and dished tops, 36.5cm.; 14 1/2in £500-800

542 A SINGLE REEDED-RIM TAZZA, circa 1720, on domed foot, touch and hallmarks of T.B. (O.P.5469), 22.5cm.; 9in diam £200-300

(For colour illustration see page 27)

543  A PAIR OF BROAD-RIMMED 'MOUNT EDGE CUMBE' PLATES, circa 1675, each with reeded rim stamped with the letters M.E. and hallmarks of the maker W.H. (M.P.M.5694B), 24.5cm.; 9 5/8in £800-1,200

See footnote to lot 540, for similar examples see Sotheby's N.B.S. 13.6.77 lot 45 (Bradshaw collection) and these rooms 4.12.90 lot 1420 (Jaeger collection).

544 A TRIPLE REEDED-RIM BOWL, circa 1700, with a raised boss, two sets of ownership initials to rim, touch of I.S. ? with fleur-de-lys and rose adverso, 35cm.; 13 7/8in £200-300


545  AN IRISH CHALICE, late 17th Century, the tapering body with two raised bands on ball knopped baluster stem and domed foot, 20cm.; 8in £200-300


For a similar chalice see Cotterell Old Pewter Pl XXIXc

546 A SET OF TWELVE SPOONS, Dutch, each with a trifid handle cast in relief with a vase of flowers and a heart enclosing the initials L.F. the reverse with makers mark of H.K. in a crowned rose, 18.5cm.; 7 1/2in £400-500


547 A PAIR OF CANDLESTICKS OF EIGHTEENTH CENTURY DESIGN, each with canted square base and baluster stem, 15cm.; 6in £80-120

THE FOLLOWING LOTS ARE FROM THE COLLECTION OF THE LATE G.J. GOLLIN ESQ.


(For colour illustration see page 30)  
 548  A JAMES I 'BUN' LID FLAGON, circa 1610, with button finial and erect thumbpiece on domed foot, 29cm.; 11½in £1,800-2,200


(For colour illustration see page 30)  
 549  A JAMES I KNOPPED 'BUN' LID FLAGON, circa 1610, of usual tapering form with domed foot and ridged erect thumbpiece, 28cm.; 11in £1,200-1,800


Exhibited: Usher Gallery Lincoln 1962, cat No 45


(For colour illustration see page 30)  
 550  A SCOTTISH POT-BELLIED LIDDED MEASURE, circa 1700, of Scots Pint capacity with usual domed lid and erect thumbpiece, 25.5cm.; 10in £1,000-1,500

For a set of similar measures from the Margaret Hand Collection see lot 788, 12 Nov 91 these rooms

551  A SCOTS CRESTED TAPPIT HEN, late 18th Century, of usual shouldered form, 26cm.; 10¼in £300-400


552  A SCOTS TAPPIT HEN, circa 1800, with plain domed lid and erect thumbpiece, 28cm.; 11in £300-400


553  A FLAT-LID TANKARD OF CHARLES II STYLE, with love-bird thumbpiece and denticulated brim, row of four hallmarks to tapering body and touch of John Slough (O.P.4320A) in base, on reeded domed foot, 16cm.; 6in £300-400

554  A DOUBLE-DOMED LID TANKARD BY THOMAS WILLSHIRE OF BRISTOL, circa 1800, of tulip shape with open chairback thumbpiece, touch (O.P.5202) in base, 19cm.; 7½in £300-400

555 A PAIR OF SWISS CANDLESTICKS, circa 1800, each with trumpet base and ball-knopped stem, 18cm.; 7in £250-350

556 A SET OF FOUR IRISH 'HAYSTACK' MEASURES BY JOSEPH AUSTEN OF CORK, mid 19th Century, of usual shape with touch under base, 19 to 9.5cm.; 7½ to 3¾in £300-400

557  A GEORGIAN DOMED-LID TANKARD, circa 1740, the straight-sided tapering drum with a single raised girdle, plain scroll thumbpiece, ownership E.B. stamped under lid and touch (indistinct) in base, 16.5cm.; 6½in £450-650

558  A SCOTS COMMUNION CUP, circa 1780, the tapering cup on vase knopped stem and wide foot, 20cm.; 8in £100-150

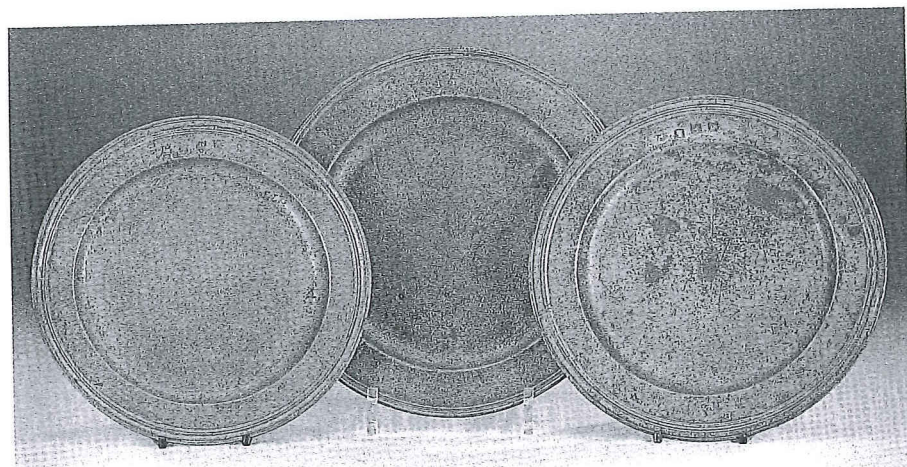
Exhibited: Glasgow Empire Exhibition, 1939, excavated Grantown-on-Spey



554

594

557



565

563

564


559 A HEXAGONAL KNOP SPOON, English 16th Century, the fig shaped bowl stamped with a Gothic A, 15.5cm.; 6¼in; a slip top spoon, 17th Century, makers touch T.A. with crossed swords and ownership initials in bowl, and a serving spoon, late 19th Century, (3) £250-300


Literature: Worshipful Co of Pewterers Catalogue 1968, plate 50 No 467 for a similar example


560 A TRIPLE-REEDED RIM DISH, circa 1700, hallmarks of maker R.B. possibly Richard Boyden, (O.P.539A) and ownership initials to rim, 38cm.; 15in £150-200

561 A SCALE PLATE, circa 1800, with single-reeDED rim, perhaps by Samuel Cocks, Cotterell star label on reverse, 38cm.; 15in £100-150

562 A BROAD-RIM DISH OF SEVENTEENTH CENTURY DESIGN, touch of R.D.1677 adverso, hallmarks and ownership triad to rim, 35cm.; 14in £120-180

563  A TRIPLE-REEDED RIM PLATE BY JOSEPH GIDDINGS, circa 1710, ownership I.A. to rim touch adverso, (O.P.1858), 24cm.; 9½in £150-200

564  A TRIPLE-REEDED RIM PLATE BY MARTHA FLY, circa 1690, the triple-reeDED rim with hallmarks and ownership triad, 22.5cm.; 8¾in £200-250

565  A TRIPLE-REEDED RIM PLATE, circa 1690, partially legible hallmarks and ownership initials to rim, 21cm.; 8¼in £150-200

566 A SINGLE-REEDED RIM PLATE, early 18th Century, the rim inscribed 'A. Cooper, Fleece & Sun, Threadneedle St', indistinct touch, traces of Cotterell star paper table, 24.5cm.; 9¾in; a plate by George Homes, Cotterell paper table, 23.5cm.; 9¼in; and another by Henry Little, (3) £150-200

567 A SINGLE-REEDED RIM PLATE BY WILLIAM ATKINSON, early 18th Century, 28cm.; 11in; and two further smaller plates, indistinct marks, (3) £100-150



589

588



605

606



584

586

**568 MISCELLANEOUS REFERENCE BOOKS INCLUDING: INGLEBY WOOD:** Scottish Pewter-Ware and Pewterers, and others by Massé, Michaelis, Gale, Bell, Navarro etc. £80-120

**569 MISCELLANEOUS REFERENCE BOOKS INCLUDING:** Cotterell: Old Pewter, Batsford 1929; Cotterell: Bristol & West Country Pewterers, 1918; Pewter Exhibited in Cliffords Inn Hall, 1908, and three further £80-120

**OTHER PROPERTIES**

**570 A CONTINENTAL CANDLESTICK,** plain cylindrical nozzle on inverted neck and tall slightly tapering cylindrical stem and dished base, 17cm.; 6 1/2 in.; and a cast-pewter cream jug, English circa 1800, 11cm.; 4 1/2 in £120-160

**571 AN ASSEMBLED SET OF SEVEN GRADUATED 'HAYSTACK' MEASURES,** Irish 19th Century, from gallon to 1/2 noggin, touch marks of Joseph Austen of Cork and the Munster Iron Co, 30 to 8cm.; 11 1/4 to 3 in £400-600

**572 AN ASSEMBLED GRADUATED SET OF FIVE 'HAYSTACK' MEASURES,** Irish 19th Century, from 1/2 Gallon to noggin, Austen of Cork, Munster iron Co and crowned X marks, 25 to 9cm.; 10 to 3 1/2 in £300-500

**573 THREE GRADUATED TAVERN MUGS WITH BRASS RIMS,** late 19th Century, quart to half-pint each with reeded bands, touch of Farrow & Jackson, London, and a 1/12 pint baluster measure with brass rim, (4) £120-180

**574 AN EDINBURGH LIDDED BALUSTER GILL MEASURE,** circa 1820, thumbpiece broken; a Glasgow lidded baluster with shell thumbpiece, 13cm.; 5 in; an Irish lidless noggin baluster measure, and two further measures, (5) £120-180

**575 MISCELLANEOUS TAVERN MUGS AND TANKARDS,** including two lidded tankards, mugs etc: (11) £120-180

**576 A COLLECTION OF CONTINENTAL PLATES AND DISHES,** including a dish embossed with figures in a tavern, 39cm.; 15 1/2 in; a relief cast plate of sixteenth Century design, 19cm.; 7 1/2 in diam; a broad rimmed plate, 26cm.; 10 in; and five further assorted, (8) £120-180

**577 A SWISS SPOUTED LIDDED TANKARD,** with banded bulbous body and domed cover with a negro mask finial and erect thumbpiece and long hexagonal spout connected by a beaded strut, 33cm.; 13 in £150-200

**578 A NEAR-PAIR OF IRISH CHALICES,** 18th Century, each with straight-sided tapering bowl on wide knopped stem and ridged domed foot, 21.5cm.; 8 1/2 in; and another chalice, (3) £200-300

**579 A RECTANGULAR STANDISH,** circa 1800, with hinged lid revealing three compartments above a wide drawer on domed skirt base, 21cm.; 8 1/4 in wide; and a treasury type inkwell with double hinged lid on half ball feet, 19cm.; 7 1/2 in wide, (2) £150-200

580 **A COLLECTION OF SPOONS AND OTHER ITEMS**, including five stamped Ashberry metal, 19th Century, 23cm.; 9in; six similar by H.Holdsworth, two trefoil spoons; another spoon; two Continental porringers; an eighteenth Century cup salt; an inkpot ?; a flask, a ladle and a funnel, (21) £150-200

581 **A PAIR OF CANDLESTICKS**, circa 1830, each with domed circular beaded rim and baluster stem, 31cm.; 12in £120-180

582 **FIVE PAIRS OF BRITANNIA METAL CANDLESTICKS**, late 19th Century, 'filled', the tallest 27cm.; 10½in £100-150

583 **A WRIGGLED-WORK BEAKER**, Dutch circa 1700, naively decorated with scenes from the life of Christ, maker's touch of P.P. in a crowned rose, 17cm.; 6½in £500-800

584 **A PAIR OF SCOTTISH PEWTER CHALICES**, late 18th Century, each with swelling stem with a central girdle on domed foot, 23.5cm.; 9¼in £200-300

585 **A PAIR OF SCOTTISH CHALICES**, late 18th Century, of similar type, 23.5cm.; 9¼in £200-300

586 **A PAIR OF SCOTTISH CHALICES**, circa 1800, each with baluster stem and domed foot, 23.5cm.; 9¼in £200-300

587 **A PAIR OF SCOTTISH CHALICES**, circa 1800, of similar form, 23cm.; 9in £200-300

588 **A SCOTTISH LAVER**, mid 18th Century, the tapering body with a raised girdle, flat lid and twin cusp thumbpiece, indistinct touch in base, 33cm.; 13in £350-450

589 **A SCOTTISH LAVER BY GRAHAM & WARDROP**, circa 1800, of similar smaller form, 25cm.; 9½in £250-350

590 **A SPOUTED BRITANNIA METAL FLAGON BY JAMES DIXON**, 19th Century, with foliate spout and spire finial, 37cm.; 14½in £100-200

591 **A CRESTED TAPPIT HEN**, late 18th Century, of Scots pint capacity, the usual shouldered body with turned rings and inscribed with the initials I.B., 28cm.; 11in £250-350

592 **A GEORGIAN OVAL SERVING DISH**, late 18th Century, monogram to rim, 56cm.; 22in wide £200-300

593 **A SWISS FLAGON BY LAURENZ WESCHER**, late 18th Century, the tapering body with angular spout domed cover with grape cluster finial, ridged erect thumbpiece, 18.5cm.; 7¼in £150-200

594 **A DOUBLE-DOMED LID TANKARD OF QUART CAPACITY**, circa 1725, possibly by William Eddon, the drum with a raised girdle engraved with an acanthus leaf and owners name, 'Jery ? Thomas ?', a row of hallmarks to rim and with pierced scroll thumbpiece, 20cm.; 8in £600-800

595 **A GUILD FLAGON BY JOSEPH ANTON OF SCHLAGENWALD**, German mid 18th Century, the squat wide cylindrical drum with a single raised fillet and wide skirt base inscribed 'MARTIN RUSTLER ZUNFTMEISTER' and engraved with a boot, the domed cover with ball thumbpiece inscribed I.C.M. 1757, 20cm.; 8in £300-500

596 **A TRIPLE REEDED RIM DISH**, circa 1700, ownership initials A.R. to rim, indistinct touch adverso, 38cm.; 15in; a plate by Henry Maxted with engraved crest, 24cm.; 9½in; a plate by Thomas Hodgkin, 22cm.; 8½in, another unmarked, two reproduction saucers and a Continental reproduction plate, (6) £150-200

597 **A PAIR OF SINGLE REEDED RIM DISHES**, 1st half 18th Century, possibly by Richard Dunne (O.P.1469) both with ownership initials, 38cm.; 15in; and a similar dish, (3) £150-200

598 **A SINGLE REEDED RIM DISH BY JOHN DUNCOMBE**, late 18th Century, crowned ownership initials, 34cm.; 13½in; another similar, indistinct touch, 42cm.; 16½in; another by the maker I.C. mid 18th Century, 34cm.; 13½in (3) £150-200

599 **FOUR QUART TAVERN MUGS**, 19th Century, two 'U' shaped, one tulip shape (lacking lid), one straight sided tapering on 'tuck-in' foot, and a Quart lidless pot-bellied baluste, (4) £150-200

600 **A PAIR OF HALF-PINT FOOTED CUPS BY JOSEPH MORGAN OF BRISTOL**, circa 1840, of tulip form each with loop handle with ball terminal (O.P.3289), three similar footed mugs, and a pair of half-pint beakers of banded tapering form, (7) £120-180

601 **A LIDDED QUART TANKARD BY TOWNSEND AND COMPTON**, 19th Century, with glass bottom and open-chairback thumbpiece, seven assorted pint tavern mugs, a half-pint mug, and a French lidded measure, 16cm.; 6¼in, and a lead tobacco jar and cover (11) £120-180

602 **A SET OF EIGHT PLATES BY ALEXANDER CLEEVE**, early 18th Century, each with touch mark (O.P.961) and 'hallmark' (O.P.960) adverso, the rims with engraved crest of Watson: a griffin's head erased gorged with two bars, 24cm.; 9½in £300-350

603 **A NEAR SET OF THREE DISHES BY ARTHUR WHARTON**, circa 1735, touch and 'hallmarks' adverso (O.P.5076), (two with indistinct marks), all with ownership initials to rim, 42cm.; 16½in £120-180

Lots 603 to 722 comprise the Metalwork collection of the late Robert M. Holland-Martin (1872-1944).

Well-known as the Chairman of Martin's Bank and of the Southern Railway, he was a man whose interests were far from being confined to finance and industry. Archaeology, excavation of prehistoric barrows, art and architecture were all passions with him. The following collection formed in the early years of this Century shows another aspect of his wide-ranging interests.

604 **TWO SLIP-TOP SPOONS**, early 17th Century, one by the maker T.P. the other indistinct, 16cm.; 6¼in; a trefoil spoon, end broken, and another spoon, (4) £150-200

605 **A SPOUTED 'YORK' FLAGON BY JOHN HARRISON**, circa 1725, with double-domed knopped cover and ramshorn thumbpiece, the handle with reeded terminal, the tapering drum with bulbous base, touch of I.H. in base, acorn finial replaced, 34cm.; 13½in £1,800-2,200  
*Literature:* The Worshipful Co of Pewterers Supplementary Catalogue 1979, pp 30, 33 plare 200

606 **A SIMILAR FLAGON BY JOHN HARRISON**, circa 1725, acorn finial replaced, cover bent, 34cm.; 13½in £1,800-2,200

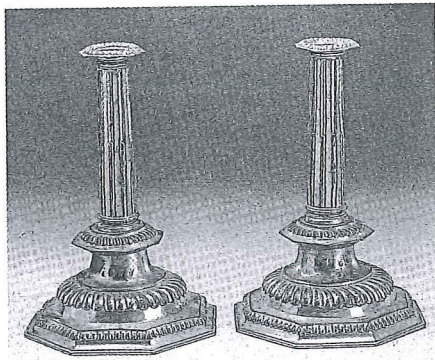
607 **A FLEMISH PEAR SHAPED LIDDED FLAGON**, with shell thumbpiece and embossed armorial shield to body, 28cm.; 11in; and a Continental broad rimmed bowl on foot, touch of H. Kamphof of Zwolle, 27cm.; 10½in diam £200-300

608 **A SET OF FOURTEEN PLATES BY CHRISTOPHER BANKS I OF BEWDLEY**, circa 1760, each with touch adverso, eleven with ownership initials E.G. on reverse and three with initials M.T. (Cot O.P.5418) (Homer & Hall: Provincial Pewterers p.138) 24cm.; 9½in £350-450





616



619



617

609 A SET OF NINE PLATES BY JOHN INGRAM OF BEWDLEY, circa 1780, each with touch adverso, six with ownership initials E.G., (O.P.5725), (Homer & Hall: Provincial Pewterers p.142), 23cm.; 9in; two similar larger, 24cm.; 9½in; and a plate by Stynt Duncombe, (12) £350-450

610 A CYLINDRICAL EMBOSSED FONT OF MEDIEVAL DESIGN, the body decorated with busts holding armorial shields within Gothic arches, 31cm.; 12in diam £100-200

611 A COLLECTION OF EIGHT HOT-WATER PLATES, 19th Century, with side handles, 24cm.; 9½in diam average £100-200

612 A LARGE OVAL HOT-WATER DISH BY JOHN INGRAM OF BEWDLEY, circa 1780, side ring handles broken, 63cm.; 25in; and a circular hot-water dish with engraved crest, circa 1780, 33cm.; 13in, (2) £200-300

613 A CHARGER BY JOHN DUNCOMBE, mid 18th Century, touch and hallmarks adverso, 56cm.; 22in £250-350

614 A SINGLE-REEDED RIM DEEP BOTTOM CHARGER BY JOHN DUNCOMBE, 51cm.; 20in; a dish by the same maker, 46cm.; 18in; and a pair of dishes with ownership E.G. one by Stynt Duncombe, the other by John Ingram, 46cm.; 18in (4) £400-600

615 FIVE ASSORTED DISHES BY STYNT DUNCOMBE, circa 1780, each with ownership initials E.G. 41 to 30cm.; 16 to 11½in; and a dish by John Duncombe, 38cm.; 15in, (6) £350-500

BRONZE, BRASS & COPPER

616 A GILT-BRONZE FIGURE OF CHRIST AS THE GOOD SHEPHERD, Continental 17th Century, 8cm.; 3¼in on wood plinth £300-500

617 A COLLECTION OF NINE OVAL PORTRAIT RELIEF BUSTS OF ROMAN EMPERORS, 19th Century, each with foliate wreath border, bronze alloy and lead alloy, 16cm.; 6½in £400-600

618 A BRONZE LEOPARD MASK, Continental 18th Century, open mouth possibly for a fountain mask, 14cm.; 5½in £200-300

(For colour illustration see page 30)

619 A PAIR OF GILT BRASS CANDLESTICKS, Dutch or English circa 1690, each stop-fluted column stem on gadrooned octagonal base, maker's mark A.D. in a row of 'hallmarks' and each engraved with a crest of a hog's head, 26cm.; 10¼in £2,000-3,000

Literature; Gentle & Field, *English Domestic Brass*, pl 10. As in the Gentle & Field example they are in repoussé sheet brass constructed in four sections including the detachable drip-pans, and have wooden fillers under the base.