

EXF

Days of Sale

WEALDEN ROOM – Tuesday 23rd November 1993 at 10.30 am

Oak and Country Furniture,
Primitive Paintings and Textiles

WEALDEN ROOM – Tuesday 23rd November 1993 at 2.00 pm

Treen, Metalwork and Works of Art

On View:

Friday 19th November 1993, 10.00 am–4.00 pm, Saturday 20th November 1993, 9.30 am–12.30 pm,
SUNDAY 21st NOVEMBER 1993, 2.00 pm–4.30 pm and Monday 22nd November 1993, 10.00 am–4.00 pm

CISSBURY ROOM – Wednesday 24th November 1993 at 10.30 am

British Pottery and Porcelain

On View:

Saturday 20th November 1993, 9.30 am–12.30 pm, **SUNDAY, 21st NOVEMBER 1993, 2.00 pm–4.30 pm**,
Monday 22nd November 1993, 10.00 am–4.00 pm and Tuesday 23rd November 1993, 10.00 am–4.00 pm

WEALDEN ROOM – Monday 29th November 1993 at 11.00 am

Oriental Carpets and Rugs

On View: Friday 26th November 1993, 10.00 am–4.00 pm,

Saturday 27th November 1993, 9.30 am–12.30 pm and Monday 29th November 1993, 9.00 am–11.00 am

BLACKDOWN ROOM – Monday 29th November 1993 at 2.30 pm

Chinese Snuff Bottles

On View:

Saturday 27th November 1993, 9.30 am–12.30 pm and Monday 29th November 1993, 10.00 am–1.00 pm

which will be sold

by

SOTHEBY'S

FOUNDED 1744

SUMMERS PLACE

Billingshurst, West Sussex RH14 9AD

Telephone: (0403) 783933

Fax: (0403) 785153

Fax for Absentee Bids only: (0403) 785332

Erick Art Reference Library

Illustrated Catalogue £10.00

Sotheby's London: Registered at 34-35 New Bond Street, London W1A 2AA
No. 1222607

Front Cover: Lot 825
Back Cover: Lots 188, 415, 557, 521, 801, 806A

SPECIAL VIEWING
Sunday, 21st Nov.
2.00 to 4.30 pm

456 AN ENGINE TURNED WOOD BOWL AND COVER, Continental early 19th Century, 17cm; 6¹/₂in diameter; and a French sycamore vase shaped mortar, 14cm; 5¹/₂in £100-150

457 A BOXWOOD AND IVORY INLAID FOLDING CRIBBAGE BOARD, 18th Century, the boxwood panels engraved with flowering vases, 28cm; 11in when open; and an inlaid cribbage board, 19th Century (2) £120-180

458 MISCELLANEOUS TREEN, late 18th/early 19th Century, comprising of turned wood wig stand, 42cm; 16¹/₂in; a cylindrical inkstand and cover, 10cm; 4in; a boxwood sail maker's tool, 21cm; 8¹/₂in; a lignum vitae mushroom shaped smoother; a turned wood pot and cover and a rosewood ring stand with baluster stem, 9cm; 3¹/₂in (6) £200-300

459 A CARVED GILT WOOD RELIEF MODEL OF AN EAGLE, circa 1820, with spread wings and rocky base, 41cm; 16in wide; and a gilt wood rope-twist section, 18th Century, 15cm; 6in wide, (2) £120-180

(For colour illustration see page 28)

460 A CARVED AND PAINTED WOOD MONEY-BOX IN THE FORM OF A TOBY JUG, modelled as an auctioneer seated on a ladder-back chair holding a gavel and an oval portrait miniature after Gainsborough, slit in hat and hinged flap at rear, 36cm; 14¹/₂in £2,000-3,000

For a related example see Pinto, 'Treen' plate 41

461 A CHIP-CARVED WOODEN BOX, possibly Welsh, 18th Century, in the form of a book with bone inlay of a heart and two diamonds, two pieces of inlay lacking, 21.5cm; 8¹/₂in wide £150-250

(For colour illustration see page 28)

462 A LARGE LIGNUM VITAE WASSAIL BOWL, English late 17th Century, the ring turned body with a later silver plated rim on shallow knopped stem and stepped turned foot, 36cm; 14¹/₂in high, 32.3cm; 12³/₄in diam £2,500-3,500

Literature: Edward H Pinto, 'Treen' plates 31, 32, 40 for related examples

463 A CARVED WOOD STAY-BUSK, 1795, chip-carved with a heart, a rosette a flower and other motifs and dated 1795, end chipped and wormed, 31cm; 12in £150-200

(For colour illustration see page 28)

464 A PAIR OF WALNUT CARYATID CLASSICAL FIGURES, French early 19th Century, he with a scroll, she with a rose, 102cm; 3ft 4in £600-900

(For colour illustration see page 28)

465 A PAIR OF SILVERED WOOD RELIEFS OF RIVER GODS, each classical figure reclining, 66cm; 26in wide £500-700

(For colour illustration see page 28)

466 AN OAK OVERDOOR CREST, 19th Century, of a goats' head and the motto 'CALM' in a cartouche scroll, 117cm; 46in wide £250-300

(For colour illustration see page 28)

467 A PAIR OF CARVED OAK CORNUCOPIA, 18th Century, each with fruit and flowers issuing from an urn, now joined together, 125cm; 49in wide £300-500

(For colour illustration see page 28)

468 AN OAK PIERCED RELIEF PANEL, 18th Century, of a putto amongst fruit and foliage, 61cm; 24in £150-200

469 AN OAK CARYATID FIGURE, late 17th Century design, 75cm, 29¹/₂in. £150-200

470 A SCRIMSHAW WHALE'S TOOTH, circa 1860, engraved with a lady and a gentleman, 13cm; 5in. £100-150

471 A VICTORIAN DRAWING SLATE, circa 1870, comprising eight prints under a glass slate within pine frame, 24cm; 9¹/₂in; together with a japanned tin snuff box lid painted with a bust of "Butcher Cumberland" wearing Garter Star, circa 1750, now in a wood circular frame, 12cm; 4³/₄in (2) £100-150

472 A COPPER WEATHERVANE, late 19th Century, in the form of a cockerel with silhouette head and tail and moulded body, 40cm; 15¹/₂in £300-500

473 A TINPLATE CHURCHWARDEN'S PIPE SHOP SIGN, 19th Century, painted with bands of red and white, 204cm; 6ft 8in £250-350

474 A WOOD AND COMPOSITION MODEL OF A FOUR MASTED SHIP, 1915, inscribed 'Jules & Albert Verbiest 15.11.1915', in glazed carved wood rectangular case with painted backplate, 46cm; 18in wide overall £200-300

(For colour illustration see page 29)

475 A TINPLATE AND BRASS MOUNTED LANTERN, Continental early 19th Century, the cylindrical body with castellated domed cover and leather bound handle, 33cm; 13in; together with a similar smaller lantern £150-200

(For colour illustration see page 29)

476 A TINPLATE STUDENT'S LAMP, mid 19th Century, with twin adjustable nozzles and shades on circular base, green paint finish, 48cm; 19in £200-300

(For colour illustration see page 29)

477 A TINPLATE CANDLE LANTERN, 19th Century, the tall shade pierced with holes, 30cm; 12in; and a similar smaller lantern with fretwork pierced shade, 20cm; 8in £150-200

(For colour illustration see page 29)

478 A TINPLATE 'THOUSAND EYE' LANTERN, late 19th Century, with domed cover and scroll handle, dark green paint finish, 33cm; 13in; and a similar smaller later lantern £150-200

479 A STAINED AND LEADED GLASS ARMORIAL PANEL, 19th Century, the shaped panel with a coat-of-arms and motto 'UTPROSIM' (Foley family) in a foliate and sea-horse border, 46cm; 18in £200-300

PEWTER

480 A PAIR OF BROAD-RIMMED 'MOUNT EDGE CUMBE' STYLE PLATES, each with reeded rim stamped with the letters M.E. and hallmarks of the maker W.H. (M.P.M.5694B), 24.5cm; 9 5/8in £200-300

481 A WRIGGLED-WORK CHARGER, N.European, 18th Century, the single reeded rim with a band of foliage, the centre with a shield, indistinct marks adverso, 46cm; 18¹/₄in £200-300

(For colour illustration see page 29)

482 AN ENGRAVED 'PASSOVER' PLATE, German, late 18th Century, decorated with an eight point star, four birds and circles, and inscription border, indistinct touch dated 1774, 22cm; 8³/₄in £250-350

(For colour illustration see page 29)

483 AN ENGRAVED 'PURIM' PLATE, German, late 18th Century, decorated with Mordechai and Hamen, within surround of stylised foliage and inscription border, indistinct marks, 22.5cm; 8³/₄in £250-350

483A A SET OF THREE SCOTTISH LIDDED MEASURES, Glasgow, circa 1840, each of baluster form with domed lid with a central stamp, shell thumbpiece, graduated from pint to gill, the pint 16.5cm; 6¹/₂in £150-200

483B A COLLECTION OF POT-BELLIED BALUSTER MEASURES AND TAVERN MUGS WITH BRASS RIMS, 19th Century, comprising pint and half pint tankard of straight sided form, the measures each inscribed 'red lion', and a bell-metal measure, (7) £100-150

484 A 'TULIP' SHAPED PINT TAVERN MUG, late 18th Century, engraved with a tulip and ownership initials, with hallmarks to rim and touch in base, possibly Ingram & Hunt of Bewdley, the handle of double scroll form, 12cm; 4³/₄in; and a similar tankard, no maker's marks, 12cm; 4³/₄in (2) £80-120

485 A TREASURY INKSTAND, circa 1800/20, the double hinged flap stamped by the maker T.H. possibly by the maker Thomas Holgate of Liverpool, (M.P.M.5687), on half ball feet, the underside with touch of stag, (O.P.6052, M.P.M.5631), and a half-pint tavern mug by the same maker with touch in base and on rim, straight sided tapering with diamond attention handle terminal, (2) £100-150

486 **A COLLECTION OF THREE QUART TAVERN MUGS**, one with side spout and 'tuck-in' foot and attention handle terminal by Edgar & Sons with a Bristol town mark, circa 1840, 15cm.; 6in; another by Yates and Birch with ownership inscription and town stamp with double scroll handle, and the third of straight sided tapering form with indistinct hallmarks to rim and ownership initials, late 18th Century, £150-200

(For colour illustration see page 29)

487 **THREE STRAIGHT SIDED TAPERING TAVERN MUGS**, late 18th/early 19th Century, comprising a Quart with attention handle terminal, a pint with side spout, crowned C.C. stamp and V.R. marks, a half-pint with a row of indistinct hallmarks and attention handle terminal, (3) £150-200

488 **A QUART TAVERN MUG**, late 18th Century, of straight sided tapering form with double scroll handle, the rim with W.R. stamp, a row of four lion passant, the base inscribed with ownership details and 'Bastard Arms, Clipston street St. Marylebone', touch in base of I★A?, and a spouted pint mug by Richard Yates, circa 1800, with town stamp and initials and hallmarks to rim, (2) £100-150

489 **A COLLECTION OF THREE HALF-PINT TAVERN MUGS**, late 18th/early 19th Century, one by Morgan of Bristol with golden fleece stamp and attention terminal, one by Ingram & Hunt of Bewdley with ball terminal and another similar with town stamp and attention terminal, (3) £120-180

(For colour illustration see page 29)

490 **A PINT TAVERN MUG BY RANDOLPH MORING**, late 18th Century, the straight sided tapering body with W.R. stamp, attention terminal, and inscribed 'J. Denyer Rockingham Arms Newington', and a similar half-pint with shield inscription, (2) £150-200

491 **A QUART TAVERN MUG BY THOMAS ABBOTT**, circa 1800, the straight sided tapering body with a single raised girdle and tongued handle, and a similar pint mug with shield inscription 'Turks Head Inn' (2) £100-150

(For colour illustration see page 29)

492 **A BEADED RIM TRENCHER SALT**, early 18th Century, with matching domed foot, holed, 7.5cm.; 3in diam £150-200

(For colour illustration see page 29)

493 **A SALT ON THREE LEGS**, 18th Century, the legs of shell and volute form, 8cm.; 3in diam; a Scottish deer horn foot and pewter mounted snuff box by Durie, circa 1820, and two double measures, one flattened, (4) £100-150

494 **A PAIR OF BULBOUS SALTS**, late 18th Century, each with everted top rim and matching foot, 7cm.; 2½in diam; and a cup salt circa 1780 on stepped domed base, 8cm.; 3in (3) £100-150

495 **THREE BULBOUS SALTS**, late 18th Century, two with beaded rims and a third smaller, the largest 8cm.; 3in diam £80-120

496 **TWO SIMILAR HALF-PINT FOOTED CUPS**, circa 1820, one with ball handle terminal the other double scroll handle, and a child's mug probably late 18th Century, of straight sided tapering form with double scroll handle and reeded base, 6cm.; 2½in £80-120

497 **A LIDDED MUSTARD POT**, early 19th Century, of baluster form with domed lid and plume thumbpiece, 10cm.; 4in; a similar pot with plain erect thumbpiece, and a baluster lidded spice pot, late 18th Century, 11cm.; 4½in (3) £120-160

(For colour illustration see page 29)

498 **A BALUSTER CASTOR**, Dutch or English 18th Century, 16cm.; 6½in; and three castors or peppers each of vase shaped form with domed covers on circular feet, English late 18th Century, (4) £150-200

(For colour illustration see page 29)

499 **A CAUDLE CUP OR CHILD'S MUG**, early 18th Century, of plain straight sided form with single loop handle, 5.5cm.; 2½in high £180-220

(For colour illustration see page 29)

500 **AN OVAL TOBACCO JAR AND COVER BY RICHARD PITT**, circa 1780, with beaded rims and button finial, 13cm.; 5in £120-180

For a related example by the same maker see Cotterell, 'Old Pewter' pl LXXXVI a

(For colour illustration see page 29)

501 **A DOUBLE VOLUTE QUART BALUSTER MEASURE**, circa 1780, the flat cover with engraved circles and trefoil attachment to thumbpiece, 19cm.; 7½in £250-350

(For colour illustration see page 29)

502 **TWO LIDDED BALUSTER GILL MEASURES**, late 18th Century, one with double volute thumbpiece, and the other of North Country ball type, 10cm.; 4in £150-200

(For colour illustration see page 28)

503 **A PUNCH BOWL BY CHARLES MAXEY**, circa 1760, with single reeded rim and raised girdle on domed foot, touch in base, inscribed with wriggle-work 'THE LONDON PUNCH HOUSE 1760', 25.5cm.; 10in diam; 15.5cm.; 6in high £500-700

(For colour illustration see page 29)

504 **A SCOTTISH LAVER OR FLAGON**, late 18th Century, of usual tapering form with a raised girdle and double plume thumbpiece, 25cm.; 9½in £300-400

(For colour illustration see page 29)

505 **A QUART LIDDED 'TULIP' TANKARD**, circa 1780, possibly Bristol, touch of R.B. in base, with domed cover and open chairback thumbpiece and double scroll handle, 19cm.; 7½in £250-300

(For colour illustration see page 29)

506 **A PAIR OF CHALICES**, circa 1765, each with tapering drum with a raised girdle, on knopped stem and domed turned circular base, 20cm.; 7½in £300-500

For a related pair see Cotterell, 'Old Pewter' plate XXX b

(For colour illustration see page 29)

507 **A LIDDED ALE JUG**, late 18th Century, the unusually bulbous body with open chairback thumbpiece and domed cover and front spout with a grill, 19cm.; 7½in £250-350

(For colour illustration see page 29)

508 **A LIDLESS ALE JUG**, late 18th Century, of shouldered bulbous form with front spout, 12cm.; 4½in £80-120

509 **A PAIR OF CANDLESTICKS**, circa 1830, each of baluster form with domed circular beaded base and push-up ejector, one nozzle damaged, 20cm.; 8in; and a pair of Continental candlesticks with side ejector mechanism and circular bases, 21cm.; 8½in (4) £120-180

510 **A TRIPLE REEDED RIM DISH BY THE MAKER I.G.** circa 1690, with ownership initials and hallmarks to rim, (O.P.5619), 42cm.; 16½in £200-300

511 **A PAIR OF PLATES BY JOHN JACKSON**, circa 1690, with single reeded rims, hallmarks and ownership initials to rim and touch adverso, 23cm.; 9in £150-200

These are unusual in having single reeded rims for such a date.

512 **A SINGLE REEDED RIM PLATE**, circa 1700, with hallmarks of the maker I.P. and ownership initials to rim and indistinct touch adverso, 23cm.; 9in; and a triple reeded rim plate, (2) £100-150

513 **A PAIR OF SCOTTISH CHALICES**, late 18th Century, each bowl on a swilling baluster stem with a single raised girdle on stepped domed foot, 23.5cm.; 9½in £150-200

514 **A SCOTTISH LAVER**, mid 18th Century, the tapering body with a raised girdle, flat lid and twin cusp thumbpiece, indistinct touch in base, 33cm.; 13in £250-350

515 **A SET OF SIX GRADUATED METRIC LIDDED MEASURES**, North French late 19th Century, of straight sided form from LITRE to DBLE CENTILITRE, 21cm.; 8½in £150-200

516 **AN ENGRAVED DISH**, German late 18th Century, the rim with stylised foliage, 37cm.; 14½in; and a Dutch twin eared porringer by the maker P.D.B., 21cm.; 8½in wide overall, (2) £150-200



462



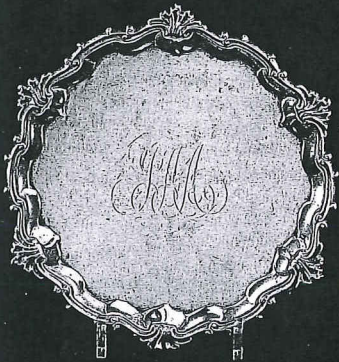
460



503



521



532



562

564

563



558



404



465

466

467

468

465

552

553

580

534

538

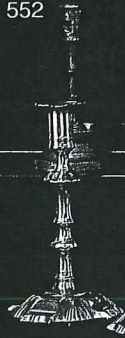
561

548

577

577

580



533



555



574



534



574



539



572



548



572



536



523-528



405



415



Part lot 426

Part lot 427



434

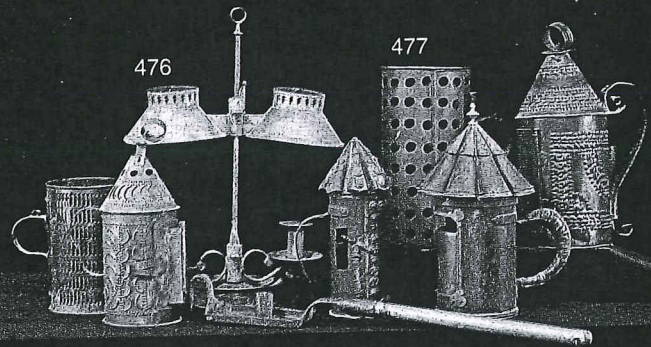


440



433

437



476

477

439 (2)

448

437

444

445

436

435

440

477

478

607

475

475

478



560

558

559

556

557

505

498

483

487

504

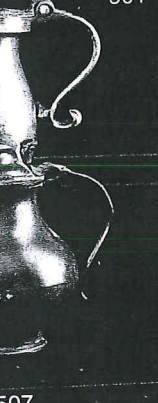
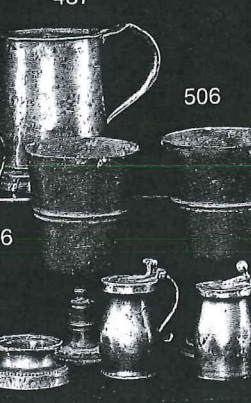
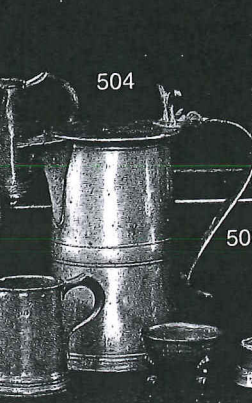
487

506

490

501

482



500

490

499

487

504

493

492

502

502

508

507

517 **A COLLECTION OF TEN PLATES**, English 18th Century, including three by Samuel Duncombe; two by John Duncombe; one by Richard Yates, etc, 24cm.; 9¹/₂in average £280-350

518 **MISCELLANEOUS PEWTER**, 19th Century, comprising six pot bellied lidless measures the largest of pint capacity, four tavern mugs, two Britannia metal goblets, a salt and pepper a double ended measure and a reproduction measure £150-200

519 **A PAIR OF EJECTOR CANDLESTICKS**, circa 1830, each of baluster form on domed circular bases, 22cm.; 8¹/₂in £150-200

520 **A PAIR OF HALF-PINT FOOTED CUPS**, early 19th Century, each with 'Salop' town mark and indistinct makers' mark, an unusually large bulbous salt with ownership details I.H. 1826, 9cm.; 3¹/₂in diam; and a cream jug, mid 19th Century, (4) £150-200

(For colour illustration see page 28)
521 **A LARGE SPIRE FLAGON BY JOHN NEWHAM**, London circa 1720, the tapering body with flared foot and two girdles of ovolo moulding, the scroll handle with shield terminal, knopped domed cover and scroll thumbpiece, touch under base and hallmarks to rim, 41cm.; 16in £1,500-1,800

For a related example by the same maker see the Worshipful Company of Pewterers catalogue No 144. fig 18a

522 **A SET OF SIX POT BELLIED LIDLESS BALUSTER MEASURES**, circa 1826, each with the maker's mark KING struck in base and William IV and Victorian capacity stamps, graduated from Quart to ¹/₄gill £200-250

(For colour illustration see page 29)
523 **A GUERNSEY LIDDED MEASURE**, 18th Century, of usual pear shaped form with twin bud thumbpiece and flat cover, indistinct touch of *S., 22cm.; 8³/₄in £300-400

(For colour illustration see page 29)
524 **A JERSEY LIDDED MEASURE**, 18th Century, of usual pear shaped form with twin acorn thumbpiece and G.R. stamp to rim, 28cm.; 11in £250-300

(For colour illustration see page 29)
525 **A JERSEY LIDDED MEASURE**, 18th Century, of usual pear shaped form, twin acorn thumbpiece, touch of I.N. under cover, and G.R. stamp to rim, 21cm.; 8¹/₂in £250-300

(For colour illustration see page 29)
526 **A SIMILAR SMALLER JERSEY MEASURE**, 18th Century, G.R. stamp to rim and ownership initials to handle, 16.5cm.; 6¹/₂in £180-220

(For colour illustration see page 29)
527 **A SIMILAR SMALLER JERSEY MEASURE**, 18th Century, G.R. stamp to rim and ownership initials to handle, 14cm.; 5¹/₂in £180-220

(For colour illustration see page 29)
528 **A SIMILAR SMALLER JERSEY MEASURE**, 18th Century, end of cover damaged, 11cm.; 4¹/₂in £100-150

529 **A CHARGER**, English mid to late 18th Century, the rim with an engraved crest, no visible touch marks, 55.5cm.; 21³/₄in diam £200-300

530 **A LIDDED PEAR SHAPED FLAGON**, Flemish circa 1800, with shell thumbpiece and half-domed cover, touch of A.V.E. and A.J.V.E. with an angel, 23.5cm.; 9¹/₂in £150-200

531 **MISCELLANEOUS PEWTER**, late 18th/19th Century, including four tavern mugs (two quart), four assorted measures, four castors, a mustard pot and a plate, (14) £150-200

BRASS & COPPER

(For colour illustration see page 28)
532 **A SILVER PLATED BRASS SALVER**, Georgian circa 1760, with engraved ownership initials within shell cast rococo rim on three scroll feet, with hoof terminals, 25.5cm.; 10in diameter. £1,200-1,800
Silvering possibly later.

(For colour illustration see page 28)
533 **A PAIR OF GEORGIAN BRASS CANDLESTICKS**, circa 1750, each with domed shell and petal base and double knopped stem, 22cm.; 8³/₄in £300-500

(For colour illustration see page 28)
534 **A PAIR OF QUEEN ANNE BRASS CANDLESTICKS**, circa 1710, each with domed circular base, and baluster knopped stem, 17cm.; 6³/₄in £250-400

535 **A DUTCH BRASS WATER JUG**, early 19th Century, the bulbous tapering body with a tall spout, hinged cover and loop handle, 26cm.; 10¹/₂in; and a similar two handled water jug, 20.5cm.; 8in £200-250

(For colour illustration see page 28)
536 **A GEORGIAN BRASS ALE JUG**, mid 18th Century, the spouted tapering body with a domed cover and ovolo moulded foot, 21cm.; 8¹/₂in £400-600

537 **A PAIR OF GEORGIAN BRASS CANDLESTICKS**, circa 1800, each with a square base and tulip shaped stem, signed by the maker J.S., 17.5cm.; 7in; and a pair of brass 'beehive' stem candlesticks, circa 1820, 16cm.; 6¹/₂in (4) £200-300

(For colour illustration see page 28)
538 **A BELL METAL TRAVELLING GOBLET**, Scottish, late 18th Century, the tulip shaped cup on knopped stem and circular foot, unscrewing to reverse for travelling, 11cm.; 4¹/₂in £100-150

Literature: 'Fine Brass for Collectors' by F. Gordon Roe and Peter Desborough, Connoisseur March 1939.

(For colour illustration see page 28)
539 **A MINIATURE BRASS AND COPPER CRIB**, 19th Century, with alternating bands of copper and brass, possibly an apprentice piece, 12cm.; 4³/₄in long £100-200

540 **A CAST BRASS INK POT**, circa 1820, in the form of an urn on a square base, with guilloche decoration, 11cm.; 4¹/₂in; a brass snuffer scissors with heart shaped handles, early 19th Century, and a stamped brass snuffer tray (3) £150-250

541 **A COLLECTION OF FOUR BRASS NUT CRACKERS**, 18th Century, each with engraved canted vice with baluster and bow handles, 10cm.; 4in £150-200

542 **A BRASS WALL SCONCE**, in the form of a dish with an embossed sunflower, now supporting two scrolled candle nozzles, 41cm.; 16in £100-200

543 **TWO BRASS LADLES**, early 19th Century, each with pierced handle, the larger 45cm.; 17¹/₂in; and a bell metal ladle with stamped numbers to stem, 36cm.; 14in (3) £150-200

The last ladle was excavated from Bishop's Palace, Fulham.

544 **A PAIR OF BRASS 'TAVERN' CANDLESTICKS**, circa 1900, each with domed foot, baluster stem, wide mid drip-pan and bell in upper stem, 33cm.; 13in £300-500

545 **A BRASS KETTLE**, circa 1830, with four ball feet and domed cover and turned wood handle, 20cm.; 8in; and a brass preserve pan with iron handle, (2) £120-180

546 **A PAIR OF BRASS ALTARSTICKS**, Continental 18th Century design, each with multi-knopped baluster stem on triformal cast base now with nozzles, 73cm.; 2ft 5in £300-500

547 **A PAIR OF GEORGIAN SWIRL BASE CANDLESTICKS**, circa 1750, each with double knopped gadrooned ball stem and gadrooned integral sconces, minor damages, solder restoration to one, 23.5cm.; 9¹/₂in £300-500

(For colour illustration see page 28)
548 **A PAIR OF GEORGIAN BRASS CANDLESTICKS BY THE MAKER E.K.**, circa 1740, each with petal base and double knopped stem, 20cm.; 8in, 'one with hole' £250-400

549 **A BRASS TABLE STANDING OIL LAMP**, Flemish 18th Century, with vase shaped reservoir with two spouts on slender cylindrical stem and wide dished base, 45cm.; 17¹/₂in and a similar single spout oil lamp, 40cm.; 15¹/₂in (2) £300-500

