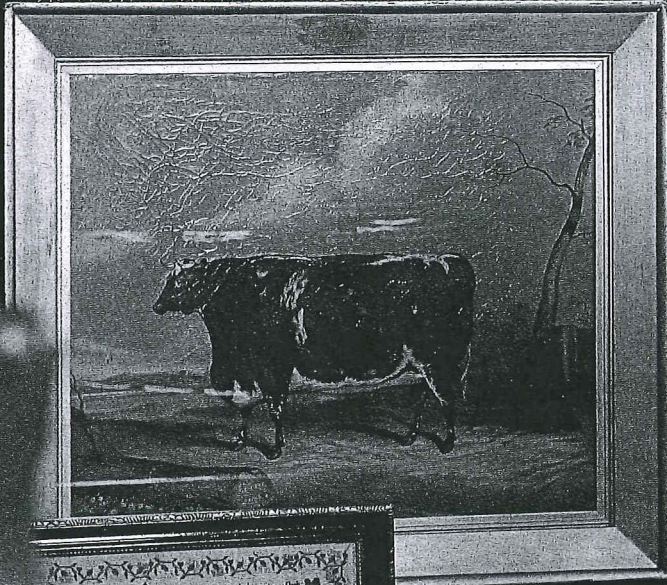


EXD

SUSSEX

PAINTINGS & FURNITURE
WORKS OF ART
POTTERY & PORCELAIN
CARPETS & RUGS

22 November to
28 November 1994



SOTHEBY'S
FOUNDED 1744

473 **A CARVED AND PAINTED WOOD BUTCHER'S SHOP MODEL, 20th Century**, in the form of a shop with three windows and inscription, hung with game and joints of meat with two Butchers and a Butcher's block, glazed ebonised case, 56cm; 1ft 10in wide overall £500-800

(For colour illustration see page 54)

474 **A CARVED AND PAINTED WOOD ROCKING HORSE, English circa 1840**, on green painted pine rockers, piebald paint decoration with cream paint overlay, £700-1,000

475 **A TIN-PLATE BARGE-WARE WATER JUG, late 19th Century**, of tapering cylindrical form painted with flowers and houses in landscapes, hinged cover and swing handle, 35cm; 14in £150-200

476 **A HIDE COVERED CHILD'S PONY, late 19th Century**, standing with glass eyes and leather saddle on a flat wood base, 89cm; 2ft 11in £300-500

477 **A CARVED WOOD FAIRGROUND HORSE, Victorian late 19th Century**, with one foreleg raised, later cream and polychrome paint finish, later brass pole, 109cm; 3ft 7in £500-800

478 **A PAIR OF EMBOSSED CARD PICTURES OF PIGEONS, mid 19th Century**, each bird embossed from the rear set in a barn interior in gilt-wood frame, 29.5 by 37cm; 11½ by 14½in overall £150-200

BRITISH AND CONTINENTAL PEWTER

479 **TWO PAIRS OF DISHES BY SAMUEL ELLIS, mid 18th Century**, all with touch and ownership initials adverso, (O.P.1547), 38cm; 15in and 33.5cm; 13½in diam; six ¼ gill lidless baluster measures and a hot-water plate (11) £350-450

(For colour illustration see page 54)

480 **A SCOTTISH CRESTED TAPPIT HEN, late 18th Century**, of usual form with domed cover and urn finial and erect thumbpiece, the rim inscribed with two pairs of ownership initials, 29cm; 11½in £250-350

481 **A COLLECTION OF THREE SINGLE-REEDED RIM DISHES, English 18th Century**, marks indistinct, two 38cm; 15in the other 34cm; 13½in £200-300

482 **A COLLECTION OF TWELVE PLATES, English late 18th Century**, by Samuel and John Duncombe and other assorted makers, 24cm; 9½in average £250-350

483 **MISCELLANEOUS PEWTER, 19th Century**, comprising two pot-bellied baluster measures of Quart and pint capacity, two straight sided tapering tavern mugs of pint and ½ pint capacity, a pair of pint tankards by Gaskell and Chambers, another ½ pint mug, a beaker, a salt, a pepper and a treasury inkstand with hinged top flap (11) £150-250

484 **A DISH BY WILLIAM COOK OF BRISTOL, late 18th Century**, (O.P.1095) 34cm; 13½in; two further dishes, 30.5cm; 12in; and a set of seven small plates, 15cm; 6in (10) £200-250

485 **A COLLECTION OF SEVEN LIDLESS BALUSTER MEASURES, second half 19th Century**, comprising pint, 2 gill, 2 ½ gill and 2 ¼ gill; and a baluster shaped pot with screw lid and loop handle, 20cm; 8in (8) £100-150

486 **A SET OF SIX PLATES BY SAMUEL DUNCOMBE, late 18th Century**, touch adverso (O.P.1466), 23cm; 9in £200-250

487 **A COLLECTION OF FIVE TAVERN MUGS, late 18th/19th Century**, comprising two straight sided tapering quart mugs and a spouted quart, a straight sided tapering pint by Bush and Walter, late 18th Century, and a spouted pint (5) £180-220

488 **A PAIR OF CANDLESTICKS OF GEORGIAN DESIGN BY THE MAKER N.R.** each with canted rectangular dished base and baluster knopped stem, 15cm; 6in £80-120

489 **A PAIR OF PLATES AND A DISH BY JOHN SEDGWICK OF YORK, circa 1730**, touch adverso, 40 and 23cm; 16 and 9in; an eighteenth Century dish, 40cm; 16in and another pair of plates, 18th Century (6) £250-350

490 **A SET OF TWELVE PLATES, probably Dutch 20th Century**, each with shield engraved beaded rim, the backs stamped 'TIN' & 'MAASE', 26.5cm; 10½in £150-200

491 **A GERMAN EWER AND BASIN, possibly Frankfurt, 18th Century**, the ewer with scroll handle and a band of foliage on gadrooned lower base and foot, 18cm; 7in; the basin with two bands of gadrooning and touch adverso of three angels holding sword and scales and initialed I.D.F., 32cm; 12½in both with holes or other damage, £150-200

For similar examples see H.Sneider 'Zinn I' plate 1254, and Peter Hornsby, 'Pewter of the Western World' plate 798

492 **A SWISS HEXAGONAL FLASK, circa 1800**, with ring top and screw-on cover above a body with a tall spout with hinged flap engraved with flowers and initialed A.L., 34cm; 13½in; and a French brass rococo candlestick circa 1750, with fluted baluster stem and domed base, 24cm; 9½in £150-200

493 **A TULIP SHAPED LIDDED TANKARD, possibly Bristol, second half 18th Century**, the double domed cover with open chairback thumbpiece above baluster body, 19.5cm; 7¾in £200-300

For similar examples see Cotterell, 'Old Pewter' plate LXXIIIa

494 **A SIMILAR LIDDED TULIP SHAPED TANKARD, possibly Bristol second half 18th Century**, with uncommon ram's horn thumbpiece, 19.5cm; 7¾in £150-250

495 **A SET OF ELEVEN PLATES BY FRANZ CRACHI, South German ? early 19th Century**, each with a single-reeded rim and engraved ownership initials N.W., all with touch of lady holding anchor and cornucopia and initialed F.C., two with additional touch inscribed 'Franz Crachi M.W. 1817' 22cm; 8¾in £100-200

495A **A JERSEY UNLIDDED QUART MEASURE, 18th Century**, of usual pear shaped form (type B) with crowned GR stamp to rim, S. Shemell collection label under base, 18cm; 7in. £200-300

495B **A LIDDED FLAGON, English possibly mid 17th Century**, the tall straight sided tapering body with a 'bun' cover and twin cusp thumbpiece, a scrolled handle with spade terminal and stepped domed base, 26cm; 10½in. £500-800

BRASS AND COPPER

496 **A BRASS SIX BRANCH CHANDELIER, early 20th Century**, the ball and baluster stem with ring top supporting 'S' scrolled branches with wide drip pans and an upper tier of six scroll petal reflectors, 50cm; 1ft 8in £300-500

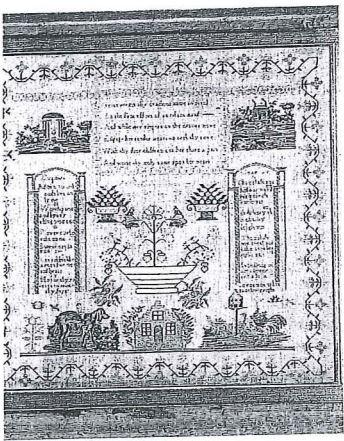
497 **A BRASS CHANDELIER OF 18TH CENTURY DESIGN, early 20th Century**, the ball and baluster stem supporting two tiers of 'S' shaped branches terminating in wide drip pans, 69cm; 2ft 3in high £500-800

498 **A BRASS ALMS DISH, German 17th/18th Century**, with gadrooned raised boss surrounded by a band of Gothic inscription and a broad rim with a band of punched foliage, damages, 43cm; 17in and a cast brass shovel of William and Mary design with knopped handle, 60cm; 23½in (2) £200-300

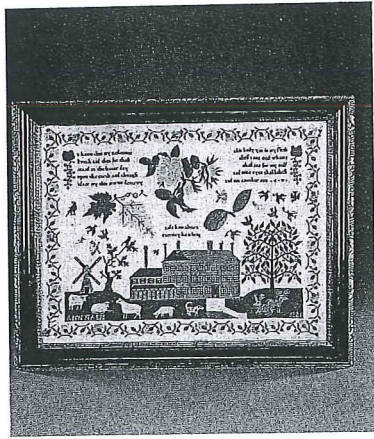
498A **A BRASS PINT TANKARD, English circa 1830**, of straight sided tapering form on stepped base with slightly everted rim, stamped 'IMP PINT, 1 PINT', with a crowned WE stamp and a town ? stamp and initials to handle, 12cm; 4¾in £150-250

(For illustration see front cover)

499 **A LATE GEORGIAN BRASS CHAMBERSTICK, circa 1820**, the wide and deep dished base supporting a nozzle with ejector mechanism, 22cm; 8½in diam £150-200



404



406



417



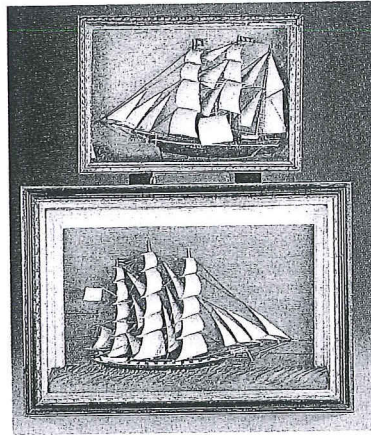
422



437



438a

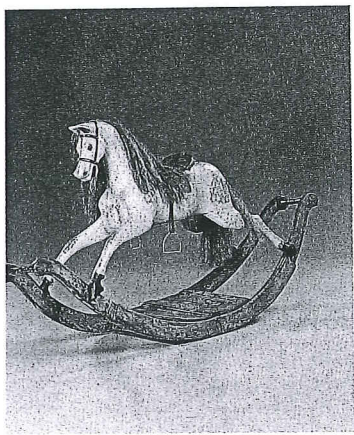


460

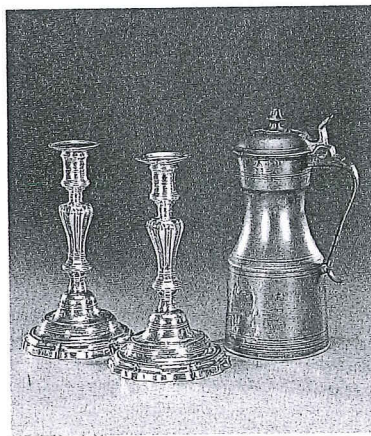
462



469

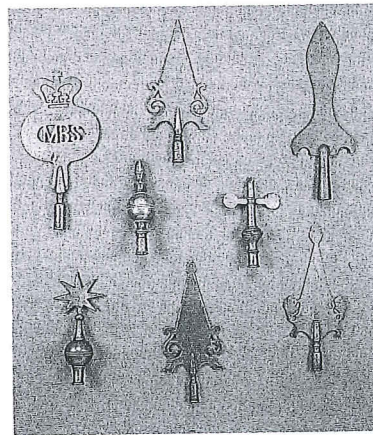


474



522

480



506
506

506

500
500

500

505
503



514



508
509

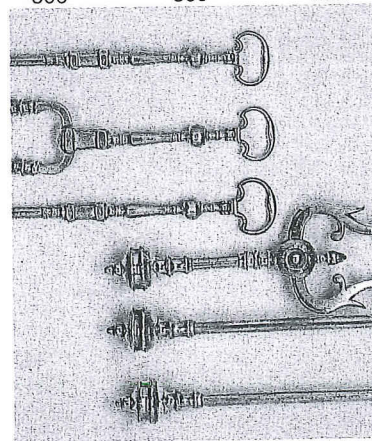
531
516

529
516

529
508



539



554

555



565

563

568