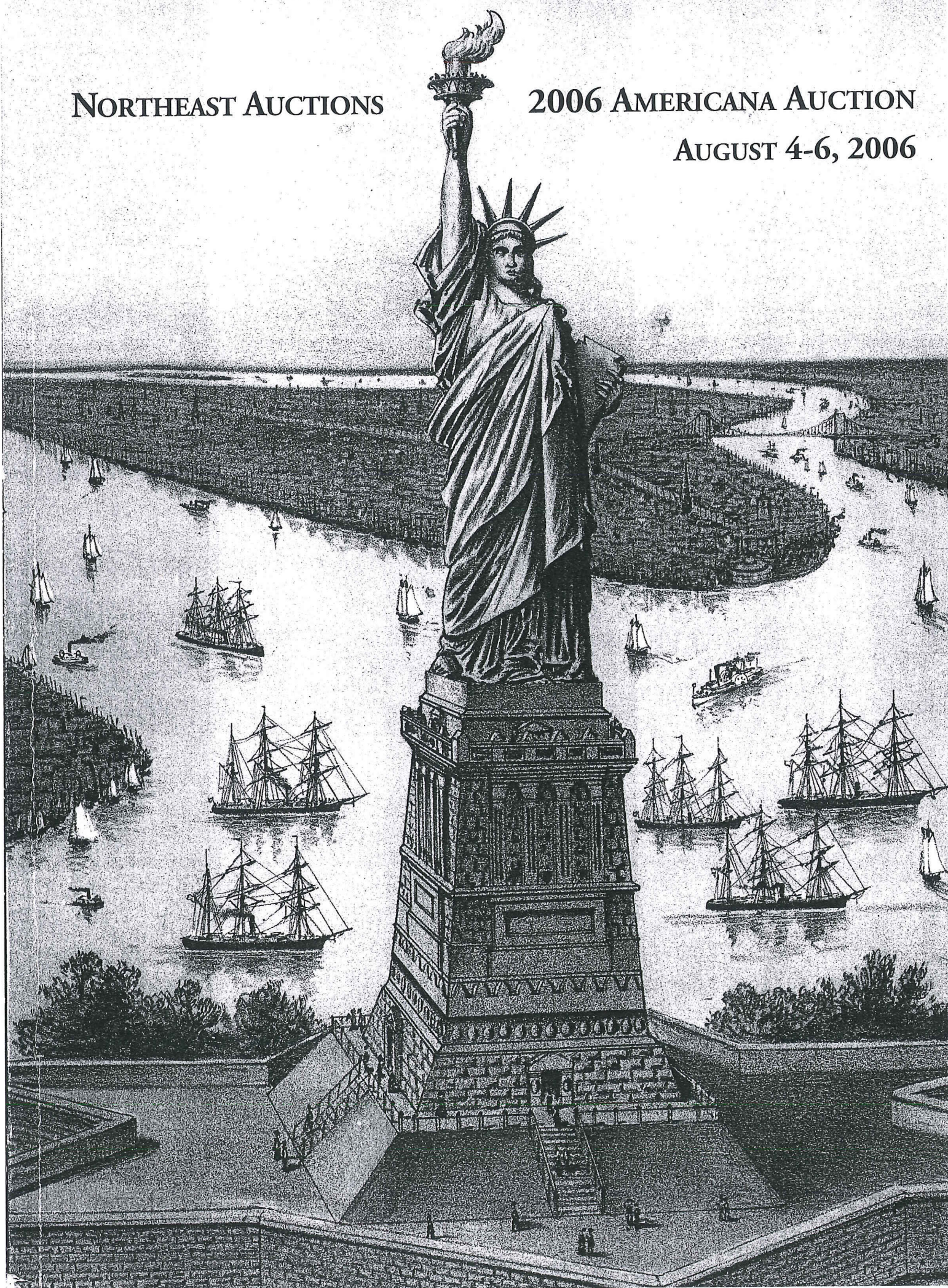


EWV

NORTHEAST AUCTIONS

2006 AMERICANA AUCTION

AUGUST 4-6, 2006





333-334

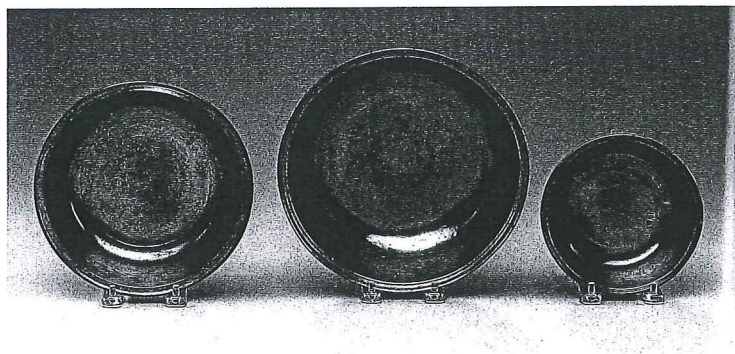
333 J.W. CAHILL & CO. PEWTER TWO-PART SPITTOON WITH HANDLE. Height 3 inches, diameter 8 inches.

334 AMERICAN PEWTER TWO-PART SPITTOON WITH HANDLE. Attributed to F. Ben Smith, Beverly, Massachusetts. Height 3 ¼ inches, diameter 6 inches.

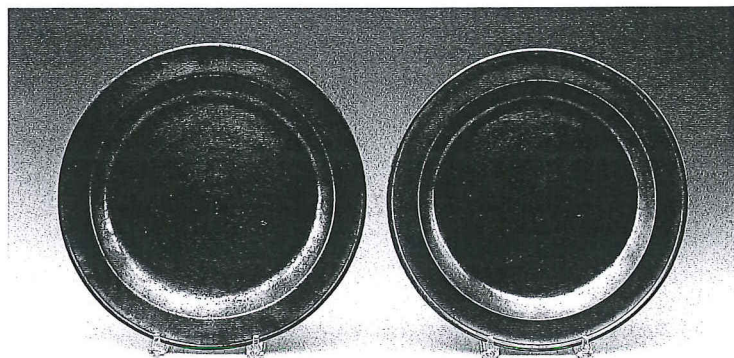
335 SAMUEL HAMLIN, PROVIDENCE RHODE ISLAND (1767-1801) PEWTER BASIN. Marked J-158. Height 7 ⅞ inches.

336 DAVID MELVILLE, NEWPORT RHODE ISLAND PEWTER BASIN. Marked J-214. Diameter 9 inches.

337 SAMUEL HAMLIN, PROVIDENCE, RHODE ISLAND (1761-1801) PEWTER BASIN. Mark J-159. Diameter 5 ¾ inches.



335-337



338-339

338 THOMAS DANFORTH II, MIDDLETOWN, CONNECTICUT (1755-1782) PEWTER DEEP DISH. Marked J-113. Diameter 13 ¼ inches.

339 EDWARD DANFORTH (1786-1799), HARTFORD CONNECTICUT PEWTER DEEP DISH. Marked J-84. Diameter 13 inches.

340 AMERICAN PEWTER QUART MUG, THOMAS DANFORTH III, CONNECTICUT AND PHILADELPHIA, 1777-1818. Of flared cylindrical form, applied S-scroll handle, touchmark exterior side beneath rim near handle. Height 5 ¾ inches.

341 BOSTON, MASSACHUSETTS PEWTER CHARGER BY RICHARD AUSTIN, CIRCA 1792-1817. With molded rim, the reverse with standing Indian and "BOSTON" touchmark. Diameter 15 inches.



340



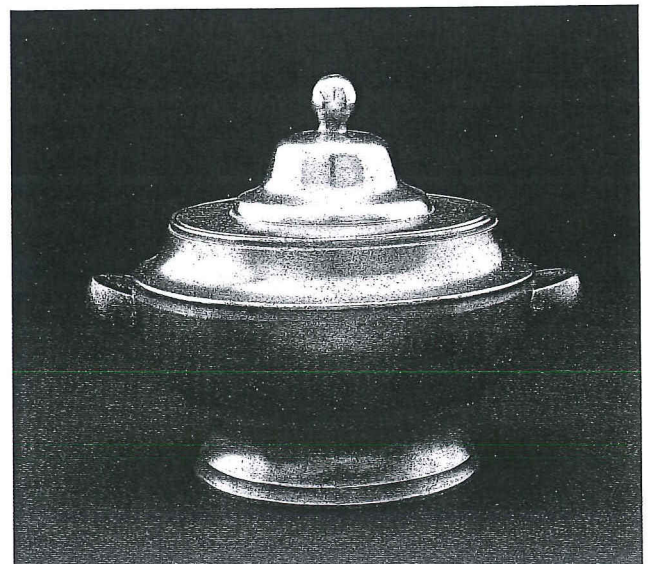
342

342 BROOK FARM ASSOCIATION (1844-1847) WEST ROXBURY, MASSACHUSETTS. EXTREMELY RARE PEWTER FLUID LAMP WITH SAUCER BASE. Ephraim Capen joined the Brook Farm Association for Industry and Education on May 12, 1844, and it is believed that he was the only pewterer among the members of the short lived Brook Farm commune. This rare example of craftsmanship is representative of the artisanal, working commune, which, although short lived, remains a topic in both social and artistic debates today. Marked "BROOK FARM," on the base. Height, 7 ½ inches.

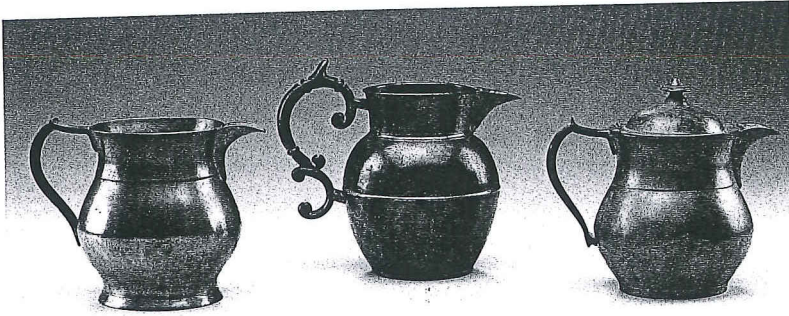
343 PHILADELPHIA, PENNSYLVANIA PEWTER BLAKSLEE BARNS DEEP PLATE. CIRCA 1812-17. With molded rim, the reverse with double touchmark of eagle holding a banner inscribed "B BARNS." Diameter 11 inches.

344 GEORGE RICHARDSON (1828-1845), GLENNORE COUNTY, CRANSTON RHODE ISLAND. RARE COVERED SUGAR BOWL. Marked J-237. Height 5 ½ inches.

345 PROVIDENCE, RHODE ISLAND PEWTER DEEP PLATE BY WILLIAM CALDER, CIRCA 1817-1856. With molded rim, the reverse with circular eagle touchmark within "CALDER/ PROVID." Diameter 11 inches.



344

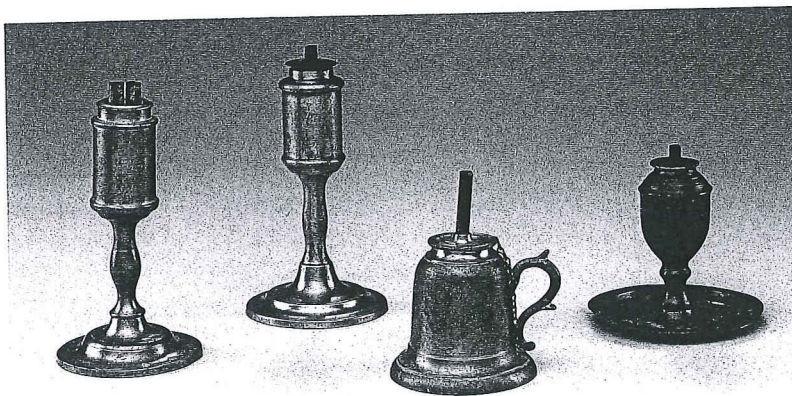


346-348

346 BOARDMAN AND HART (1828-1853), NEW YORK, NEW YORK. PEWTER PITCHER OF OVOID FORM. Marked "BOARDMAN & HART, N-YORK," on base. Height 6 ½ inches.

347 G. RICHARDSON (1818-1845), BOSTON, MASSACHUSETTS AND CRANSTON, RHODE ISLAND. PEWTER PITCHER. Double C-scrolled handle, mid-band, and heart shaped opening at spout. Marked "G. RICHARDSON, CRANSTON R.I.," on the base. Height 8 ¼ inches.

348 FREEMAN PORTER (1830-1860), WESTBROOK, MAINE. COVERED PEWTER PITCHER. C-scroll handle, mid-band, and conical knob. Height 8 inches.

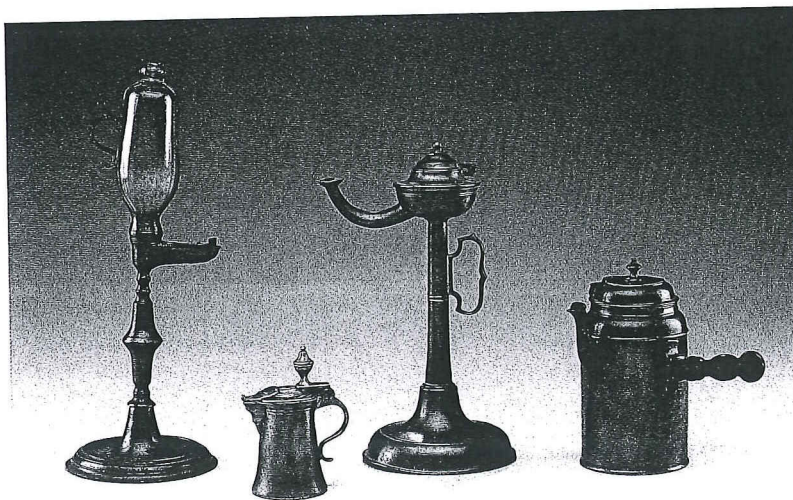


349

349 FOUR AMERICAN PEWTER SMALL OIL LAMPS. Varied shapes. The first lamp has a bell-shaped font and C-scroll handle, the second has a saucer base and acorn font, the third and fourth both have cylindrical fonts. Heights, 4 inches, 4 inches, 5 ½ inches, 5 ½ inches.

350 EXTREMELY RARE PEWTER TIME, OR CLOCK LAMP. Knopped stand with a cylindrical glass font wrapped in a pewter hour marker. Known mainly as "curious or intriguing specimens of the pewterer's art," these lamps were not widely distributed and are thus, a rarity among pewter objects. Height 14 inches.

Literature: Examples of similar clock lamps are illustrated and discussed in Leroy Thwing's, "Flickering Flames: A History of Domestic Lighting through the Ages." p. 40-42, plate 94.



350-353

351 CONTINENTAL PEWTER MEASURE OF FLARING FORM WITH URN FINIAL. Height 5 ½ inches.

352 CONTINENTAL PEWTER WHALE OIL LAMP, EARLY NINETEENTH CENTURY.

The cylindrical standard supporting a circular font and spout, fitted with a handle. Height 11 inches.

Literature: Ibid., p. 29-31, plate 33.

353 SCOTTISH PEWTER SIDE-HANDLED COFFEPOW WITH A TURNED WOODEN HANDLE. Marked on inside of base. Height 7 ½ inches.

354 SAMUEL HAMLIN JUNIOR (1801-1856), PROVIDENCE, RHODE ISLAND. PEWTER TEA POT. Covered with a C-scrrolled handle, and a threaded, conical finial. Height 8 inches.

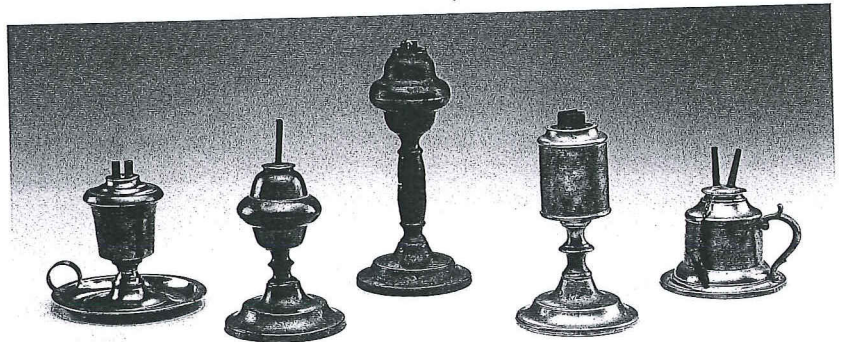


354-356

355 ROSWELL GLEASON (1822-1871), DORCHESTER, MASSACHUSETTS. PEWTER TEA POT. Lidded with a turned ovoid shape, c-scroll handle, and a conical, floral knop. Marked R. Gleason on the base. Height 8 3/4 inches.

356 POSSIBLY ATTRIBUTED TO ROBERT BONYNGE, (1731-1763), BOSTON, MASSACHUSETTS. RARE AMERICAN PEWTER TEAPOT. Covered with C-scroll handle and conical knop. Marked "LONDON, WARRANTED," on the base. Height, 7 1/2 inches.

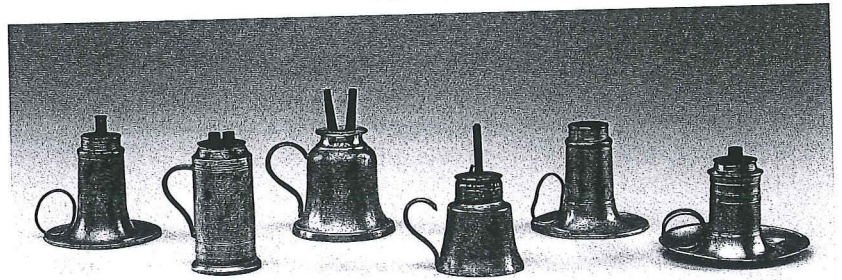
Literature: The attribution of the London mark to Robert Bonyng is made in Ledlie Irwin Laughlin's, "Pewter in America: Its Makers & Their Marks," plate CIV, number 835.



357-361

357 REED AND BARTON, TAUNTON, MASSACHUSETTS (1860-1880). PEWTER WHALE OIL LAMP WITH SAUCER BASE AND LOOP HANDLE. Marked "REED AND BARTON." Height 5 inches.

358 SMITH AND CO., BOSTON, MASSACHUSETTS (1852-1855) PEWTER BALUSTER FORM FLUID LAMP. Marked "SMITH AND CO." Overall height 7 inches.



362

359 PEWTER BALUSTER FORM FLUID LAMP, J.B. WOODBURY (1820-1835), NEW ENGLAND. Marked J-294. Overall height 8 1/2 inches.

360 PEWTER CYLINDRICAL FORM FLUID LAMP BY ROSWELL GLEASON (1822-1871), DORCHESTER, MASSACHUSETTS. Marked J-147. Height 6 3/4 inches.

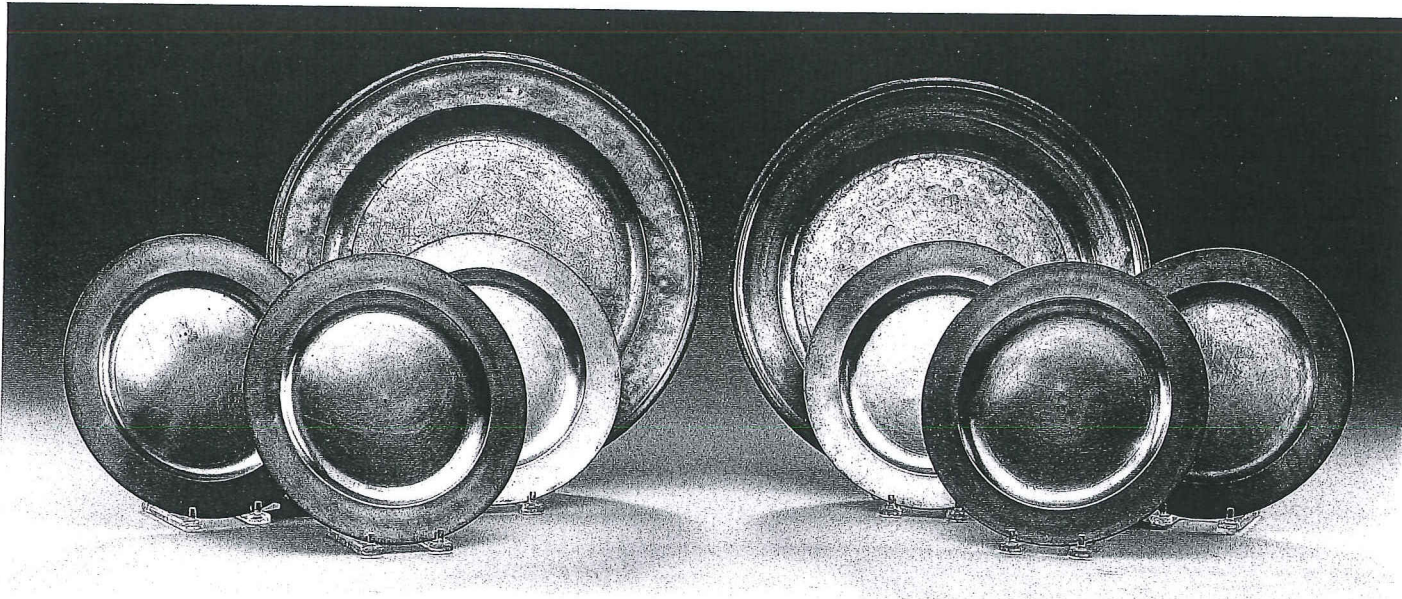
362 GROUP OF SIX AMERICAN SMALL-HANDLED PEWTER LAMPS. The first, second, and third, all have a saucer base, ring handle, and cylindrical font. The fourth has a cylindrical font, and C-scroll handle. The fifth has a bell-shaped font, C-scroll handle, and brass cap, and the sixth has a bell-shaped font and c-scroll handle. The heights are 2 1/2 inches, 3 inches, 2 3/4 inches, 3 1/4 inches, 3 1/4 inches and 3 1/2 inches.

361 FLUID LAMP WITH A CYLINDRICAL FONT AND SCROLL HANDLE. CAPEN AND MOLINEUX (1848-1854), NEW YORK, NEW YORK. Marked "CAPEN & MOLINEUX, N.Y." on the base, and patented on the top,, "J. NEWELL'S, PATENT OCT. 4. 1853." Overall height 4 3/4 inches.

363 PEWTER TEA POT. Covered, ovoid-shaped pot with a turned, conical knop and C-scroll handle. Height 7 1/2 inches.

364 TWO ENGLISH PEWTER FOOD MOLDS. The first a square covered cake mold with basket of fruit cover, the second a cylindrical example with nut cluster on cover. Dimensions of first 3 1/2 inches x 6 inches x 6 inches.

365 SMALL AMERICAN PEWTER BASIN. Diameter 3 1/2 inches.



366-368

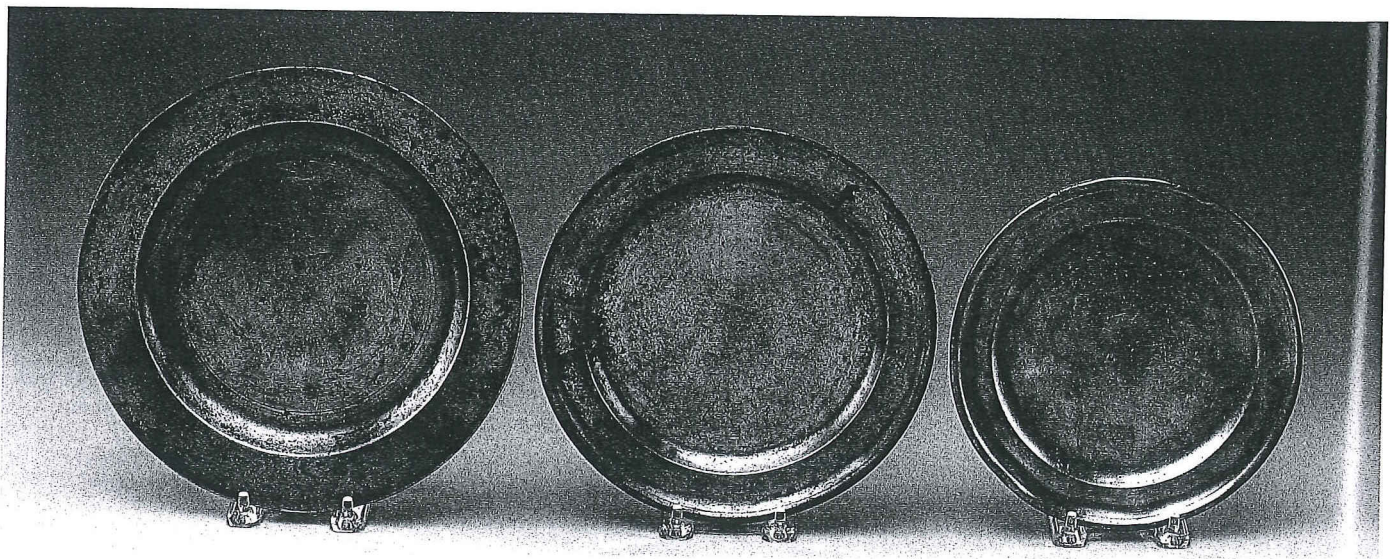
366 DANIEL MELVILLE, NEWPORT, RHODE ISLAND (1755-1793), SET OF SIX SMOOTH BRIM PEWTER PLATES. Marked J-482. Diameter 9 ½ inches.

369 SAMUEL AND THOMAS MELVILLE (1793-1800), NEWPORT, RHODE ISLAND PEWTER PLATE. Marked J-218. Diameter 8 ½ inches.

367 GERSHAM JONES, BOSTON, MASSACHUSETTS PEWTER CHARGER. Diameter 15 inches.

370 SAMUEL AND THOMAS MELVILLE (1793-1800), NEWPORT, RHODE ISLAND PEWTER PLATE. Marked J-218. Diameter 7 ⅝ inches.

368 WILLIAM BILLINGS, PROVIDENCE, RHODE ISLAND (1791-1806) PEWTER CHARGER. Diameter 14 ½ inches.



369-370