

EWO

Pictures, Treen and Works of Art, Furniture, Textiles, Metalwork, British Pottery and Porcelain

**Sale B09757
and B09759**

Auction: Tuesday 22 June 1999 at 10 am and 2 pm
Wednesday 23 June 1999 at 10.30 am

Absentee Bids

This catalogue may be referred to as B09757 and B09759

For bids only: Tel (01403) 833656 Fax (01403) 833696

Catalogue

£10 at the gallery, £11 by mail,
£12 overseas

Principal Offices Worldwide

London (171) 293 5000

New York (212) 606 7000

Los Angeles (310) 274-0340

Chicago (312) 670 0010

Paris 33 (1) 53 05 53 05

Geneva 41 (22) 908 4800

Tokyo 81 (3) 3230 2755

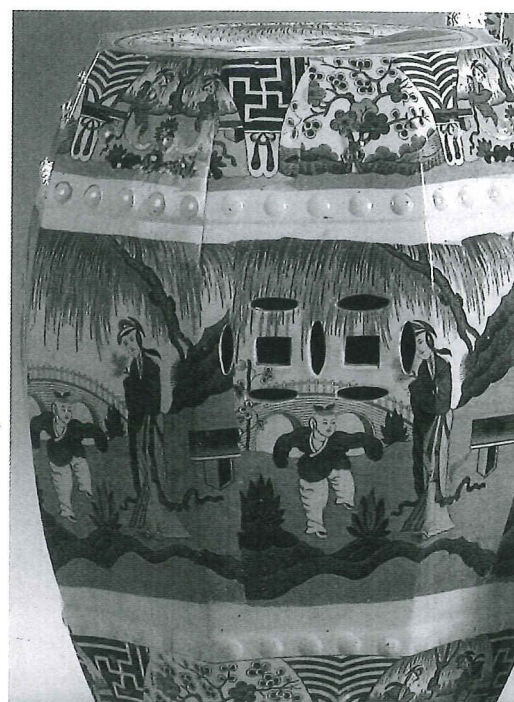
Hong Kong (852) 2 524 8121

SOTHEBY'S

Summers Place, Billingshurst, West Sussex RH14 9AD

The Oak Sale and British Ceramics

22nd-23rd June 1999



SOTHEBY'S SOUTH

Sussex

455 A Tapestry shawl, Dogra Period circa 1840

constructed of various panels, the red field with large patterned borders of seeping botteh invading outer borders, the fringes of multicoloured strips, dated 351 by 129cm; 11ft 6in by 4ft 3in

£200-300

456 An Empire wallpaper panel circa 1815

on a 'framboise' red and gold ground, decorated with a frieze of garlands and medallions imitating Lyon silks, *damages*, with another wallpaper panel on a turquoise ground with octagonal polychrome medallions made of roses encircling imperial bees, stamped *Serziart, damages*, 185cm high; 110cm wide; 6ft 1in, 3ft 7½in and 225cm high, 92cm wide; 7ft 4in by 3ft ½in, together with two further fragments (4)

The red panel is likely to be a copy of a Pernon silk, the decoration is derived from the Empress Josephine's Petit Salon at St Cloud. The second is likely to be a reproduction of the silk panels of Napoleon's suite at Versailles.

£80-120

457 A silk embroidered bedspread, made for the European market Oriental, circa 1920

the cream satin embroidered in silks with sprays of flowers, within wide complementary border of garlands of flowers

218 by 267cm; 7ft 2in by 8ft 9in

£200-300

458 A patchwork coverlet with 'Tumbling Blocks' design circa 1880

the design made from silks, taffetas and brocades, within an outer border of 'flower bed' design in hexagonal shapes, backed with cerise pink silk, 192 by 147cm; 6ft 4in by 4ft 10in

£100-120



486

509

512-516

552-54

519

534

BRITISH AND CONTINENTAL PEWTER

The following lots 459-524 are from the collection of Reg Franklin.

For literature on the spoons including some photographs see Ronald F Homer 'Five centuries of base metal spoons' 1975.

459 A triple reeded rim charger circa 1690

the rim with a row of four hallmarks of rampant lions in shields and the ownership initials and date P D 1697

51.5cm., 20¼in

£800-1,200

Illustrated p12

460 A single reeded rim plate Benjamin Blackwell, circa 1740

with a row of hallmarks and ownership initials to front rim and touch to reverse (O.P. 437A)

23cm., 9in

£100-150

461 A broad rimmed dish 17th century

the reverse with an unrecorded touchmark of WP with a crown and date 1655, the front with a row of four indistinct hallmarks and ownership triad, Cotterell authentication label and Rollason collection label to reverse, restoration

42cm., 16½in

£500-800

Illustrated p12

462 A broad rimmed dish late 17th century

the centre with a slightly raised boss, the rim with a row of indistinct hallmarks

43cm., 16¾in

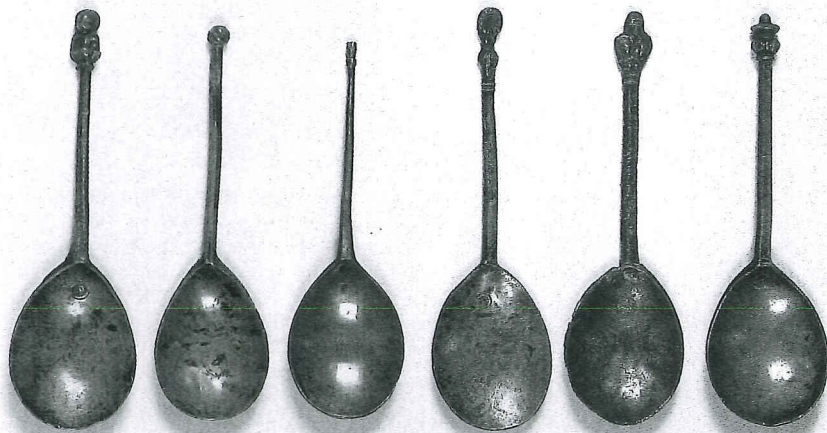
£400-600

463 A single reeded rim dish circa 1740

with an indistinct row of hallmarks and ownership initials to reverse

38cm., 15in

£100-150



464

465

466

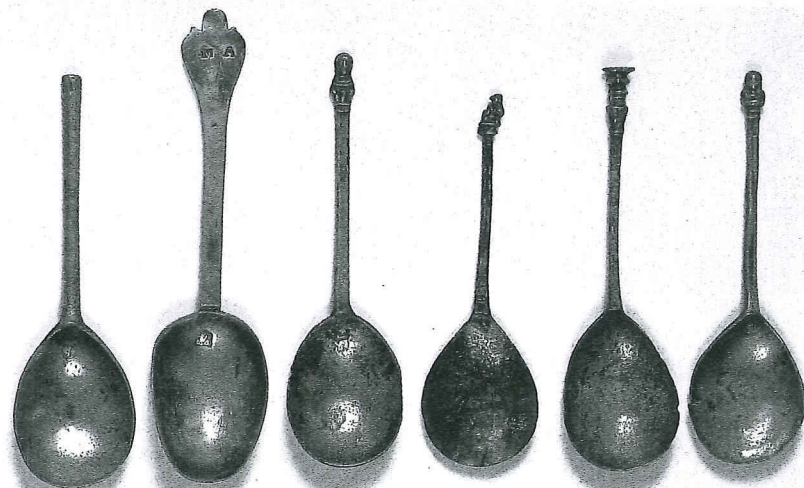
467

468

487

- 464 A Maidenhead knop pewter spoon**
mid 16th century
 hexagonal stem and touch of I.W. in bowl
 16cm., 6¼in
 see Homer p.33 fig.f. Ex Peal collection
 £500-800

- 465 A wrythen ball knop pewter spoon**
15th century
 hexagonal stem and fleur-de-lys touch in bowl
 15cm., 6in
 Ex Woolmer and Cooper collections. The mark illustrated Homer p.56 (as a Melon knop)
 £200-300



469

470

471

472

473

474

- 466 A pewter spoon with a latten sceptre knop**
early 16th century
 hexagonal stem and makers mark to bowl
 14.5cm., 5 5/8in
 see Homer p.38 for illustration and discussion
 £400-600

- 467 A rare English horsehoof knop spoon**
mid to late 16th century
 with hexagonal stem and star mark with a letter I to bowl
 16cm., 6¼in
 see Homer p.34 for illustration and discussion and p.55 for the mark. Illustrated Hornsby 'Pewter of the Western World' fig.571. Ex Peal collection
 £400-600



475

476

477

478

479

- 468 An Alderman knop pewter spoon**
late 16th century
 hexagonal stem and rose and crown with makers initials C.R. in bowl
 16cm., 6¼in
 Ex Dunn, Sutherland Graham and Peal collections. See Homer p.26 for illustration and discussion and mark on p.55
 £400-600

- 469 **A stump end pewter spoon mid to late 16th century**
makers touch in bowl
17cm., 6 5/8in
for illustration and discussion see Homer p.41 (bottom of three) and p.56 for T P makers mark
£250-350
- 470 **A pewter trifold spoon circa 1680**
ownership initials M.A. to end, touch dated 87 ? in bowl, a row of three hall-marks to rear handle
19.5cm., 7 7/8in
£250-400
- 471 **A rare pewter monks head spoon mid 16th century**
chamfered rectangular stem
17cm., 6 3/4in
for illustration see Homer p.42 (second row) and p.30 for discussion. Ex Peal collection
£400-600
- 472 **A rare lion sejant knob spoon 15th century**
with fig shaped bowl and mark to stem
15.5cm., 6in
for illustration see Homer p.21
£400-600
- 473 **A decorated seal top pewter spoon late 16th century**
with chamfered stem and mark in bowl
16.5cm., 6 1/2in
for illustration see Homer p.42 top right and Hornsby 'Pewter of the Western World' fig.566
£200-300
- 474 **A maidenhead knob pewter spoon early 16th century**
hexagonal stem and indistinct touch to bowl
16cm., 6 1/4in
Ex Michaelis and Bishop Vellacott collections
£300-500
- 475 **A Moor's head knob latten spoon circa 1650**
with reeded stem
17cm., 6 3/4in
see Homer p.35 for illustration and discussion
£200-300
- 476 **An apostle knob latten spoon circa 1640**
with reeded stem and makers mark H.G. with three spoons to bowl
17.8cm., 7in
for similar see Homer p.26 for illustration and p.54 for mark
£200-300
- 477 **A strawberry knob latten spoon circa 1640**
with reeded stem and makers mark of three spoons initialled D.? H.
18cm., 7in
for illustration see Homer p.2 (bottom photo, third from left)
£200-300
- 478 **A Medieval pewter spoon**
the tapering handle with the raised lettering 'IESVS:RAZARENVS', the bowl with raised linear and beaded motifs
9.8cm., 3 7/8in
compare the style of script with the 14th century lid fig 16 from the Museum of London exhibition catalogue 'Pewter. A celebration of the craft'
£700-1,000
- 479 **A Medieval pewter figure knob spoon**
with a bearded male figure terminal and raised linear decoration to figure and stem and engraved wavy lines to bowl
13cm., 5 1/2in
compare with excavated medieval century pilgrim badges and related material for similarities
£500-700
- 480 **An acorn knob latten spoon 15th century or earlier**
with mandolin shaped bowl
17cm., 6 7/8in
for similar see Homer p.19, centre
£200-300
- 481 **A cut knob latten spoon probably 13th century**
with round bowl
16.3cm., 6 3/4in
£150-200
- 482 **An acorn knob latten spoon probably 14th century**
the flattened stem stamped twice with a fleur-de-lys
18cm., 7in
Ex Port collection
£200-300
- 483 **An acorn or cut knob latten spoon 15th century or earlier**
with fig shaped bowl
17cm., 6 3/4in
£200-300
- 484 **A mother and child knob latten spoon French, probably 16th century**
with silvered bowl
14cm., 5 1/2in
£200-300
- 485 **A wrythen ball knob latten spoon 15th century**
with fig shaped bowl
13cm., 5in
£200-300
- 486 **A triple reeded rim plate John Raymond, circa 1700**
a row of hallmarks to front rim, the touch and wriggle-work engraved owners initials and date IE 1702 to reverse, Cotterell authentication label to reverse, (O.P.5889; M.P.M. 3851), restoration
24cm., 9 1/2in
This plate is sold with the Cotterell authentication certificate to Melvyn Rollason dated 1934
£300-500
Illustrated p49

- 487 **A baluster knob pewter spoon**
circa 1570
with hexagonal stem and crowned
rose makers mark in bowl
15.8cm., 6¼in
For similar see Homer p29 (top). Ex
Peal Collection
Illustrated p50
- 487^A **A pineapple knob latten spoon**
15th century
13cm., 5¼in
£200-300
- 488 **A pewter spoon with a latten
seal top**
mid 16th century
with hexagonal stem
16cm., 6¼in
for similar see Homer p.39 (centre)
£200-300
- 489 **A pewter acorn knob spoon**
circa 1500
rounded stem and touch to bowl
16cm., 6¼in
for similar see Homer p.24
£200-300
- 490 **A Medieval pewter spoon with
latten wrythen knob**
with elongated mandolin bowl
16.2cm., 6 3/8in
£200-300
- 491 **Two miscast knopped pewter
spoons**
16th century
with fig shaped bowls
16cm., 6¼in
£100-200
- 492 **Two miscast knopped pewter
spoons**
16th century
with fig shaped bowls
14.5cm., 5¾in
Ex Peal collection
£100-200
- 493 **A seal top pewter spoon**
16th century
indistinct touch in bowl
15cm., 6in
illustrated Hornsby 'Pewter of the
Western World' fig.567. Ex Peal
collection
£200-300
- 494 **A crown seal top pewter spoon**
16th century
with elongated bowl and
hexagonal stem
16cm., 6¼in
Ex Isher collection
£120-180
- 495 **A slip top pewter spoon**
early 17th century
ownership initials and makers
mark of R.A. with two keys to bowl
17cm., 6¾in
for mark see Homer p.56 (fourth
row)
£180-220
- 496 **A decorated seal top pewter
spoon**
16th century
with hexagonal stem and indistinct
touch in bowl
16.3cm., 6½in
Ex Peal collection
£200-300
- 497 **A mitre knob pewter spoon**
15th century
diamond shaped tapering stem,
restored
14.5cm., 5¾in
for illustration and discussion see
Homer p.37
£100-200
- 498 **An acorn knob pewter spoon**
15th century
with hexagonal stem and fig
shaped bowl
14.5cm., 5¾in
£100-200
- 499 **A seal top pewter spoon**
circa 1630
with hexagonal stem
15cm., 5 7/8in
illustrated Homer p.39 (far right).
Homer suggests this was made by
an itinerant pewterer because of its
crude seal.
£100-200
- 500 **A horned head-dress pewter
spoon**
with elongated bowl
17cm., 6 5/8in
£250-350
- 501 **A child's pewter slip top spoon**
early 17th century
touch of crossed keys and initials
M.A. in bowl
9.5cm., 3¾in
for mark see Homer p.56 (right
hand column)
£100-150
- 502 **A gilded wrythen ball knob
pewter spoon**
late 15th century
hexagonal stem and oval bowl
16cm., 6¼in
for similar see Homer p.42
£200-300
- 503 **Two pewter spoons**
16th century
comprising a baluster seal top and
a crown seal top
the former 14cm., 5½in
the former Ex Peal collection
£100-200
- 504 **A wrythen ball knob pewter
spoon**
early 16th century
a fleur de lys touch in bowl, *restored*
join
14.5cm., 5¾in
£200-300
- 505 **A stump end pewter spoon**
late 16th century
crowned rose mark in bowl
15cm., 6in
£80-120
- 506 **An elm spoon rack**
English, early 19th century
with arched top and two shelves
36cm., 13½in
£200-300
p.29 (top). Ex Christopher Peal
collection
£300-400



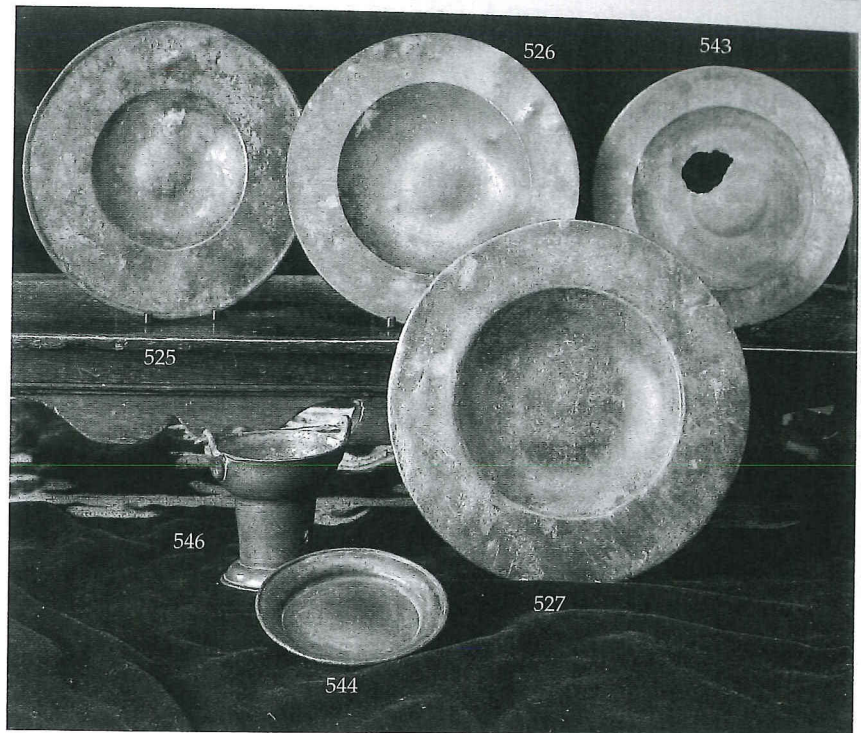
518 508 510

- 507 A pewter ale jug**
Gerardin & Watson, circa 1820
 with front spout and stepped domed cover with open chairback thumbpiece and pear shaped body
 21cm., 8¼in
 £150-250

- 508 A spire flagon**
Ingram & Hunt of Bewdley, late 18th century
 the tapering body with a single raised girdle and spreading domed foot, domed cover with acorn finial and open chairback thumbpiece, row of hallmarks to rim (O.P.5708)
 25cm., 10in
 £500-800

- 509 A tulip shaped lidded tankard**
Ingram & Hunt of Bewdley, circa 1780
 on a domed foot with a domed cover and plume thumbpiece with 'broken' handle, I & H touch in base
 18.5cm., 7½in
 £250-350
 Illustrated p49

- 510 A lidded tankard**
circa 1690
 makers mark of RL and crown in a circle inside base, the tapering body with a single raised girdle and domed foot, the double domed cover with front denticulations and a beaded plume thumbpiece, cut card work to handle with horn scroll terminal, cover restored
 19.5cm., 7½in
 £1,000-1,500



- 511 A pair of quart tavern mugs**
Robert Galbraith of Glasgow, circa 1840
 each of inverted baluster form, and a Victorian quart pot bellied lidless measure (3)
 £150-200

- 512 A ball baluster measure**
North Country, circa 1700-20
 of half gill capacity with wedge and ball thumbpiece and ring turned cover, strut attachment to handle terminal
 9cm., 3½in
 £300-400
 Illustrated p49

- 513 A bud baluster measure**
circa 1700-20
 of half gill capacity, with ring turned body and cover, strut attachment to handle terminal
 9cm., 3½in
 Ex Christopher Peal collection
 £200-300
 Illustrated p49

- 514 A double volute baluster measure**
circa 1750-80
 of half gill capacity with ring turned cover and fleur-de-lys attachment and makers mark A I to rim
 8cm., 3 1/8in
 £150-200
 Illustrated p49

- 515 A double volute baluster measure**
circa 1750-80
 of half pint capacity, with ring turned cover and fleur-de-lys attachment
 13cm., 5¼in
 £150-250
 Illustrated p49

- 516 A Jersey half noggin lidded measure**
18th century
 with crowned GR verification stamp to rim and scratched ownership initials C N V to handle
 8cm., 3¼in
 £200-300
 Illustrated p49

- 517 A West Country spirit measure circa 1830**
of gill capacity, in the form of a bulbous spouted lidless jug, mark of a dragon in a shield to rim struck twice and with other verification stamps, 9cm., 3½in; **and an Irish lidless baluster measure**, the rim struck with a recorded false verification mark

for the Irish measure see Pewter Society journal vol 11, No 4 Irish Haystacks by David Hall for details of false marks
£100-150
- 518 A porringer circa 1685**
with a single ear of 'Old English' pattern and gutter and boss in base with rounded sides, ownership initials M R to handle and touch of I S and a lion mark under handle (Peal M.P.M. 5936e and addenda) 12cm., 4 7/8in diameter excluding handles

Ex Sutherland Graham collection. For similar see the Worshipful company catalogue of pewterware 1968 fig 37 (No.387)
£400-600
Illustrated p53
- 519 A footed strawberry or sweetmeat dish circa 1750**
with a twelve petal lobed rim on a waisted socle and domed foot 10cm., 4in diameter; 5cm., 2in high

Ex Christopher Peal collection. Sotheby's 6th October 1981 lot 28 for similar see Peter Hornsby's *Pewter of the Western World* fig. 373 p. 138
£500-800
Illustrated p49
- 520 A group of four pewter peppers circa 1800-30**
of baluster or urn form the largest 13.5cm., 5½in
£150-200
- 521 A large cup salt 18th century**
with reeded rim and reeded foot 8.5cm., 3¼in diameter
£100-150
- 522 Two small cup salts early to mid 18th century**
one with reeded rim the other a broad lip
largets 7cm., 2¾in diam
£180-220
- 523 A treasury type inkwell early 19th century**
rectangular with double hinged flap, one side revealing twin wells, on ball feet 20cm., 8in wide

for similar see Peter Hornsby's *Pewter of the Western World* fig.1175, p.340
£150-200
- 524 A lidded inkwell circa 1800**
square with hinged domed cover and two drawers below on a plinth base 10cm., 4in

for similar see Peter Hornsby's *Pewter of the Western World*, fig.1172, p.339
£150-250

Other properties
- 525 A pewter plate or saucer English, 15th century**
with a broad border and raised edge rim, the centre with a raised boss, Lombardic lettering ownership initials H A stamped on border and touch of two letters, possibly A C flanking a linear motif with crown finial all within a beaded circle to reverse, areas of 'nature's gilding' 17.7cm., 7in

comparative literature:
'Pewter, a handbook of selected Tudor and Stuart pieces', page 14 for two similar plates catalogued as early 15th century

'Pewter, A celebration of the craft, 1200-1700', page 57 fig 28 catalogued as circa 1500

Sotheby's Billingshurst 17th March 1998 lot 340 and Phillips, Chester 'Sandy Law' collection, September 1997 lots 111 and 376
£2,000-2,500
Illustrated p53
- 526 A pewter plate or saucer English, 15th/16th century**
with a broad rim with thickened edge rim to underside and raised central boss, no apparent touch, a primitive scratched five point star to the reverse, areas of nature's gilding' 17.5cm., 6 7/8in

see footnote to previous lot. In proportion, this plate is similar to one sold in these rooms November 1998 lot 452 catalogued as late 15th/early 16th century, however the one in November had the addition of lathe ring turning.
£1,500-2,000
Illustrated p53
- 527 A pewter plate or saucer English, late 15th/16th century**
the rim with a thickened edge to the underside and with a raised boss, a stamped mark in a circle of a crescent shaped chalice ? to front rim, some 'nature's gilding', hole to centre 16cm., 6¼in
£400-600
Illustrated p53
- 528 A pewter plate by Samuel Duncumb 18th century**
23cm., 9in; **a Continental trefid end spoon**, early 18th century, 18cm., 7in; **and a spiral twist iron candlestick** on a wooden base, circa 1800, 20cm., 8in (3)
£150-200
- 529 A triple reeded rim charger Richard Smith of London, circa 1690**
hallmarks and ownership triad to rim, rose and crown mark to reverse 51cm., 20in
£400-600
- 530 A triple reeded rim dish George Smith of London, circa 1690**
hallmarks and ownership initials to rim and touch adverso 42cm., 16½in
£200-300

- 531 **A pair of triple reeded rim dishes**
John French circa 1690
 with hallmarks to rim and crowned rose adverso
 38cm., 14 7/8in
 £550-700
- 532 **Four pewter plates**
English 18th/19th century
 including a wavy edged plate by Joseph Spackman of London, 25cm., 9 3/4in; and three with plain or single rims by Yates & Birch, John Harris of York and Allen Bright of Bristol
 £250-350
- 533 **A set of four plates**
William Bartlett, circa 1750
 with single reeded rim and touch and hallmarks adverso (O.P.279)
 22cm., 8 3/4in
 £200-300
- 534 **A broad rim plate**
by the maker I.W. circa 1660
 the 2inch rim with raised edge and a row of hallmarks
 25.5cm., 10 1/8in
 Ex Isher, sale, lot 139 (sold as a pair) Bruton Knowles, 27th April 1976
 £800-1,000
Illustrated p49
- 535 **A collection of four tavern mugs 19th century**
 comprising a quart by James Yates, a pint engraved '101 Royal Bengal Fusiliers' a George IV pint, all straight sided tapering, and a half-pint by C. Bentley
 £120-180
- 536 **A quart measure**
Thomas Leatherbarrow of Liverpool, circa 1830
 of straight sided tapering form with a raised girdle, and an Irish haystack measure of half pint capacity of usual form (2)
 £180-220
- 537 **A collection of four pewter tavern mugs**
 comprising a straight sided quart by Nathaniel Barber circa 1780 with WR verification, a quart by Bolton & Wild of Wigan, circa 1830, and two half pints by Birch and Abel Grove respectively
 £150-200
- 538 **A rococo salt**
Continental circa 1770
 of swirled form, angel mark under base, 6cm., 2 1/2in; and a **Britannia metal cream jug**, circa 1820 (2)
 £100-150
- 539 **A Puritan spoon**
circa 1650
 8.5cm., 7 1/2in
 £80-120
- 540 **A pair of pewter ejector candlesticks**
circa 1830
 each with baluster stem and domed circular base
 24cm., 9 1/2in
 £120-180
- 541 **Two Scottish baluster lidded measures**
circa 1840
 comprising a half pint Edinburgh measure and a gill Glasgow measure each with domed cover with cast Imperial seals to centre and embryo shell thumbpiece
 £150-200
- 542 **A single reeded rim dish**
William Smith of York or Leeds, circa 1730
 ownership triad to front and touch and hallmarks adverso, some corrosion
 42cm., 16 1/2in
 £150-250
- 543 **A pewter plate**
English 15th/16th century
 with broad rim and thickened edge rim to underside, traces of 'nature's gilding'
 21cm., 8in
 excavated at Waveney, near Bungay, Suffolk
 £2,000-2,500
Illustrated p53
- 544 **A saucer or patten**
English, probably 16th century
 with a raised curved base and flared rim with thickened edge
 10cm., 4in
 excavated at Walsingham, Norfolk
 £400-600
Illustrated p53
- 545 **A trifold spoon**
Dutch, circa 1680
 with rat tail to bowl join, touch of a bird, 'nature's gilding'
 17cm., 6 3/4in
 £200-300
- 546 **A holy water bucket**
probably Continental, late 17th/early 18th century
 the tapering body with bucket shaped rim and swing handle hooked into shell cast mounts, decorated with wriggle-work engraving with a heart floral vines and the initials I H S
 18cm., 7in
 £400-600
Illustrated p53
- 547 **A pewter pilgrim flask**
perhaps Romano-British
 with a moulded seam and ring turned decoration to flat sides with central spout and one suspension loop, one large patch and some corrosion
 13cm., 5in
 £200-300
- 548 **Two pairs of Britannia Metal communion flagons**
Scottish mid 19th century
 each with a tapering body with a raised girdle and stepped domed foot, with front spout, domed cover and scroll handle, 32cm., 12 1/2in
 £200-300

- 549 A triple reeded rim dish probably French, circa 1700**
the rim stamped with fleur-de-lys and rosettes, worn touch to reverse, *corroded*
42cm., 16½in
£150-200
- 550 An oval hot water dish Thomas Alderson of London, circa 1820**
with gravy depression at one end behind a gallery, baluster side handles, touch to reverse
56cm., 22in across handles
£200-300
- 551 A broad rimmed dish John Cave of Bristol, circa 1680**
with hallmarks and two pairs of ownership initials to rim
42cm., 16½in
£350-450
- 552 A Saxon domed lid tankard circa 1750**
the drum wriggled-work engraved with an armorial between mantling, the domed cover engraved 'No 4 JCS' ball thumbpiece
22cm., 8¾in
£300-400
Illustrated p49
- 553 A lidded tankard Georg Christoph Kalb, circa 1830**
with ring turned tapering body, domed cover and ball thumbpiece (Hintze 541-42)
17cm., 6¾in
£200-300
Illustrated p49
- 554 A South German barrel shaped tankard probably Johann Christoph Meyer of Altenberg, circa 1750**
with bands of girdling and a band of five engraved portraits, the cover with an armorial dated 1767, (Hintze 1617-18) and a lidded pear shaped measure (2)
15cm., 6in
£250-350
Illustrated p49
- 555 A collection of pot bellied lidless baluster measures 19th century**
of assorted capacities, and a half pint tavern mug (21)
£150-250
- 556 A set of four quart tavern mugs John Warne of London, circa 1840**
with tapering straight sided bodies and Victorian verification stamps, each inscribed 'Rose & Crown, Sittingbourne' and a set of three quart spouted tavern mugs with side handles and Victorian verification stamps (7)
£250-350
- 557 Five assorted brass rimmed pewter tavern measures mid 19th century**
including a set of three graduated from quart down, and two further
£150-250
- 558 A set of ten pint capacity spouted tavern mugs Loftus of London, circa 1880**
each with tuck-in foot and loop side handle, and a Victorian three handled rowing trophy mug from Clare college, Cambridge (11)
£150-250
- 559 A pewter bowl French, early 19th century**
with twin carrying handles and a reeded lobed rim, *rim stamped 'MGV' and 'FGV'*
33cm., 13in diam.
£100-150
- 560 A pair of pewter ice cream moulds Victorian, circa 1890**
each in sections with tapering fluted body and fruit cast top, 18cm., 7in; and two further pewter sectional moulds (4)
£200-300
- 561 Miscellaneous pewter**
comprising a pair of Continental pricket candlesticks of eighteenth century design, 42cm., 16½in; two French embossed pewter dishes, one oval and one circular, and two single reeded rim dishes, early 18th century, *poor condition* (5)
£150-200
- 562 A pewter lidded tankard English 18th century**
the tapering body with a single raised girdle and domed cover, *damages*, 15cm., 6cm; a German lidded flagon, circa 1800, and a Flemish pear shaped lidded flagon (3)
£180-220
- 563 An wriggled-work two handled bowl Dutch 18th century**
with engraved scene of an altar with candelabra and a canopy within leaf pattern border
32cm., 12½in diam
£200-300
- 564 A pair of pewter tureens and covers German, late 19th century**
each of lobed circular form with twin handles
24cm., 9½in. diam. (2)
£150-250
- 565 A hexagon knopped pewter spoon 16th century**
touch of the maker H.M. in a shield to bowl
16cm., 6¼in. diam. (2)
£200-300
- 566 Three Dutch pewter spoons 17th century**
comprising two slip tops by the maker H.K. and a Puritan type also with makers touch in bowl
the largest 18.5cm., 7¼in
£200-300