

EWM

Decorative Arts, Ceramics, Glass and Oriental Works of Art

11 am Wednesday 13th October 1999 (Sale No: C1649)

Works of Art, Furniture, Barometers and Scientific Instruments and Clocks

11 am Friday 15th October 1999 (Sale No: C1651)

Pewter

2.30 pm Friday 15th October 1999 (Sale No: C1651)

New House, 150 Christleton Road, Chester CH3 5TD

Phillips on the Internet: www.phillips-auctions.com

Catalogue price: £6.00 (£7.00 by post)



FOUNDED 1796

Front Cover Illustration: Lot 1095 Back Cover Illustration: Lots 5, 18, 25, 34, 54 and 55

On View

Sunday 10th October 1999 10 am-1 pm
Monday 11th October 1999 10 am-4 pm
Tuesday 12th October 1999 10 am-4 pm
Wednesday 13th October 1999 10 am-4 pm
Thursday 14th October 1999 10 am-4 pm
Friday 15th October 1999 9 am-10.45 am

Specialists

Tel: (01244) 313936
Alexander Clement (Ceramics and Glass)
Hilary Moss (Oriental Ceramics and Works of Art)
Antony Bennett (Clocks, Barometers and Scientific Instruments)
David Houlston, Hilary Moss (Furniture and Works of Art)

Reserves and Commission Bids

Tel: (01244) 313936
Fax: (01244) 340028

Phillips Son and Neale Limited

Chief Executive
Christopher Thomson

International Executive Director
Dan Klein

UK Regional Executive Director
Tony Barry

Finance Director
Julie Goldstein

Marketing Director
Kathleen Kuys

New House
150 Christleton Road
Chester CH3 5TD
Tel: 01244 313936
Fax: 01244 340028

Members of the Society  of Fine Art Auctioneers



INVESTOR IN PEOPLE



00005122

European and Oriental Ceramics,
Glass and Works of Art
Oak and Country Furniture,
Clocks and Barometers
Pewter



FOUNDED 1796

Wednesday 13th and Friday 15th October 1999 at 11 am each day
New House, 150 Christleton Road, Chester



Pewter

Day 2: 2.30 pm Friday 15th October 1999

New House, 150 Christleton Road, Chester CH3 5TD



Sale No: C1651

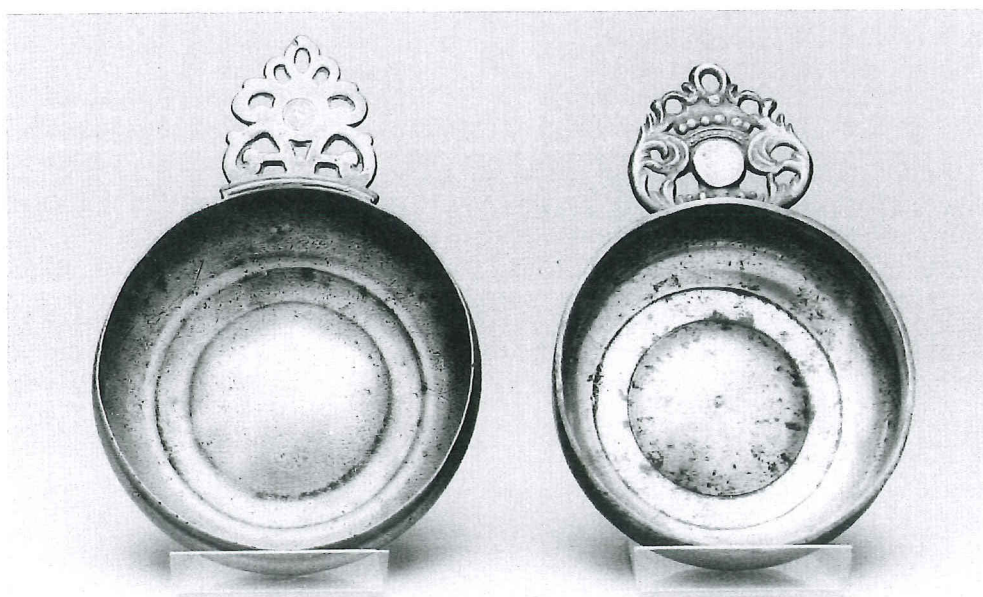
Specialist:

Tel: (01244) 313936

David Houlston

PEWTER

- 961 **An 18th Century Continental single reeded dish**, with later punch decoration, diameter 17½ inch, 44.5cm £150-250
- 962 **A pair of early 18th century plain rim chargers**, each with armorial device to rim, diameter 20 inch, 51cm (2) £250-300
- 963 **A Scottish Tappit Hen**, of typical form, height 27cm £80-100
- 964 **An early 18th century plain rim charger**, touchmark of John Carpenter (Cott 810) to rear of rim, diameter 22 inch, 56cm £300-400
- 965 **A group of 19th century mugs**, of bulbous and straight sided form, each with brass collar, quart to quarter gill capacity (9) £50-80
- 966 **A Scottish Tappit Hen**, of typical form, crown X mark to rim, height 28cm £80-100
- 967 **An English porringer, circa 1700**, the 'booged' bowl with well, single 'coronet' ear and indistinct touchmark on boss, bowl diameter 11cm
**
* Previously sold Phillips, Sandy Law Collection, 25th September '97, lot 36
See illustration £300-400
- 968 **An English porringer, circa 1700**, the 'booged' bowl with bossed well and unusual lug with touchmark of Adam Bancks of Milngate, (Chester) (Cott 222A), diameter 12cm
See illustration £500-700



Lots 968 and 967



Lots 976, 977 and 975

- 969 **An early 18th century single reeded plate**, ownership initials I.S. and touchmark of Richard Grunwin (Cott 2040) to rear, diameter $9\frac{3}{8}$ inch, 24cm, together with a single reeded continental plate, touchmarks of Michell to rear, diameter, 28cm (2) £40-60
- 970 **A pair of unusual size plain rim plates, circa 1760**, each with touchmark of Thomas Compton (Cott 1063) and crowned X to rear, diameter $7\frac{1}{4}$ inch, 18.5cm (2) £50-70
- 971 **A plain rim dish, circa 1750**, touchmark of Samuel Spateman (Cott 4448) to rear of rim and ownership triad $\begin{smallmatrix} H \\ S \\ T \end{smallmatrix}$, diameter $16\frac{1}{2}$ inch, 42cm £100-150
- 972 **A late 18th century single reeded dish**, with deep gentle booge and incised ring around boss, touchmarks of William Cooke, Bristol and Gloucester (Cott 1095) to rear, diameter $14\frac{1}{2}$ inch, 37cm £150-200
- 973 **A single reeded dish, circa 1740**, with deep gentle booge, touchmark of Stephen Cox, Bristol (Cott 1189) and ownership initial W & W to rear, old catalogue description pasted to rear, $16\frac{1}{2}$ inch, 42cm £250-350
- 974 **A pair of 18th century plain rim plates**, each with armorial device to rim and 'wriggle-work' flower to well, indistinct touchmarks to rear, $9\frac{3}{4}$ inch, 25cm (2) £50-80
- 975 **A lidless baluster measure, circa 1780**, with plain body and single curve handle with flush terminal, half pint capacity, height 12cm
See illustration £60-80
- 976 **A late 18th century harvester measure of gill capacity**, with flat collar and single curve handle, mark of Fothergill & Sons, Bristol to base, height 8cm, together with a half gill, example 6.8cm (2)
See illustration £100-150



Lots 983, 985 and 984



Lot 978

977 **A 19th century Edinburgh lidded bulbous measure**, with shell thumbpiece, of gill capacity, height 10cm, together with a Irish handleless Imperial measure, circa 1840 with slender baluster body of gill capacity, marked Gaskell & Chamber, Birmingham, height 9cm (2)

See illustration

£60-80

978 **A set of six early 18th century single reeded plates**, each with incised ownership initials C.M. and unidentified London touchmarks to rear, $9\frac{3}{8}$ inch, 24cm (6)

See illustration

£800-1000

979 **A 19th century continental bowl**, with deep booge and incised lines and wriggle-worked initial W.F.K. to rim, three touchmarks of 'PETER DECKER ENGLISCH. ZINN' to rear, diameter $13\frac{3}{8}$ inch, 34cm

£80-120

980 **A Scottish single reeded bowl, circa 1800**, narrow rim and deep gentle booge and incised line around well bearing mark of Stephen Maxwell to centre (Cott 3153) diameter $9\frac{3}{4}$ inch, 25cm

£150-200

981 **A single reeded dish, circa 1740**, ownership triad $F^I M$, hallmarks and touchmarks of John Langford (Cott 2823) to rear, diameter $16\frac{3}{4}$ inch, 42.5cm

£80-120

982 **A single reeded dish, circa 1750**, touchmark of A. Carter (Cott 825) to rear, diameter $16\frac{3}{4}$ inch, 42.5cm

£80-120

983 **A barrel shaped mug, circa 1860**, with four fillet bands, double curved handle, height 11cm

See illustration

£50-70

984 **A pair of barrel shaped ale jugs** each with bulbous body with high single fillet, the spout with grating and overlap handle, quart capacity, bearing touchmark of Lawrence Tates (Cott 5342) to underside, height 16cm (2)

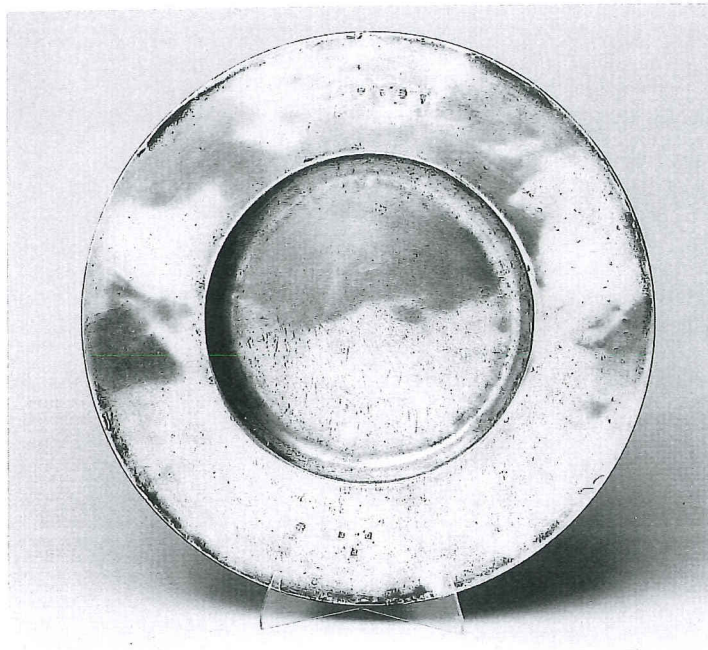
See illustration

£200-250

985 **An early 19th century lidded ale jug**, of baluster form with dome lid, solid shaped thumbpiece and scroll-lapped handle, quart capacity, height 19cm

See illustration

£70-100



Lot 986

986 **A broad rim charger, circa 1670**, the plain rim with hallmarks and ownership triad D^{P} , touch of R.I. possibly Robert Jones (Cott 5730, LTP27) to rear of rim, diameter $17\frac{3}{4}$ inch, 45cm, rim diameter $3\frac{3}{4}$ inch, 9.5cm (42%)

**
* Ex. Shelley Collection

See illustration

£600-800

987 **A Normandy lidded measure** of shouldered form with bands of incised lines, heart shaped lid and twin acorn thumbpiece, ownership initials C.B. to lid, together with another similar, height 22cm (2)

£100-150

988 **A Victorian Chalice** by James Dixon & Sons, with ring turned stem on domed foot, height 18cm, and another, height 21cm (2)

£60-80

989 **An O.E.W.S. pint bud baluster measure**, two bands of incised lines to lid, plain body, height 16cm

See illustration

£70-100

990 **A baluster lidded Pre-Imperial measure**, the flat lid with embryo shell thumbpiece above a body with two bands of incised lines, Dean of Guild mark $\frac{\text{C}}{\text{W}} \frac{\text{D}}{\text{E}}$ to rim, height 12cm

See illustration

£100-120

991 **A lidless baluster measure, circa 1800**, O.E.W.S quart, plain body, engraved 'Denbigh', single curve handle, together with a matching O.E.W.S. pint example (2)

See illustration

£250-300

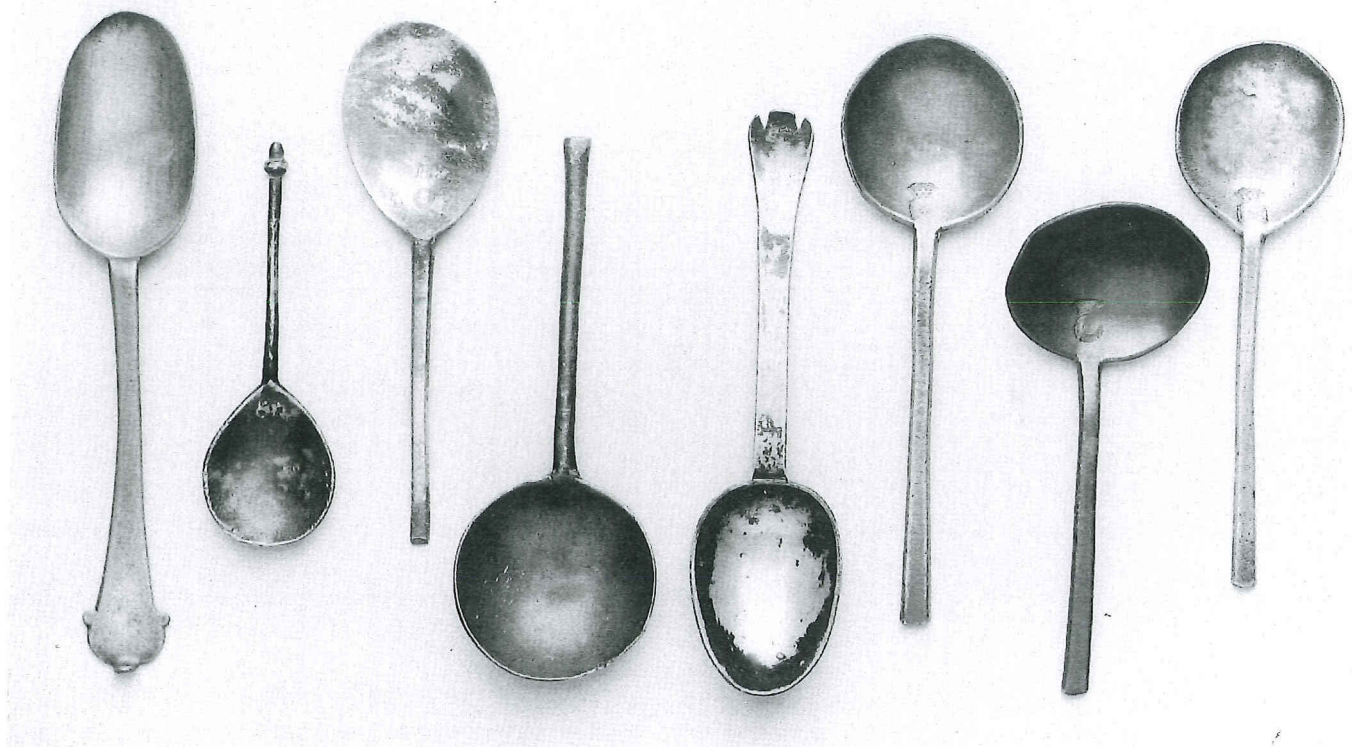


Lots 991, 989 and 990



Lots 995, 994 and 1008

- 992 **A late 19th century wine taster**, with scallop-shell handle and X mark to well, diameter 8cm, together with a pap boat, stamped DENT length 13.5cm (2) £30-50
- 993 **A continental punch decorated saucer**, with slightly upturned edge, touchmarks 'blockzinn' to rear, diameter 13cm £50-100
- 994 **A late 18th century Scottish spouted flagon**, with circular fillet to lid, twin cusp thumbpiece, tapering body with mid fillets, curved handle with diamond attachment, engraved 'Associate con. Bothwell' to upper body, touchmark of Graham and Wardrop to base, handwritten label 'from Newarthill Church' to underside, height 26cm
See illustration £400-600
- 995 **A late 18th century Continental flagon**, the bottle shaped body with twin fillets, domed lid, shell thumbpiece and single curve handle, touchmark to underside of base, height 33cm
See illustration £200-300
- 996 **A late 18th century Normandy lidded measure**, of shouldered form, with heart shaped lid and twin acorn thumbpiece, bands of incised lines to body, height 23.5cm £100-150
- 997 **An early 18th century plain rim dish**, with dragon armorial to rim, diameter 16½ inch, 42cm £80-120



Lots 999, 1002, 1003, 1001 and 1000

- 998 **An embossed plate**, decorated with armorial device, maker's initials N.L. and date stamp 1701 to rear of rim, diameter $9\frac{1}{2}$ inch, 24cm
£80-100
- 999 **A set of six trifold variant spoons, circa 1760**, each with makers mark *L' heart below stylised flowers*, to rear of stem, length 20cm (6)
See illustration £400-600
- 1000 **Two 17th century Dutch slip top spoons**, each with round bowl on a slender hexagonal stem, length 19 & 17.5cm, marker's mark 'H.K.' to bowl and another similar, length 16cm (3)
See illustration £90-120
- 1001 **A 18th century Dutch Trifold spoon**, touchmark of L.E. and winged angel to back of handle, length 18cm, together with a Dutch spoon with large round bowl and plain slender stem, length 17cm (2)
See illustration £120-180
- 1002 **A small 15th/16th century acorn knob spoon**, the fig shaped bowl on hexagonal stem with acorn knob, makers mark *Flower* to bowl, length 12.5cm
See illustration £150-200
- 1003 **A 16th/17th century English slip-top spoon**, the fig shaped bowl on slender hexagonal stem, unidentified maker's mark and ownership triad $\frac{H}{T}$ to bowl, length 16.5cm
See illustration £80-100
- 1004 **An 18th century Continental measure**, probably Dutch, a domed lid and shouldered, bulbous body with incised rings, solid thumbpiece and simple single curve handle, height 25.5cm
£100-150
- 1005 **A Collection of Cup Salts circa 1800 and later**, each on shallow domed foot, diameter 8.5cm to 6cm (7)
£70-100
- 1006 **A Pair of Early 19th Century Plain Rim Plates**, crown X to rear, $9\frac{3}{4}$ inch, 24.5cm, one with later stamped decoration to rim (2) £50-80
- 1007 **An Early 19th Century Plain Rim Plate**, crown X and London mark to rear, diameter 9 inch, 23cm, another similar and a pair of early 19th century cup salts (4)
£50-80
- 1008 **A Scottish lidded tappit hen, circa 1800**, of typical form, Scottish pint capacity, height 26.5cm
See illustration on page 105 £300-400



Lots 1016 and 1090

- 1009 **A pair of early 18th century plain rim plates**, each with crowned triad $E^L M$ to front of rim and touchmark and hallmark of Edmund Harvey (Cott 2185) to rear, diameter 22.5cm (2) £80-100
- 1010 **An 18th century single reeded continental plate** with ownership initial D.B. and maker's mark I.B. to rim, diameter 22.5cm, together with a continental wavy edged plate, diameter 24cm (2) £40-60
- 1011 **A plain rim plate circa 1810**, with Armorial device to rim and touchmarks of Hall and Scott (Cott 2089) to rear, diameter 24.5cm, together with an 18th century plain rim plate, with crowned triad $I^L M$ to rim (2) £40-60
- 1012 **A pair of late 17th Century style triple reeded plates**, each with touchmark of Thomas Compton (Cott 1063) to rear diameter $9\frac{3}{4}$ inch, 24.5cm (2) £40-60
- 1013 **A pair of late 18th Century single reed dishes**, each with touchmark of Thomas Alderson, London (Cott 40) to rear, diameter 25cm, together with a pair of plain rim plates 22.5cm (4) £40-60
- 1014 **A plain rim dish circa 1730**, touch and hallmarks of Samuel Smith (Cott 4379) to rear diameter 23cm, and a pair of mid 18th Century plain rim plates, touchmark and hallmarks of Bouchier and Richard Cleave (Cott 963) and ownership triad $R^P S$ diameter 25cm (3) £40-60
- 1015 **An early 18th century single reeded plate**, ownership initials L.B. on rim and touchmark of Leonard Terry, York (Cott 4696) diameter 15 inch, 38cm £80-120
- 1016 **A James I Flagon, circa 1610**, the tapering cylindrical body with ovolo moulded foot, knopped 'bun' cover with twin triple incised bands and ridged erect thumbpiece, maker's mark C.N. (Cott. 5809) to underside of base, height 36cm
 ** Ex. Hopcraft Collection £2000-3000
 * See illustration
- 1017 **An early 18th century single reeded dish**, touchmarks of Edward Leapidge, (Cott 2894), London to reverse, diameter 18 inch, 46cm £150-200

- 1018 **An early 18th century single reeded charger**, ownership triad I^P_E to rim, diameter 18 inch, 46cm, another with hallmark of John Shorey (Cott 4263) to rim with ownership triad M^R_M (both A.F.) (2) £80-100
- 1019 **An early 18th century single reeded charger**, ownership triad R^I_1 to rim, diameter 18 inch, 46cm, together with an 18th century single reeded plate, ownership initials R.R. to rim, diameter $16\frac{1}{2}$ inch, 42cm (2) £70-100
- 1020 **An 18th century plain rim plate**, ownership triad I^T_N and indistinct touchmarks to reverse, diameter $16\frac{2}{3}$ inch, 41.8cm, another similar diameter $15\frac{3}{4}$ inch, 40cm (a.f.) and a single reeded example, diameter 15 inch, 38cm (3) £70-100
- 1021 **An 18th century plain rim plate**, ownership initials A.N. to rim, 15 inch, 38cm diameter, a single reeded plate ownership initials E.R. to rim $12\frac{1}{4}$ inch, 31cm, and a plain rim example, diameter 15 inch, 38cm (3) £80-100
- 1022 **An 18th century oval meat plate**, the plain rim with crowned armorial device, crowned X marks to reverse, $23\frac{3}{4}$ inch, 60.5cm x $18\frac{1}{2}$ inch, 47cm £100-200
- 1023 **An 18th century deep bowl**, with narrow single reeded rim, diameter 27.5cm £150-200
- 1024 **A Scottish mid 18th century plate warmer**, with touchmark of William Hunter, Edinburgh (Cott 2473) to reverse and a composite example by the same maker (2) £180-250
- 1025 **A single reeded plate**, marked Birch Villier, diameter $9\frac{3}{4}$ inch, another marked Bush & Perkins, together with a truncated Quart mug and a pint example (7) £100-120
- 1026 **An 18th century Continental single reeded plate**, touchmarks to reverse, $9\frac{3}{8}$ inch, 23.8cm, together with a similar example (2) £40-60
- 1027 **A pair of 18th century Continental single reeded dishes**, each with maker's touch to rim, $13\frac{1}{4}$ inch, 33.5cm diameter, a single reeded example with crowned rose to reverse, 13 inch, 33cm diameter, an example with multi incised lines to rim 12 inch, 30.5cm diameter (4) £100-150
- 1028 **Six various 18th century plain rim plates**, including an example by Edward Leapidge, London (Cott 2894) mostly 9 inch, 23cm diameter (6) £80-120
- 1029 **A pair of late 18th century plain rim plates**, each marked Stynt Duncombe, to reverse, $9\frac{3}{4}$ inch, 25cm, together with a near pair marked London (4) £60-80
- 1030 **A late 18th century pewter bedpan**, with turned pewter handle, touchmark of Stynt Duncomb (Cott 1466), diameter 32cm £140-180
- 1031 **A pair of late 18th century plain rim chargers**, each with hallmarks, indistinct touch and ownership triad w^J_P to reverse 18 inch, 46cm (2) £250-300
- 1032 **A set of six 19th century footed beakers**, each with flared bowl on short reeded foot, maker's mark to side of bowl, height 10cm (6) £70-100
- 1033 **A set of six late 19th century bowls**, each with flared rim on gentle body with broad foot, diameter 13.5cm (6) £70-100
- 1034 **A Scottish Tappit Hen**, of typical form, height 27cm £80-100
- 1035 **A Normandy lidded measure of typical shouldered form**, with heart shaped lid and twin acorn thumbpiece, height 23cm £40-60
- 1036 **A 19th century tulip shaped quart mug**, by Bolton and Wild, Wigan, with mid fillet and double curve handle together with a flared bottom pint mug, a straight sided half pint example and a bulbous gill, half gill and three quarter gill measures (8) £70-100
- 1037 **A set of five Irish haystack measures**, quart to half pint imperial capacity, marks of Joseph Austen, Cork to bases (Cott 153) psuedo verification marks to rim neck (5) £100-120
- 1038 **Three 19th century copper collared straight sided reeded mugs**, quart, pint and half pint, numerous verification marks to rim (3) £50-70
- 1039 **A set of four 18th century plain rim plates**, indistinct hallmarks and touchmarks to reverse $9\frac{1}{8}$ inch, 23.3cm (4) £40-60
- 1040 **A pair of late 18th century single reeded plates**, each with touchmark of William Cook(e) Bristol and Gloucester (Cott 1095) and incised ownership initials I^W_A to reverse, diameter $8\frac{1}{2}$ inch, 21.5cm (2) £40-60



Lot 1047

- 1041 **A mid 18th century plain rim plate**, touchmark of John Jupe, London (Cott 2693) and ownership triad $\overset{K}{F} \overset{E}{B}$ to reverse, $9\frac{3}{8}$ inch, 24cm, another mid 18th century plain rim plate marked John Townsend (Cott 4795) $9\frac{1}{2}$ inch, 24cm and two other plain rim plates (4) £40-60
- 1042 **An 18th century Dutch pewter beaker**, of flared form raised on gadrooned collet foot, with wrigglework decorated bowl of exotic birds and foliage above a scrolling border, height 11.5cm £100-150
- 1043 **An early 18th century single reeded dish**, with touchmark of Stephen Bridges (Cott 572) to reverse, diameter $9\frac{3}{8}$ inch, 24.5cm, a 19th century single reeded dish by Jones Yates, Birmingham, together with a continental single reeded plate, a wavy edge example and an embossed example (5) £40-60
- 1044 **A mid 18th century single reeded dish**, unidentified touchmark to rear, $13\frac{3}{4}$ inch, 35cm, five 18th century plain rim plates, mostly 9 inch diameter, four single reeded plates, an early 20th century triple reeded plate, an early 18th century plain rim dish, $9\frac{3}{4}$ inch, 24cm diameter, another $11\frac{5}{8}$ inch, 29.5cm example and two dish lids (15) £80-120
- 1045 **A mid 18th century plain rim dish**, touchmark of James Bullock (Cott 685) to rear $13\frac{1}{2}$ inch, 34.5cm, a late 18th century plain rim plate with touchmark of Duncomb (Cott 5725) to back $9\frac{1}{2}$ inch, 24cm, an early 18th century plain rim plate, touchmark of Richard Johnson, Ludlow (M.P.M. 2634) to rear 22.5cm, a continental dish, 10 inch, 25cm and an early 19th century plate warmer with touchmark of Compton, London (Cott 1063) to rear, diameter $9\frac{3}{8}$ inch, 24cm (5) £50-80
- 1046 **An early 19th century Britannia metal coffee pot by J. Dixon & Son**, a squat spherical bachelor teapot, a 19th century continental water jug with lapet decoration and mask spout, and a continental small pear-shaped lidded example (4) £50-70
- 1047 **A Wrigglework flat lidded tankard, circa 1690**, the body and lid decorated with stylised flowers, lid with denticulations, swan neck handle with vine decoration, double scroll terminal and double C thumbpiece, indistinct maker's mark in base, height 18cm
 ** Ex Hopcraft Collection
 * See illustration £4000-6000



Lots 1058, 1057, 1060 and 1059

- 1048 **A late 19th century spouted quart mug** of straight sided reeded form, another, both with engraved inscriptions, a concave quart spouted mug and pint tulip shaped example, and one quart, pint and four half pint 19th century straight sided reeded mugs with brass collars and a half pint and quarter gill bulbous example (10) £70-100
- 1049 **A group of 19th century bulbous measures** from quart to quarter gill (24) £40-60
- 1050 **A group of measures**, mostly straight sided, including two footed cups and two beakers (35) £60-80
- 1051 **An 18th century continental oval wavy edge plate**, touchmarks to reverse, diameter 16 inch, 40.5cm, a 19th century chamber pot, two early 19th century standishes of rectangular form, two 19th century funnels, a capstan ink pot and a relief cast flat-back model of a horse (8) £60-80
- 1052 **A 19th century continental dish**, with single reeded rim deep body and raised well touchmarks to base, 13 $\frac{3}{4}$ inch, 35cm, together with a 19th century continental dish with wrigglework scene to well depicting a mill by a river, dated 1823 to rim, touchmarks to reverse, 12 $\frac{3}{4}$ inch, 32.5cm (2) £80-100
- 1053 **A spouted flagon circa 1830**, by Yates, Birch & Spooner, the tapering U-shaped multi-reebed drum with domed lid, solid shaped thumbpiece, double curved handle, touchmark to rim, height 24cm, together with three tulip measures, a concave sided pint measure and two beakers (7) £50-80
- 1054 **A 19th century French straight sided lidded litre measure**, of typical form with heart shaped lid, numerous verification letters to rim, height 21cm, a lidless demi-litre example, another and a deci-litre, together with a European flagon with straight sided plain body, the stepped flat lid engraved with monogram and date 1830, touchmark to base, height 22cm (5) £100-150
- 1055 **A 19th century oil lamp**, another small example, a continental sauce pan with lip, two engraved snuff boxes, a pepperette in the form of an owl, several spirit measures, two salts and three commemorative items and other small decorative items (34) £50-80
- 1056 **A collection of nine 18th/19th century plate warmer**, including two pairs, with touchmarks to rear (9) £100-150
- 1057 **A quart tulip lidded tankard, circa 1830**, the filleted drum and lid with open chair-back thumbpiece, double curve handle, marked "T.W" to base, height 19.5cm
See illustration £100-150
- 1058 **A pair of 19th century Continental candlesticks**, probably French, each of round-based form with gently tapering stem and stiff-leaf borders, marked 'M.B. Compastilion' to underside, height 19cm (2)
See illustration £80-120
- 1059 **A Mid 17th century cup**, the beaker-shaped body with simple single-curve handle, touchmark of W.C. over a bull in a beaded circle to base, extensive nature's gilding, height 6.2cm
See illustration £200-300



Lots 1066, 1067, 1070, 1069 and 1068

- 1060 **A 19th century quart concave-sided lidded tankard**, marked Yates & Birch, with stepped domed lid open chair back thumbpiece and single curve handle, height 21cm
See illustration £150-200
- 1061 **An early 19th century pint tulip measure**, with double curve handle, touch of 'Morgan' in base, with Liverpool verification marks, together with a concave pint measure engraved 'The Curiosity Vaults', touch of Thomas Holgate, Liverpool, in base (2) £80-100
- 1062 **An 18th century single reeded dish**, diameter 15 inch, 38cm, a pair of mid 18th century plain rim plates with touchmark of Henry Little (Cott 2948) to reverse, diameter 8 $\frac{3}{4}$ inch, 22.3cm, a Romano British style dish and a 19th century dish, raised on three paw feet (5) £120-180
- 1063 **A Scottish Tappit Hen**, of typical form, hallmarks to base, height 28cm £70-100
- 1064 **Three 19th century Britannia metal coffee pots**, an ice mould, two pint and two half pint staight sided measures and one tulip pint example (9) £50-80
- 1065 **A set of early 20th century plain rim plates**, including six 10 inch diameter, twelve 8 inch, four 7 inch, and six 6 inch examples (28) £50-80
- 1066 **A rare Scottish lidded potbelly measure**, circa 1700, half mutchkin, domed lid with erect thumbpiece, plouk on inside of squat body, ownership initials 1 MK: HS to body and incised inscription 'Inverness 1906' to base, capacity to plouk 7 $\frac{1}{2}$ fl. oz., height 12.7cm
**
*
Ex Frank Holt Collection
See illustration £500-800
- 1067 **A Scottish tappit hen**, circa 1826, of typical form, multi-incised to slender body and engraved A.A. above leaf foliage sprays, the domed lid bearing imperial medallion dated 1826, verification marks to neck, imperial pint capacity, height 20cm
See illustration £400-600
- 1068 **A Glasgow double domed bulbous measure**, circa 1830, with embryo shell thumbpiece, bearing crown imperial mark on lid, half pint capacity, mark to neck, height 13cm
See illustration £300-400
- 1069 **An 18th century dome lidded tankard**, with filleted tulip shaped body and lid, chair back thumbpiece and single curve handle with hooded ball terminal, touch in base of William Eddon (Cott 1503), and hall marks to rim, height 20cm
See illustration £400-600
- 1070 **An 18th century lidded ale jug**, with bulbous filleted body and domed lid with upright plume thumbpiece, overlap handle, spout with grating, touchmark of John Sedwick, York, to under base, height 20cm
See illustration £300-400

- 1071 **A set of six single reeded dishes**, each with ownership initials E.M. to rim, indistinct touchmarks to rear, diameter $16\frac{2}{8}$ inch, 42cm (6) £150-200
- 1072 **A set of eight plain rim plates**, each with ownership initials E.M. to rear, diameter 9 inch, 23cm hallmarks of Bush & Perkins to rear, 9 inch, 23cm diameter (8) £60-80
- 1073 **An Irish haystack measure**, pint capacity £30-40
- 1074 **A pair of 18th century style plain rim plates**, touchmarks of William Wright to rear, diameter 14 inch, 35.5cm, together with a pair of candlesticks each with plain stem on circular reeded bases with broad dish scone, ejectors missing, height 41cm (4) £70-100
- 1075 **A 19th century continental bowl**, with wavy reeded edge, raised on three lion mask feet, diameter 10 inch, 25cm, indistinct touch to base, together with a three branch candelabra, height 33cm (2) £80-100
- 1076 **A group of 19th century bulbous measures**, half pint to quarter gill capacity (6) £30-40
- 1077 **A pair of early 18th century plain rim dishes**, ownership triad r^p_e to rim and touch and hallmarks of John Harrison (Cott 2162) to rear, diameter 12 inch, 31cm (2) £100-150
- 1078 **A set of four continental single reeded plates**, diameter $10\frac{1}{4}$ inch, 26cm, a pair of 18th century plain rim dishes, diameter $13\frac{1}{4}$ inch, 33.5cm, and a pair of 18th century plain rim plates, both with incised ownership initials G.L. to rear (6) £100-150
- 1079 **Three 19th century Britannia metal coffee pots**, and two batchelor examples (5) £50-70
- 1080 **A set of three graduated dome meat covers**, four knob candlesticks, a chamber stick, four snuffer trays, two plate warmers, pepperettes and salts, a group of mostly straight and bulbous measures and a small quantity of smaller items, a lot £100-150
- 1081 **An 18th century lidded flagon**, of bulbous shouldered form, hallmarks to rim and ownership initials F.C., height 25cm, and an early 19th century French lidded measure of baluster form with palmette shell thumbpiece, height 27cm (2) £200-300
- 1082 **A quantity of mostly straight sided 19th century mugs**, quart, pint and half pint examples, a lot £120-180
- 1083 **A quantity of 19th century mostly bulbous mugs**, quart, pint, half pint, gill, half gill and quarter gill examples, a lot £100-150
- 1084 **A quantity of 19th century mustard pots**, pepper pots, capstan ink pots, egg cups, spirit measures, and small items, a lot £100-150
- 1085 **A pair of 19th century ice moulds**, another, candle and chamber sticks, flasks, a lidded tankard, a pint jug, a small quantity of flatware, and small items, a lot £100-150
- 1086 **Twelve 19th century spouted mugs**, quart and pint capacity of baluster and straight sided form (12) £70-100
- 1087 **A Britannia metal coffee pot**, two batchelor teapots, three twin handled cups, two lidded water jugs, a samovar, chalice, twin handled bowl, and coffee pot (10) £80-120
- 1088 **A group of 19th century measures**, silver-shaped items, including an oval salver, twin handled bowls, carved nut teabowls and a similar teapot, hot water jug and covered bowl, a lot £100-120
- 1089 **A 19th century meat plate warmer**, with side handles raised on feet, two others, two plates warmers, an oval platter and two single reeded dishes (8) £100-150
- 1090 **A Scottish Laver, circa 1700**, the gently tapering body with two narrow evenly spaced bands, flat lid twin cusp thumbpiece, height 20.5cm
**
* Ex Hopcraft Collection
See illustration on page 107 £2000-3000

- 1091 **An early 20th century broad rim dish**, mark of Duncombe to rear, diameter 14 inch, 35cm, together with a quart Irish haystack measure, marked Austen & Sons to base, height 19cm (2) £50-80
- 1092 **A 17th century Dutch Pewter chamber pot**, with scroll handle, evidence of natures gilding, 19cm diameter
 ** Excavated Amsterdam, Holland, 1999 £300-400
 *
- 1093 **An early 19th century Continental Pewter lidded flagon**, of baluster form, with scroll handle, acorn thumbpiece and later wrigglework, decorated panel of a bird within scrolling foliage, height 30cm £120-180
- 1094 **An 18th century Dutch pewter flared beaker**, with wrigglework decoration of entwined leaves beneath a scrolling foliate border, height 17cm (a/f) £300-400
- 1095 **AN IMPORTANT CHARLES II BROAD RIM COMMEMORATIVE CHARGER, CIRCA 1662**, the well engraved with the Royal Arms, the rim engraved with oak leaves and acorns, a royal portrait between the initials CR and dated 1662, together with the inscription "VIVAT REX CAROLUS SECUNDUS BEATI PACIFICI", on reverse of rim the inscription 'Henrietta * Faywether Charing Crosse", diameter 21 $\frac{7}{8}$ inch, 64.5cm, rim width 4 $\frac{1}{8}$ inch, 10.3cm (32%)
 ** Ex. G.J. Gollin Collection.
 * Exhibited at the Exhibition of British Pewter, Usher Gallery, Lincoln, 1962. no.221. Illustrated in 'Pewter Restoration Chargers' by Capt. A.V. Sutherland-Graeme, Connoisseur, June 1942, Figs. IV & IX. Geoffrey Gollin was a member of the Society of Pewter Collectors, now The Pewter society, from 1935
See front cover illustration £12000-15000
- 1096 **H. COTTERELL. 'Old Pewter, its Makers and Marks'**; P. Hornsby. 'Pewter of the Western World'; C. Peal. 'More Pewter Marks'; and other reference books including several museum publications (a lot) £100-150
- 1097 **R. F. MICHAELIS. 'Antique Pewter of the British Isles'**; R.F. Homer and D.W. Hall. 'Provincial Pewterers'; H. Massée. 'Chats on Old Pewter'; and several reference books (a lot) £150-200

END OF SALE