

EWL

European Glass and Ceramics

11 am Wednesday 6th September 2000 (Sale No: C1691)

Phillips

AUCTIONEERS

Works of Art, Furniture, Pewter, Barometers, Scientific Instruments and Clocks

11 am Friday 8th September 2000 (Sale No: C1692)

New House, 150 Christleton Road, Chester CH3 5TD

Phillips on the Internet: www.phillips-auctions.com

Catalogue price: £7.00 (£8.00 by post)

Front Cover Illustration: Lots 80 (detail) and 742 Back Cover Illustration: Lot 897

On View

Sunday 3rd September 2000 10 am–1 pm
Monday 4th September 2000 10 am–4 pm
Tuesday 5th September 2000 10 am–4 pm
Wednesday 6th September 2000 10 am–4 pm
Thursday 7th September 2000 10 am–4 pm
Friday 8th September 2000 9 am–10.45 am

Specialists

Tel: (01244) 313936
Alexander Clement (Ceramics and Glass)
Hilary Moss (Oriental Ceramics and Works of Art)
Antony Bennett (Clocks, Barometers and Scientific Instruments)
David Houlston, Hilary Moss (Furniture, Works of Art and Pewter)

Reserves and Commission Bids

Tel: (01244) 313936
Fax: (01244) 340028

Phillips Son and Neale Limited
Founded 1796

Chairman
Lord Powell of Bayswater KCMG

Chief Executive
Christopher Thomson

International Executive Director
Dan Klein

UK Executive Director
Paul Whitfield

Finance Director
Julie Goldstein

New House
150 Christleton Road
Chester CH3 5TD
Tel: 01244 313936
Fax: 01244 340028

Members of the Society  of Fine Art Auctioneers



Lots 774, 775, 776, 777, 778, 779, 780 and 781

PEWTER

- 765 **A Glasgow bulbous gill measure**, circa 1830, with embryo shell thumbpiece, bearing crown Imperial mark on lid, marked to neck, height 10cm £40-60
- 766 **An early 19th century quart tulip shaped mug**, the body with single mid fillet, hollow handle with hooded ball terminal, touchmark of Christopher Bancks, Bewdley (Cott 227) in base and hallmarks to collar, height 16cm £50-70
- 767 **A 17th century slip top spoon**, the fig shaped bowl on hexagonal stem, ownership triad I^CA and indistinct touch marked '89 to bowl, length 18cm, together with a spoon bowl only, bearing maker's mark 'heart in beaded circle' (2) £100-150
- 768 **A Victorian britannia metal communion set**, comprising a pair of chalices, a spouted flagon and a paten, in pine box £100-150
- 769 **A pint dome lidded tankard**, circa 1700, the body with single fillet, S-shaped handle with decorated hinge and spade terminal, the domed lid with double 'C' thumbpiece, probably Wigan, height 16cm £400-600

- 770 **An 18th century plain rim dish**, touchmark of William Eddon (Cott 1503) to rear, diameter 9½in. 24.5cm £100-120
- 771 **A mid 18th century plain rim plate**, ownership triad together with hallmarks and touchmark of Chris Whitfield (Cott 518) to reverse, diameter 9½in. 25cm, three similar plates, a pair of 9in. examples with ownership initials MC to rim and a plate warmer (7) £140-180
- 772 **An unusual 18th century quart mug**, the truncated cone shaped body with twin incised mid reeding, single curve handle with flush attachment, originally Old English Ale Standard verified with a crowned WR over W.W. (William III Ale Standard - see 'Marks and Markings of Weights and Measures', Ricketts/Douglas p49), later modified to comply to Imperial Standard by inserting a new bottom and striking 'WIV Imperial' under the original verification £100-140
- ** Unusual to modify from the base rather than from the top.

- 773 **A late 17th century triple reeded plate**, Swedish Provenance, the rim with hallmarks of John Stile, London (Cott 4542), together with a contemporary wriggleworked Swedish wedding engraving, HNP over MPD patronymia, perhaps e.g. Margareta Persdotte £150-200
 **
 * The last I.S. is obliterated as are the touchmarks to underside, Stiles hallmarks follow the order of some of John Storey's (Cott 4263) Crown hallmarks, dia 8 $\frac{3}{4}$ in., 20.5cm 130
- 774 **A quart double volute baluster measure**, circa 1750, the plain body and handle with ball terminal and diamond attachment height 20.5cm £300-500
 **
 * Ex Boocock Collection previously sold Sotheby's lot 1241 September 1992 850
 See illustration
- 775 **A pint double volute baluster measure**, circa 1750, the plain body and handle with ball terminal and diamond attachment, maker's mark of William Fasson (MPM 1639) height 15cm £200-300
 **
 * Ex Boocock Collection Sotheby's part lot 1244 September 1992 650
 See illustration
- 776 **A half pint double volute baluster measure** circa 1750, the plain body and handle with ball terminal and diamond attachment, maker's mark of John Fasson (Cott 1635) to collar height 13cm £150-200
 **
 * Ex Boocock Collection previously sold Sotheby's part lot 1244 September 1992 320
 See illustration
- 777 **A gill double volute baluster measure**, circa 1750, the plain body and handle with ball terminal and diamond attachment height 10cm £100-140
 **
 * Ex Boocock Collection previously sold Sotheby's lot 1245 September 1992 260
 See illustration
- 778 **Two early 19th century Jersey lidless measures**, 8.8 fl.oz. and 4.5 fl.oz. capacity, both with plain body and single curve handle height 11cm, 9.5cm (2) £200-300
 See illustration 340
- 779 **A half pint O.E.W.S. bud baluster measure**, circa 1720, the slender body with two bands of incised lines and splayed handle terminal, crown WR to lid and collar height 14cm £150-200
 See illustration 300
- 780 **A half gill O.E.W.S. baluster measure**, lacking lid, the slender body with three bands of triple incised lines, single curve handle height 7.5cm £60-80
 See illustration 100
- 781 **An early 19th century half pint baluster measure**, Imperial capacity, the body with three bands of incised lines, embryo shell thumbpiece, crown County Edinburgh mark to collar height 13cm £100-150
 See illustration 100
- 782 **An early 19th century spouted pint mug**, with truncated cone body, various crown marks and bearing portcullis and Norwich/Norfolk? marks to rim height 11cm £40-60
 35
- 783 **An early 18th century wavy edge plate**, with gadrooned and mask relief cast rim, touchmark of Henry Maxted (Cott 3150) to rear of rim diameter 9 $\frac{3}{4}$ in. 25cm £100-120
 340
- 784 **A pair of 18th century plain rim plates**, ownership initials I.C. to rear, diameter 24.5cm, two 19th century half pint beakers, a rounded rectangular lidded tobacco box, a Rococo style britannia metal chocolate pot, a cast relief decorated barrel shaped pepperette and a 'brandy' bottle label (9) £100-150
 140
- 785 **An 18th century Dutch wriggle-work beaker**, of flared form, decorated with entwined leaves beneath a scrolling foliate border, distressed height 17cm £100-200
 220
- 786 **An early 19th century plated lidded tankard**, the plain gently tapering body and slightly domed lid with open chairback thumbpiece, touch of I & H (Cott 5708) inside base and hallmarks to rim height 19.5cm £80-120
 190
- 787 **A reproduction lidded measure**, with cylindrical neck and bulbous body, height 21cm, another with domed lid and filleted bulbous body, height 13cm and a hip flask, length 11cm (3) £70-100
 65



Lots 788, 789, 790, 791, 792 and 793

- 788 **A pair of mid 18th century mugs**, possibly North England, each with flared beaker shaped body with high double incised band, S-curve handle with tongue thumbrest, height 8.5cm and another plain cup-shaped example with similar handle height 7.5cm
(3) *220* £150-180
See illustration
- 789 **A two handled cup**, circa 1750, with mid fillet and incised reeding on body, double curve handles with tongue thumbrests and fishtail terminals, one handle crudely re-attached top and bottom height 10.5cm, diameter 17cm
260 £300-500
See illustration
- 790 **A late 18th century American style teapot**, the pear shaped body with lobed ball finial, crown X Bristol mark to base height 17.5cm
100 £100-200
See illustration
- 791 **A spouted dome lidded jug**, circa 1820-40, solid chairback thumbpiece and raffia wrapped handle, touchmark of Samuel Cocks (Cott 1004) to underside height 18cm
180 £150-200
See illustration
- 792 **A 19th century half pint Edinburgh dome lidded bulbous measure**, height 12cm, together with two gill examples, one with crown Imperial mark on lid (3)
300 £140-180
See illustration
- 793 **A Group of three 19th century Glasgow lidded bulbous measures**, each with shell thumbpiece and dome lid bearing Crown Imperial mark, half pint and gill capacity (3)
340 £140-180
See illustration
- 794 **An early 18th century single reeded dish**, with ownership triad I^WM to rim and hallmarks of IB to rear diameter 15in., 38cm *70* £80-120
- 795 **A pair of late 18th century plain rim dishes**, each bearing monogram to rim, diameter 9.5in., 24.5cm, together with a similar plate, all with Duncomb(e) style touchmarks to reverse, together with a pair of 18th century plain rim plates (5) *170* £100-150
- 796 **Two early 19th century pint mugs**, a half pint example, a lidded mustard pot, a pair of Victorian britannia metal repousse decorated beakers, a teapot and milk jug (8) *85* £70-100
- 797 **A mid 18th century single reeded plate**, diameter 15in., 38cm and a late 18th century plain rim plate with ownership triad T^{BE} to rim diameter 15in., 38cm (2) *100* £100-120
- 798 **A group of six various bulbous measures**, quart to gill, a quart straight sided mug, together with a pair of knop candlesticks (9) *95* £100-120
- 799 **An 18th century plain rim charger**, ownership triad I^OH and indistinct touchmarks to rear diameter 18in., 46cm *170* £200-300
- 800 **A 19th century Continental twin handled lidded tureen**, with acorn finial and incised acorn leaf decoration to lid and sides diameter 33cm *85* £100-150
- 801 **A reproduction tappit hen**, possibly German, of typical form, touchmark to base height 15.5cm *240* £250-350
- 802 **A mid 18th century single reeded plate**, indistinct touchmarks to rear, diameter 16 $\frac{3}{4}$ in., 42cm, together with an 18th century plain rim plate with ownership triad to reverse diameter 13 $\frac{3}{4}$ in., 34cm (2) *90* £100-150



Lots 807, 808, 809, 810, 811 and 812

- 803 **A 19th century spouted dome lidded tankard**, the straight sided body, open chair back thumbpiece, double curve handle and fishtail terminal 150 £180-220
- 804 **A 19th century britannia metal dome lidded flagon**, the straight sided filleted body with palmette style thumbpiece and double curve handle, height 22cm, together with another similar, height 21cm (2) 250 £280-320
- 805 **A 19th century half pint beaker**, with short foot, tapering body with reeded rim and inscription, hallmarks, height 10cm, together with a half pint footed cup (2) 55 £50-60
- 806 **An 18th century plain rim plate**, ownership traid W^HM to rim, diameter 13 $\frac{1}{2}$ in., 33.5cm, another similar and a 12in., 30.5cm example (3) 200 £220-280
- 807 **A Scottish lidded tappit hen**, circa 1800, of typical form, Scottish pint capacity height 26.5cm 380 £200-300
See illustration
- 808 **A spouted flagon** circa 1700, plain gently tapering body, domed lid with extended shaped spout cover, twin lobed thumbpiece, S-shaped handle with twin lobed terminal, crown X to body and touch in base of William Wood II, Birmingham (mark 44 Homer and Hall, Provincial Pewterers) height 24cm £1400-1800
See illustration 2300
- 809 **A 16th century slender baluster measure**, lacking lid, incised reeding to rim, solid handle with flush attachment, wine quart 33.3fl.oz capacity height 22cm 950 £800-1200
See illustration
- 810 **A rare two handled gadrooned cup**, circa 1700, the handles with bead decoration and bootheel terminals, touch in base of Adam Banckes, Wigan (Cott 222a), one handle with brass 'rivet' lower attachment height 15.5cm, diameter 24.5cm 5400 £3000-4000
See illustration
- 811 **A 15th century saucer**, gentle booge with incised line around boss, touch of a circled hammer to rim diameter 5 $\frac{1}{2}$ in., 13.2cm 1650 £700-1000
See illustration
- 812 **A pint flat lidded tankard**, circa 1700, the tapering drum with two fillet bands and reeded domed foot, the lid with denticulations, bombé thumbpiece, crown AR to rim and maker's mark R.B. in base, partly mishapen, lacking handle terminal and base partly re-soldered height 18cm 2800 £1500-2000
See illustration
- 813 **Three 19th century concave sided mugs** quart, pint and half pint, two stamped J McGlashan & Co., Glasgow (3) 120 £150-180



Lots 820, 821 and 822

- 814 **An 18th century dish**, sides and booge fluted, indistinct touch and incised ownership initials I.S. to rear, repairs diameter 9in., 23cm
 95 £100-120
- 815 **A pair of early 19th century unusual 12-lobed Rococo plates**, each clearly struck to reverse three times with oval angel marks bearing inscription Engels Block Tin, Darch Iann de Was', unidentified, dia 9in., 23cm, weight 525g (2)
 110 £120-180
- 816 **Two similar 19th century spouted quart tulip shaped measures**, each with mid fillet and reeding, both well engraved 'REM' to body, one with touchmark of Geradine and Watson (Cott 1837) to base, with single curve handle and escutcheon attachment, chip engraved to underside R. Mattheus's Chequer's, Church End, Hendon', good unrecorded three sword verification mark from Middlesex County circa 1835, together with 'WR' over 'Quart' over 'IV' mark, (similar marks recorded in 'Marks and Markings of Weights and Measures', Ricketts/Douglas p. 63), the other by Watkins, London, with double scroll handle and fishtail terminal, strut attachments, chip engraved underneath R. E. Morgan, Kemeys, Monmothshire (2) £140-180
 170
- 817 **A group of five 19th century measures**, including a pint example by Henry Mason of Birmingham, another by Farmiloe engraved Jacob's Well, Hatfield, Herts to the underside, another unmarked, a half pint example by Moyes of Edinburgh with accanthus thumbrest and another by Ingram and Hunt of Bewdley (5)
 130 £140-180
- 818 **A pair of 20th century cup salts**, height 5.5cm, diameter 7.5cm (2)
 55 £60-80
- 819 **A set of twelve late 19th plain rim plates**, each bearing monogram of Archdeacon Charles Holbech of Farnborough Hall, Oxfordshire and dated 1885, touchmark of James Yates, Birmingham (Cott 5338) to rear diameter 9 $\frac{3}{4}$ in., 24.5cm (12)
 850 £1000-1200
- 820 **A late 17th century triple reeded charger**, ownership initials S.W. and indistinct hallmarks to rim, indistinct touchmark to reverse diameter 22in., 55.5cm
 1100 £1000-1200
See illustration
- 821 **A late 17th century triple reeded charger**, indistinct hallmarks, possibly maker LT to rim, touchmarks twice and London mark to reverse diameter 20in., 51cm
 600 £700-900
See illustration



Lots 828, 829 and 830

- 822 **A late 17th century triple reeded charger**, ownership initials F.S. and hallmarks of Adam Banckes, Wigan (MPM & Cott 222a) to rim, crown rose struck twice to rear diameter 20½in., 51.5cm £800-1000
See illustration 720
- 823 **A 20th century Continental wavy edge reeded oval dish**, with embossed crowned serpent to centre, together with another similar with unicorn heraldic arms diameter 10in., 26cm, 11½in., 29cm (2) £180-220
 150
- 824 **An 18th century single reed plate**, ownership initials SS to rim, touchmarks and hallmarks of William Smith of York/Leeds (Cott 4402) diameter 16½in., 42cm £200-300
 170
- 825 **An 18th century single reeded plate**, touch and initials MM to rim diameter 14in., 36cm £150-200
 120
- 826 **A near set of four reproduction single reeded plates**, three with hallmarks to reverse diameter 10in., 25cm (4) £60-80
 45
- 827 **An 18th century single reeded plate**, ownership initials AC to rim, worn touchmark to reverse diameter 16½in., 42cm £150-200
 120
- 828 **An unusual flat plate**, circa 1700, with extremely broad rim (5.5in., 14cm), incised multiple reeding to rim and impression to centre diameter 18½in., 46.5cm £400-600
See illustration 700
- 829 **A Continental engraved dish, possibly 17th century**, with boss to centre, the rim and boss engraved with the life of Christ, touchmark and owner's mark to rim diameter 16 ¾in., 42.5cm £1200-1500
See illustration 800
- 830 **A late 17th century triple reeded charger**, with raised well, ownership triad ^HI and hallmarks IW to rim diameter 18½in., 46.5cm £500-700
See illustration 720
- 831 **A pair of late 19th century britannia metal spouted flagons**, each with domed lid above a tapering filleted drum with flared base, S-curved handle with heart shaped terminal, one lacking thumbpiece height 30cm (2) £280-350
 200



Lots 836, 837, 838, 839 and 840

- 832 **An unusual mid 19th century half pint mug**, with double skin, by Stocker and Everett, London, the cylindrical footed body engraved with the initials JEB, with patent badge cast to underside, together with two straight sided half pint mugs, cast in the same mould, one by James Yates, Birmingham, with Northampton Corporation verification mark and one with false double skin inserted to create a false bottom, so called a barmaid's mug, by Gaskell & Chambers (3) **140** £100-120
- 833 **An Edinburgh quart mug**, circa 1830, the truncated cone shaped body with reeded fillet, strut-attached S-curve handle with ball terminal, mark inside base of J. Moyes (Cott 3317), bearing verification marks from Edinburgh, Aberdeen County and Hamilton £120-150
 **
 * A similar quart mug sold Sandy Law Sale, Phillips, Chester, September 1997, lot 166. **130**
- 834 **A 19th century spouted French measure**, of baluster footed form, with gently domed lid, shell thumbpiece and double curve handle, crowned rose mark to base, lid re-attached, bottom strut of handle loose, height 30cm **45** £50-70
- 835 **A half gallon measure**, the gently tapering body with reeded base and D-shaped handle, marked under base Gaskell and Chambers height 21cm **160** £120-150
- 836 **An 18th century quart dome lidded tankard**, filleted tulip shaped body, pierced heart chair back thumbpiece, single curve handle with hooded ball terminal, base marked E P height 20cm **550** £250-300
See illustration
- 837 **A quart dome lidded tankard**, circa 1720, slightly tapering low filleted body, ramshorn thumbpiece, cast decorated hollow S-shaped handle with bootheel terminal, maker's mark E.F. in base height 18cm **1200** £600-800
See illustration
- 838 **An 18th century dome lidded tankard**, with tulip shaped filleted body, pierced chairback thumbpiece, curved handle with hooded ball terminal, touch in base of William Eddon (Cott 1503), ownership triad G^GM to side height 20cm **1150** £600-800
See illustration
- 839 **An 18th century lidded ale jug**, with bulbous filleted body and domed lid with upright plume thumbpiece, overlap handle, spout with grating, touchmark of John Sedwick, York (Cott 4179) to underside height 20cm **620** £600-800
See illustration



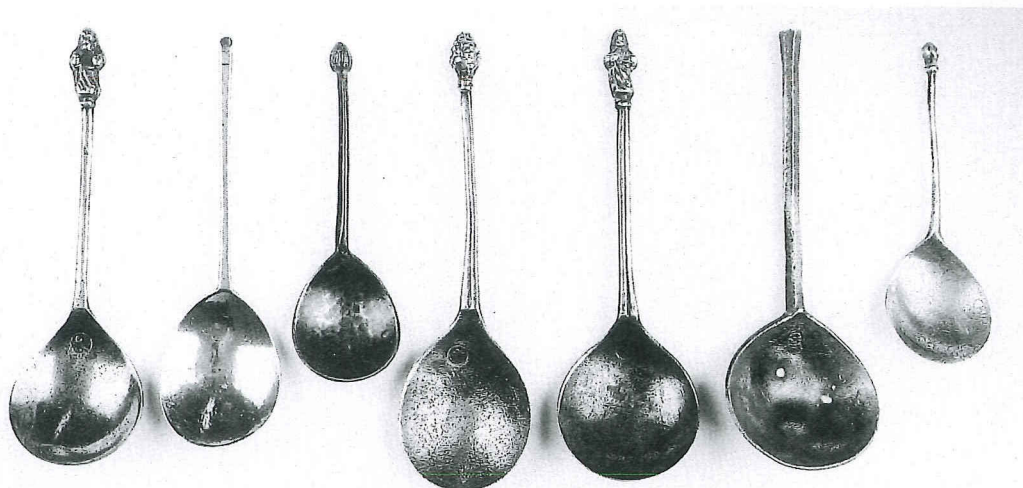
Lots 846, 847, 848 and 849

- 840 **A Swedish wriggle work dome lidded tankard**, with pulmette thumbpiece and double curved handle with heel terminal, large floral decoration to body, plowk to inside of rim and hallmarks to base, corosion to handle and replacement lid height 19.5cm £300-500
See illustration 260
- 841 **A 19th century Continental spouted measure**, the tapering body with two bands of multiple incised lines, the lid with male profile relief, heart shaped spouted cover and single curve handle with heel terminal, height 19.5cm, together with a French lidded spouted measure of baluster form, repairs, height 27cm (2) £150-200
170
- 842 **A mid 18th century bulbous footed salt**, diameter 7.5cm, a late 18th century pepperette height 14cm, a mid 19th century britannia metal plate by James Dixon and Sons, Sheffield, diameter 10in., 25.5cm (3) £100-150
85
- 843 **A pair of mid 19th century candlesicks**, each with tapering cotton reel stem and domed foot height 23.5cm (2) £120-180
120
- 844 **A mid 19th century dome lidded quart concave sided tankard**, with low reeding, chairback thumbpiece and single curve handle with flush attachment, rubbed mark of James Yates, Birmingham (Cott 5338) to rim £150-200
140
- 845 **An early 19th century ice bucket**, the flared body with incised bands and drop handles height 17cm 130 £150-200
- 846 **A very near pair of 19th century French spouted measures**, each with body of necked bulbous form, with twin cusped thumbpiece and flush handle attachment, touchmark to base height 27cm (2) £350-450
See illustration 360
- 847 **A 19th century French lidded measure**, double litre capacity, the straight sided body with circular lid and raised collar with numerous verification marks, stamped 'Leclerg Humbert A Lille' to base height 26cm £200-250
See illustration 180
- 848 **A 20th century tyg**, the body of baluster form with reeded foot, single curve handles, pseudo touchmark of Bush and Perkins (Cott 740) to rim along with crown X height 20.5cm £280-350
See illustration 220
- 849 **A 19th century French lidded measure**, litre capacity, the straight sided body and heart shaped lid, marked N&C to base, height 21cm, together with a 19th Flemish lidded measure, height 21cm (2) £150-180
See illustration 150



Lots 870, 871 and 872

- 850 **Three 18th century plain rim plates**, each with G.W. monogram to rim and indistinct touchmark to rear diameter 9 $\frac{3}{4}$ in., 24.5cm (3) **90** £60-80
- 851 **An 18th century single reeded plate**, crowned ownership triad T^LI to rim and touchmark of G.Lowes, Newcastle (Cott 3001), diameter 9in., 23cm, together with a late 18th century plain rim dish, with crowned L to rim and hallmarks of Duncomb(e) (Cott 5725) to rear, 9 $\frac{1}{2}$ in., 24.8cm and another similar (3) **130** £70-100
- 852 **An 18th century plain rim plate**, unidentified hallmark to rear and ownership triad P^LM, diameter 9 $\frac{1}{2}$ in., 24cm, together with four other plain rim plates of similar size (5) **180** £100-120
- 853 **A pair of single reeded plates**, each with touchmark of Harris (Cott 2158) to reverse and hence probably reproduction, diameter 12in., 30.5cm, together with a pair of reproduction dishes, diameter 14in., 35.5cm (4) **100** £100-200
- 854 **An 18th century single reeded plate**, diameter 13 $\frac{1}{2}$ in., 34cm and a plain rim example 14in., 35.5cm with touchmark to reverse (2) **90** £100-150
- 855 **A pair of 18th century plain rim plates**, diameter 16 $\frac{1}{2}$ in., 42cm, together with another plain rim plate with ownership initials AD, patched, diameter 16 $\frac{1}{2}$ in., 42cm (3) **180** £200-300
- 856 **An 18th century single reeded charger**, ownership initials AH to rim and worn hallmarks to reverse diameter 18in., 46cm **150** £180-220
- 857 **A group of three 19th century plate warmers**, each with the touchmark of Carpenter and Hamberger, London (Cott 812) to the reverse diameter 8 $\frac{1}{2}$ in., 21.5cm (3) **110** £70-100
- 858 **A set of four 19th century britannia metal goblets**, each with knopped stem and reeded foot height 21cm (4) **130** £80-120
- 859 **An 18th century deep bowl**, Irish, the narrow rim with unidentified hallmarks, marked Dublin to base diameter 9in., 23cm **110** £80-100
- 860 **A 19th century Glasgow lidded bulbous measure**, with shell thumbpiece and dome lid bearing crown Imperial mark, together with a cylindrical inkpot, a funnel, pepperette, snuff box, caddy spoon and meat cover (7) **120** £100-200
- 861 **A group of three 19th century French straight sided measures**, demi litre, double decilitre and decilitre capacities (3) **30** £40-60
- 862 **Three 20th century plain rim dishes**, 10 $\frac{1}{2}$ in., 27cm, together with three reproduction plain rim plates 9in., 23cm and three similar smaller examples, 8in., 20cm (9) **55** £60-80
- 863 **A Continental triple reeded plate**, touchmark struck three times to rim diameter 13 $\frac{1}{4}$ in., 34cm **110** £100-200



Lots 874, 875, 876, 877, 878, 879 and 880

- 864 **A group of thirty mostly 19th century bulbous measures**, quart to quarter gill capacity (30) **220** £200-300
- 865 **A group of eighteen mostly 19th century straight sided measures**, quart to half pint capacity, together with a quart tulip shaped measure (19) **280** £140-180
- 866 **An 18th century chamberstick**, touchmark of William Wright (Cott 5310) to reverse, extensive restorations, together with a samovar, a spirit kettle, chestnut roaster, a small tazza, a reproduction porringer, a Dutch style spoon, tea and souvenir ware (a lot) **95** £100-200
- 867 **A group of reproduction Irish haystack measures**, two pint examples, a half pint, gill and half gill and a reproduction lidless gill baluster measure (6) **85** £100-150
- 868 **A pair of 19th century knop candlesticks**, height 20cm (2) **95** £80-120
- 869 **Two pairs of britannia metal knop candlesticks**, 21cm, 28.5cm (4) **120** £100-150
- 870 **A late 17th century triple reeded charger**, hallmarks to rim and touchmark to rear of Robert Garratt (MPM 1815a) diameter 18½in., 46.5cm **460** £400-600
See illustration
- 871 **A mid 18th century triple reed variant charger**, with touchmarks of 'Covroye' to rear and crown 'Paris 1701' mark diameter 20.5in., 52cm **450** £450-550
See illustration
- 872 **A late 17th century triple reeded charger** diameter 20½in., 51.5cm **330** £400-600
See illustration
- 873 **A late 17th/early 18th century English porringer**, the 'booged' bowl with bossed well and single pierced ear, Michaelis type 16 diameter 13.7cm **920** £500-600
- 874 **A late 16th/ early 17th century latten Apostle spoon**, maker's mark to bowl length 17cm **440** £500-600
See illustration
- 875 **A latten spoon**, circa 1600, maker's mark to fig shaped bowl length 16cm **260** £300-350
See illustration
- 876 **A 15th century latten 'pineapple' knopped spoon**, diamond stem and hammered fig shaped bowl length 13.5cm **420** £350-400
See illustration
- 877 **A mid 17th century latten 'strawberry' knopped spoon**, maker's mark to fig shaped bowl length 18cm **300** £350-400
See illustration
- 878 **A late 16th/early 17th century latten Apostle spoon** maker's mark H.G. to bowl length 18cm **450** £500-600
See illustration
- 879 **An early 17th century Dutch stump-end spoon**, with round bowl on a slender hexagonal stem, crown rose mark to bowl, extensive nature's gilding length 17.5cm **150** £120-150
See illustration
- 880 **A 15th century wrythen latten knopped spoon**, diamond stem with fig shaped bowl length 13cm **300** £350-400
See illustration



Lots 885, 886, 887, 888, 889 and 890

881 **A 19th century Swedish spouted flagon,**
the tapering body with two bands of incised
lines, the lid with heart shaped spout cover,
ball thumbpiece and double curve handle,
hallmarks to base height 26cm £150-200

882 **A late 17th semi-broad rim double reeded
charger** ownership triad W^RM to rim, together
with hallmarks of George Smith (Cott 4347),
touchmark to rear diameter 20½in., 52cm
£600-800

460

883 **An 18th century single reeded charger,**
ownership initials EM to rim diameter 18in.,
46cm £150-200

150

884 **A 19th century sarcophogus shaped
teacaddy,** a pair of baluster candlesicks height
29.5cm, a bookcover, a capstan inkwell, three
kettle stands, six footed salts, a chinese lidded
box, a laddle and a pin tray (17) £100-120

150

885 **An early 17th century 'pitchet' measure,**
French, probably South-West Languedoc region,
of shouldered form with incised twin lines,
with heart shaped lid, twin acorn thumbpiece,
single curve handle with flush attachment,
height 25.5cm £800-1200

200

See illustration

- 886 **A 16th century French dish**, gentle booge and shallow boss with incised line, incised marks and unidentified B? mark to rim, worn edges, diameter 9in., 23cm £100-200
See illustration 110
- 887 **An 18th century French helmet shaped ewer**, the body with reeded fillet, knopped stem with gadrooned dome foot, scroll-wrapped curved handle, maker's mark of Antoine Lacombe (received master in 1700) and mark for fine pewter from Lyon 1732 to underside, height 26cm, repairs, polished £500-700
See illustration 420
- 888 **A late 18th century Continental hanging trade sign of a smith**, the trade tools within a floral wriggle worked shaped frame with inscription below, similar decoration to reverse and dated 1778 31 x 26cm £200-300 300
- 889 **A mid 18th century lidded tobacco box**, the circular reeded domed lid relief cast with a Royal bust portrait embraced by a crown and sceptre and the initials GR, the base with twin pierced shaped handles and twin bands of incised lines, one handle and inside of lid bearing the touch of Rtter (Hinzo Vol. VII), Master in Innsbruck from 1742, height 8cm, width 20.5cm £300-400
See illustration 280
- 890 **A late 18th century 'porte-diner'**, French, the bulbous body with swing carry handle and domed lid serving as a bowl, ownership initials 'MIG' to underside and pewter mark from Saint Germain en laye, near Paris to lid and base, dia 22.5cm, height 17.5cm £300-400
See illustration 260
- 891 **A late 17th century broad rim dish**, French, Bordeaux region, unidentified touchmark G.D. to rear of rim, hammered rear engraved Delaville, dia 13in., 23cm, rim 2 $\frac{3}{4}$ in., 6.5cm £400-600 390
- 892 **An 18th century plain rim charger**, indistinct touchmark and London label to reverse, stamped W. Hooper twice and ownership initials ML, small tear to rim, dia 22in., 56cm £500-800 380
- 893 **A late 17th century triple reeded charger**, ownership triad F^AA to rim, together with four identical leopard's head hallmarks on rim, obscure touchmarks to underside of John Batchelor, Bristol (Cott 295, 5436), see also OP 5468, dia 18 $\frac{1}{2}$ in., 46cm £400-600 340
- 894 **A late 17th century triple reeded charger**, ownership initials M.T. to rim, together with faint hallmarks of John Barlow (Cott 256), touchmarks to reverse worn but London label visible, dia 16 $\frac{1}{2}$ in., 42cm £400-600 380
- 895 **A pair of 18th century single reeded church plates**, both engraved across the base 'Tetney Parish, Lincolnshire 1735', crowned X touchmark of John Donne (Cott 1416 LTP 488), London label to reverse £400-600
** Donne took livery in 1694 and was master of the London Company in 1727. This is also the year he died which predates the inscription by 8 years. 600
- 896 **An 18th century five-lobed reeded rococo plate**, touchmark to reverse, together with Cornhill label of Joseph Spackman Sr., London (Cott 4440), 25cm £150-200
** Spackman moved to Cornhill in 1794 140



Lot 897

- 897 **An important Charles II broad rim wriggleworked commemorative charger, circa 1662**, the well engraved with the Royal Arms, the rim engraved with meandering oak leaves and acorns, the well edge bearing inscription 'VIVAT REX CAROLUS SECUNDUS BEATI PACIFICI 1662', the rear with punched/wriggled initials IC, PP, F and touch of a fleur de lys ?A. in a circle, diameter 16 $\frac{3}{8}$ in., 41.5cm, rim width 2 $\frac{3}{4}$ in., 7cm (38%) £10000-15000

**
* Ex Rev. O. E. Brooks collection and hence by descent.

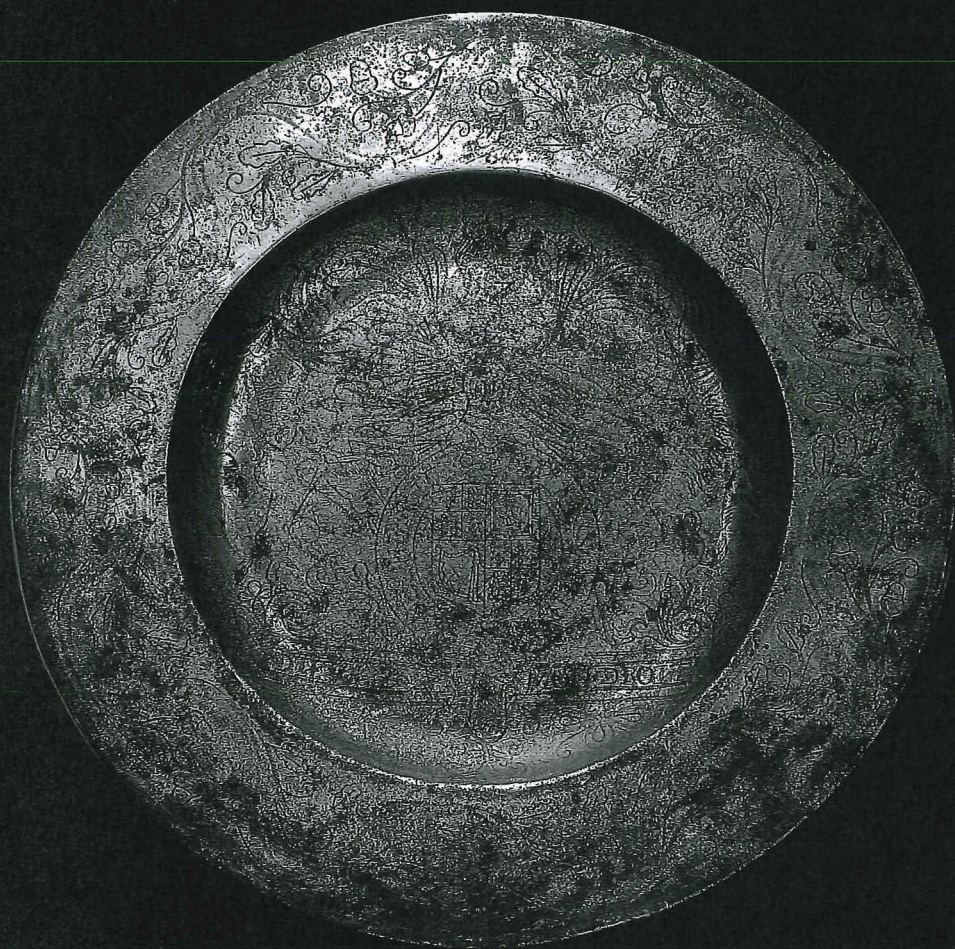
Illustrated in 'Pewter Restoration Chargers' by Capt. A. V. Sutherland-Graeme, *Connoisseur*, June 1942, Fig. VII, p. 127.

Sold with photocopied correspondence between previous owner and Sutherland Graeme 1935-38.

A similar charger was sold 15th October 1999, lot 1095, hammer £23,000.

See illustration and back cover

25000



Phillips
AUCTIONEERS