

ETU

SALE NUMBER 3539

CATALOGUE PRICE \$4.00 · BY MAIL \$5.00

Exhibition from Friday June 15, 1973 to 3 p.m. on-day prior to Date of Sale

Galleries open 10 a.m. to 5 p.m. · Monday through Friday

AMERICAN, ENGLISH AND CONTINENTAL SILVER,
AMERICAN AND ENGLISH COUNTRY FURNITURE,
GLASS, POTTERY AND CHINESE EXPORT
PORCELAIN

Various Owners · Including

The Estate of LILLIAN MARGOLIS New York

The Estate of DOROTHY MARSH McGAVACK New York

The Estate of the Late PRINCESS DESIRÉE WINDISCH-GRAETZ

PUBLIC AUCTION

FIRST SESSION: THURSDAY, JUNE 21, 1973 AT 2 PM

American, English and Continental Silver

SECOND SESSION: FRIDAY, JUNE 22, 1973 AT 10:15 AM

A Collection of English Victorian Pottery;

Chinese Export Porcelain; and Cut, Pressed and Lacy Glass

THIRD SESSION: FRIDAY, JUNE 22, 1973 AT 2 PM

Pewter; Decorations and Folk Art;

and American and English Country Furniture

Exhibition and Sale at The New York Galleries of

SOTHEBY PARKE BERNET INC

980 Madison Avenue (76th-77th Streets) New York 10021—212/879-8300

Front Cover Illustration: Number 245

Back Cover Illustration: Number 159

**PEWTER, FOLK ART AND
OTHER DECORATIONS**

Property of Various Owners

314 SIX GEORGIAN PEWTER PLATES

Late 18th Century

Four with plain rims, two with molded rims, three struck with pseudo hallmarks, *various makers including Francis Piggott*. Diameter 9 inches

140 -

315 GERMAN PEWTER GUILD TANKARD

Late 18th Century

On claw-and-ball feet, the barrel engraved with names and masonic devices, the domed cover engraved with a flower-head, with urn thumbpiece. Height 9¾ inches

300 -

316 AMERICAN PEWTER CUSPIDOR

Possibly by Lewis Whitmore, Rocky Hill, Connecticut, c. 1840

The cylindrical vessel with a pierced and removable cover above a molded base, *maker's mark Whitmore*.

Diameter 8 inches

80 -

317 PEWTER COFFEE POT

Dutch or Flemish, late 18th Century

Of pear shape, raised on three brass hoof feet, *maker's mark L.P.F.* Together with a pewter dish embossed with armorials and rococo motifs, *19th Century*. 2 pieces. Height 11¾ inches

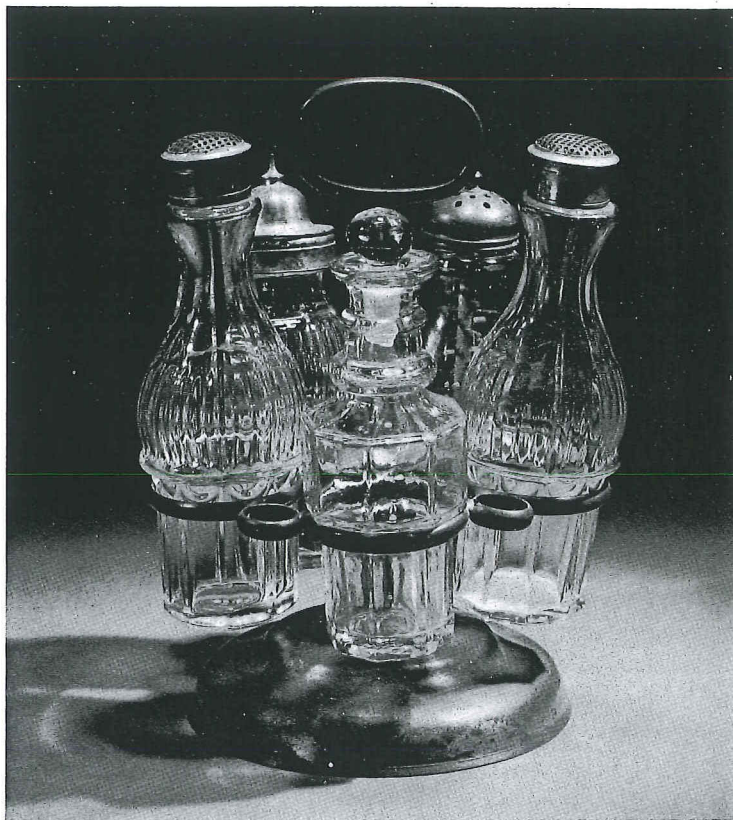
100 -

318 PEWTER PORRINGER

Frederick Bassett, New York and Hartford, Connecticut, c. 1761-1800

Having a flowered handle, *bearing Jacobs' touch number 26*. Bottom replaced. Diameter 5 inches

175 -



319

319 AMERICAN PEWTER CRUET STAND

Mid-19th Century

Having an oval handle on a baluster standard with revolving holders containing five glass condiment bottles; the whole on a stepped dome base. 6 pieces. Height 8¾ inches

See illustration

50 -

320 CONTINENTAL PEWTER CHARGER AND PLATE

The charger plain, with molded border, *German, 19th Century*; the plate engraved with armorials, *probably Swiss*.

Diameters 14¾ and 9¾ inches

110 -

321 TWO FRENCH PEWTER MEASURES *19th Century*

Of straight-sided cylindrical form, with molded borders, litre and deci-litre size. Heights 7 and 3½ inches

70 -

322 PEWTER CHARGER AND PLATE

A charger with triple molded rim, *maker's mark not clear, probably English, late 18th Century*; and a plate with molded rim, *German or Dutch, c. 1800*.
Diameters 16¾ and 10 inches

323 GROUP OF PEWTER TABLE ARTICLES

A German small spirally-fluted coffee pot, *late 18th Century*; a pair of baluster measures, *English, c. 1820*; and a small circular dish, *modern*. 4 pieces.
Height of coffee pot 6½ inches

324 THREE PEWTER FLAGONS *Probably Swiss*

Of baluster form, one with twin acorn thumbpiece, stamped with initials, *late 18th Century*; another smaller, with forked thumbpiece, *unmarked, early 19th Century*; the third in 18th Century style, *modern*. Heights 8½ to 11½ inches

325 INLAID ROSEWOOD SHELF CLOCK

William L. Gilbert Clock Co., Winsted, Connecticut, c. 1875
The arched hexagonal case centering a white-painted dial enclosed by a gilt-wood door with an *églomisé* panel decorated with gilt scrollwork and a rose sprig on a black ground; on a molded base. Height 11 inches; width 8¾ inches

326 INLAID ROSEWOOD SHELF CLOCK

William Gilbert & Co., Winchester, Connecticut, c. 1862
The upright rectangular case patented by L. B. Woodruff and centering a white-painted dial with outside escapement and floral spandrels above an *églomisé* panel depicting a sprig of roses; on a molded base. Height 9½ inches; width 7¾ inches

327 TURNED WOOD SPOOL HOLDER

American, 19th Century
The scroll-cut sides supporting two scalloped tiers pierced by spool holders with turned wood finials; the case below with a single drawer, on turned feet. Height 9⅞ inches

328 SILK AND CHENILLEWORK PICTURE

Early 19th Century

Depicting a maiden in a garden setting, holding a basket of flowers, her face and the background executed in watercolors. Framed. Size: 15 x 12½ inches

329 PAIR OF BRONZE THREE-LIGHT CANDELABRA

American or English, c. 1850

The three floriform candle sockets with pendant cut glass lustres and supported on scrolling foliate candle arms, the central arm sprouting from an urn; on a rectangular base molded with acanthus and resting on four molded bun feet. Fitted for electricity. Height 13 inches

330 GILT-BRONZE MANTEL GARNITURE

Mid-19th Century

Comprising a three-branch candelabrum and a pair of candlesticks, the candle arms in the form of leaf scrolls and hung with faceted lustres above supports modelled as either a classical warrior or a maiden; on rectangular white marble bases. Heights 17½ and 14 inches

331 BLOWN GLASS RUM BOTTLE MOUNTED AS A LAMP

Last Quarter 19th Century

An ovoid vessel with a flattened pyriform cover, the whole ornamented with faceting and inscribed *Gordon's Fine Old Rum*, fitted into a brass wall mount and retaining the original brass petcock. Height 28 inches

332 VICTORIAN MAHOGANY STICK BAROMETER

E. C. Spooner, Boston, c. 1850

Having a shaped crest and waisted base picked out in black. Height 42 inches

LOT	PRICE	LOT	PRICE	LOT	PRICE
221	110.00	283	150.00	331	50.00
222	90.00	285	90.00	332	140.00
223	170.00	286	120.00	333	160.00
224	120.00	287	325.00	334	50.00
225	90.00	288	110.00	335	350.00
227	90.00	290	150.00	336	70.00
229	225.00	291	60.00	337	200.00
230	70.00	292	200.00	338	375.00
231	100.00	293	30.00	339	125.00
232	90.00	294	100.00	340	225.00
233	250.00	295	60.00	341	50.00
234	100.00	296	40.00	342	200.00
236	90.00	297	50.00	343	150.00
237	50.00	298	275.00	344	60.00
238	50.00	299	50.00	345	50.00
240	130.00	300	325.00	346	230.00
242	140.00	301	170.00	347	110.00
243	150.00	302	50.00	348	425.00
244	150.00	303	60.00	349	150.00
245	600.00	304	130.00	350	150.00
246	80.00	305	120.00	351	140.00
247	125.00	306	80.00	352	120.00
248	160.00	307	140.00	353	125.00
249	60.00	308	160.00	354	300.00
250	80.00	309	210.00	355	80.00
252	70.00	310	80.00	356	90.00
253	75.00	311	210.00	357	210.00
254	100.00	312	80.00	359	225.00
255	40.00	313	180.00	360	130.00
258	175.00	314	140.00	361	160.00
260	90.00	315	300.00	362	30.00
262	125.00	316	80.00	363	400.00
263	275.00	317	100.00	364	190.00
264	90.00	318	175.00	365	120.00
265	70.00	319	50.00	368	80.00
267	175.00	320	110.00	369	110.00
268	250.00	321	70.00	370	190.00
269	110.00	322	180.00	371	110.00
270	40.00	323	100.00	372	150.00
271	50.00	324	200.00	373	250.00
272	40.00	325	80.00	374	275.00
273	300.00	326	70.00	375	180.00
274	150.00	327	40.00	376	210.00
276	30.00	328	60.00	377	900.00
280	130.00	329	50.00	378	150.00
282	60.00	330	90.00	379	225.00

Gettys Park Cemetery 21-6-1973