

A Collection of Antique
PEWTER, SILVER, PORCELAIN and GLASS

Sale Number 633

THURSDAY, MAY 31, 1979 at 1:00 pm

BOSTON GALLERY

Preview: Wednesday May 30, 1:00-5:00 pm

Thursday May 31, 9:00 am-12:00

ROBERT W. SKINNER Inc.

Auctioneers — Appraisers

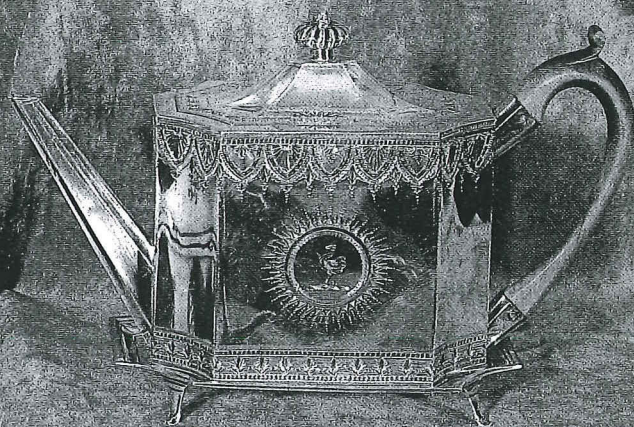
MAIN GALLERY
Route 117
Bolton, Mass. 01740
(617) 779-5528

COPLEY SQUARE GALLERY
585 Boylston St.
Boston, Mass. 02159
(617) 236-1700

Illustrated catalogue price: \$6.00 postpaid.
\$1.00 additional for post auction price list.

Cover Illustrations: lots 14, 29, 66, 107

A Collection of Antique
PEWTER, SILVER, PORCELAIN and GLASS



MAY 31, 1979

ROBERT W. SKINNER Inc.

ION 633

ROBERT W. SKINNER INC.
AUCTIONEERS-APPRAISERS
BOLTON BOSTON

DATE 5/31/79

TER, SILVER, PROCELAIN & GLASS
LOT# PUR. PRICE LOT# PUR. PRICE

PRICE LIST
LOT# PUR. PRICE

1	325.00	51	400.00	101	110.00	151	150.00
2	375.00	52	375.00	102	50.00	152	250.00
3	200.00	53	100.00	103	300.00	153	225.00
4	50.00	54	200.00	104	50.00	154	50.00
5	30.00	55	400.00	105	110.00	155	75.00
6	100.00	56	125.00	106	250.00	156	125.00
7	70.00	57	125.00	107	375.00	157	50.00
8	325.00	58	125.00	108	320.00	158	50.00
9	90.00	59	150.00	109	110.00	159	160.00
0	500.00	60	275.00	110	80.00	160	350.00
1	50.00	61	300.00	111	150.00	161	375.00
2	4000.00	62	125.00	112	600.00	162	150.00
3	550.00	63	175.00	113	625.00	163	150.00
4	1300.00	64	175.00	114	500.00	164	150.00
5	180.00	65	45.00	115	120.00	165	150.00
6	310.00	66	700.00	116	200.00	166	100.00
7	450.00	67	325.00	117	325.00	167	135.00
8	250.00	68	100.00	118	300.00	168	110.00
9	500.00	69	150.00	119	80.00	169	50.00
0	800.00	70	75.00	120	120.00	170	110.00
1	150.00	71	225.00	121	120.00	171	130.00
2	675.00	72	75.00	122	275.00	172	100.00
3	390.00	73	275.00	123	170.00	173	100.00
4	275.00	74	225.00	124	40.00	174	175.00
5	425.00	75	100.00	125	50.00	175	25.00
6	250.00	76	150.00	126	160.00	176	100.00
7	700.00	77	350.00	127	200.00	177	160.00
8	570.00	78	50.00	128	600.00	178	210.00
9	725.00	79	600.00	129	1900.00	179	120.00
0	475.00	80	200.00	130	215.00	180	140.00
1	650.00	81	225.00	131	750.00	181	65.00
2	350.00	82	125.00	132	600.00	182	40.00
3	600.00	83	675.00	133	700.00	183	160.00
4	150.00	84	75.00	134	425.00	184	85.00
5	575.00	85	325.00	135	700.00	185	230.00
6	80.00	86	150.00	136	425.00	186	230.00
7	160.00	87	375.00	137	90.00	187	120.00
8	230.00	88	150.00	138	375.00	188	180.00
9	300.00	89	200.00	139	170.00	189	120.00
0	200.00	90	450.00	140	70.00	190	170.00
1	325.00	91	225.00	141	145.00	191	65.00
2	150.00	92	50.00	142	50.00	192	200.00
3	50.00	93	200.00	143	240.00	193	150.00
4	175.00	94	175.00	144	100.00	194	25.00
5	300.00	95	575.00	145	160.00	195	25.00
6	250.00	96	300.00	146	500.00	196	75.00
7	275.00	97	425.00	147	175.00	197	175.00
8	130.00	98	325.00	148	325.00	198	100.00
9	225.00	99	275.00	149	625.00	199	110.00
0	225.00	100	150.00	150	500.00	200	190.00
						201	180.00
				205	55.00	202	25.00
				206	85.00	203	65.00
				207	55.00	204	150.00

67. SIX ORIENTAL PORCELAIN PLATES, floral designs, four soup plates, two in Imari colors and two in polychrome, diameter: 8 1/8 inches, and two plates in Imari colors, diameters: 8 1/2 and 8 7/8 inches, (damage), China, late 18th century.

[150/200]

68. TWO ORIENTAL PORCELAIN DEEP DISHES, Japanese Imari with a vase and floral design, diameter: 12 1/4 inches, (damaged), and a Chinese floral design in Imari colors, diameter: 13 3/4 inches, (damaged and stapled), Japan and China, early 19th century.

[100/125]

[Illustrated]

69. FOUR PIECES OF ORIENTAL EXPORT PORCELAIN including a handled teacup, handleless tea bowl, a deep saucer, and a small tea tray with similar floral designs in black and gold, (imperfections), China, early 19th century.

[100/125]

70. PEWTER TAVERN MUG, quart, U-shaped, marked "James Yates", England, circa 1830.

75 [100/150]



[76]

71. PEWTER OIL LAMP, spouted font on tall pedestal base, European, late 18th century.

205 [100/150]

72. BRITANNIA METAL COVERED TUREEN, elliptical with Victorian-style handles and feet, marked "Willm s Burton 39 Oxford St.", length: 14 3/4 inches, width: 10 inches, height: 10 1/2 inches, England, mid 19th century.

75 [125/175]

73. TWO PEWTER METRIC MEASURES, half litre and two deci-litre capacity, marked "J.C. Hempenius, Leeuwarden", European, mid 19th century.

276 [125/175]

74. TWO PEWTER COLANDERS, one made from broth bowl, with piercing added, diameter: 6 1/4 inches, the other with loop handles, diameter: 11 5/8 inches, (base missing), English, mid 18th century.

285 [250/325]

75. FIVE PEWTER TAVERN MUGS, half pint with concave sides and glass bottoms, (two are cracked), England, mid 19th century.

102 [200/250]

76. PEWTER BALUSTER TAVERN MEASURE, pint capacity, unmarked, attributed to Boardman, New York, (foot molding missing), circa 1830.

150 [150/200]
[Illustrated]

77. SIX PEWTER PLATES, all having initials "A.E.M." engraved on the rim, maker's mark on reverse incorporating initials "G.W.", diameter: 9 inches, European, mid 18th century.

350 [350/450]

78. PEWTER TEAPOT, bulbous form, marked "S. Simpson", height: 8 1/2 inches, (damage to base), Connecticut, circa 1835.

50 [200/250]



[79]

83. PEWTER WINE CAN, hexagonal body, with riggle work engraving of tulips and a heart, screw-on cover having large carrying ring, height: 17 1/4 inches, Swiss, 18th century.

675 [300/400]
[Illustrated]

84. PEWTER TEAPOT, modified lighthouse form, (some damage), American, circa 1840.

75 [100/150]

85. PEWTER TANKARD, cylindrical body on dome base, flattened dome lid with ball thumb piece, strap handle, initials "G F H" and date "1820" engraved on lid, Germany, early 19th century.

325 [150/200]
[Illustrated]

86. PEWTER DISH, initials "I.L.W." engraved on rim, maker's mark incorporating initials "P.G.", European, mid 18th century.

150 [150/175]

79. PEWTER TAVERN MUG WITH SIDE SPOUT, tulip form, with single curve handle having bud terminal, owner and tavern name engraved on front, maker's mark inside bottom "Edward Quick", (crack near handle), England, circa 1750.

600 [250/350]
[Illustrated]

80. PEWTER SCONCE LAMP with camphene burner, (small repair to base), American, circa 1850.

200 [175/225]
[Illustrated]

81. EIGHTEEN PEWTER SPOONS, British and European, 18th and 19th century.

200 [200/300]

82. TWO PEWTER TAVERN MUGS, pint capacity, with concave sides, one marked "Wood & Sons, Glasgow", British, mid 19th century.

125 [100/150]



[80]



[83]

87. SET OF FOUR PEWTER DEEP PLATES, maker's mark "S. Rothhan", diameter: 9 1/4 inches, German, early 19th century.

375

[225/300]

88. PEWTER TEA KETTLE with swing handle and wooden grip, maker's mark incorporating initials "J.G.", (some repairs and damage), European, late 18th century.

150

[150/250]
[Illustrated]

89. SET OF THREE PEWTER PLATES, maker's mark incorporating the initials "I.B. 1763", diameter: 9 1/8 inches, European, circa 1775.

200

[150/225]

90. PEWTER MEASURE, baluster form with lid, twin acorn thumb rest, and strap handle, maker A. Carter, Channel Islands, Guernsey-type, height: 11 inches, (repaired upper handle, some dents), British, late 18th century.

450

[600/750]



[85]



[88]



[91]

91. PEWTER TOBACCO JAR, cylindrical with urn-form finial on lid, British, early 19th century.

[125/175]

225 [Illustrated]



[94]

92. PEWTER INFUSION POT, modified tulip form, single curve handle, British, early 19th century.

[175/250]

50

93. SET OF THREE PEWTER PLATES, flat rim, maker Christopher Baldwin, diameter: 9 1/4 inches, English, circa 1725.

[250/325]

20

94. PEWTER WHALE OIL LAMP, saucer base, lemon font, unmarked, Boston area, circa 1840.

[125/175]

175

[Illustrated]

95. PEWTER COVERED TUREEN, repousse panels, foliate handles, pineapple finial, height: 12 inches, Continental, early 19th century.

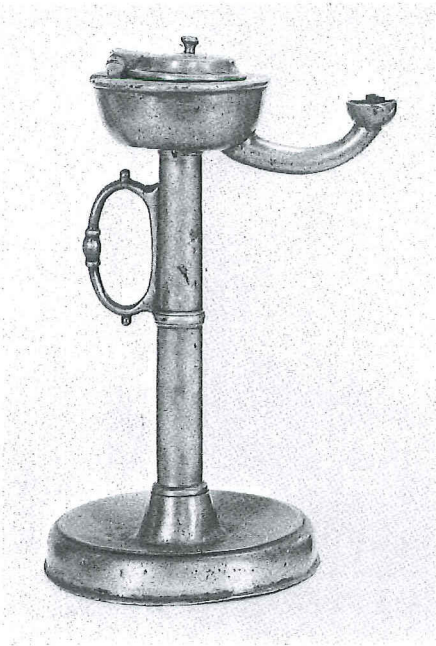
[350/500]

575

[Illustrated]



[95]



[98]

96. PEWTER BASIN, maker's mark illegible, diameter: 13 inches, English, mid 18th century.

300 [100/150]

97. PEWTER MEASURE, baluster form with lid, twin cusp thumb rest, strap handle, maker A. Carter, Channel Islands, Guernsey-type, height: 8 3/4 inches, (dented), British, late 18th century.

425 [450/600]

98. PEWTER OIL LAMP with spouted font on tall pedestal base, height: 9 inches, European, late 18th century.

325 [125/175]
[Illustrated]

99. PEWTER TANKARD, cylindrical form on dome base, flattened dome cover with ball thumb piece, strap handle, initialed "F.G.L." and "1800" engraved on lid, (repair to handle, crack to base), German, circa 1800.

275 [100/150]

100. PEWTER TAVERN MUG, quart capacity, tapered drum form, "W. Browning Torquay" engraved on front, English, mid 19th century.

150 [125/150]

101. TWO PEWTER WAVY-EDGE DISHES, diameters: 9 3/4 and 13 inches, (repair to rim of larger dish), mid European, early 19th century.

110 [150/175]

102. TWO PEWTER DISHES, diameters: 13 1/2 and 13 1/4 inches, (one with pitting and damage), British, mid 18th century.

50 [175/225]

103. PEWTER TAVERN MUG, pint capacity, cylindrical form on molded foot, fine handle with bird's beak terminal, maker's mark "D. Scouler", Scottish, circa 1800.

300 [125/150]

104. THREE PEWTER MUGS, pint capacity, (two have replaced bottoms), English, mid 19th century.

110 [100/125]



[107]



[112]

109. TWO PEWTER MUGS, one pint cylindrical body on molded base, maker W. Scott Glasgow, (repairs to one side), Scottish, the other a half pint footed mug, (bent base), British, circa 1800.

110 [125/175]

110. TWO PIECES OF PEWTER, one cylindrical ink stand with plate base, diameter of base: 7 3/4 inches, British, mid 19th century, and a cylindrical mug, possibly American, mid 19th century.

80 [100/150]

111. PEWTER COFFEE URN, pear-shaped with dome lid, wooden finial, mounted on three scrolled legs with wooden feet, height: 14 inches, (brass spigot incomplete), Dutch, late 18th century.

150 [150/250]

112. PEWTER FIVE-LOBED WAVY EDGE DISH with pierced hearts and star design, used as a strainer, maker Richard Yates, British, late 18th century.

600 [400/500]

105. TWO PIECES OF PEWTER, a castor frame for five bottles, (one bottle missing and some damage), and a lidded shaving soap box, (with broken hinge), American, mid 19th century.

110 [100/150]

106. PEWTER PORRINGER, crown handle, with cast initials "S. G.", bowl diameter: 4 1/2 inches, American, circa 1800.

250 [250/300]

107. PEWTER LIDDED TANKAND, tapered drum form with dome lid, elaborate shell thumb rest, double C-scroll handle, British, early 19th century.

375 [400/500] [Illustrated]

108. PEWTER BASIN, hammered booge, marked "Townsend & Compton" on bottom, diameter: 13 inches, English, circa 1800.

320 [225/300]



[113]



[118]

113. PEWTER WINE CAN, hexagonal body with riggle work engraving of tulips and a heart, screw-on cover, with large carrying ring, height: 13 1/2 inches, Swiss, late 18th century.

625 [250/350]
[Illustrated]

114. PEWTER MEASURE, baluster form, with flat lid, twin acorn thumb rest, strap handle, Channel Island, Guernsey-style, (base dented), British, late 18th century.

500 [350/450]

115. PEWTER TAVERN MEASURE, baluster form with domed lid, shell thumb piece, half pint capacity, Glasgow, mid 19th century.

120 [125/150]

116. TWO PEWTER COMMUNE POTS, one with diameter: 12 1/2 inches, and height: 8 1/2 inches, the other with diameter: 11 3/4 inches, height: 8 inches, (the latter with large repair), British, circa 1800.

200 [125/175]

117. PEWTER WINE FLAGON, bulbous form with flattened dome lid, shell thumb rest, height: 9 1/4 inches, Flemish, circa 1800.

326 [150/250]

118. PEWTER CIDER PITCHER, bulbous form, maker's mark "Boardman & Hart, New York", (damage to spout, and dented), American, circa 1830.

300 [250/350]
[Illustrated]

119. PEWTER LIDDED TANKARD, quart capacity, cylindrical body, double domed lid, chair back thumb rest, (replaced base, repairs to handle junctions, and silver plated).

80 [150/250]

120. TWO PEWTER MUGS, one pint capacity, with side mounted spout, the other half pint, British, circa 1830.

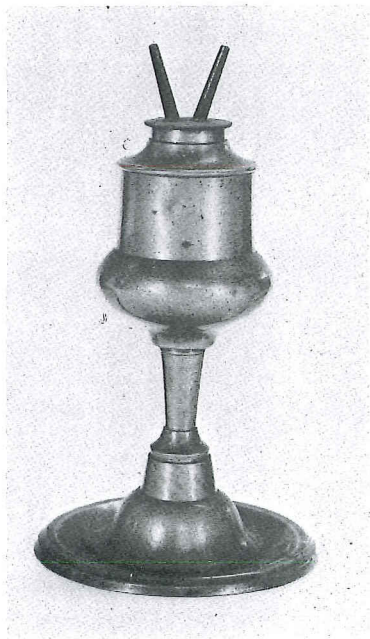
120 [125/175]

121. PEWTER BASIN, unmarked, diameter: 10 1/2 inches, (some dents), American or English, circa 1800.

120 [100/125]



[122]



[126]

122. TWO PEWTER SPOON STANDS, one with figure finial, the other with cup-shape finial, Austrian or Swiss, circa 1800.

275 [200/300]
[Illustrated]

123. PEWTER DISH with multiple reeded rim, hallmarked on rim, diameter: 18 inches, (repairs on rim), British, circa 1690.

170 [125/175]

124. PEWTER DISH, diameter: 16 1/2 inches, (considerable oxidation, and a hole in rim), British, 18th century.

40 [100/125]

125. PEWTER DISH RING, turned and beaded body standing on three cyma curve legs with wooden feet, probably English, circa 1800.

00 [125/175]

126. PEWTER LAMP with camphene burner, on pedestal base, American, circa 1850.

160 [125/175]
[Illustrated]

127. PEWTER TAVERN MUG, quart capacity, tapered drum form, with inscription, name, place, and date "26 June 1821" engraved on front, English.

200 [125/175]

128. PEWTER TAPPIT HEN WINE MEASURE, height: 11 inches, Scottish, late 18th century.

600 [500/700]
[Illustrated]

129. PEWTER QUART TANKARD, drum-shaped body with double domed lid, ram's horn thumb piece, single curved handle, and barrel terminal, silver plated, Boston area, late 18th century.

1900 [1000/1250]
[Illustrated]

130. PEWTER DISH, flat rim, maker's mark "John Home", diameter: 16 1/2 inches, (dented), English, mid 18th century.

215 [100/150]



[128]



[129]

THE FOLLOWING NINE LOTS (131-139) ARE PORTIONS OF A SINGLE SERVICE OF PEWTER FLATWARE:

131. SIX PEWTER PLATES, flat rim, maker's mark "Samuel Ellis", engraved on rim, with giraffe issuing from a coronet, diameter: 9 3/4 inches, English, mid 18th century.

750 [700/900]

132. SIX PEWTER PLATES, diameter: 9 3/4 inches, en suite with preceding lot.

600 [700/900]

133. SIX PEWTER PLATES, diameter: 9 3/4 inches, en suite with preceding lot.

700 [700/900]

134. FOUR PEWTER PLATES, diameter: 9 3/4 inches, en suite with preceding lot.

425 [450/550]

135. SIX PEWTER SOUP PLATES, diameter: 9 5/8 inches, en suite with preceding lot.

700 [700/900]
[Illustrated]



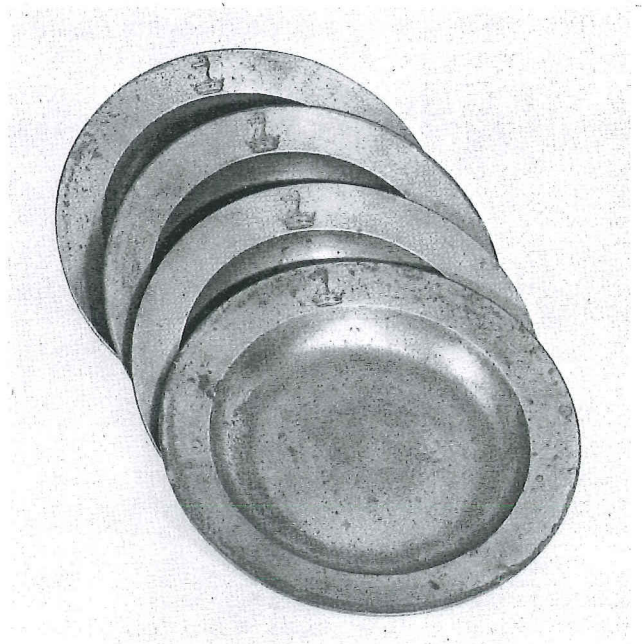
[135]

136. FOUR PEWTER SOUP PLATES, diameter: 9 5/8 inches, en suite with preceding lot.

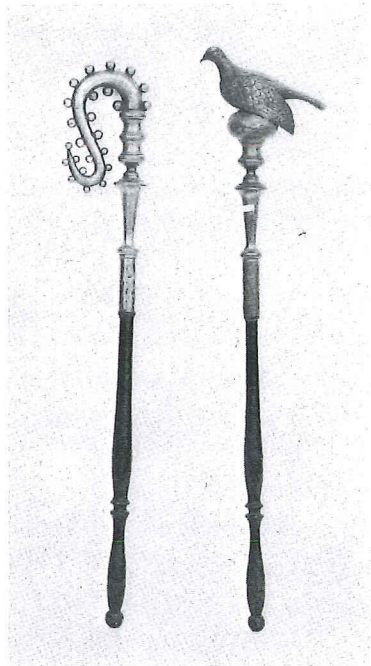
425 [450/550]
[Illustrated]

137. PEWTER SOUP PLATE, diameter: 9 5/8 inches, en suite with preceding lot.

90 [100/125]



[136]



[146]

138. TWO PEWTER DISHES, diameter: 15 inches, en suite with preceding lot.

375 [350/450]

139. PEWTER DEEP DISH, diameter: 13 1/8 inches, en suite with preceding lot.

170 [150/200]

140. PEWTER HANGING SHRINE LAMP of bulbous form with three cyma curved handles suspended from a pewter bell-shape hanger on iron chain, incorporating three pewter knob decorations, Continental, late 18th century.

70 [150/250]

141. PEWTER DISH, maker's mark of Robert Bush Bristol, diameter: 14 3/4 inches, English, late 18th century.

145 [100/150]

142. PEWTER DISH, indistinct marks, diameter: 14 3/4 inches, (considerable oxidation and small repair to rim), English, mid 18th century.

50 [100/125]

143. PEWTER COVERED TUREEN, basin form with rococo handles, low dome cover, (replaced wood finial), French or German, late 18th century.

240 [250/350]

144. TWO PIECES OF PEWTER, chamber stick with beaded decoration, marked "James Dixon & Sons", British, circa 1850, and a time lamp on tall pedestal base with two burners, (glass bulb and pewter strap missing), German, mid 18th century.

100 [150/250]

145. PEWTER DISH with multiple reeded rim, hallmarks on rim, diameter: 15 inches, (rim cracks and two small holes in bottom), English, circa 1690.

160 [150/250]

146. THREE BRITANNIA METAL FRIENDLY SOCIETY MACES with wooden handles, tops are in forms of dove, stylized shepherd's staff, and urn surmounted by Maltese cross, (damage), British, mid 19th century.

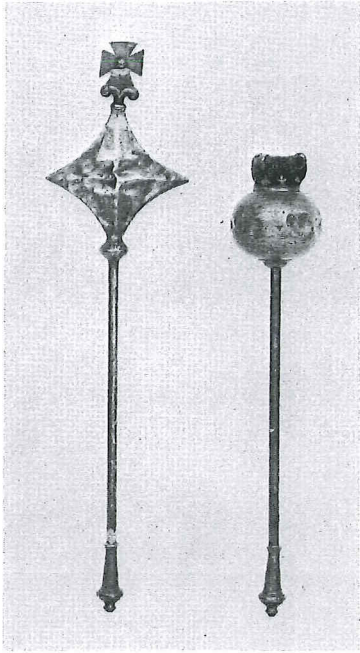
500 [450/600] [Illustrated]

147. THREE BRITANNIA METAL FRIENDLY SOCIETY MACES with wooden handles (one missing), tops are in forms of dove, and two crowns with fabric insert, surmounting urns, (damage), British, mid 19th century.

175 [450/600]



[149]



[154]

[172]

148. PEWTER FLAGON, cylindrical form, flattened dome cover, ball thumb piece, strap handle with cast decoration, maker's mark on handle incorporating initials I.G.B., "Hans H. Stein 1841" engraved on lid, German, 19th century.

325 [200/300]

149. PEWTER COLANDER, with two swivel handles on boldly curved base, mark of James Spackman, diameter: 11 3/4 inches, British, circa 1740.

625 [300/500]
[Illustrated]

150. PEWTER MEASURE, baluster form, flat top, double acorn thumb rest, strap handle, A. Carter, Channel Islands, Guernsey-form, (damage to lower handle terminal).

500 [300/400]

151. PEWTER FLAGON, tapering cylindrical form, dome lid with upright thumb piece, strap handle, Continental, circa 1800.

150 [250/300]

152. PEWTER WINE MEASURE, cylindrical metric form, lidded, double litre capacity, French, early 19th century.

250 [150/250]

153. PEWTER CHAMBER POT, bulbous form, strap handle, Continental, circa 1800.

225 [100/125]

154. THREE BRITANNIA METAL FRIENDLY SOCIETY MACES, tops are urn, star, and Maltese cross, crowns, (damage), British, mid 19th century.

50 [300/500]
[Illustrated]

155. FOUR BRITANNIA METAL FRIENDLY SOCIETY MACES, tops are combinations of dove, stars, shepherd staffs, and crosses, (damage), British, mid 19th century.

75 [450/600]

156. TWO BRITANNIA METAL FRIENDLY SOCIETY MACES, tops are multiple star and shepherd staff, (damage), British, mid 19th century.

125 [300/500]

157. PEWTER TAVERN MEASURE, lidded, pint capacity, maker's mark "J. Moyes Edinr" cast into lid, (repairs to handle terminal and lid), Scottish, mid 19th century.

50 [150/200]

158. PEWTER FLAGON, bulbous body, flat dome lid, (replaced thumb piece and repair to lower handle terminal), Flemish, circa 1800.

50 [100/125]

159. PEWTER CHOCOLATE POT, rococo form, pear shaped body, strap handle, (repairs), Continental, mid 18th century.

160 [100/125]

160. PEWTER TANKARD, drum shape on dome base, flat dome lid and ball thumb rest, "ARH 1829" engraved on lid, riggle decoration of flowers, birds, etc. and inscription, (large crack), German, circa 1829.

350 [100/150]

161. PEWTER COVERED TUREEN, urn shaped, two swivel handles, (some dents), late 18th century.

375 [250/350]
[Illustrated]

162. PEWTER TOBACCO JAR, drum-shape, double dome lid, maker's mark "Yates" inside bottom, English, late 18th century.

150 [125/175]

163. PEWTER WINE MEASURE, cylindrical metric form, lidded, double liter capacity, (repairs to lid and handle), French, early 19th century.

150 [125/175]

164. PEWTER WINE MEASURE, cylindrical metric form, lidded, liter capacity, (repairs to lid and handle), French, early 19th century.

150 [100/150]

165. PEWTER WINE MEASURE, cylindrical metric form, lidded, demi-liter capacity, French, early 19th century.

150 [150/200]

166. PEWTER WINE MEASURE, cylindrical metric form, lidded, double deci-liter, French, early 19th century.

150 [100/150]

167. PEWTER DISH, flat rim, diameter: 15 inches, maker Samuel Ellis, English, mid 18th century.

135 [100/150]

168. TWO PEWTER PLATES, flat rim, diameter: 9 1/4 inches, English, mid 18th century.

110 [100/150]

169. THREE PEWTER PLATES, diameters: 8 1/4 and 8 7/8 inches, (one cracked, one repaired), English, late 18th century.

50 [100/150]

170. TWO PEWTER PLATES, diameters: 8 3/8 and 9 3/4 inches, English, mid 18th century.

110 [125/150]

171. TWO PEWTER PLATES, diameters: 8 7/8 and 8 5/8 inches, one with "1823" engraved on rim, and maker's mark "F.M.", the other unmarked, European, early 19th century.

130 [100/125]

172. THREE BRITANNIA METAL FRIENDLY SOCIETY MACES, urn, crown, and star (damage), two with maker's mark "Wolstenholm", British, mid 19th century.

100 [300/500]
[Illustrated]

173. TWO BRITANNIA METAL FRIENDLY SOCIETY MACES, tops are shepherd's staff and stylized cross, British, mid 19th century.

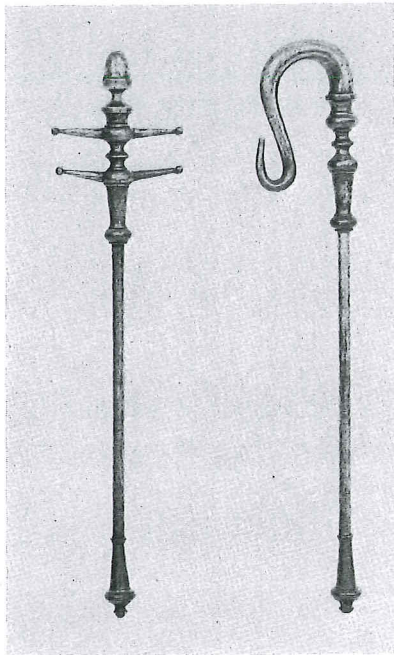
100 [200/300]
[Illustrated]

174. BRITANNIA METAL HOT WATER WELL AND TREE PLATTER, oval with gadrooned border, mounted on four wooden feet, maker's mark "James Dixon & Sons", English, circa 1840.

175 [200/250]



[161]



[173]

[173]

175. PEWTER OVAL HOT WATER DISH, maker Joseph Spackman "Patent oval", (one handle missing), English, late 18th century.

25 [125/175]

176. PEWTER WINE MEASURE, cylindrical metric form, lidded, deci-liter capacity, French, early 19th century.

100 [100/125]

177. PEWTER DISH, diameter: 15 inches, English, mid 18th century.

160 [100/150]

178. PEWTER DISH, diameter: 18 inches, English, mid 18th century.

200 [150/175]

179. PEWTER DISH, diameter: 16 1/2 inches, (some pitting), English, mid 18th century.

120 [100/125]

180. TWO PEWTER MEASURES, one lidded, J. Moyes Edinburg, (repairs to handle), together with a Victorian 1/2 gill measure, British, mid 19th century.

140 [100/150]

181. THREE PEWTER PLATES, five lobed wavy edge, diameter: 8 1/2 inches, European, early 19th century.

65 [125/175]

182. TWO PEWTER PLATES, one five lobed wavy edge, diameter: 9 3/4 inches, German, early 19th century, together with a Swiss plate, rococo rim, diameter: 8 1/4 inches.

40 [100/125]

183. THREE PEWTER DISHES, all with shaped edge, one with embossed decoration, (one with large repair), European, 18th century.

160 [100/125]

184. TWO PIECES OF BRITANNIA METAL including hot water plate marked "J. Vickers" together with a basin, gadrooned edge, English, mid 19th century.

85 [100/125]

185. TWO PIECES OF PEWTER including scalloped edge oval dish, rococo-style handled bowl dated "1785", European, late 18th century.

230 [125/175]

186. TWO PIECES OF PEWTER including confectionary mold in three parts, English, mid 19th century, together with a hanging salt box, European, late 18th century.

230 [150/225]

187. TWO PEWTER DISHES, diameters: 15 and 16 1/2 inches, (damage to both), English, 18th century.

120 [125/175]

188. TWO PEWTER DISHES, diameter: 16 1/2 inches, (pitted, dents), English, 18th century.

180 [175/250]

189. TWO PEWTER DISHES, diameters: 13 1/4 and 14 inches, (severe pitting on both), English, 18th century.

120 [100/150]

190. SIX PIECES OF PEWTER including three pap boats, two gravy ladles marked "Ashberrys", and a caster, British, 19th century.

170 [125/200]

191. PEWTER PLATE, diameter: 10 3/4 inches, semi-broad rim, European, late 17th or early 18th century.

65 [150/250]

192. PEWTER BED WARMING PAN, screw cap for filling, maker James Wright Edinburg, circa 1800.

200 [125/175]

193. TWO PIECES OF PEWTER including bed pan, makers Townsend & Compton, English, late 18th century, together with a shallow bowl with rope design handles, European, early 19th century.

150 [125/150]

194. LARGE PEWTER BOWL on tall pedestal base, maker's mark "BGF", height: 11 1/2 inches, diameter: 11 inches, (some damage), Continental, early 19th century.

25 [150/200]

195. LARGE PEWTER CHALICE FORM with cover, embossed heraldic shield on side, (some damage), European, late 18th century.

25 [200/250]

196. TWO PIECES OF PEWTER, food cannister with ring handle, together with a double bowl serving piece with handle, European, late 18th century.

75 [150/200]

197. TWO PEWTER TAVERN MUGS, quart capacity, one with concave sides, English, mid 19th century, the other Scottish with mark of Robert Whyte, (latter has repairs).

175 [200/250]

198. THREE PEWTER MEASURES, one French demi-liter cylindrical form, one 1/2 gill lidded Scottish form (damage to base), and lidless French 18th century form, (several repairs).

100 [125/175]

199. PAIR OF BRITANNIA METAL SCONCE LAMPS with whale oil burners, American, 20th century.

110 [100/150]

200. BRITANNIA METAL DOUBLE BULL'S-EYE LAMP with whale oil burner, together with three bull's-eye lenses, (all missing tabs), American, late 19th century.

190 [200/250]

201. FOUR PIECE LOT including pewter German flagon dated 1851 (repairs), pewter syringe, and two Britannia metal wine funnels, (one damaged).

180 [125/150]

202. THREE PEWTER COFFEE POTS with wooden handles, (one has replaced copper bottom, the other handle repaired), European, mid 19th century.

25 [150/200]

203. THREE BRITANNIA METAL PITCHERS, two marked "James Dixon and Sons", (dented and repaired), English, late 19th century.

65 [75/125]

204. PEWTER TEAPOT, rococo-style, pear shaped with dragon head spout, European, 18th century.

150 [150/200]

205. FOUR BRITANNIA METAL TEAPOTS, two marked "Dixon & Sons", one marked "Shaw & Fisher", one unmarked, (damage), English, mid 19th century.

55 [150/200]

206. LOT OF PEWTER, fifteen pieces total, miscellaneous, covers, porringer.

85 [50/75]

207. THREE PIECE PEWTER LOT, Britannia metal oval hot water platter on four bull feet, 18th century pewter side plate, and a Britannia dish cover, (damage).

55 [100/125]