

ESR

SALE NUMBER 4014

# RENAISSANCE AND LATER WORKS OF ART TEXTILES, TAPESTRIES, PEWTER FURNITURE AND DECORATIONS

The property of Various Owners including  
Property from an Eastern Museum  
Property formerly in the Collection of Ailsa Mellon Bruce  
Property formerly in the Collection of Baroness Cassel van Doorn  
Property formerly in the Collection of Mr. Samuel Yellin, Philadelphia,  
and Mr. Richard Beatty Mellon, Pittsburgh  
*and*  
Property of the Boston Athenaeum on extended loan to  
the Museum of Fine Arts, Boston

## EXHIBITION

From Friday, June 17 to 5 p.m. Thursday, June 23, 1977

Please note:

Tapestries will not be on exhibition before Wednesday, June 22, 1977

Galleries open 10 a.m. to 5 p.m. Monday through Friday <i>Closed Saturday and Sunday during June</i>
---

## PUBLIC AUCTION

Friday, June 24, 1977 at 10:15 a.m. and 2 p.m.

## SOTHEBY PARKE BERNET INC.

980 Madison Avenue (76th-77th Streets)  
New York 10021—(212) 472-3400  
Cable: Parkgal, New York

*Recorded Announcement of Current Sales and Exhibitions, 24 hours a day: 212-472-3555*

Cover Illustration: Detail of lot 56

## AFTERNOON SESSION

Friday • June 24, 1977 at 2 p.m.

Catalogue Numbers 164 - 379

## PEWTER

Various Owners

## ■ 164 GROUP OF ENGLISH PEWTER CIRCA 1800-25

A baluster with twin bud finial, by *T. and W. Willsbire, Bristol*, a circular plate, by *John Townsend, London*, and two pint mugs.

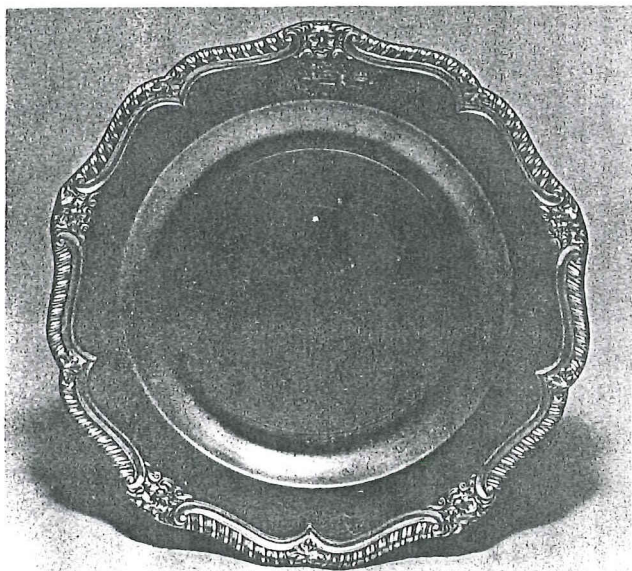
*Height of baluster: 8½ inches (21.5 cm.)*

## ■ 165 PEWTER MUG AND A MEASURE

IRISH, EARLY 19TH CENTURY

The mug with numerous pub marks, the measure by *Austen & Son, Cork*. Together with an Irish half noggin measure; an Irish baluster mug, *unmarked*; three French measures, *late 19th century* and a Continental measure, *c. 1900*. 8 pieces.

*Height 4½ inches (11.5 cm.) and 5⅞ inches (15 cm.)*



[ 166 ]

Property from the Collection of Ailsa Mellon Bruce

## ■ 166 FINE SET OF TWELVE ENGLISH PEWTER PLATES

HENRY MAXTED, LONDON, C. 1745

The shaped gadrooned rims decorated with satyr masks, and foliage at intervals, the borders engraved with armorials in rococo cartouches.

*Diameters 9¾ inches (24.5 cm.)*

*See illustration of one*

## ■ 167 TEN ENGLISH PEWTER PLATES

HENRY MAXTED, LONDON, C. 1745

Similar to the preceding lot. *Diameters 9¾ inches (24.5 cm.)*

## ■ 168 FINE SET OF TWELVE ENGLISH PEWTER PLATES

HENRY MAXTED, LONDON, C. 1745

Similar to the preceding lots. *Diameters 9¾ inches (24.5 cm.)*

## Other Properties

## ■ 169 EIGHT PEWTER PLATES, A CHARGER AND A BASIN

The basin engraved with a name and the date 1842, *German or Scandinavian*; one plate by *Richard Norfolk, London, mid-18th Century*.

*Diameter 9⅜ inches (24 cm.) to 14¾ inches (37.5 cm.)*

## ■ 170 PAIR OF CONTINENTAL PEWTER PITCHERS

CIRCA 1800

Of barrel shape with scroll handles, stamped St. V No. 50 and St. A No. 2. Together with a pair of circular plates, *circa 1800*, later engraved with scenes relating to the French Revolution. 4 pieces.

*Heights 6 inches (15 cm.)*

## ■ 171 GERMAN PEWTER TANKARD

JOHANN-GEORG MARX, NUREMBERG, 18TH CENTURY

Of cylindrical form with domed cover and base, the former inset with a marriage medallion.

*Height 9¾ inches (25 cm.)*

*See illustration*



[ 171 ]

■ 172 DUTCH PEWTER COFFEE URN

MID-18TH CENTURY

Of pear shape, with shellwork tap and three faceted scroll feet with wood terminals, *struck with an angel touch*.

Height 16 inches (41 cm.)



[ 173 ]

■ 176 DUTCH PEWTER FLAGON

THE HAGUE, MID-18TH CENTURY

Of pear shape, short spout and slightly domed cover.

Height 10½ inches (27 cm.)

■ 177 CONTINENTAL PEWTER FLAGON

MID-18TH CENTURY

Of pear shape, with short spout and shallow domed cover, patera-shaped thumbpiece, *struck on the inside with an angel touch*.

Height 10 inches (25.5 cm.)



[ 178 ]

■ 173 GERMAN PEWTER LARGE AND SMALL COFFEE POTS

MID-18TH CENTURY

Of spirally fluted pear shape with side hinged cover, *both marked inside*. Together with a *bombé* oval Sugar Box similarly decorated. 3 pieces.

Heights 10¾ and 6 inches (27 and 15 cm.)

See illustration of larger pot

■ 174 WESTERWALD STONEWARE AND PEWTER TANKARD AND A PEWTER TOBACCO JAR

18TH CENTURY

The tankard incised with blossoms and scrolling foliage, initialled pewter cover; the cylindrical jar with domed cover engraved with the name Andreas Seyffert 1731, *probably Dutch, both unmarked*.

Heights 10¼ and 5¼ inches (26 and 13.5 cm.)

■ 175 THREE CONTINENTAL PEWTER ARTICLES

LATE 18TH/EARLY 19TH CENTURY

A compressed spherical teapot, *maker's mark J.C. Klockner below a cartouche with figure of Justice*; a bowl with dolphin handle, *maker's mark P.W. above three savages (Hintze VII no. 599)*; and a circular plate engraved with a name and the date 1790, *probably Bremen*.

Height of teapot 4½ inches (10.5 cm.)

■ 178 GERMAN PEWTER TANKARD

LANDSHUT, C. 1600

Embossed with a central band of four Biblical scenes, the cover with masks and strapwork, on three winged cherub head feet.

Height 8½ inches (24 cm.)

See illustration

■ 178A FRENCH PEWTER TANKARD

JOHANN HEINRICH ISENHEIM III, STRASBOURG, C. 1740

Of narrow cylindrical form, with flared base, initialled flat cover, scroll handle.

Height 9¾ inches (24.7 cm.)

■ 179 SWISS PEWTER CHARGER

JOHANNES KÜPFER., BERNE, MID-18TH CENTURY

Engraved with the Arms of Geneva, supported by a crowned eagle with spread wings and with a border of trefoil arches.

Diameter 13¾ inches (34.7 cm.)

See illustration

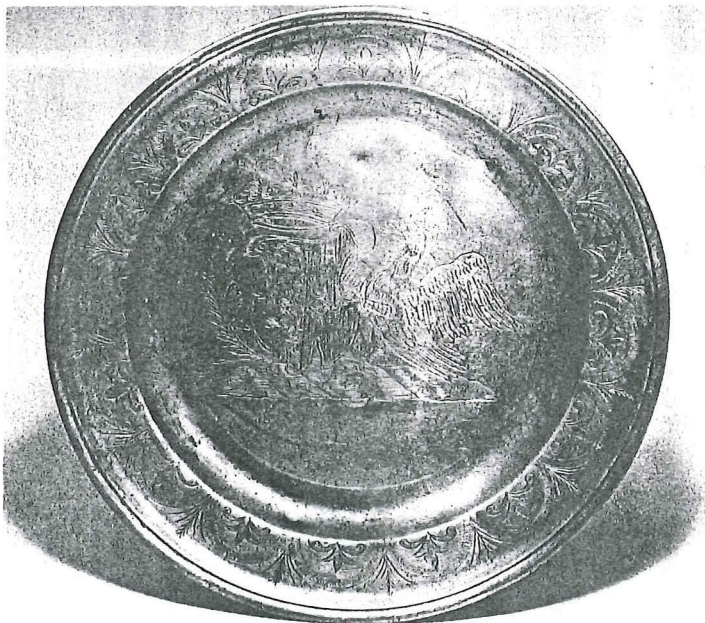


[ 180 ]

■ 180 CONTINENTAL PEWTER LARGE FLAGON  
SOUTH GERMAN, 18TH CENTURY

Of pear shape, the cover inset with a medallion of Tobias and the Angel, *maker's initials I.L.I. below a displayed eagle* (Hintze VII 630).  
Height: 13¼ inches (35 cm.)

See illustration



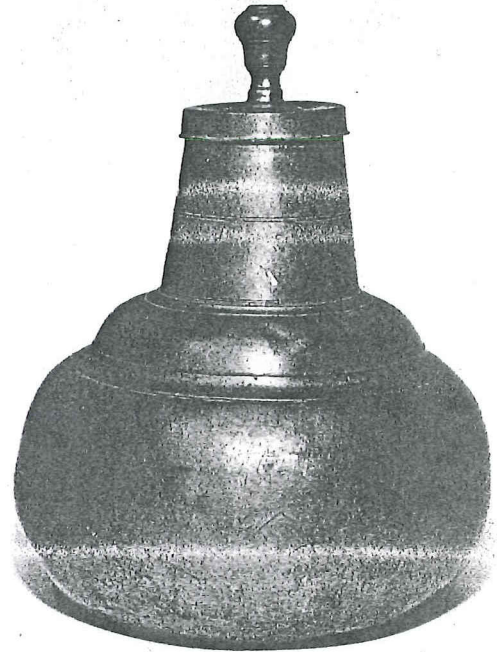
[ 179 ]

■ 181 CONTINENTAL PEWTER FLAGON  
GERMAN OR AUSTRIAN, 18TH CENTURY

Cylindrical form, with dome cover, ball finial and faceted spout, engraved with names and the date 1783, *marked with an angel touch inside*.  
Height: 10¼ inches (26 cm.)

■ 182 GERMAN PEWTER EPERGNE

The shaped rectangular base raised on four forked scroll feet, all centered by a twisted column supporting a fluted detachable bowl and four shell-shaped dishes, *bearing maker's mark of Joseph Schipsinder of Carlsbadd*.  
Length: 10 inches (25 cm.)



[ 183 ]

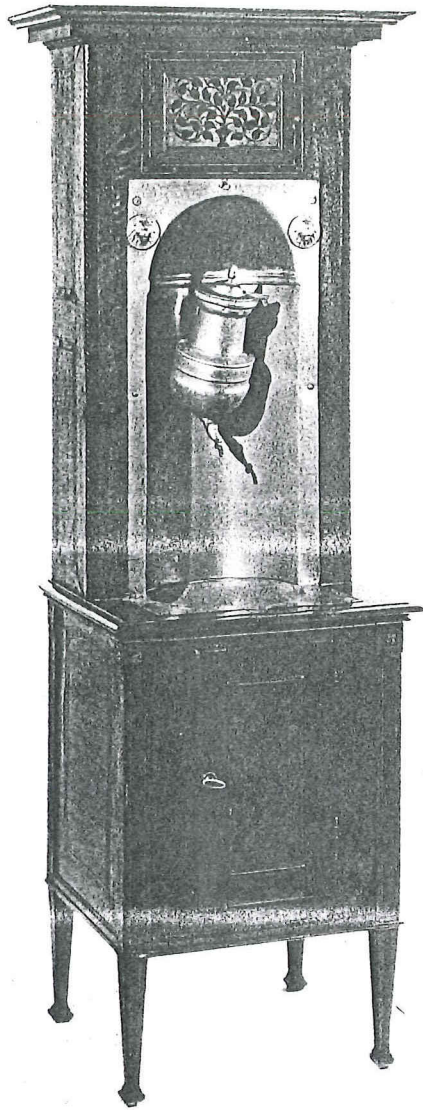
■ 183 LARGE AND UNUSUAL PEWTER CHURN  
FRENCH OR SWISS, EARLY 18TH CENTURY

Of gourd shape the cover mounted inside with a stirring rod with a pear-shaped finial, *maker's mark IG 171? below a hammer and crown*.  
Height: 15½ inches (39.5 cm.)

See illustration

■ 184 CONTINENTAL PEWTER LARGE FLASK AND A LAMB-FORM MOLD

The upright rectangular flask with a screw-on cap and two hinged bail handles; the mold modelled as a lying lamb with raised head.  
Height of flask: 12¼ inches (31 cm.)  
Length of mold: 14 inches (36 cm.)



[ 185 ]

■ 185 GERMAN PEWTER LAVABO AND FOUNTAIN IN WALNUT PARQUETRY AND MARQUETRY CUPBOARD  
LAST QUARTER 18TH CENTURY

The upper section with a molded cornice above the lavabo and fountain above a cupboard on square tapered legs ending in block toes.

Height 5 feet 7 inches (1.70 m.); width 20 inches (51 cm.);  
depth 16½ inches (42 cm.)

See illustration



[ 186 ]

■ 186 GERMAN PEWTER WHALE OIL LAMP  
THIRD QUARTER 18TH CENTURY

Formed as a spherical font with duck-head nozzle and screw-in female figure finial, on a baluster stem with spreading base, all decorated with spiralled flutes.

Height 10¾ inches (27.3 cm.)

See illustration



[ 187 ]

■ 187 PEWTER OIL CLOCK  
PROBABLY GERMAN, C. 1800

With saucer-shaped base, slender cylindrical stem, applied with a covered wick compartment, and all surmounted by a fluted glass chamber reservoir enclosed by pewter straps, one inscribed with Roman numerals VIII to VII, unmarked.

Height: 13 inches (33 cm.)

See illustration

■ 188 SWISS PEWTER FLAGON 18TH CENTURY

The cylindrical body applied with an initialed shield, with covered faceted spout and slip-lock cover with large ring finial, maker's mark H.H.M. below a coronet.

Height: 10¼ inches (26 cm.)

■ 189 THREE PEWTER ARTICLES

A Dutch pear-shaped coffee urn on three faceted scroll feet, etched with figures and armorials surrounded by foliage, lacks tap; a fluted teapot of melon shape, by Dixon, Sheffield, mid-19th Century, and a Dutch trumpet-shaped beaker.

Heights 5½ to 13 inches (14 to 33 cm.)

■ 190 GROUP OF CONTINENTAL PEWTER

A German cylindrical coffee pot, spirally fluted, with straight turned wood handle, *circa* 1800; a pear-shaped coffee pot on three scroll feet; two small coffee pots of inverted pear shape, all spirally fluted.

Heights 5¾ to 13 inches (14.5 to 33 cm.)



[ 190A ]

■ 190A GERMAN PEWTER TANKARD

MAKER'S MARK H.M. (HINTZE, NO. 1122)  
HAMMELBURG, 17TH CENTURY

Of narrow cylindrical form, decorated with tooled bandings, with ball thumbpiece, and three ball feet.

Height 10½ inches (26.8 cm.)

See illustration

■ 191 TWO CONTINENTAL PEWTER TANKARDS

A narrow cylindrical tankard engraved with initials and the date 1799, by *Johann Michael Schaefer I, Ansbach, late 18th Century*; and another of baluster form with shell thumbpiece, *probably Flemish, c. 1800*.

Heights 10¾ inches and 10¼ inches (27 and 26 cm.)

■ 192 ENGLISH PEWTER TANKARD

EARLY 18TH CENTURY

Of cylindrical form with molded foot, scroll handle and volute thumbpiece, flat domed cover, *unmarked*.

Height 7½ inches (19 cm.)

■ 193 BELGIAN PEWTER MEASURE

P. TASSAERT, ANTWERP, MID-19TH CENTURY

Of litre size, cylindrical, with initialed flat cover.

Height 8¼ inches (21 cm.)

■ 194 TWO CONTINENTAL PEWTER COVERED PITCHERS

PROBABLY BELGIAN, LATE 18TH CENTURY

Of bulbous form with incurved necks and flat covers with twin-acorn thumbpieces, *both marked with a crowned cross*.

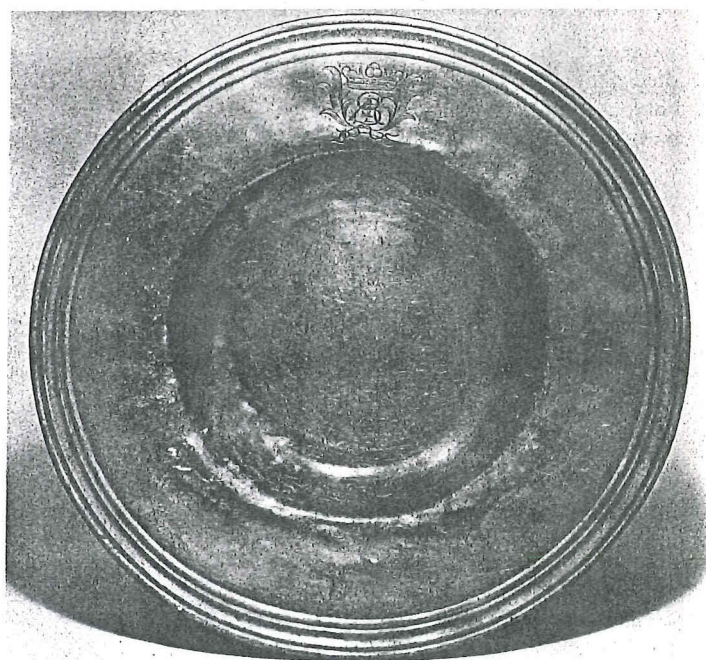
Heights 7 and 11 inches (18 and 28 cm.)

■ 195 TWO CONTINENTAL PEWTER PITCHERS

LATE 18TH CENTURY

Of bulbous form with incurved necks, one with initialed flat cover and twin-acorn thumbpiece, the other lacks cover, *probably Belgian, both unmarked*.

Heights 8¾ and 8 inches (22 and 20.4 cm.)



[ 196 ]

■ 196 TWO CONTINENTAL PEWTER CHARGERS

A broad-rimmed charger with molded border engraved with a monogram between crossed foliate sprays, *maker's mark T.C.M. above a swan, 17th Century*, and another with molded rim, *maker's mark G.A.W. Regensburg, c. 1800*.

Diameters 14 and 12¾ inches (35.5 and 32.5 cm.)

See illustration of the first

■ 197 THREE CONTINENTAL PEWTER ARTICLES

A tripod candlestick with multi-baluster stem, *by Johann Georg Sibern, Vienna, early 18th Century*, a flagon with screw-on covers for top and spout and with scroll handle, *possibly Swiss, early 19th Century*, and a baluster flagon with shell thumbpiece and leaf-capped scroll handle, *Flemish. Heights 10½ to 18½ inches (26.7 to 47 cm.)*

■ 198 HUNGARIAN PEWTER TANKARD

*KRONSTADT, 17TH CENTURY*

Of tall cylindrical shape with domed cover and base, the handle decorated with stylized plants, a cherub head and a bird, foliate thumbpiece, *maker's mark M.M. in monogram above a ewer and crowned tree.*

*Height 10¾ inches (27.4 cm.)*

■ 199 THREE CONTINENTAL PEWTER ARTICLES

A charger engraved with a portrait of Frederick the Great, a two-handled shallow Bowl engraved with a double portrait surrounded by formal foliage, and a circular Plate engraved with a flower spray, *both German, mid-19th Century.*

*Diameters 14 to 11¾ inches (35.5 to 30 cm.)*

■ 199A AUSTRIAN PEWTER FLAGON

*HALL I. TIROL, 18TH CENTURY*

Of tapered cylindrical form with spreading base, short spout, engraved with initials on front and cover, scroll handle dated 1747, *marked on handle and inside cover. Height 10¾ inches (26.4 cm.)*

■ 199B GERMAN PEWTER TANKARD

*HERRENBERG, IN WÜRTT, EARLY 18TH CENTURY*

Of narrow cylindrical form with flared base, scroll thumbpiece and handle, engraved with initials and the date 1726.

*Height 12¼ inches (21.2 cm.)*

■ 200 GERMAN PEWTER TANKARD

*CIRCA 1730*

Of cylindrical form with domed cover and base and with ball thumbpiece, engraved with stylized plants and with initials and date 1732, *marked with St. George and the dragon, also with a towered gateway, probably Freiberg. Height 8 inches (20.4 cm.)*

*See illustration*



[ 201 ]

■ 201 CONTINENTAL PEWTER FLAGON

*PROBABLY SWISS, 18TH CENTURY*

Of slender baluster form with long faceted covered spout supported by an arm-form brace, *unmarked. Height 12¼ inches (31 cm.)*

*See illustration*



[ 200 ]