

ESP

BRITISH AND EUROPEAN PEWTER

Including

A rare broad-rimmed Charger
A narrow-rimmed Charger
Channel Islands Measures
A 17th Century German Guild Cup
A Nuremberg Tankard
and
other good Dutch, German and Swiss Flagons

which will be sold by auction
by

SOTHEBY & CO.

Auctioneers of Literary Property and Works Illustrative
of the Fine Arts

At their large galleries,
34 & 35 New Bond Street, London W1A 2AA
TELEPHONE: 01-493 8080

Day of Sale
Thursday, 1st May, 1975 at 11 am precisely

In sending Commissions this Catalogue may be referred to as "BELL"

On view at least two days previously (not Saturdays)

Illustrated Catalogue Price 50p

BOARD OF DIRECTORS

P. C. Wilson, C.B.E. (*Chairman*)

P. M. H. Pollen, G. D. Llewellyn, The Earl of Westmorland, K.C.V.O.

J. M. Linell, P. J. R. Spira

R. P. T. Came, M. J. Webb, Lord John Kerr, M. J. Strauss, P. D. Thomson,
R. J. de la M. Thompson, D. E. Johns, A. Holloway

A. J. B. Kiddell, C. Gronau, P. M. R. Pouncey, A. T. Eeles, M. D. Ritchie,
D. J. Crowther, Sir Philip Hay, K.C.V.O., T.D., G. Hughes-Hartman, J. M. Stock,
J. F. Bowes-Lyon, Brigadier S. F. Clark, O.B.E., N. K. Davey, P. J. Hinks, M. C. Heseltine,
T. von Watzdorf, A. T. Festing, J. F. Cann, T. D. Llewellyn, J. B. Winter

ASSISTANT DIRECTORS

F. Nicholson, E. J. Wilson, D. Jeffcoat, D. A. Battie, J. M. Barran,
C. J. D. Mackay, P. J. Wadsworth, J. P. Palmer

ASSOCIATES

A. R. A. Hobson, H. A. Feisenberger, T. H. Clarke, N. MacLaren, P. J. Croft,
J. F. Hayward, J. W. Carter, C.B.E., J. M. Green, P. R. Grubb

MANAGEMENT

OFFICE OF THE CHAIRMAN

Chairman
Deputy Chairmen

Director Expert Departments
Group Finance Director

P. C. Wilson, C.B.E.
P. M. H. Pollen, G. D. Llewellyn
The Earl of Westmorland, K.C.V.O.
J. M. Linell
P. J. R. Spira

FINANCIAL AND ADMINISTRATIVE DEPARTMENTS

Accounts and Finance

Administration
Advertising and Catalogue Production
House Services
Insurance

Overseas Offices

Personnel
Public Relations (Clark Nelson)
Specialist Services and Communications
Works of Art Course

A. Holloway (*Finance Director and
Company Secretary*)
P. Knight (*Chief Accountant*)
L. G. Parkinson (*Chief Cashier*)
J. F. Cann
M. D. Ritchie
F. W. Beech
The Earl of Westmorland, K.C.V.O.,
R. Lloyd-Williams
G. D. Llewellyn, J. F. Bowes-Lyon,
D. H. McLaren, J. Beacham (*Accounts*)
D. K. Coombs
Brigadier S. F. Clark, O.B.E.
R. J. Rudd
P. M. H. Pollen, D. J. Shrub

EXPERT DEPARTMENTS

ANTIQUITIES	Felicity Nicholson
BOOKS AND MANUSCRIPTS	Lord John Kerr, A. R. A. Hobson
<i>Illustrated and Children's Books</i> <i>Scientific and Early Printed Books</i> <i>Autograph Letters and Manuscripts</i> <i>Sotheby's (Hodgson's Rooms)</i>	M. C. Heseltine H. A. Feisenberger P. J. Croft M. Morton-Smith
CERAMICS AND GLASS (EUROPEAN) <i>Ceramics</i> <i>Glass</i>	A. J. B. Kiddell, T. H. Clarke J. P. Palmer Sarah Battie
CHINESE WORKS OF ART	R. J. de la M. Thompson, C. J. D. Mackay
COINS AND MEDALS	D. J. Crowther, M. R. Naxton
FURNITURE <i>Clocks</i> <i>Textiles and Dolls</i>	M. J. Webb E. J. W. Vaughan C. H. Walford
IMPRESSIONIST AND MODERN ART <i>Drawings and Watercolours</i> <i>Contemporary Art</i>	M. J. Strauss, M. Blondeau (<i>Paris</i>) J. M. Barran T. von Watzdorf
JAPANESE WORKS OF ART	N. K. Davey
JEWELLERY	G. D. Llewellyn (<i>Zurich Sales</i>) P. J. Hinks
18/19 CENTURY PAINTINGS & DRAWINGS <i>Modern British Art</i>	P. D. Thomson, A. T. Festing, Janet Green
OLD MASTER DRAWINGS	P. M. R. Pouncey, J. M. Stock, Shaunagh FitzGerald
OLD MASTER PAINTINGS	D. E. Johns, P. M. R. Pouncey, N. MacLaren, T. D. Llewellyn, Carmen Gronau (<i>Florence</i>)
PRINTS	A. T. Eeles, F. L. Wilder
SILVER AND PEWTER	R. P. T. Came, P. B. Waldron
SOTHEBY'S BELGRAVIA	J. M. Linell, D. A. Battie
VALUATIONS	Sir Philip Hay, K.C.V.O., T.D., P. J. Wadsworth
WINE	P. R. Grubb, J. R. Lloyd
WORKS OF ART <i>European Enamels, Metalwork and Sculpture,</i> <i>Objects of Vertu and Icons</i> <i>Watches and Scientific Instruments</i> <i>Arms and Armour</i> <i>Musical Instruments</i> <i>Portrait Miniatures</i>	G. Hughes-Hartman, J. F. Hayward J. B. Winter, Elizabeth Wilson Tina Millar D. Jeffcoat G. W. H. Wells R. B. Allen
SOTHEBY PARKE BERNET NEW YORK	J. L. Marion (<i>President</i>)

Notice and Condition of Sale

Care is taken to ensure that any statement as to authorship, attribution, origin, date, age, provenance and conditions is reliable and accurate but all such statements are statements of opinion and are not to be taken as statements or representations of fact. Sotheby & Co. reserve the right, in forming their opinion, to consult and rely on any expert or authority reasonably considered by them to be reliable.

Standard Conditions of Sale

- 1 The highest bidder shall be the buyer. If any dispute arises the auctioneer shall have absolute discretion to settle it and to put any disputed lot up again. Sotheby & Co. act as agents only except to the extent they are stated wholly or partly to own any lot; they have full discretion to refuse any bidding, to divide any lot, to combine any two lots or more lots and to withdraw any lot or lots from the sale without in any case giving any reason.
- 2 No person shall advance any price less than 25p, or, above 10 pounds, 50p, and so on in proportion or at such rate as the auctioneer may in his absolute discretion direct.
- 3 All lots are put up for sale subject to any reserve price imposed by the seller. Where there is no reserve price, the seller has the right to bid either personally or by any one person (who may be the auctioneer).
- 4 Immediately the lot is sold buyers shall notify their names and addresses to Sotheby & Co., and, if required, pay down 50p in the pound (or such further amount as Sotheby & Co. in their absolute discretion may determine) in part payment of the purchase money, in default of which the lot or lots purchased may be immediately put up again and resold.
- 5 All lots are sold as shown, with all faults, imperfections and errors of description. Neither Sotheby & Co., nor the vendor(s) are responsible for errors of description or for genuineness or authenticity of any lot, or for any fault or defect in it. No warranty whatever is given by Sotheby & Co. or any vendor to any buyer in respect of any lot.
- 6 Notwithstanding the preceding Condition, if within twenty-one days of the sale of any lot the buyer gives notice in writing to Sotheby & Co. that the lot sold is a forgery and if within fourteen days after giving such notice the buyer returns the lot in the same condition as it was at the time of the sale to the premises of Sotheby & Co. and there shows that considered in the light of the terms of the Catalogue the lot sold is a forgery Sotheby & Co. are authorised to and will rescind the sale and refund the purchase price received by them.
- 7 Lots shall be paid for in full to Sotheby & Co. and taken away from Sotheby & Co.'s premises at the buyer's risk and expense by the end of the first working day after the conclusion of the sale, in default of which Sotheby & Co. shall not be responsible if the same are lost, stolen, damaged, or destroyed and any lots not taken away shall be at the sole risk of the buyer and subject to a charge for warehousing. No purchase shall be claimed or removed until the sale has been concluded. If at the expiration of seven days after the conclusion of the sale lots are not cleared they may then be sold immediately, either publicly or by private treaty, without any notice being given to the buyer. Sotheby & Co. reserve the right to charge interest at a rate not exceeding 18% p.a. on any part of the purchase money unpaid for more than 7 days.
- 8 In the event of any failure of the buyer to comply with any of the above Conditions the damages recoverable by the seller or Sotheby & Co. from the defaulter shall include any loss arising on any resale of the lot, together with the charges and expenses in respect of both sales, and any money deposited in part-payment shall be held by Sotheby & Co., on account of any liability of the defaulter to them.
- 9 In the case of some lots the buyer will be liable to pay Value Added Tax in addition to the purchase money. All such lots are indicated with the sign †.

CATALOGUE OF
BRITISH AND EUROPEAN PEWTER

Day of Sale
Thursday, 1st May, 1975 at 11 am precisely

BRITISH PEWTER

Various Properties

1 A pair of Pap Boats, of boat shape with small ears, 5in. long, marked in base, by Dent, late 19th century (2)

2 "National Types of Old Pewter" by H. H. Cotterell, no. 941 from the limited edition of 1000, published by Antiques Incorporated, Boston, 1925

3 A set of three straight-sided Mugs, from quart to half-pint capacity, marked James Yates; and a pot-bellied half gill mug and quarter gill, from 6in. to 1 $\frac{3}{4}$ in., Victorian (5)

4 A straight-sided quart Mug, 6in.; a similar pint, 4 $\frac{1}{2}$ in.; a pot-belly gill Mug, 3in.; and a similar half-gill, 2 $\frac{1}{2}$ in., Victorian (4)



5 A pair of straight-sided quart Mugs, with LCC capacity marks, the bodies engraved with former owner's name and tavern in Sydenham, 5 $\frac{3}{4}$ in. high, late 19th Century (2)

6 A hard metal tapering Communion Flagon, with lidded spout, double domed cover and spire finial, "S" shaped handle, inscribed on the side "RAMOTH BAPTIST CHAPEL HIRWAUN", 14in., mid-19th century

7 A hard metal deep Bowl, 10 $\frac{1}{8}$ in. diam., marked J. Beal & Sons Sheffield, 19th century; a quart straight-sided Mug, and half-pint Mug, 6 $\frac{1}{4}$ in. and 3 $\frac{1}{2}$ in. high, the quart George IV, the half-pint Victorian (3)

8 A pint pot-bellied Mug, 5in.; and two half-pint pot-bellied Mugs with a number of Victorian capacity marks, 3 $\frac{1}{2}$ in., all 19th century (3)

9 A footed Plate or cake stand, 10in. diam., a worn maker's mark with crowned X on reverse, early 19th century

10 A pot-belly Mug of pint capacity with Victorian capacity check marks, 5in.; a half-pint and a gill of similar style, 3 $\frac{3}{4}$ in. and 3 $\frac{1}{4}$ in.; and a half-pint straight sided Mug, marked James Yates, 3 $\frac{3}{4}$ in., Victorian (4)

11 A triple reeded Dish, with former owner's initials, 18in. diam., "hall marks" on rim, by John Cave of Bristol (Cott. no. 859), circa 1710

12 A single reeded Plate, with band of scratched decoration on rim and another in base, 8in., maker's mark on back, by IS; and another similar Plate, 8in., with rubbed maker's marks, German, 18th century (2)

13 A set of five Plates, with reeded rims, $9\frac{3}{4}$ in. diam., by Compton (Cott. no. 1063), makers marks on backs, circa 1800 (5)

14 A quart Mug with "broken" handle and straight sided body, inscribed with initials and FARDON, 6in., rubbed maker's marks with "WR" mark, pre Imperial Ale Standard, circa 1820

15 A pair of plain-rimmed Dishes, 15in. diam., by Hall and Scott (Cott. no. 2089), mid-18th century (2)

16 A pair of single-reeled Dishes, $16\frac{1}{2}$ in. diam., with former owner's initials MB struck on the rim and with maker's mark on reverse, by Robert Sadler of Newcastle (Cott. no. 4088), circa 1750 (2)

17 A plain-rimmed Dish, $14\frac{3}{4}$ in. diam., with an engraved crest on rim and the worn maker's mark of Hellier Perchard (Cott. no. 3611), circa 1740

18 A GOOD SET OF PLAIN-RIMMED PLATES, the rims engraved with a crest, $9\frac{3}{4}$ in. diam., by Richard King (Cott. no. 2750), circa 1760 (8)

19 A SET OF WAVY-EDGED PLATES, with cast decorated rims engraved with a crest, $9\frac{3}{4}$ in. diam., by Joseph Spackman (Cott. no. 4440), circa 1760 (6)

20 A pair of deep-bowled plain-rimmed Plates, bearing the same crest as lot 18, $9\frac{1}{2}$ in. diam., by Richard King (Cott. no. 2750), circa 1760 (2)

21 A plain-rimmed Plate, $10\frac{3}{4}$ in. diam., with worn maker's mark; another plain-rimmed Plate, $9\frac{3}{4}$ in. diam., by Samuel Duncombe (Cott. no. 1466); and another, with worn marks, $9\frac{1}{4}$ in. diam., all mid-18th century (3)

22 A pair of Hot-water Plates, $9\frac{1}{2}$ in., by Samuel Cocks (Cott. no. 1004), circa 1820; and three other Hot-water Plates, one with an unusual deep well, early 19th century (5)

23 A FINE SET OF EIGHT WAVY-EDGED PLATES, with an engraved coat-of-arms on the rim, $10\frac{3}{4}$ in. diam., by Burford & Green (Cott. no. 698); with three oval wavy-edged Dishes, by the same maker and with the same coat-of-arms, $11\frac{1}{4}$ in. by $8\frac{3}{4}$ in., circa 1760 (11)

The Arms are those of Buller

(See Illustration)



24 A single-reeded Dish, $16\frac{1}{4}$ in. diam., the rim marked with hallmarks on the rim, by Joseph Giddings (Cott. no. 1858), circa 1710-20

25 A single-reeded Dish, $18\frac{1}{4}$ in. diam., worn marks on the back, 18th century

26 A matched set of six hard metal small Bowls, on spreading base, $5\frac{1}{4}$ in. diam., four unmarked, two marked James Dixon, mid-19th Century (6)

27 Three similar Bowls, two bearing owner's initials R.G., the third unmarked, $5\frac{1}{4}$ in. diam., early 19th Century (3)

28 Four plain-rimmed Plates, one with crest engraved on rim, $9\frac{3}{4}$ in. diam., by Joseph Spackman (Cott. no. 4440), another with owner's initials on rim, 10in. diam., two $9\frac{1}{2}$ in. diam., with worn marks, all 18th century (4)

29 A set of three plain-rimmed Plates, by John Watts (Cott. no. 4991), the rims engraved with former owner's initials FLM, $9\frac{1}{2}$ in. diam., mid-18th century (3)

30 A set of three Plates, by Thomas Alderson (Cott. no. 40), with plain rims engraved with a crown and initials, $9\frac{3}{4}$ in. diam.; and a pair of plain-rimmed Plates, engraved with initials, by Samuel Cocks (Cott. no. 1004), $9\frac{1}{2}$ in. diam., early 19th century (5)

31 A square-handled quart Mug, $6\frac{1}{2}$ in., by John Warne (Cott. no. 4968); a tapering oval-handled pint Measure, with tavern inscription on base and 1826 capacity mark, $4\frac{3}{4}$ in.; and two Victorian gill Mugs of pot-belly form, 3in., all 19th century (4)

32 A single-reeded Dish, with former owner's initials B^LE punched on rim, $14\frac{3}{4}$ in. diam., with worn maker's mark on reverse, 18th century; a plain-rimmed Plate, 9in. diam., by John Harrison of York (Cott. no. 2162); and a single-reeded Plate, 9in. diam., by Edward Leapidge (Cott. no. 2894), both circa 1750 (3)

33 A set of three straight-sided Mugs, of quart, pint, and half-pint capacity, 6in., $4\frac{1}{2}$ in., and $3\frac{1}{2}$ in. high, Victorian (3)

34 A U-shaped quart Mug, with worn maker's marks, William III ale standard capacity check, $6\frac{3}{4}$ in. high, circa 1800; and a straight-sided pint Mug, with Victorian capacity mark, 5in. (2)

35 A matched set of six bellied Mugs, from quart to quarter-gill, Victorian (6)

36 A half-pint bellied Mug; a similar gill and half-gill; and a pear-shaped gill Measure attractively inscribed Royal Albion Hotel Ramsgate, Victorian (4)

37 A SET OF SIX PLATES, with plain rims, $9\frac{3}{4}$ in. diam., by Pitt & Dadley (Cott. no. 3694), circa 1800 (6)

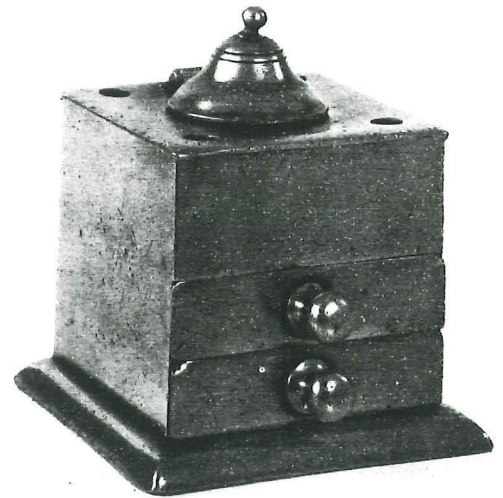
38 An Irish 'Haystack' pint Measure, 6in. high, by Austen of Cork (Cott. no. 153); and two Irish two-capacity "egg-cup" Spirit Measures, of half and quarter gill, $3\frac{1}{4}$ in. high, all early 19th century (3)

39 A matched set of three Irish 'Haystack' Measures, from pint to gill capacity, 6in., 5in. and $3\frac{3}{4}$ in. high, by Austen of Cork (Cott. no. 153), early 19th century (3)

40 An interesting Porringer, of shaped form, with trefoil fretted ear with initials G.G., $7\frac{1}{4}$ in., worn maker's marks, circa 1700

The Property of Mrs. H. Vernon

- 41 A pair of nautilus shaped Spoon Warmers, with flat lid and engraved decoration on body, mounted on a simulated rock base, 6in. high; a two-handled footed Bowl, 5in. diam.; a Snuffers Tray, 9in., by James Dixon; two pairs of steel Snuffers and a small hard-metal Tinder Box, 3½in., mostly 19th century (7)
- 42 A straight-sided quart Mug, with incised bands around base, George IV capacity marks; another similar, also with George IV capacity mark, 6in., circa 1830 (2)
- 43 A straight-sided lipped Mug, of quart capacity, with marks of Yates and Birch, 6in.; and two gill pot belly Mugs, 3in., Victorian (3)
- 44 A straight-sided domed lidded Tankard, with open-chair thumbpiece and square handle, 8in., bearing the mark of Townsend & Compton, probably by their successors, circa 1850
- 45 A straight-sided double-domed lidded Tankard, of pint capacity, with open-chair thumbpiece and broken handle, 5½in. high, 19th century
- 46 A U-shaped Tankard, with double-domed lid, open-chair thumbpiece and 'broken' handle, 8in., with four worn touchmarks on rim, circa 1830
- 47 A single-reeded narrow-rimmed Bed Pan, with handle missing, 9½in. diam.; and a Bowl, with similar border, 10¾in. diam., 19th century (2)
- 48 A set of four Candlesticks, on hexagonal base, with central knob and baluster stem with similar scone, 9in. high, late 19th century (4)
- 49 A Treasury Inkstand, of typical form, with two hinged lids, on four feet, 7¼in. by 5in., circa 1800; and a small cup Salt, 1½in. diam., both circa 1800 (2)
- 50 A Scottish baluster Measure, with flat lid and embryo shell thumbpiece, with a number of capacity marks on rim, of half-pint capacity, 5¼in. high, by Alexander Bain of Edinburgh (Cott. no. 196), circa 1830
- 51 A Scottish baluster Measure, with flat lid and embryo shell thumbpiece, of half-pint capacity, 4¾in., unmarked except for capacity markings, circa 1830
- 52 A plain-rimmed Dish, 13¼in. diam., by Samuel Duncombe (Cott. no. 1466); another by the same maker, 13½in. diam.; and a plain-rimmed Plate, 9in., 18th century (3)
- 53 A TRIPLE-REEDED STUART DISH, 12¾in. diam., with hallmarks on rim of an unrecorded maker, circa 1700
- 54 A 'Welsh Hat' Commode, with single-reeded narrow rim, 11½in. diam., 7¾in. high, by Birch & Villiers (Cott. no. 430), circa 1800
- 55 A GOOD INKSTAND, of cube form, with two drawers at the base and a domed lid, inscribed on the base "Coutts Banking House 1790", 4in. high, late 18th century
(See Illustration)



Various Properties

56 A plain-rimmed Dish, $14\frac{3}{4}$ in. diam., with worn maker's mark on reverse, 18th century; a hard-metal Broth Bowl, $5\frac{1}{2}$ in. diam., 19th century; a straight-sided Tobacco Box, with domed and knopped lid, 5in. high; and two Wine Funnels, of typical form, 7in. and 6in. high, all early 19th century (5)

57 A deep-bowled Chalice, on baluster stem with spreading foot, $7\frac{1}{2}$ in. high, no maker's marks, late 18th Century

58 A round Tobacco Box, with flat incised lid surmounted by a brass knob, with lead liner and knob, $4\frac{1}{2}$ in. high, circa 1800

59 A DOUBLE-REEDED DISH, $14\frac{1}{4}$ in. diam., the rim struck with former owner's initial MB, and with hallmark struck four times H.R., with worn maker's mark on reverse, an unrecorded maker, circa 1700

60 A GOOD TRIPLE-REEDED STUART PLATE, $9\frac{1}{4}$ in. diam., with well struck hallmarks and crest on rim, and maker's mark on reverse, by Adam Churcher of Petersfield (Cott. no. 917), circa 1692

61 A multi-reeDED Stuart Plate, $8\frac{3}{4}$ in. diam., with worn hallmarks and maker's mark on reverse and former owner's initials A.I. on rim, apparently by I.P. (Cott. no. 4825), circa 1690



62 A RARE BALUSTER MEASURE, the lid and thumbpiece removed and an extension made to the neck to bring the capacity from a pint old English wine standard to a pint Imperial, the extension stamped G IV and with several other capacity marks, the original baluster probably had a bud thumbpiece, the handle with ball terminal, 6in. overall, the body 18th century and the extension circa 1826

(See Illustration)

63 A LIDLESS CHANNEL ISLANDS MEASURE (Woolmer Type B), $5\frac{1}{2}$ in. high, with Jersey capacity mark, late 18th century

64 A pair of plain-rimmed Plates, $9\frac{1}{4}$ in. diam., by "A.H." whose hallmarks are on the reverse (unrecorded maker), 18th century (2)

65 A Bowl, with narrow single-reeDED rim, $10\frac{1}{2}$ in. diam., with a worn maker's mark on reverse, early 18th century



67



68



69

66 A straight-sided half-pint Mug, with William III and George IV capacity marks on body and base, $3\frac{1}{2}$ in., partly obscured hallmarks on rim, early 19th century; and a pair of small Sauceboats, $5\frac{1}{2}$ in., late 19th Century (3)

67 A GOOD TAPPIT HEN of typical form, 11in. high, (28cm.), of Scottish one pint capacity, with former owners' initials $1^B M$ engraved on the lid, late 18th century

(See Illustration)

68 A TAPPIT HEN of typical form, the body engraved A^I and struck with a worn fleur-de-lys shaped mark on the collar, 9in. (23cm.) high, of Chopin capacity, circa 1800

(See Illustration)

69 A TAPPIT HEN of typical form, the collar engraved $1\frac{3}{4}S$ and with a Dean of Guild's stamp, $6\frac{3}{4}$ in. high (17cm.), of Mutchkin capacity, circa 1800

(See Illustration)

70 A BULBOUS ALE JUG of typical form, with spout and filter, open chair thumbpiece with flat topped domed lid, inscribed on base "Rising Sun, East Street, Wadworth", 8in., unmarked, of half-gallon capacity, late 18th century

71 A RARE LIDDED JERSEY MEASURE of half noggin size, $3\frac{1}{4}$ in., with twin acorn thumbpiece and Jersey verification style A and owners initials on handle, some restoration to lid and handle, mid-18th century

The Property of Dr. T. W. F. Brown, C.B.E.

72 A footed Cup, with U-shaped body and strap handle, $5\frac{1}{4}$ in., pint capacity; and another similar Cup, with George IV capacity mark, $4\frac{1}{4}$ in., early 19th century (2)

73 A square-handled pint Mug, 5in., with worn maker's mark on base; a half-pint U-shaped Mug, with "broken" handle, George IV capacity mark, 4in.; and a hard-metal Chamber Candlestick (3)

74 A matched set of pot-bellied Mugs, of quart, pint, half-pint, gill, half-gill and quarter-gill capacity, Victorian (6)

75 A quart pot-bellied Mug, with George IV capacity mark, 6in.; a similar gill, 3in.; and another small pot-bellied Mug (3)

76 A concave-sided quart Tankard, with domed top and plumed thumbpiece, $8\frac{1}{4}$ in., by James Yates (Cott. no. 533), circa 1840

77 An ale Jug, of typical form, with large spout and sieve, $5\frac{1}{2}$ in. high, of quart capacity, early 19th century

78 AN 'OXFORD' ALE OR CIDER JUG, of typical form, with flat stepped lid, open-chair thumbpiece, the body engraved with former owner's initials, the base engraved with a tavern name, $8\frac{3}{4}$ in. high, of half-gallon capacity, circa 1800

79 A Scottish baluster Measure, with flat lid, undecorated shell thumbpiece, the body with George IV capacity mark, of gill capacity, $3\frac{1}{4}$ in. high, circa 1830

80 A plain-rimmed Dish, $16\frac{1}{2}$ in. diam., with former owner's initials KS stamped on back, with worn touch mark; and a single-reeded Dish, $13\frac{1}{2}$ in. diam., with no discernible maker's marks, both 18th century (2)



82

81 A LIDDED JERSEY MEASURE, of typical pear-shaped form, heart-shaped lid and twin-acorn thumbpieces, $10\frac{3}{4}$ in. high, by John de St. Croix (Cott. no. 1360), with Jersey capacity mark, mid-18th century

Different Properties

82 A LIDDED JERSEY MEASURE, of typical pear-shaped form, with heart-shaped lid and twin-acorn thumbpiece, with Jersey capacity mark, $8\frac{3}{4}$ in. high, by John de St. Croix (Cott. no. 1360), type 3 (cf Woolmer Channel Island Pewter), mid-18th century

(See Illustration)

83 ANOTHER LIDDED JERSEY MEASURE, of similar form, with decorated hinge pin, Jersey capacity mark, $8\frac{1}{4}$ in. high, group 4 (unmarked), mid-18th century



88

The Property of a Gentleman

84 A GROUP OF NINE BULBOUS MEASURES from the quart, pint, two half-pints, gill, two half-gills, a quarter and a fifth-gill, by various makers, Victorian (9)

85 A RARE JERSEY (CHANNEL ISLANDS) UNLIDDED MEASURE, (Woolmer type A) with unpierced hinge, 6in. overall, with Jersey capacity mark type B, pint capacity, circa 1790-1800

cf Pewter of the Channel Islands

86 A Jersey Measure of unlidded form of half-pint capacity (type C) bearing Jersey verification mark type B, 4½in., early 19th century



89

87 A Jersey unlidded Measure of noggin capacity, hybrid type B/C with verification seal B & D, 3¾in., early 19th century

88 A FINE GUERNSEY LIDDED MEASURE, of type 1 style, of pot or half-gallon capacity, with twin acorn thumbpiece, 11¼in. maker's marks on lid, by A. Carter (Cott. no. 825) and his partner 'C.M.', circa 1750

cf "Pewter of the Channel Islands", plate LXV, for a similar measure

(See Illustration)

89 A GOOD PINT GUERNSEY MEASURE of the same form by A. Carter and "C.M.", 7in. overall, circa 1750

(See Illustration)



90

90 ANOTHER INTERESTING GUERNSEY MEASURE with twin bud thumbpiece, by the same makers, quart capacity, 9in., circa 1750

(See Illustration)



Various Properties

91 A RARE IRISH LIDDED FLAGON, with wide applied skirt, straight-sided and lipped body, with flat-topped lid, and ram's-horn thumbpiece, with a heavily scrolled handle in the shape of a question-mark terminating in a shield, 12in. high, with the previously unrecorded maker's mark struck inside the lid of "Richard Palmer, Ormond Quay" (Cott. no. 3493), Dublin, mid-18th century

(See Illustration)

92 A GOOD TRIPLE-REEDED CHARGER, 20in. diam., worn makers marks on back and obscured touch marks on rim, circa 1680-1700

93 A plain rimmed deep-bowled Charger or Serving Dish, with crest engraved on rim, 20½in. diam., unmarked, mid-18th century

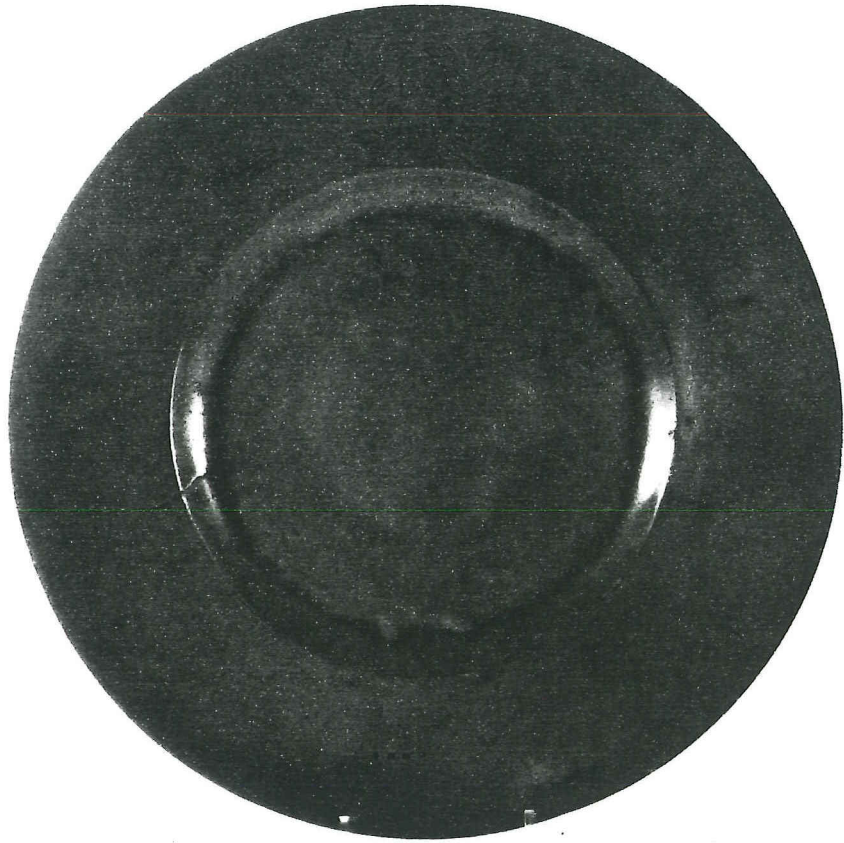
94 A single-reeDED Charger, 22½in. diam., with no discernible maker's mark, mid-18th century



96 AN EXTREMELY RARE NARROW-RIMMED AND REEDED STUART DISH by George Smith (Cott. no. 4347), 15in. diam., hallmarks on the rim with the full touch on back, circa 1680

Nearly all the narrow-rimmed dishes appear to have been made by this maker. See *Antique Pewter of the British Isles*, by R. F. Michaelis, fig. 22 for another example

(See Illustration)



98

The Property of P. A. Latham, Esq.

97 AN EXTREMELY RARE ROUND RIMLESS DISH, 14 $\frac{3}{4}$ in. diam., with clearly struck hallmarks on front of dish by "A.P." (Cott. no. 5827), circa 1680

Platters of this style are not recorded in this country though earlier examples are found in Holland, circa 1600. Originally derived from plain wooden plates, examples are illustrated in A. J. G. Verster's "Tin Door De Eeuwen", plate 41, and appear in a number of 16th century paintings including Cornelis Anthoniszoon's "A Shooting Supper Party"

98 A FINE BROAD-RIMMED CHARGER, 23in. diam., with 4 $\frac{1}{2}$ in. rim, the rim engraved with initials L.S. in a cartouche and with worn hallmarks, probably by Thomas Smith (Cott. no. 4386a), circa 1670

(See Illustration)

CONTINENTAL PEWTER

Various Properties

- 99 A narrow plain-rimmed deep Bowl, with two ears or handles of rounded form, possibly from a hospital, $4\frac{1}{2}$ in. (11.5cm.) high and $8\frac{3}{4}$ in. (22.3cm.) diam., probably French, circa 1800
- 100 A SET OF SEVEN FRENCH LIDLESS MEASURES, with straight sides, short foot and square handles, from the litre to the centilitre, the two larger sizes by maker F.B., A.P., two more by A.L., one unmarked and two by C.L., from 7in. (17.8cm.) overall, 19th century (7)
- 101 A straight-sided Coffee Pot, with spout, flat-topped domed lid with knob and wooden handle, 9in. (23cm.) high, with worn maker's marks on inside of base, probably German, mid-19th century
- 102 A straight-sided French Measure with square handle, wide collar and oval lid, of demi-litre capacity, $6\frac{1}{2}$ in. (16.5cm.), by Legrand, Lille
- 103 A Normandy Measure of typical shouldered form, heart-shaped lid, acorn thumbpiece, $10\frac{1}{4}$ in. (26cm.), French, 19th century
- 104 A straight-sided Measure, with square handle, everted collar with heart-shaped lid and wedge thumbpiece, $8\frac{1}{2}$ in. (21.5cm.), by Martin, French, mid-19th century
- 105 A Continental Porringer or Ecuelle, with two fretted ears, the bowl 6in. (15cm.) diam., no maker's marks, possibly French, late 18th century
- 106 A single-reeded Plate, $9\frac{1}{2}$ in. (24cm.) diam., with worn maker's mark on reverse, probably German, 18th century
- 107 A straight-sided French Measure, with wide collar, heart-shaped lid, erect thumbpiece and square handle, of double-litre capacity, 10in. (25.5cm.) high, by Dreptin, of Cambrai, mid-19th century
- 108 A straight-sided lidless Measure with spout and handle with thumbpiece, $5\frac{1}{2}$ in. (14cm.), marked on base with double stamped maker's name and "Bleifrei", half-litre capacity, Central European, 19th century
- 109 A tall Flagon with spout, the body wrythen and hammered into geometric patterns, flat-topped domed lid with ball thumbpiece, $12\frac{3}{4}$ in. (32.5cm.), no maker's marks, German, 19th century
- 110 A Flagon with short bulbous body, elongated neck, the body hammered into patterns, the neck decorated with eight German coins, the double domed lid also embossed with "erect" thumbpiece, $11\frac{1}{2}$ in. (29cm.), German, mid-19th century
- 111 A single-reeded Plate, with punched decoration on the border, the centre embossed with a portrait of Grafe Egmont in Elizabethan dress, $9\frac{1}{4}$ in. (24.5cm.), worn maker's marks on reverse; and another plain-rimmed Plate, with a band of punched decoration on the rim, the centre embossed with two coats-of-arms and a coronet, $9\frac{1}{2}$ in. (24cm.), worn maker's marks on surface of the plate, both German, late 18th century (2)
- 112 A FRENCH JUG, of baluster form, with S-shaped handle terminating in a scroll finial, $6\frac{1}{2}$ in. (16.5cm.) high, by Corlieur of Paris, early 19th century
- 113 A trefid Spoon, with cast decoration to stem and worn maker's mark on reverse, $7\frac{1}{4}$ in.; and another trefid Spoon, again with worn maker's mark, 7in., Dutch, circa 1700 (2)

- 114 A pair of dog-nosed Spoons, with cast shell on the back of the bowls, by *L.D.B.*, marks struck twice on each spoon, 8in. (20.4cm.), Dutch, circa 1710 (2)
- 115 Three single-reeded Plates, $9\frac{1}{2}$ in. diam., with worn maker's marks, Dutch or Flemish, 18th century (3)
- 116 Three plain-rimmed Plates, 9in. diam., by various makers, Dutch or Flemish, 18th century; and a single-reeded bowl Plate, $9\frac{1}{2}$ in. diam., with worn maker's mark (4)
- 117 A single-reeded Plate, 9in. diam., with worn Bruges mark, Belgian, early 18th century; a single-reeded Plate, $9\frac{1}{2}$ in. diam., by *D. Lokermans*, Rotterdam, circa 1750; and a plain-rimmed deep-bowled Plate, $9\frac{1}{4}$ in. diam., by *D.B.*, possibly Bremen, German, 18th century (3)
- 118 A NORMANDY FLAGON, of typical form, with tapering neck, wide collar, heart-shaped lid with twin-acorn thumbpiece, the handle inscribed *E. Ehde*, $10\frac{1}{2}$ in. (26.5cm.) high, French, late 18th century
- 119 A straight-sided French Measure, with unusually narrow collar and over-lapping heart-shaped lid, erect thumbpiece and square handle with a number of capacity marks on lid and collar, of double litre capacity, $10\frac{3}{4}$ in. (27.5cm.) high, circa 1850
- 120 A tulip-shaped Measure with spout, the flat-topped domed cover with shell thumbpiece, $9\frac{3}{4}$ in. (25cm.), worn rose and crown mark in base, Flemish or Dutch, circa 1800
- 121 A late 19th century copy of a Bishop's Flagon, the tall tapering body decorated with applied coats-of-arms and bishop's mitre, standing on three feet, the multi-domed lid surmounted with a cartouche and engraved plaque, 15in. (38cm.) high, no maker's marks
- 122 A tapering Flagon, with shaped spout and flat-topped lid to body and spout, surmounted by a ball thumbpiece, the body engraved with a former owner's name, floral motif and the date 1807, 11in. (28cm.) high, no maker's marks, German, 19th century
- 123 An acorn-shaped Water Cistern, with four applied lion-mask ornaments, with zoomorphic spout and brass tap, the lid surmounted with a knight in armour, $14\frac{1}{2}$ in. (37cm.) overall; and a Hand Bowl or Water Container, with embossed back-plate at right-angles to the bowl, set on claw-and-ball feet, 13in. deep, 14in. wide and 19in. high, with worn maker's mark on back-plate, Swiss or German, mid-19th century (2)
- 124 A wavy-edged Plate, $9\frac{1}{2}$ in. (24cm.) diam., with worn makers mark on back, Low Countries; and a multiple knopped baluster Candlestick with wide decorated base with engraved initials *FGH* and dated 1745, $6\frac{1}{2}$ in. (16.5cm.), probably German, both 18th century (2)
- 125 A set of five rimless deep Plates, $8\frac{3}{4}$ in. (22.2cm.) diam., unmarked, probably German, 19th century (5)
- 126 Eight rimless deep Plates, $8\frac{3}{4}$ in. (22.2cm.) diam., five with worn marks, German, 19th century (8)
- 127 Two single-reeded deep Bowls, $9\frac{1}{4}$ in. (23.5cm.) diam., one with worn mark, German, early 19th century (2)
- 128 Three single-reeded Plates, $9\frac{1}{4}$ in. and $9\frac{3}{4}$ in. (23.5cm. and 24cm.), by various makers; a fourth, $9\frac{1}{4}$ in. (23.5cm.); and another, $8\frac{3}{4}$ in. (22.2cm.), German, 19th century (5)
- 129 A single-reeded deep Bowl, 7in. (18cm.) diam., unmarked; and a single-reeded 10in. (25.5cm.) bowl Plate, with worn maker's marks, circa 1800 (2)

A GROUP OF SWISS PEWTER



130 A GOOD FLAGON OR BAUCHKANNE, with bulbous body, with narrowing neck, on hollow skirt base, the wide collar surmounted with a heart-shaped lid with a wedge and a pair of pomegranates as thumbpiece, the lid also has a dolphin mounted upon it, the lid engraved with the initials PK, and with a maker's mark, that of Andre Utin, of Vevey, mid-18th century, 14in. (36cm.) high

(See Illustration)

131 A GOOD FLAGON OR BAUCHKANNE of similar form, with bulbous body, narrow neck, hollow skirt and wide collar with heart-shaped lid, the lid partly replaced, with wedge and ram's horn thumbpiece, 14in. (36cm.) high, and with the mark of Giuseppe Maciaco of Brig, first half of the 19th century



132 A GOOD 'GLOCKENKANNE' with slightly tapering body wider at the base, faceted and lidded spout, the cover with concave ring handle, 9½in. (24cm.) high, with applied shield on body bearing initials H.T.S. 1779, and the lid of the spout with town and maker's mark, by Johann I. Zimmermann of Zurich, 18th century

(See Illustration)



134

134 A TAPERING SPOUTED FLAGON OR SCHNABELSTIZE, the body inscribed IH 1784 with double domed flat-topped cover and strawberry knob, "erect" thumbpiece, 12in. (30cm.), makers mark on handle, by Emmanuel Streckeyesen, Basle, circa 1780

(See Illustration)



135

135 A similar spouted and lidded Flagon also with "strawberry" finial and erect thumbpiece, worn makers mark on handle, 12in. (30cm.), Swiss, 18th century

(See Illustration)

CONTINENTAL PEWTER



The Property of Dr. T. W. F. Brown, C.B.E.

136 A GOOD FRENCH LIDDED MEASURE OR PICHET, with applied skirt, the body narrowing to a wider neck, heart-shaped lid and decorated erect thumbpiece, 9in. (23cm.) high, with former owner's initials FP punched on lid and a maker's mark on base, by Nicholas F. Marchand, Versailles, circa 1750

N. F. Marchand worked in Paris until 1737 and this is an example of his work in Versailles

(See Illustration)

137 A matched set of three straight-sided French Measures, with square handles, of litre, demi-litre and double decilitre capacity, 7 $\frac{1}{4}$ in. (18.5cm.) high, 5 $\frac{3}{4}$ in. (15cm.), and 4 $\frac{1}{4}$ in. (11cm.), by various makers, 2nd half 19th century (3)

138 A matched set of four straight-sided French Measures, with square handles, wide collars and heart-shaped lids, of litre, double-decilitre, decilitre and demi-decilitre capacity, 8 $\frac{1}{4}$ in. (21cm.), 5in. (12.5cm.), 4in. (10cm.), 3 $\frac{1}{4}$ in. (8cm.), by various makers, circa 1860 (4)

139 A single-reeded deep Bowl, with two embossed coats-of-arms with decoration and crest in base, 14in. (36cm.) diam., probably French, 19th century

140 A small Taper Lamp, with U-shaped bowl with cast decoration, square base and wood handle, 4in. (10cm.) high; a lipped Ladle, with wooden handle, 11 $\frac{1}{2}$ in. (29cm.) long; and two miniature Jugs, probably toys, German, 19th century (4)

141 A Spoon Rack, with shaped back and reinforced hole for hanging, with six apertures for spoons set in base at right-angles to back, 12in. (30cm.) by 7in. (18cm.), unmarked, probably German, early 19th century

The Property of a Lady

142 A pair of single-reeded Plates, the rims punched with two fleur-de-lys and initials MMF, 9 $\frac{1}{4}$ in. (23.5cm.) diam., with worn maker's marks on reverse, by A.B., probably French, 18th century (2)

143 A pair of wavy-edged Plates, $10\frac{1}{4}$ in. (26.5cm.) diam., the reverse struck with a crowned rose and worn maker's mark, also former owner's initials GS, Dutch or Flemish, late 18th century; together with a single-reeded Plate, $8\frac{3}{4}$ in. (23cm.) diam., no maker's marks, Low Countries, circa 1750 (3)

144 A two-handled Bowl, the bottom of the body being rounded, with straight sides, with shaped moveable handles, $11\frac{1}{2}$ in. (29cm.) diam., by I. M. Tindemans, probably Dutch, late 18th century



145 A GOOD PEAR-SHAPED KANN OR FLAGON, with flat domed lid and erect thumbpiece, 8in. (20.5cm.) high, with maker's mark struck on the base, by H.V.D., possibly Hendrik van Duyvelin, Dutch, circa 1740-80

(See Illustration)

146 A PEAR-SHAPED FLAGON with flat-domed lid and erect thumbpiece, 8in. (20.5cm.) high, with worn maker's mark on base, (the lid a replacement), by L.V.W., possibly Flemish, late 18th century

147 An interesting Dutch Flagon, with straight-sided body tapering in at the neck, with lip and flat-topped domed lid, shell thumbpiece, part of the handle now separated, $11\frac{1}{2}$ in. (29cm.) high, with worn maker's mark on reverse, circa 1800



Different Properties

148 A POT-BELLIED FLAGON, with flat domed lid, erect thumbpiece, $10\frac{1}{2}$ in. (26.5cm.) high, worn mark on base, Low Countries, late 18th century

(See Illustration)

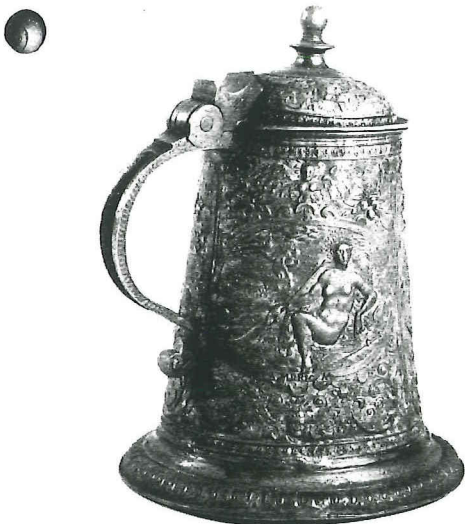
149 A tapering Flagon, on wide spreading base, with lidded spout, the slightly domed lid with ball thumbpiece, $12\frac{1}{2}$ in. (32cm.) high, no maker's marks, German, mid-19th century

150 A similar Flagon, with worn maker's mark on handle, 10in. (25.5cm.) high, German, mid-19th century

151 A straight-sided French Measure, with wide collar and inset lid, square handle and erect thumbpiece, of litre capacity, $8\frac{1}{2}$ in. (21cm.) high, 2nd half 19th century

152 A straight-sided lidded Tankard, with wide applied base, stepped flat-topped lid and ball terminal, the body engraved subsequently with figures, houses and an inscription, 9½in. (24cm.) high, worn marks within lid, German, circa 1800

153 A TAPERING AND WRYTHEN FLAGON, with spout and urn-shaped knob, slightly domed lid, with erect thumbpiece, standing on three ball feet, the body lightly decorated with bands of wrigglework, 12½in. (32cm.) high, no maker's marks, German, 1st half 18th century



154 AN INTERESTING RELIEF-DECORATED TANKARD, by Jacob Koch II of Nuremberg (1572-1619), the body tapering in towards the lid and divided into three vertical panels each with an oval cartouche with a female figure representing the continents of America, Africa and Europe respectively, the body and domed lid also decorated with cast scrolls, faces and foliage, the lid topped with a shaped knob, the handle being partly concave in section with cast decoration terminating in a scroll, the maker's mark and former owner's wriggled initials on the underside of the base, 7in. (18cm.) high, German, circa 1600

cf. 'Les Etain Francais', p. 474, by Tardy for a similar tankard by another maker

(See Illustration)

155 A Benitier, the rounded bowl with slightly beaded rim, the cross supported by acanthus motifs, 9in. (23cm.) high, worn maker's mark on reverse, Flemish, circa 1800

156 An Oil Lamp, with wide deep base, narrow stem with drip-pan, shallow oil bowl and flat lid, with ball terminal and S-shaped handle, 9½in. (24cm.) high, maker's mark on base, 19th century

157 A small wrythen and lidded oval Box, 3in. (7.5cm.) high, marked on base, late 19th century

158 A Swiss Valais Flagon, with restoration, with pot-bellied body and narrow neck with wide collar and heart-shaped lid surmounted by twin-pomegranate thumbpiece, 11in. (28cm.) high, two heavily obscured maker's marks, one dated 1769, Swiss, 18th Century

159 A SIX-SIDED FLASK, the body heavily decorated with engraved floral motifs, with decorated ring to the lid, 11in. (28cm.) overall, with dated maker's mark and town mark on lid, together with initials H.G.S., possibly Regensburg, by G.A.S., 18th century

160 A plain-rimmed Dish, 14in. (36cm.) wide, by C. Krimer, the rim engraved with a Hebrew inscription and the booge and body with additional engraved decoration, the plate 19th century, German

161 A Nuremberg 'Kaiserteller' after the model by Paulus Oham the younger, the central roundel showing Ferdinand III on horseback, 7½in. (19cm.) diam.

162 A GOOD PAIR OF PRICKET ALTAR CANDLESTICKS, with triform base with heavy embossed decoration on three claw-and-ball feet, with knopped baluster stem and drip pan, 24½in. (61cm.) high, Austrian or German, 18th century (2)

A GROUP OF GERMAN PEWTER

163 A German Flagon with wide base, tapering body, heart-shaped lid with small double domed centre, and decorated "erect" thumbpiece, the body inscribed with two sets of former owners' initials and scroll decoration, the lid and handle with a town mark and the handle also with a maker's mark, 12in. (30.5cm.), by I.E.L., late 18th century



164 A GOOD GERMAN LIDDED TANKARD of slightly tapering form, the flat lid with shallow boss and decorated erect thumbpiece, the body engraved TP in cartouche and the boss LF, 10in. (25cm.) high, the handle bearing town and maker's mark, by H.D., Munich, circa 1730

(See Illustration)

165 A GOOD PECHKRUG or wood tankard with pewter inlay and mounts, the body of slightly tapering form composed of staves of wood inlaid with pewter decoration and bound with pewter, the repoussé decorated flat-topped lid with ball terminal, 8in. (20.5cm.) high, by D.I.W., the maker's mark struck twice inside the lid together with a town mark dated 1746, possibly that of Hirschberg, German, circa 1750

(See Illustration)

166 A RARE GERMAN TANKARD OR KRUG, with unusually shaped body of five flat diamond-shaped sections with triangular intersections, between, the slightly domed lid with baluster finial and strap-shaped handle with erect thumbpiece, the triangular intersections and lid engraved with foliage and the five panels engraved with three portraits of Gallwa, Otto and Vitellius, the remaining two panels inscribed and partly re-engraved, 6½in. (16.5cm.) high, the handle struck with two stars for an unknown maker or house mark, possibly Munich, German, probably 17th century

cf. "Schones Zinn", by L. Mory, fig. 91 for a similar krug

(See Illustration)



167

167 A FINE TANKARD, with slightly concave body broadening to a wider base and mounted on three reeded feet, the body with seven oval-shaped panels delineated by wrigglework and with two bands of wrigglework decoration above and below the panels, the domed cover surmounted with a reeded knob, with an erect mask thumbpiece and strap handle, $7\frac{1}{4}$ in. (18.5cm.) high, former owner's initials TH scratched on handle and with maker's mark, by Hans Jacob Seifertold of Hall, Wurtemberg, German, 17th century



166

(See Illustration)



168 A VERY FINE GUILD FLAGON, of röhren form, the tapering body widening to the lid, with a deep stepped base, the body engraved with scratched decoration and the symbols of a metal-workers craft with the name Harmen Ditmep and dated 1668, the double-domed flat-topped lid also with scratched decoration and with erect thumbpiece and cast highly-decorated handle which bears two makers' marks and town mark, 8in. (20cm.) high, by P.S., probably of Memmingen, German, circa 1670

cf. 'Tin Door de Eeuwen' by A. J. G. Verster, fig. 36, for an undecorated example

(See Illustration)

END OF SALE

© Sotheby & Co., 1975
Plates by Gilchrist Bros. Ltd.
Made and printed in England by
Foister & Jagg Ltd., London & Cambridge