

EIM

# THE OAK INTERIOR

Wednesday 28 March 2018



# Bonhams

LONDON

## LOTS 88 - 123: THE DR JOHN RICHARDSON PEWTER COLLECTION

Dr Richardson, PhD, joined the Pewter Society in 1982. After actively serving as Secretary, Librarian and President, he was made an Honorary Member in 2005. Dr Richardson also proudly served as a Liveryman at the Worshipful Company of Pewterers, and the Worshipful Company of Plumbers.



88

88

### A CHARLES I PEWTER FLAGON, O.E.A.S. QUART, CIRCA 1630

The tapering drum with low single fillet, ovolo-moulded footrim and flat base, the bun cover with rising-baluster finial, and a bar and pierced-heart thumbpiece, apparently unmarked, 42.8 fl.oz., 25.5cm high

£3,000 - 4,000

#### Provenance:

- Ex. Hilbro Collection.
- Sold *Lawrences*, Crewkerne, Somerset, 14th July 1994.

89

### A LARGE JAMES I PEWTER FLAGON, CIRCA 1610

Of typical form, with slightly tapering drum, a knopped bun lid and ovolo-moulded footrim, the rear of the erect thumbpiece stamped with the ownership initials 'PP' below a beaded top edge, maker's mark struck to handle, (PS9153, MPM5911), 70.3 fl.oz., 35.2cm high

£1,500 - 2,000



89

#### Provenance:

- H. H. Cotterell *Genuineness Guarantee Certificate* label no. 1253 to the underside of the lid. Together with the original certificate dated 1st January 1933.
- Ex. M. Rollason Collection. Sold *Christie's*, London, 1972, Lot 34.
- Sold *Christie's*, South Kensington, London, 5th November 1997, Lot 636.

#### Literature:

- Discussed and illustrated *Apollo*, 'Great Pewter Collections II (cont.) - Treasures in the Rollason Collection (Part II)', by Howard Hershell Cotterell, July 1934, pp. 19-21. The author refers to this flagon as 'the finest example it has ever been my pleasure to handle'. The article [with this lot] also includes a sketch of the maker's mark.



91

90

**AN EARLY 19TH CENTURY PEWTER SPOUTED SPIRE FLAGON, ENGLISH**

The plain tapering drum on a ovolo-moulded and reeded footrim, and with a typical droplet below the spout, the double-dome lid with prominent finial and tear-drop pierced chairback thumbpiece, the broken-scroll handle with ball terminal, apparently unmarked, 73 fl.oz., 34.3cm high

£300 - 500

**Provenance:**

-Ex. W. Allen Collection.

91

**AN IMPRESSIVE LARGE CHARLES I PEWTER FLAGON, CIRCA 1630**

Having a typical bun cover with discoid and baluster knop, and a bar and pierced-heart thumbpiece, the single-curve handle with ownership initials 'SR' over 'AC' above the touch of Edward Gibbon, London [fl. 1622-1643], [PS3823, OP5614a], 71.6 fl.oz., 33.8cm high

£4,000 - 6,000

**Provenance:**

-Ex. K. W. Bradshaw Collection, [no. 76].

-Sold *Sotheby's*, Billingshurst, Sussex, 18th March 1997, Lot 366.



92

92

**A YORK STRAIGHT-SIDED PEWTER FLAGON, O.E.A.S. HALF-GALLON, CIRCA 1700**

The tapering drum with multiple broad base fillets, the dome lid with front scroll-profiled projections, a ram's horn thumbpiece and single-curve handle with squat 'spade' terminal, unidentified maker's mark inside base, [PS1042, MPM6231], 84.4 fl.oz., 28.6cm high

£1,200 - 1,800

**Provenance:**

-Sold *Phillips*, Oxford, 7th November 1991.

93

**A GEORGE III PEWTER LIDLESS TAVERN ALE JUG, O.E.A.S. GALLON, CIRCA 1790**

The spouted tapering drum with prominent single mid-fillet, and engraved 'J Francis Coach & Horses Mount Strt', the single-curve handle with filled lug and thumbrest above an engraved ownership triad 'F' over 'IC', touchmark in base of Henry & Richard Joseph, [fl. 1785-1792], [PS5291, OP2687], crowned 'WR' mark and verification mark also to rim, 160 fl.oz., 29cm high

£300 - 400

**Provenance:**

-Sold *Bonhams*, Chester, 12th September 2003, Lot 703.

94

**A QUEEN ANNE PEWTER FOOTED PLATE OR TAZZA, CIRCA 1705**

The plate having a multi-reeded narrow rim, a gentle shallow booge and flat well, and engraved 'R\*Hopkins', the foot with plain cylindrical stem and broad flat base with ovolo-moulded rim, the underside of the plate struck with the hallmarks and touchmarks of Edward Leapidge I, [fl. 1699-1728], [PS5784, OP2893], 10in., 25.3cm diameter, 2in., 5cm high

£300 - 500

**Provenance:**

-sold *Christie's*, South Kensington, London, 9th June 1993.



96

95

**A GEORGE III PEWTER LIDLESS TAVERN 'POT', CIRCA 1780**

The cylindrical flared drum with pronounced mid-fillet and ovolo-moulded footrim, engraved to the front 'Edm Thirkell / Angel Bunhill / Fields', the S-shaped handle with filled lug and ownership triad 'T' over 'E I' engraved to thumbrest, 77.3 fl.oz., 22.5cm high

£500 - 700

**Provenance:**

-Ex. Cyril Jossie Johnson Collection.

-Ex. Jaeger Collection.

-Sold *Sotheby's*, 28th July 1966.

96

**A GEORGE I PEWTER TAVERN POT, O.E.A.S. QUART, CIRCA 1720**

The truncated cone body with high single-fillet, the broad single-curve handle with tongue-thumbrest and boot-heel terminal, crowned 'WR' mark to collar, together with traces of another mark (probably ownership initials), 40.7 fl.oz., 17.5cm high

£1,500 - 2,000



97

97

**A GEORGE II YORK SPOUTED ACORN-SHAPED PEWTER FLAGON, O.E.W.S. GALLON, CIRCA 1750**

The body of typical acorn-shape with broad rim fillet and slender lower fillet, the domed lid with simple knob and ram's horn thumbpiece, the single-curve handle with ridged stylized acorn terminal, touchmark inside base of John Harrison, York [fl.1713-1754], [PS77, OP2162], approximately 124 fl.oz., 33.5cm high

£3,000 - 5,000

**Provenance:**

-Ex. Robert M. Holland Collection [1872-1944].  
-Sold *Sotheby's*, Billingshurst, Sussex, 22nd June 1993, Lot 606 [one of an almost near pair].

**Exhibited:**

Clifford's Inn Hall, Fleet Street, London, 24th February to 26th March 1904, 'Dresser E'. See page 56 of the exhibition catalogue for a line drawing and description.



98

98

**A GEORGE III PEWTER TWIN-HANDLED CUP, WIGAN, O.E.W.S. PINT, CIRCA 1785**

Having a flared seamless bowl with single lines to rim and upper body, a pair of broken-scroll handles with fish-tail terminals, hallmarks to bowl of Samuel Baldwin, Wigan, [fl. 1784-1825], [PS11246], 18.2 fl.oz., 10.4cm high

£500 - 800

Similar cups by the same maker are in the collections of The Worshipful Company of Pewterers of London, [no. 382], and Colonial Williamsburg, Virginia. The latter is illustrated P. Hornsby *Pewter of the Western World* (1983), p. 294, fig. 1006.

For details of the charges payable in addition to the final Hammer Price of each Lot please refer to paragraphs 7 & 8 of the Notice to Bidders at the back of the catalogue.



99



100



101



99

**A GEORGE I/II PEWTER BUD BALUSTER MEASURE, O.E.W.S. GALLON, CIRCA 1720-30**

The body with two pairs of concentric rings level with the lower handle attachment, touchmark to rim of John Carr I, London [fl. 1696-1737], [PS1527, OP814], 131.6 fl.oz., 33cm high

£2,000 - 3,000

100

**TWO PEWTER BUD BALUSTER MEASURES, ENGLISH, CIRCA 1720-60**

One of O.E.W.S quart capacity, having a relatively slender body with pairs of concentric rings, the rim with a crowned 'WR' mark, the underside of the lid with the reverse cast maker's mark of William Bancks, Bewdley, Worcestershire [fl. 1746-1793], [PS71], 33.5 fl.oz., 21.5cm high; the other of O.E.W.S. pint capacity, the body again with pairs of rings and the lid also with a crowned 'WR' mark, 17.4 fl.oz., 16.5cm high, (2)

£300 - 500

**Provenance:**

-Ex. Walter Bucknell Collection.  
-Sold *Sotheby's*, London, 22nd April 1986.

101

**TWO GEORGE I/II PEWTER BUD BALUSTER MEASURES, CIRCA 1720-60**

One of O.E.W.S. half-pint capacity, the top of the lid stamped with the initials 'MB' and the underside plated, 8.6 fl.oz., 12cm high; the other very slender example of O.E.W.S. gill capacity, the body and lid with pairs of concentric rings, 4.4 fl.oz., 10.8cm high, (2)

£300 - 500

**Provenance:**

-Ex. Walter Bucknell Collection.  
-Sold *Sotheby's*, 22nd April 1986.



102

102

**THE LONGFORD FLAGON: AN IRISH PEWTER FLAGON, CIRCA 1710**

Having a tapering drum with broad ovolo-moulded footrim, a flat-lid with flared rim, a twin-lobed thumbpiece and swan-neck handle, the front centre of the drum engraved 'Longford 1710', touchmark in base of James Johnston, Dublin [fl. 1698-?], [PS5249, OP2646], 87.2 fl.oz., 35cm high

£1,500 - 2,000

**Provenance:**

-Ex. Sandy Law Collection.  
-Sold *Phillips*, Chester, 25th September 1997, Lot 112.

**Illustrated:**

D. W. Hall, *Irish Pewter: A History* (1995), p. 27, pl. 26. The author refers to this lot as 'believed to be one of the earliest known Irish flagons'.





103

**A HIGHLY IMPRESSIVE LARGE CHARLES I PEWTER FLAGON,  
CIRCA 1630**

The tapering drum with ovolo-moulded footrim, the bun-lid with broad discoid and baluster knob, a bar and pierced-heart thumbpiece, the handle with maker's mark of Edward Gibbon, London [fl. 1622-1643], [OP5614a, PS3823], 99.6 fl.oz., 38cm high

£5,000 - 8,000

**Provenance:**

-Ex. C. A. Peal Collection.

-Ex. K. W. Bradshaw Collection. An accompanying handwritten note by Kenneth Bradshaw describes this flagon as 'superb'.

-Sold *Sotheby's*, Billingshurst, Sussex, 18th March 1997, Lot 365.



104

104

**A RARE PEWTER 15TH CENTURY BOSSED DISH, ENGLISH**

Having a plain rim, a gentle booge and incised line around a shallow boss, a hammer-in-a-circle quality mark struck to front rim, next to a wrigglework mark, extensive nature's gilding, 26cm diameter

£1,500 - 2,000

**Provenance:**

-Ex. Sandy Law Collection.

-Sold *Phillips*, Chester, 25th September 1997, Lot 54.

105

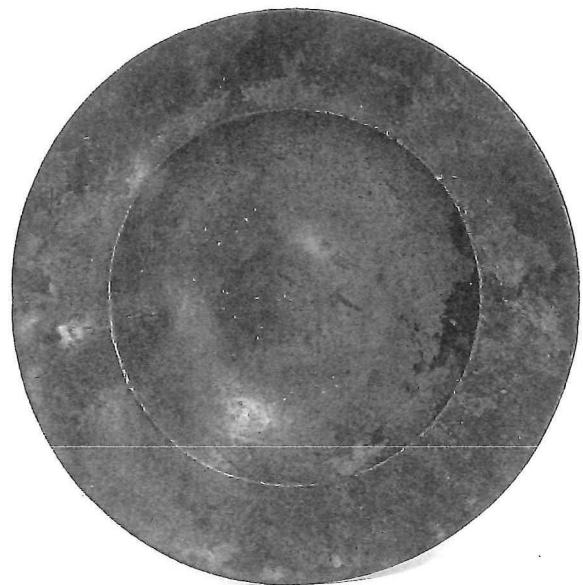
**A 15TH CENTURY PEWTER BOSSED SAUCER**

The plain broad rim with beaded edge to the underside, a deep gentle booge and shallow boss, nature's gilding, 7in., 17.6cm diameter

£700 - 1,000

**Provenance:**

-Sold *Sotheby's*, Billingshurst, Sussex, 22nd June 1999.



105

For details of the charges payable in addition to the final Hammer Price of each Lot please refer to paragraphs 7 & 8 of the Notice to Bidders at the back of the catalogue.



106

106

**A FINE SET OF SIX CHARLES II PEWTER BROAD-RIM PLATES, CIRCA 1670**

Each multi-reefed rim engraved at the top with the ownership triad 'W' over 'W E' within mantling, and struck at the base with the hallmarks of Thomas Haward I, London [fl. 1637-1672], [PS4473, OP2214], the rear of each rim with the touchmark of William Matthews I, London [fl. 1655-1690], [PS6261, OP3140], 9<sup>3</sup>/<sub>16</sub>in., 23.9cm diameter, rim 1<sup>3</sup>/<sub>4</sub>, 4.5cm, [38%], (6)

£5,000 - 8,000

**Provenance:**

-Ex. K. W. Bradshaw Collection.  
-Sold *Sotheby's*, Billingshurst, Sussex, 18 March 1997, Lot 401.  
-Sold *Sotheby's*, London, 28th March 1980, Lot 76. The catalogue description refers to the plates as 'exceptional'.

Two plates each have one triad initial over stamped, which may possibly refer to differing housemarks. The plates were also presumably once part of a larger garnish, as a further single example is known. It is illustrated H. H. Cotterell, *National Types of Old Pewter*, p. 24, fig. 130. The author describes the plate as 'one of the very rarest types of English pewter plates'. It is now in the Worshipful Company of Pewterers of London Collection [1/130].

William Matthews was apprenticed to his cousin, Thomas Haward I, from December 1648 to 1655. According to Haward's will the two men shared a shop at Temple Bar, London. This arrangement continued after Thomas' death and it would therefore appear William continued to use the hallmarks of his former master.

107

**A SMALL JAMES I PEWTER FLAGON, CIRCA 1610**

Of typical form, with plain tapering drum, ovolo-moulded footrim and a knopped bun-lid, the erect thumbpiece with beaded edge and stamped ownership initials 'L' over 'HP' to rear, 47 fl.oz., (3 O.E.W.S. pints), 29cm high

£1,500 - 2,000

108

**A RARE 16TH CENTURY PEWTER SPICE PLATE OR SAUCER, ENGLISH**

With steep shallow boogie and flat well, the plain rim with ownership triad 'T' over 'T I' to front and unidentified maker's mark 'G ?' to rear, 5in., 13cm diameter

£400 - 600

**Provenance:**

-Ex. Sandy Law Collection.  
-Sold *Phillips*, Chester, 25th September 1997, Lot 379.



107



108



109



110



111



109

**A PEWTER DOUBLE-VOLUTE BALUSTER MEASURE, O.E.W.S. GALLON, ENGLISH**

With plain body, the lid engraved 'Ryde Chapel', apparently unmarked, 135 fl.oz., 32cm high

£1,000 - 1,500

**Provenance:**

- Sold *Sotheby's*, London, 22nd April 1986.

110

**A PEWTER DOUBLE-VOLUTE BALUSTER MEASURE, O.E.W.S. QUART, ENGLISH, CIRCA 1800-30**

With plain body, touchmark to rim of Randall Moring, London [fl. 1780-1832], [PS6547, OP3294], 34 fl.oz., 19.5cm high

£300 - 400

**Provenance:**

-Ex. Walter Bucknell Collection.

-Sold *Sotheby's*, London, 22nd April 1986.

111

**THREE PEWTER DOUBLE-VOLUTE BALUSTER MEASURES, O.E.W.S. PINT, HALF-PINT AND GILL, ENGLISH, CIRCA 1800-30**

The pint example having a plain body, 17.9 fl.oz., 16cm high; the other two both with concentric rings to body and crowned 'WR' mark struck to lid, 8.4 fl.oz., 4.0 fl.oz., 12.7cm and 10cm respectively, (3)

£600 - 800

**Provenance:**

-Pint: Ex. Walter Bucknell Collection. Sold *Sotheby's*, London, 22nd April 1986

-Half-pint: Sold *Christie's*, South Kensington, London, 10th April 1991.

-Gill: Ex. Arthur Hibbs Collection. Sold *Lawrences*, Crewkerne, Somerset, 14th July 1994.

112

**A CHARLES II PEWTER 'BEEFEATER' FLAGON, O.E.W.S. HALF-GALLON, CIRCA 1670**

The plain tapering drum with a typically large ovolo-moulded footrim and flat base, the characteristic lid with a twin-cusped thumbpiece, the S-shaped handle struck with ownership initials 'MB' over 'MB', unidentified dated maker's mark inside base, [PS10613, OP6100], 66.5 fl.oz., 26.5cm high.

£1,200 - 1,800

113

**A SMALL JAMES I PEWTER FLAGON, O.E.A.S. QUART, CIRCA 1620**

Having a slender tapering drum with high and low reeded fillet, an ovolo-moulded footrim and 'bullet' base, the bun-lid with a particularly elaborate knop, an erect thumbpiece, and single-curve handle with splayed terminal, 40 fl.oz., 28cm high

£2,000 - 3,000

**Provenance:**

Church of Saint Thomas Becket, Bridford, Exeter.



112



113

For details of the charges payable in addition to the final Hammer Price of each Lot please refer to paragraphs 7 & 8 of the Notice to Bidders at the back of the catalogue.



114

114

**A YORK STRAIGHT-SIDED DOME-LIDDED PEWTER FLAGON, O.E.A.S. HALF-GALLON, CIRCA 1710**

The tapering drum with one rim and two broad plain base fillets, the stepped dome-lid with scroll thumbpiece, the single-curve handle with 'boot-heel' terminal, touchmark in base of Leonard Terry, York [fl. 1701-1748], [PS79, OP4697], 86.7 fl.oz., 29cm high

£1,000 - 1,500

**Provenance:**

The Worshipful Company of Pewterers of London Collection, [no. 143].

**Literature:**

Illustrated and discussed in *A Short History of The Worshipful Company of Pewterers of London and a Catalogue of Pewterware in its Possession*, p. 36 & 39.

115

**AN EARLY 19TH CENTURY PEWTER BULBOUS MEASURE, IMPERIAL GALLON, ENGLISH**

The body stamped 'GALLON' and with an oval 'Imperial GR' medallion above a broad single-fillet, two crowned 'G IV' marks to rim together with various verification marks, 162.8 fl.oz., 27cm high

£300 - 500

116

**A 19TH CENTURY PEWTER BULBOUS MEASURE, IMPERIAL HALF-GALLON, ENGLISH**

The front of the body stamped 'HALF-GALLON' below a reeded single-fillet, the rim with crowned 'VR' mark, 80 fl.oz., 20.5cm high

£200 - 300

117

**A GEORGE I PEWTER CHURCH SPIRE FLAGON, CIRCA 1726**

Having a tapering drum with high reeded fillet, on a splayed and reeded footrim, the double-dome lid with a 'pagoda' finial, a chairback thumbpiece, and double-scroll handle with hooded-ball finial, touchmark near rim, probably of William Newham, London/ Nottingham [fl. 1708-1728], [PS5020, PS6729, OP3373], the drum stamped 'SEATON' over pairs of initials 'WK' 'IH' TC over the date '1726', 72.1 fl.oz., 33cm high

£500 - 800

**Provenance:**

St. Gregory's Church, Seaton, Devon

The initials 'WK' almost certainly refer to William Keate, the rector of St. Gregory's Church between 1710 and 1757. The remaining sets of initials probably belong to his contemporary churchwardens.



117



118

**A GOOD AND WELL-DOCUMENTED YORK STRAIGHT-SIDED  
PEWTER FLAGON, CIRCA 1725**

Having a tapering drum with multiple-reeded base, a dome lid with heart-and-spray thumbpiece, and a single-curve handle with lower strut attachment and rounded terminal, the touchmark inside base of Edmund Harvey, Stockton-on-Tees, Durham [fl. 1721-1781], [PS4396, OP2185], 75.7 fl.oz., 26.5cm high

£4,000 - 6,000

**Provenance:**

- EX. C. Port Collection.
- Ex. Sutherland Graeme Collection.
- Sold *Sotheby's* 3rd June 1965, Lot 83.
- Sold *Sotheby's* 3rd July 1972.
- Ex. G. Sevier Collection.
- Sold *Bonhams*, Chester, 12th September 2003, Lot 660.

**Literature:**

- Connoisseur*, December 1917, illustrated and described in an article written by Charles Port entitled 'Some Uncommon Pieces of Pewter, Part II'.
- Apollo*, July 1933, article written by H. H. Cotterell, 'Pewter: Fine Work of the York Craftsmen', p. 5, figure XII.

**Exhibited:**

- Daily Telegraph Exhibition, Olympia, London, 1928.
- Usher Gallery, Lincoln, 'Exhibition of Pewter in the Usher Gallery', 29th September to 27th October 1962, [no. 73].





119

119  
**A GOOD CHARLES II PEWTER 'FLAT-LID' FLAGON, PROBABLY WIGAN, O.E.A.S. HALF-GALLON, CIRCA 1680**

The tapering drum with high single fillet, the slightly domed and stepped lid with brim pierced denticulations, a double-C and diamond bar thumbpiece, the single-curve handle with acorn terminal, apparently unmarked, 82.7 fl.oz., 30.7cm high

£4,000 - 6,000

**Provenance:**

- Suckley Church, Worcestershire. Sold 8th October 1949, [£1,000].
- Ex. C. C. Minchin Collection.
- Ex. W. Allen Collection. Sold 1993.

**Illustrated:**

*The Journal of the Pewter Society*, Vol. 5, No. 4, Autumn 1986, p. 137.

120  
**THREE PEWTER TRIPLE-REEDED DISHES, ENGLISH, CIRCA 1700**

Two by Wigan makers, one by Adam Bankes IV [fl. 1671-1716], [PS66, OP22A], hallmarks to front rim and crowned rose mark struck twice to rear, together with various wrigglework initials, 16<sup>3</sup>/<sub>4</sub>in, 42.5cm diameter; the other by Christopher Baldwin [fl. 1695-1725], [PS68, OP210], rim with hallmarks to front and touchmarks to rear, 16<sup>3</sup>/<sub>4</sub>in, 42.5cm diameter; the third dish by Richard Smith, London [fl. 1677-1705], [PS8663, OP4374], hammered all-over, again with hallmarks to front, touchmark and crowned rose mark with LON-DON flagged to rear, 13<sup>1</sup>/<sub>4</sub>in., 33.6cm diameter, (3)

£500 - 800

**Provenance:**

The Adam Bankes dish sold *Sotheby's*, Billingshurst, 16th June 1998.

121

**A GEORGE III JERSEY PEWTER LIDLESS HALF-NOGGIN MEASURE, CIRCA 1800**

Woolmer type c, with three verification marks to rim, 2.2 fl.oz., 7cm high

£200 - 300

**Provenance:**

- Ex. Woolmer Collection, [no. 97].
- Sold Sotheby's, Billingshurst, Sussex, 15th September 1998.

122

**A SET OF FIVE WILLIAM & MARY PEWTER MULTIPLE-REEDED NARROW-RIM PLATES, CIRCA 1695**

Each with hallmarks to well and touchmark to rear of James Butcher I, Bridgwater, Somerset [fl. 1689-1698], [PS1241, OP747], the well of each plate also stamped with the ownership initials 'M H' [one with initials reversed], 9<sup>1</sup>/<sub>16</sub>in., 23.2cm diameter, (5)

£1,000 - 1,500

It is possible that the maker's marks may refer to James Butcher's son, [fl. 1698-1720], [PS1242, OP748], although the plates are more likely to be late 17th century in date rather than early 18th century.

123

**AN 18TH CENTURY PEWTER SPOUTED SPIRE FLAGON, O.E.W.S. HALF-GALLON, ENGLISH**

Having a plain tapering drum and beaded splayed footring, the double-dome lid with acorn finial, the acorn design repeated as a droplet below the covered spout, a chairback thumbpiece and broken-scroll handle with hooded ball terminal, hallmarks near the rim of Henry Joseph [fl.1736-1792], [PS5290], or Henry & Richard Joseph [fl.1785-1792], [PS5291], 65.6 fl.oz., 31.5cm high

£400 - 600

**LOTS 124 - 131: PROPERTY FROM THE PRICE GLOVER COLLECTION**

124 \*

**A LATE 17TH CENTURY PEWTER WRIGGLEWORK TALL BEAKER, DUTCH, CIRCA 1690**

The flared drum with narrow ovolo footrim, and decorated with a pair of heron-type birds, each resting on a small mound with their head tilted upwards to a wide garland of pomegranates and tulips, crowned rose touchmark with initials 'H D M' struck to the underside, 6<sup>3</sup>/<sub>16</sub>in., 17.2cm

£400 - 600

125 \*

**A LATE 17TH CENTURY PEWTER WRIGGLEWORK TALL BEAKER, DUTCH, CIRCA 1690**

The flared drum with small ovolo footrim, and unusually decorated at the base with five small figures, possibly playing a ball-game, beneath typical stylized large tulips and scrolling flora, crowned rose touchmarks with initials 'L B' struck to the underside, 6<sup>1</sup>/<sub>2</sub>in., 16.3cm

£400 - 600



124



125

For details of the charges payable in addition to the final Hammer Price of each Lot please refer to paragraphs 7 & 8 of the Notice to Bidders at the back of the catalogue.



126

126 \*

**A GOOD SET OF TWELVE GEORGE II PEWTER ROCOCO FIVE-LOBED DINNER PLATES, CIRCA 1742**

Each rim engraved with the Arms of the EDGCUMBE family, *beneath a baron's coronet, gules, on a bend ermines cotised or three boars' heads coupes, argent*, the supporters on each side, a greyhound argent, *gutté de poix, collared dovetail, gules*, touchmark of Thomas Chamberlain, London, [fl. 1732-1775], [PS1603, OP873], to reverse, diameter 9½in., 24.2cm (12)

£1,500 - 2,000

**Provenance:**

-Mount Edgcumbe and Cotehele House, Cornwall.  
Probably commissioned by Richard Edgcumbe [1680-1758] upon being granted a Baronetcy, *Baron Edgcumbe of Mount Edgcumbe*, in 1742.

The Viscounty, *Viscount of Mount Edgcumbe and Valletort*, was granted in 1781 and an Earldom, *Earl of Mount Edgcumbe* in 1789. See *The Complete Peerage*, London 1936, Vol. IX, pp. 315 - 319.  
-Sold *Sotheby's*, 1st June 1956, Lots 41 to 47.

**Literature:**

See *Journal of the Pewter Society*, Autumn 2014, Vol. 40, pp. 36-39.

These twelve plates originally formed part of a large garnish of at least 153 items. The following Lot is from the same dinner service.

127 \*

**TWO GEORGE II PEWTER ROCOCO FOUR-LOBED OVAL SERVING DISHES, CIRCA 1742**

Each front rim engraved with the Arms of the EDGCUMBE family, *beneath a baron's coronet, gules, on a bend ermines cotised or three boars' heads coupes, argent*, the supporters on each side, a greyhound argent, *gutté de poix, collared dovetail, gules*, no apparent makers' marks but very probably by Thomas Chamberlain, London, [fl. 1732-1775], [fl. 1732-1775], [PS1603, OP873], one 16½in., 43cm wide, the other 15in., 38cm wide, (2)

£300 - 500

**Provenance:**

-The Edgcumbe family, Mount Edgcumbe and Cotehele House, Cornwall.  
-Sold *Sotheby's*, 1st June 1956. Possibly part Lot 53.

See Lot 126.

128 \*

**THREE PEWTER PORRINGERS, ENGLISH, CIRCA 1700**

One with ownership triad 'P' over 'D A' to the Old English-type ear, the bellied-bowl with bossed base and touchmark of 'C B' [fl. 1670-?], [PS1295], to the underside, length 7¼in., 18.5cm; another by the same maker with similar ear and bowl, length 7¼in., 18cm; the third with a single coronet ear, the underside of the boss to the bellied-bowl struck with the dated touchmark of 'IB' [fl. 1688-?], [PS1297, OP5442A], length 7¼in., 18.5cm, (3)

£300 - 500



130

129 \*

**THREE PEWTER PORRINGERS, ENGLISH, CIRCA 1700**

One bearing the touchmark of Richard Dyer, London, [fl. 1699-?], [PS3021, OP1484], to the rear of the Old English-type ear, the bellied-bowl with bossed base, length 7½in., 19cm; another with straight-sided bowl and rim flange, the flat base with narrow footrim and unidentified touchmark to the underside, the single geometric fretwork ear stamped with ownership initials, length 7in, 17.8cm; and a third relatively small example, with crowned ownership triad to the front of the single Old English-type ear, and touchmark of 'T B' [fl. 1675-1725], [PS1373, OP5472] to the rear, the bellied-bowl with a flat base, length 6½in., 16.8cm, (3)

£300 - 500

130 \*

**A PEWTER WRIGGLEWORK FLAT-LID TANKARD, REPUTED QUART, ENGLISH, CIRCA 1680-1705**

The lid and drum decorated with stylized flowers, the drum also centred by a large crown, with pierced ram's horn thumbpiece, the upper handle engraved with the date '1705' and with shield terminal, touchmark inside base, [PS19318], [27.8 fl.oz.], 6½in., 17cm

£2,000 - 3,000

131 \*

**A QUEEN ANNE PEWTER DOME-LIDDED CHURCH TANKARD, TWO REPUTED QUARTS, DATED 1713**

The front of the double-dome lid with broad scroll-profiled projections, the straight-sided drum hammered all-over and engraved *John Jemmatt / John Sadgroves / Church Wardens / 1713*, with scroll thumbpiece and 'spade' terminal to handle, touchmark inside base and scattered hallmarks to rim of John Thomas, [fl. 1698-1733], [PS9312, OP4709], [54.7 fl.oz.], 7¾in., 19.5cm

£700 - 1,000

**Literature:**

In 1928, this flagon was listed as part of the church plate held by the church of All Saints, Rotherfield Peppard. There it is described 'A pewter flagon, with thumbpiece, lid and handle, inscribed JOHN JEMMATT JOHN SADGROVE CHURCHWARDENS 1713. The marks are undecipherable.' See J. T. Evans, *The Church Plate of Oxfordshire* (1928), p. 149.



130



131

For details of the charges payable in addition to the final Hammer Price of each Lot please refer to paragraphs 7 & 8 of the Notice to Bidders at the back of the catalogue.



132

**AN EARLY 17TH CENTURY RELIEF-CAST PEWTER BASIN, A SO-CALLED 'TEMPERANTIA' DISH, NUREMBERG, GERMANY, CIRCA 1610 BY JACOB KOCH II [D. 1619]**

After an original design by François Briot, French [fl. 1545 - 1616] and cast in moulds cut by Casper Enderlein [b. 1560, d. 1633]

The central boss cast with Temperance seated and holding a wine cup and ewer, surrounded by four oval reserves, each decorated with a reclining figure representing one of the four elements [air, water, earth & fire], the rim with eight oval reserves, representing the seven Liberal Arts [grammar, dialectic, rhetoric, music, arithmetic, geometry & astrology], the final reserve depicting Minerva [symbolizing Wisdom], the reserves within strapwork, with masks, demi-figures, winged horses and birds all part of the elaborate design, the maker's crowned rose [best alloy] struck to rear centre, repairs, diameter 17<sup>5</sup>/<sub>16</sub>in, 44.7cm; boss diameter 3<sup>5</sup>/<sub>16</sub>in, 9.2cm

£600 - 800

**Literature:**

See Erwin Hintze, *Die Deutschen Zinngiesser und Ihre Marken* (1964), Vol. 2, No.149:Koch & No.161:Enderlein.

Erwin Hintze refers to Jacob Koch II as 'one of the most important Nuremberg pewterers of his time'. Having trained with an innovator of relief-cast pewter, Nicolaus Horchheimer, between 1572 and 1575, he produced his Masterpieces in Lienhart Prunsterer's workshop in 1583, and became Master in May 1583.

From 1574 Caspar Enderlein trained in Basel, Switzerland, alongside the pewterer Hans Friedrich. He travelled to Nuremberg in 1583/84 as a Pewterer Journeyman and joined the Master Singers Guild. In 1585, he was allowed to produce his Masterpieces in the workshop of Melchior Koch II (Melchior Koch III was a cousin of Jacob Koch II) and the following January became Master Pewterer and Burgher. It is uncertain if Enderlein cast pewter at all during his active period as he appears to have made a successful living from cutting complicated moulds for use by other pewterers. It has been suggested that the moulds were cut in the local, high density, 'Solnhofer stone'. Their design represented a technical breakthrough, as they facilitated multiple castings in relatively high relief. The casts for this dish consisted of some six or seven circular sections, which were then soldered together. A silver and part-gilt copy of the 'Temperantia' basin, known as the 'Venus Rosewater Dish', was made in 1864 by Elkingtons, Birmingham, and is presented each year to the Winner of the Ladies' Singles Wimbledon Championship.

133

**A LATE 17TH/EARLY 18TH CENTURY PEWTER HEAVY-CAST TRIPLE-REEDED CHARGER, ENGLISH, CIRCA 1700 - 20**

Hammered overall, with hallmarks to front rim and touchmark to rear of John Stile, London [fl. 1688 - 1746], (OP4542 PS8950), diameter 20 1/2 in, 51.8cm

£300 - 500

134

**A CHARLES II PEWTER TRIPLE-REEDED CHARGER, CIRCA 1670 - 80**

Hammered all-over and with a narrow style of reeding, various ownership initials engraved and wriggleworked to rear, the front rim struck with the hallmarks of Nicholas Kelk, London [fl. 1638 - 1688], [OP2704, PS5453], the rear also with touch and crowned export rose marks, diameter 22 in, 56.2cm

£300 - 500

135

**A LATE 17TH CENTURY PEWTER HEAVY-CAST TRIPLE-REEDED CHARGER, ENGLISH, CIRCA 1680 - 90**

The rear rim engraved with the ownership initials 'L B' and the inventory 'No. 19', and also struck with the touch and export crowned rose marks of Thomas Powell, London [fl. 1675 - 1715], (OP 3750 PS7471), diameter 22in, 55.9cm

£300 - 500

136

**A 15TH CENTURY 'ACORN' KNOP LATTEN SPOON**

Having a cut-and-filled knob, a diamond-shaped stem and fig-shaped bowl, apparently unmarked, 16cm long

£200 - 300

137

**A GEORGE II PEWTER STRAIGHT-SIDED MUG, O.E.A.S. QUART CIRCA 1740**

The body engraved with the Arms of The Worshipful Company of Carpenters within a scallop-shell surmounted cartouche, a narrow single fillet below, the hollow single-curve handle with hooded-ball terminal, and engraved with the ownership triad 'T' over 'WA', touchmark inside base and hallmarks to rim of William Eddon, London [fl. 1690-1747], [PS2067, OP1503], the rim also struck with crowned 'X' and crowned 'WR' marks, 40.3 fl.oz., 14.7cm high; together with **A SCOTTISH O.E.W.S. HALF-MUTCHKIN TULIP-SHAPED PEWTER MUG**, the plain body with Scottish style paired ownership initials 'IS' over 'MA', possibly by Robert Whyte, Edinburgh, [fl. 1805-1851], [PS10074, OP5130], the S-curve handle with ball terminal, 8.5 fl.oz., 8.2cm high, (2)

£500 - 800

**Provenance:**

The Scottish mug Ex. Michael Boorer Collection.

138

**A JAMES I LARGE PEWTER FLAGON, CIRCA 1615**

The bun-shaped lid with an unusual elongated discoid-knop finial, a substantial erect thumbpiece and tapering drum with ovolo-shaped apron, typically unmarked, 37cm high

£1,000 - 1,500

**Provenance:**

'Collected by a Distinguished Connoisseur', Sotheby's, London, 29 October 2008, Lot 274. The catalogue refers to an indistinct mark to the base.



137



138

For details of the charges payable in addition to the final Hammer Price of each Lot please refer to paragraphs 7 & 8 of the Notice to Bidders at the back of the catalogue.