

EIE

THE PEWTER SOCIETY

Provand's Lordship Club



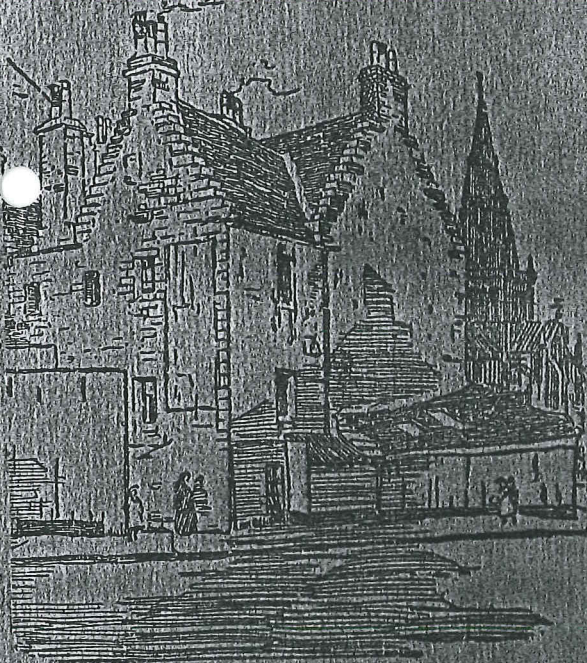
ARMS OF BISHOP MUIRHEAD
ON EAST FRONT

LOAN EXHIBITION
OF
OLD PEWTER
(ECCLESIASTICAL AND DOMESTIC)

SECOND EDITION

1909

PRICE SIXPENCE



PROVAND'S LORDSHIP, GLASGOW
BUILT BY BISHOP MUIRHEAD ABOUT A.D. 1470

CADYON & CO., LIMITED, PRINTERS

CATALOGUE
OF THE
Loan Exhibition
of
Old Pewter

(ECCLESIASTICAL AND DOMESTIC)

HELD IN

PROVAND'S LORDSHIP,

Cathedral Square, Glasgow,

1st January to 31st March,

1909.

SECOND EDITION.

PROVAND'S LORDSHIP.

BUILT BY ANDREW MUIRHEAD,
Bishop of Glasgow, 1455-1473.

PROVAND'S LORDSHIP, the only pre-Reformation house remaining in Glasgow, was built by Bishop Muirhead about 1470; his shield with "three acorns in the bend" can still be traced on the lowest corbie-step facing Cathedral Square.

The building, a typical 15th century town house, formed part of the property of King James IV., who fell at Flodden. He was a secular canon of the Cathedral, and paid frequent visits to Glasgow. On these occasions, as Prebendary of Provand, he would most probably take the Provand stall in the choir at Mass, and occupy this, his own dwelling.

There are strong grounds for the belief that Mary, Queen of Scots, occupied this house in 1567 while visiting Darnley. He lay sick in his father's Glasgow house (the site of which is now covered by No. 23 Castle Street), and was removed thence only to be done to death at the Kirk-o'-Field. The most incriminating of the famous Casket Letters, which brought Queen Mary's head to the block, were therefore, if genuine, probably written within the walls of Provand's Lordship.

Some time after the Reformation the building passed into the hands of the Baillies of Provand; and on the lowest corbie-step facing south may be seen the date 1570, that portion having been added by a member of this family. A broken sun-dial on the south gable also bears the initials "W. B."

After passing through many vicissitudes, the building in 1906 was in danger of demolition; but was then acquired, under burden of a ground-annual, by the Provand's Lordship Club, which was instituted to preserve this, the most ancient and most interesting domestic building in Glasgow, and to foster a living interest in the history and antiquities of our city, by means of lectures, exhibitions, and library. The fee for membership of the Club is 5/- per annum; life membership, £2 2/-; proposal forms may be obtained from the Curator.

The Committee have to express their indebtedness to:

The Corporation of Glasgow for the loan of Show Cases.		
Messrs. R. O. Templeton & Sons	do.	do.
Mr. Alexander Burleigh	do.	do.
Mr. D. B. Innes	do.	do.
Mr. Isaac Low for Gas Installation.		

Provand's Lordship Club.

INSTITUTED 1906.

OFFICE-BEARERS.

Honorary President.

THE MARQUIS OF GRAHAM.

President.

Sir JOHN URE PRIMROSE, Bart.

Vice-President.

ARTHUR KAY, J.P., F.S.A.

Secretaries.

CHARLES A. FORSYTH, C.A., 191 West George Street.

DREDA BOYD, L.L.A.

Recording Secretary.

H. VINCENT WHITELAW, F.S.A. (Scot.)

Honorary Treasurers.

WILLIAM LAMONT, C.A.

Pewter Exhibition Sub-Committee.

Dr. WM. GEMMELL, *Convener.*

LEWIS CLAPPERTON. THOMAS T. WARREN.

ANDREW SMITH. C. E. WHITELAW, F.S.A. (Scot.)

THE Committee take this opportunity of tendering their sincere thanks to the owners of the articles on exhibition for their kindness in lending them. They are specially indebted to the various Kirk Sessions and Vestries who have given the loan of so much interesting and historical church plate.

It is a matter of great gratification to the Committee that this Exhibition, held in a building which, since its erection by Bishop Muirhead about 1470, has, until recent times, had a very close connection with the Cathedral, should present, as they believe it does, the most important collection of ecclesiastical pewter that has ever been gathered together.

The Committee regret that owing to the limited space and the necessity of as much as possible avoiding duplicates they have been unable to avail themselves of the offer of many other pieces, and they trust that the Collectors whose pewter they have found themselves unable to include will appreciate the difficulty the Committee have had in making a selection, and will accept their thanks for offering it.

JUST PUBLISHED. IN ONE HANDSOME VOLUME.
ROYAL 8vo, CLOTH GILT. PRICE 21s.

PEWTER MARKS AND OLD PEWTER WARE, DOMESTIC AND ECCLESIASTICAL. By C. A. MARKHAM, F.S.A. (*Author of "The Church Plate of the County of Northampton," "French Hall Marks on Plate," "Foreign Hall Marks on Plate," and Editor of "Chaffers' Hall Marks on Gold and Silver Plate," &c.*). With upwards of 100 Illustrations, 200 Facsimile Marks, and 1000 Full Descriptions of Touches from the Touch Plates at Pewterers' Hall, as well as other Marks obtained from various sources. List of Members of the Pewterers' Company, from 1450 to the Present Time. Information on the Manufacture, Composition, and Cleaning of Pewter, &c. Royal 8vo, Cloth Gilt, Gilt Top, 21s.

Chaffers' Works on Pottery and Porcelain, and on Gold and Silver Plate are the Recognised Standard Works used by all lovers of the Antique, Dealers, Collectors, Estate Agents and Valuers, and in the Law Courts. These works are constantly revised by their respective Editors, Messrs. F. Litchfield and C. A. Markham, F.S.A.

MARKS AND MONOGRAMS ON EUROPEAN AND ORIENTAL POTTERY AND PORCELAIN. By WM. CHAFFERS. Revised and Edited by F. LITCHFIELD. Over 1000 pages, thick Imperial 8vo, Ornamental Cloth. 1908 Edition, with a Supplement of 50 pages, 42s.

HALL MARKS ON GOLD AND SILVER PLATE. By WM. CHAFFERS. *Ninth Edition.* Extended and enlarged by 260 New Date Letters and Marks. About 400 pages, Royal 8vo, Cloth, 21s.

A HISTORY OF ENGLISH GOLDSMITHS AND PLATE-WORKERS (*Gilda Aurifabrorum*), AND THEIR MARKS STAMPED ON PLATE. By WM. CHAFFERS. Royal 8vo, Cloth, 12s.

COLLECTORS' HANDBOOK OF MARKS AND MONOGRAMS ON POTTERY AND PORCELAIN OF THE RENAISSANCE AND MODERN PERIOD. With upwards of 3000 Marks, selected from his larger work. Crown 8vo, Cloth, 6s.

HANDBOOK TO HALL MARKS ON GOLD AND SILVER PLATE. By WM. CHAFFERS. Third Edition. Edited and extended with over 200 additional New Marks by C. A. MARKHAM, F.S.A. Crown 8vo, Cloth, 6s.

HANDBOOK TO FOREIGN HALL MARKS ON GOLD AND SILVER PLATE (*except those on French Plate*). By C. A. MARKHAM, F.S.A. 5s.

HANDBOOK TO FRENCH HALL MARKS ON GOLD AND SILVER PLATE. By C. A. MARKHAM, F.S.A. 5s.

ARMS AND ARMOUR IN ANTIQUITY AND THE MIDDLE AGES. Also a Descriptive Notice of Modern Weapons. By CHARLES BOUTELL. Crown 8vo, Cloth, 7s. 6d.

A HISTORY OF FURNITURE, together with Chapters on Tapestry, Oriental Embroidery, Bronzes, Ivories and other Figures, Clocks and Timepieces, Metal Work, &c. By ALBERT JACQUEMART. Edited and Translated by Mrs. BURY PALLISER. With Illustrations. Thick Royal 8vo, 31s. 6d.

LONDON: REEVES & TURNER,
83 CHARING CROSS ROAD, W.C.
Full Descriptive Catalogue on application.

A FOREWORD.

PEWTER appeals to the eye in a less obvious way than gold or silver plate, but still its fascination is a strong one. Its sparkle is less aggressive than their glitter, and has less suggestion of splendour and great intrinsic value about it; but its subdued brilliancy and its mellow shadows reflect the light with a soft gleam that makes an oak dresser well garnished with old pewter a source of never-failing charm.

From the comparative softness of the metal, and the necessity of constantly polishing vessels which were in daily use, with the consequent wearing away of any sharp outlines, elaborate ornamentation was early found to be unsuitable, and the oldest specimens are generally characterised by grave and plain forms, designed with a very close reference to the use to which the vessel was to be put. In later times, as in the Georgian period, Pewterers began to fall away from the old dignified styles and to seek to imitate the wares of the Silversmith, with the result that many articles of a shape quite unsuited to the character of the metal and overloaded with heavy ornamentation were produced. Since the old Pewterers died out about thirty years ago a new trade has arisen in the so-called "New Art Pewter," which is characterised by curious shapes and much decoration, often assisted by coloured enamel. It need hardly be said that this kind of pewter has little or no connection with the subject of this Exhibition.

As the articles which were made of this metal were generally those which were in daily use in the Churches and houses of the people of a bygone age, a collection of the kind now brought together has the added interest of illustrating the intimate and everyday life of the past at kirk, at market, and at home.

Pewter was made from very early times and a set of Roman pewter vessels, probably part of a Christian Church service, is preserved in the British Museum. The metal at that time has, by analysis, been discovered to have been composed of tin and lead in the proportion of about 72 parts of the former to 26 of the

TO HIS MAJESTY THE KING



BY APPOINTMENT.

SORLEY

Jewellers and Silversmiths,

93 and 97 ST. VINCENT STREET
(Renfield Street Corner),

GLASGOW

OLD SILVER.

OLD CHINA.

OLD PEWTER,

OLD BRASS,

OLD SILVER,

OLD CHINA,

OLD FURNITURE,

&c., &c.



Muirhead Moffat & Co.

134 DOUGLAS STREET

(Two Doors from Sauchiehall Street),

GLASGOW.

latter. In later times other metals such as copper, brass, antimony, zinc, and bismuth were used instead of, or in addition to, lead.

From the Roman period onwards the art of pewter making was kept alive, and in the Middle Ages the greater part of the Church plate and of the domestic utensils were made of this metal. The Churches throughout Europe replaced pewter with silver plate as their revenues permitted, Scotland from its poverty being perhaps the last country in which the pewter chalice, paten, flagon and alms dish, and the baptismal basin and ewer held their ground. Indeed they may still be found in use in a few outlying districts.

The Pewterers' Company of London, and the Incorporations of Hammermen of Edinburgh, Glasgow, Aberdeen and other Scotch towns endeavoured, for many years with complete success, to organise and protect the craft. In the sixteenth century Acts of Parliament were obtained requiring the marking of pewter with the maker's "touch" or private mark and restricting its sale to the maker's own premises and to open markets, and various Byelaws were passed from time to time as to the examination of applicants for admission to the craft and for preventing self-advertisement, and in other ways sustaining the dignity and honour of the trade.

In the early years of the seventeenth century the Company and the Incorporation began to lose control, and the eighteenth and nineteenth centuries saw the steady decline of the Pewterer's craft and the creeping in of many abuses.

The cheapness of glass, china, and crockery, and the discovery of block tin, nickel, Britannia metal and German silver drove pewter from the inns and from the kitchens of the people, and the Pewterers were too lazy or too much overweighted to fight against extinction. The last touchmark registered at Pewterers' Hall is dated 1824. Mr. James Moyes had a shop in Edinburgh till about 1875, but since then the trade has become extinct, except that a few hardware firms still make pewter measures for public houses. The Church vessels, the domestic plates, spoons, candlesticks, pepper pots, teapots, and the hundred and one other articles of daily use are now made of other material, and pewter has become the quarry of the Collector and an object for exhibition in Museums.



PIANO MAKER BY SPECIAL APPOINTMENT TO
HIS MAJESTY THE KING
HER LATE MAJESTY QUEEN VICTORIA



NEW MODELS

Special attention is called to the
NEW-MODEL BECHSTEIN
PIANOS, both Grands and Up-
rights, with the very latest improve-
ments in construction and design



SOLE AGENTS:

PATERSON, SONS & CO.

:: :: 152 BUCHANAN STREET :: ::
:: :: :: :: GLASGOW :: :: :: ::

CATALOGUE.

CASE A.

1-35. Jacobean Oak Dresser, with a garnish of
Pewter: 10 large plates, 24 smaller plates.

R. M'VITIE, Esq.

CASE B.

CANDELABRA, CANDLESTICKS, and LAMPS were all made
in pewter. In the list of plate and vestments belonging to the
Church of St. Giles, Edinburgh, and dated 27th June, 1559, are
mentioned "twa candelstyks of tin (pewter) of the hie altar."
These were given into the keeping of "Johne Charterhous,
elder, Dean of Guild." In 1561 the plate and vestments were
ordered to be sold for the good of the town, but there was some
difficulty in getting the custodians of the treasures to part with
them, and the keeper of the pewter candlesticks was one of
these.

The forms familiar to us are the pillar and flat candlesticks
of the domestic circle. To the making of them much well-
paid labour of an expert kind was devoted. The simpler they
are in form, and the more graceful in their general effect,
the higher they are esteemed by collectors.

Lamps are rarely found in good condition, and the
specimens here shown are interesting.

36-7. Pair Candlesticks.

JOHN A. FRASER, Esq.

38. Soup Tureen, 14½ in. high, 10 in. diameter,
with mask handles; fruit-shaped knob on
lid. Maker's mark: An Archangel.

CORPORATION OF GLASGOW.

39-40. Pair Candlesticks (Dutch).

Mrs. WARREN.

41. Tithe Jug (French), 16th century.

CORPORATION OF GLASGOW.

42. Candlestick, London stamp.

CORPORATION OF GLASGOW.

43. Covered Jug, 16th century. Maker's mark:
An Archangel.
CORPORATION OF GLASGOW.
- 44-5. Two Bedroom Candlesticks.
R. M'VITIE, Esq.
46. Punch Bowl.
LEWIS CLAPPERTON Esq.
47. Lamp.
Miss CRANSTON.
48. Flat Candlestick.
Mrs. WARREN.
49. Rude form of Candlestick.
LEWIS CLAPPERTON, Esq.
50. Flat Candlestick.
Dr. WM. GEMMELL.
51. Lamp.
WM. ARMSTRONG, Esq.
52. Flat Candlestick.
LEWIS CLAPPERTON, Esq.
53. Lamp.
JAMES BOYD, Esq.
54. Lamp.
Dr. WM. GEMMELL.
55. Flat Candlestick of unusual form.
LEWIS CLAPPERTON, Esq.
- 56-8. Three German Guild Drinking Cups.
ROBERT MELDRUM, Esq.
- 681-2. Two Communion Plates, $16\frac{3}{4}$ in. diameter.
KIRK SESSION OF OLD GREYFRIARS, EDINBURGH.
- 683-4. Two Flagons, flat lids, no beaks, struts to
handles, $8\frac{1}{2}$ in. high.
KIRK SESSION OF OLD GREYFRIARS, EDINBURGH.

CASE C.

59. Plate, shallow, 17 in., stamped on front of
rim, "S. W."; on opposite side of front of
rim, "I. H." No marks.
Dr. WM. GEMMELL.
60. Plate, shallow, 15 inches in diameter. No
marks.
Dr. WM. GEMMELL.
61. Plate, shallow, $16\frac{1}{2}$ inches in diameter.
Mrs. EWING SMITH.
- 62-3. Two Tankards, with lids.
R. M'VITIE, Esq.
64. Beer Cup. Formerly the property of Sam
Bough, R.S.A.
R. M'VITIE, Esq.
65. Cup on foot, with handle.
Mrs. IRVINE.
66. Beer Tankard (German). Engraved, "A
Present from Yarmouth."
R. M'VITIE, Esq.
67. Tankard, with handle. Maker: Galbraith,
Glasgow.
Dr. WM. GEMMELL.
68. College Beer Tankard, with Arms.
R. M'VITIE, Esq.
- 69-70. Two Tankards, glass bottoms, without lids
(Georgian).
R. M'VITIE, Esq.
71. Pepper Castor.
JOHN M. RULE, Esq.
72. Mustard Pot.
Dr. WM. GEMMELL.
- 73-4. Two Pepper Castors.
Mrs. IRVINE.

75. Pepper Castor.
Miss META MACFARLANE.
- 76-9. Four Pepper Castors.
ANDREW SMITH, Esq.
- 80-1. Two Pepper Castors.
REES PRICE, Esq.
- 82-7. Six Pepper Castors.
Dr. WM. GEMMELL.
88. Pepper Castor.
FRA. H. NEWBERY, Esq.
89. Pepper Castor.
JAMES MOYES, Esq.
90. Mustard Pot, square base.
ANDREW SMITH, Esq.
- 91-2. Two Mustard Pots.
Dr. WM. GEMMELL.
93. Mustard Pot.
Mrs. CRAWFORD.
94. Mustard Pot, fluted (Georgian).
ANDREW SMITH, Esq.
- 95-6. Two Salt Cellars (Georgian).
ANDREW SMITH, Esq.
97. Mustard Pot.
Miss META MACFARLANE.
- 98-100. Three Mustard Pots.
R. M'VITIE, Esq.
101. Mustard Pot, pierced.
FRA. H. NEWBERY, Esq.
102. Sauce Boat.
MUIRHEAD MOFFAT, Esq.
103. Small Teapot.
Mrs. DUNN.
104. Snuffer Tray.
Dr. WM. GEMMELL.

- 105-6. Two Teapots.
Dr. WM. GEMMELL.
- 107-9. Three Salt Cellars.
Dr. WM. GEMMELL.
110. Pepper Castor.
WM. SHANKS, Esq.
- 111-12. Two Sugar Castors.
WM. SHANKS, Esq.
113. Large Salt Dish.
Mrs. WARREN.
114. Salt Cellar (Dutch), on wooden feet.
Miss CRANSTON.
115. Mustard Pot.
FRA. H. NEWBERY, Esq.
116. Pepper Castor.
FRA. H. NEWBERY, Esq.
117. Small Salt Cellar.
Miss META MACFARLANE.
118. Mustard Pot.
FRA. H. NEWBERY, Esq.
119. Salt Cellar.
Mrs. IRVINE.
120. Salt Cellar.
R. M'VITIE, Esq.
- 121-2. Two Egg Cups.
R. M'VITIE, Esq.
- 123-8. Six Egg Cups.
Mrs. WARREN.
129. Egg Cup.
Dr. WM. GEMMELL.
130. Salt Cellar.
Dr. WM. GEMMELL.
131. Salt Cellar.
Mrs. WARREN.

132. Tureen, early 18th century.
R. M'VITIE, Esq.
133. Teapot.
Misses LANG.
134. Tureen, George II. period.
R. M'VITIE, Esq.
- 135-40. Six Tumblers, *tempo* Henry IV. (France).
R. M'VITIE, Esq.
- 141-2. Two Sugar Castors.
Mrs. IRVINE.
- 143-4. Two Pepper Castors.
LEWIS CLAPPERTON, Esq.
145. Hanap, for stirrup cup, with coat of arms (German).
R. M'VITIE, Esq.
146. Sugar Castor.
LEWIS CLAPPERTON, Esq.
147. Hot-water Dish, London make, 22 in. by 15 in.
R. M'VITIE, Esq.
148. Oblong Dish, 16 in. by 23 in.
R. M'VITIE, Esq.
- 149-50. Two Salt Boxes (Scottish).
R. M'VITIE, Esq.
- 151-2. Two Sauce Boats, on fixed stands.
R. M'VITIE, Esq.
153. Vegetable Dish, with cover (French).
R. M'VITIE, Esq.

CASE D.

154. Warming Pan, the handle acting as stopper.
ANDREW M'LENNAN, Esq.
- 155-6. Two Hot-water Plates.
M. DOUGLAS ANDERSON, Esq.
- 157-8. Two Jugs.
REES PRICE, Esq.

159. Plate, 14 in. diameter.
RICHARD MORRISON, Esq.
160. Jug, beaked.
FRA. H. NEWBERY, Esq.
161. Highland Dirk, with carved handle and pewter mounts, late 18th century.
CHARLES E. WHITELAW, Esq., F.S.A. (Scot.)
162. Beer Jug (German), mounted in pewter.
REES PRICE, Esq.
163. Highland Dirk, with pewter mounts, middle 18th century.
CHARLES E. WHITELAW, Esq., F.S.A. (Scot.)
164. Sweet Dish.
Dr. WM. GEMMELL.
165. Highland Powder Horn, carved, mounted in pewter, late 17th century.
CHARLES E. WHITELAW, Esq., F.S.A. (Scot.)
166. Earthenware Beer Jug, Faience ware, pewter mounts.
Mrs. WARREN.
167. Drinking Cup, tumbler shaped.
Mrs. CRAWFORD.
168. Barber's Shaving Dish.
R. M'VITIE, Esq.
169. Ship's Candlestick, partly pewter.
FRA. H. NEWBERY, Esq.
170. Drinking Cup, on moulded base.
ANDREW SMITH, Esq.
171. Biscuit Box.
FRA. H. NEWBERY, Esq.
172. Bowl.
Mrs. IRVINE.
173. Wine Cup, plain.
Mrs. WARREN.
174. Wine Cup, chased.
Mrs. WARREN.

175. Tobacco Box.
Dr. WM. GEMMELL.
176. Oriental Dagger, pewter mounts.
Mrs. WARREN.
177. Bowl, $5\frac{1}{4}$ inches in diameter.
Mrs. IRVINE.
178. Drinking Cup, fluted, on foot.
ANDREW SMITH, Esq.

ON WALL.

179. Lavabo or Wall Cistern.
ALAN E. CLAPPERTON, Esq.

CASE E.

SNUFF BOXES.—Fashionable Scotland in the 18th century consumed large quantities of snuff; it was carried about in boxes of various sizes by both gentlemen and ladies, and they applied the contents to their nostrils on all possible occasions.

For personal use, snuff boxes were made of silver, papier maché inlaid with various substances (of which pewter was one), pewter alone, wood, or horn mounted with pewter. In the latter case the material usually employed was the horn of the cow, or ram (Nos. 181-183). No. 181 has an interesting inscription on the lid—"He who is not a friend in a pinch is not worth a snuff." Much more rarely the horn of the deer was used (No. 191). A flat form of horn snuff box, mounted with pewter, is made from a hoof (Nos. 201-7-8). These were furnished with a pewter rim and lid. Most of them were made by a man called Durie, whose only touch appears to have been his name impressed on the under surface of the lid in rather large capitals. Little is known of him, but there seems no doubt that he was a Scottish craftsman, as the pieces he made are all of a purely Scottish character.

Pewter snuff boxes vary a good deal in shape. Here may be seen examples of the curved (No. 194), flat (Nos. 199-200), or hexagonal (No. 190) forms. The latter is unique. It will be observed that some of these are finely chased and engraved, and sometimes the work on them is very delicate and graceful.

- 180-96. Seventeen Snuff Boxes.
Mrs. WARREN.

- 197-201. Five Snuff Boxes.
Dr. WM. GEMMELL.

- 202-6. Five Snuff Boxes.
LEWIS CLAPPERTON, Esq.

207. One Hoof Snuff Box, with spoon.
JAS. MOYES, Esq.
208. One Horse's Hoof Snuff Box, shod with pewter shoe, with masonic emblems on lid. From horse "Eclipse," 1792.
JOHN SCOLLER, Esq.

CASE F.

209. Leaf-shaped Punch Ladle.
Dr. WM. GEMMELL.
210. Soup Ladle.
Mrs. OMOND.
211. Punch Ladle, with whalebone handle.
ANDREW SMITH, Esq.
- 212-13. Two Toddy Ladles.
Dr. WM. GEMMELL.
214. Round-bowled Spoon.
Dr. WM. GEMMELL.
215. Punch Ladle (Scottish).
Mrs. WARREN.
- 216-17. Two Sugar Sifters.
FRA. H. NEWBERY, Esq.
- 218-19. Two Scottish Spoons.
LEWIS CLAPPERTON, Esq.
220. Fork, very rare.
Mrs. WARREN.
- 221-4. Four Round-bowled Spoons.
LEWIS CLAPPERTON, Esq.
225. Round-bowled Spoon.
FRA. H. NEWBERY, Esq.
226. Beggar's Badge, Montrose Parish.
RICHARD MORRISON, Esq.
- 227-8. Two Spoons.
ANDREW SMITH, Esq.
229. Beggar's Badge, Montrose Parish.
LEWIS CLAPPERTON, Esq.

230-1. Two Irish Toddy Spoons, with Shamrock-shaped perforations.

LEWIS CLAPPERTON, Esq.

232-3. Pair Buckles.

Mrs. WARREN.

234. Brooch.

MUIRHEAD MOFFAT, Esq.

235-41. One Single and Three Pairs of Buckles.

LEWIS CLAPPERTON, Esq.

242. Mould for making Pewter Spoons (*circa*, 1690).

Only three other Moulds are known to be preserved—one in Cardiff, one in Isle of Man, and one in the State House Museum, Boston, Massachusetts.

LUDOVIC M'L. MANN, Esq.

Apprenticeship Indentures of James Moyes,
108 West Bow, Edinburgh, dated 8th Oct.,
1829.

Mr. Moyes was the last Pewterer in business in Edinburgh.

CASE G.

243-50. Candlesticks (Three Pairs, Two Single).

R. M'VITIE, Esq.

251. Large Church Plate, with engraved arms, surmounted by a cross, with initials "D.D.B." 19 in. diameter.

Mrs. CLELAND.

252. Engraved Plate, 17 in.

ANDREW M'LENNAN, Esq.

253. Embossed Alms Dish, 16½ in., representing the Annunciation (German).

Mrs. J. A. RALSTON MITCHELL.

254-6. Tankard, 9½ in. high, and Two Small Cups, part of a hunting set, Bewdley mark.

Mrs. CRAWFORD.

257. Gallon Measure, tankard shaped.

ANDREW SMITH, Esq.

258-60. Tankard, 9½ in. high, and Two Small Cups, part of a hunting set, Bewdley mark.

HENRY HAMILTON, Esq.

261. Small Plate. Engraved on back: "N.J."
From Tibbie Shiel's Inn. "M. 1765."

JOHN GARDNER, Esq.

262. Oblong Dish, elaborately engraved, 19½ inches long by 14½ inches in diameter.

FRA. H. NEWBERY, Esq.

263. Plate, showing traces of gilding.

ANDREW SMITH, Esq.

264. Beer Tankard, with lid.

ANDREW SMITH, Esq.

265. Tobacco Jar (English).

Mrs. WARREN.

266. Herb Canister (Dutch).

Mrs. WARREN.

267. Tobacco Jar (English).

Mrs. WARREN.

268. Tobacco Box.

ANDREW M'LENNAN, Esq.

269. Lidded Measure (probably French).

JOHN A. FRASER, Esq.

270. Plate, wavy-edged, 9¾ inches in diameter.
Maker: G. B. Schmidt, Dresden.

REES PRICE, Esq.

271-2. Two Plates (two of a set), wavy-edged.

Mrs. WARREN.

273. Tray on feet, wavy-edged, 10½ inches in diameter (French). Mark partly obliterated.

Dr. WM. GEMMELL.

274. Food Bottle.

REES PRICE, Esq.

275. Beer Tankard (German). Engraved, "D.H., 1754."

JOHN A. FRASER, Esq.

276. Earthenware Beer Jug (German), mounted in pewter.

Mrs. WARREN.

277. Food Bottle.

ANDREW M'LENNAN, Esq.

- 685-6. Two Alms Dishes, each $10\frac{3}{4}$ in. diameter.
Engraved on rim, "Chapel of Banff, 1811."
Maker: W. Scott.

VESTRY OF THE CHURCH OF ST. ANDREW, BANFF
(Scottish Episcopal).

687. Paten, on foot, pellet ornament round rim,
10 in. diameter. Sacred monogram in a
glory in the centre, with engraved inscription,
"Accipite, comedite." Maker: John Home.

VESTRY OF THE CHURCH OF ST. ANDREW, BANFF
(Scottish Episcopal).

688. Flagon, domed lid, crested, beaked, moulded
base, double curve to handle (split), no strut.
No marks.

VESTRY OF THE CHURCH OF ST. ANDREW, BANFF
(Scottish Episcopal).

- 689-90. Two Chalices, double-handed, scalloped
edges, not pairs. Very early and unique.

VESTRY OF THE CHURCH OF ST. ANDREW, BANFF
(Scottish Episcopal).

CASE H.

Early Scottish Church flagons are of a very simple design, and consist of a body with slightly tapering sides, spreading out to form a flat base, finished off with a few mouldings; half-way up another band of mouldings of a simple type is met with, and a similar band is placed immediately below the rim. The older flagons were without beaks or spouts, though a few made at the end of the eighteenth century are also without this feature. The addition of a little drop or ball just below the beak indicates that the vessel is either of late eighteenth or early nineteenth century make. The lower part of the handle in the early flagons was soldered direct to the body of the vessel, but in those of later date the handle was fixed to the vessel by the addition of a small pipe-like piece of metal known as a "strut." Almost without exception each flagon had a lid, usually flat and uncrested, and entirely circular in outline; when a small projecting ear is found on the lid just where the beak ought to be, the flagon is of an early date.

- 278-9. Two Collection Plates. Engraved, "For the
Abby Church, Paisley, 1775." $16\frac{1}{4}$ in.

KIRK SESSION OF PAISLEY ABBEY.



280. Plate, 20 inches in diameter. Engraved on rim, "For the use of Biggar Kirk, 1739." No marks.

KIRK SESSION OF BIGGAR PARISH.

281. Large Lidded Jug, with crest of Shaw Stewart, Bart.

LEWIS CLAPPERTON, Esq.

282. Christening Bowl, Blackfriars, 10½ in.

JOHN GARDNER, Esq.

283. Christening Bowl, Perth, 8 in.

JOHN GARDNER, Esq.

284. Christening Bowl, Ayrshire, 7¾ in.

JOHN GARDNER, Esq.

285. Christening Bowl, N.F. Church, Kilbarchan, 9 in.

JOHN GARDNER, Esq.

286. Chalice (Italian).

Mrs. WARREN.

287. Chalice, Church of England.

R. M'VITIE, Esq.

288. Paten, on foot.

LEWIS CLAPPERTON, Esq.

289. Chalice, Church of England.

R. M'VITIE, Esq.

290. Chalice, Church of England. An old Chalice, which divides into three for convenience of transport.

R. M'VITIE, Esq.

291. Christening Bowl, 11½ in. diameter.

Miss CRANSTON.

292. Christening Bowl, 9¾ in. diameter.

Miss CRANSTON.

293. Christening Bowl, 10 in. diameter.

Dr. WM. GEMMELL.

294. Christening Bowl, 9 in. diameter. Stamped "T. B."

Mrs. IRVINE.

295-7. Three Chalices, Church of England.

R. M'VITIE, Esq.

298. Paten, 9 in. diameter, with raised centre, on which is engraved the sacred monogram in a glory. No marks.

*VESTRY OF OLD ST. PAUL'S CHURCH, EDINBURGH
(Scottish Episcopal).*

299-300. Chalice and Cover. Each engraved with the sacred monogram in a glory.

*VESTRY OF OLD ST. PAUL'S CHURCH, EDINBURGH
(Scottish Episcopal).*

301-2. French Chalice and Paten.

R. M'VITIE, Esq.

CASE I.

303-4. Two Communion Plates, each 18 inches in diameter. Engraved on back, "Bothwell Kirk, 1759." No marks.

KIRK SESSION OF BOTHWELL PARISH.

305. Plate, 13½ in. diameter.

Mrs. EWING SMITH.

306. Communion Plate, 20 inches in diameter. Engraved on rim, "Whittingham Kirk, 1724."

KIRK SESSION OF WHITTINGEHAME PARISH.

307. Collection Plate, deep, 16½ inches in diameter. Engraved round the rim, "For the Church of Carnwath, 1764."

MUIRHEAD MOFFAT, Esq.

308-9. Two Flagons, flat lids, beaked, no struts to handles, 8½ in. high. Maker: S. Maxwell.

KIRK SESSION OF CADDER PARISH.

310. Flagon, flat lid, beaked, no strut to handle, 8½ in. high. Engraved, "A - F - M - A -" Maker: S. Maxwell.

Miss LANDSBOROUGH.

311. Flagon, flat lid, beaked, no strut to handle, 8½ in. high.

ANDREW SMITH, Esq.

- 312-13. Two Flagons, flat lids, beaked, struts to handles, $8\frac{1}{2}$ in. high. Engraved, "For the Abby Church, Paisley, 1775."

KIRK SESSION OF PAISLEY ABBEY.

- 314-15. Two Communion Plates, $16\frac{1}{2}$ in. Engraved on rim, "Govan Congregation, 1793." Makers: Graham & Wardrop, London.

KIRK SESSION OF GOVAN PARISH.

- 316-17. Two Flagons, flat lids, no beaks (small projecting ear to one lid), struts to handles, $8\frac{1}{2}$ in. high. Engraved, "Whittingham Kirk, 1724." Maker: James Coupper.

KIRK SESSION OF WHITTINGEHAME PARISH.

- 318-19. Two Flagons, flat lids, no beaks, no struts to handles, $8\frac{1}{2}$ in. high. Maker's mark: "Let tread" over a rampant dragon. Engraved, "Dazell Chorch."

KIRK SESSION OF DALZIEL PARISH KIRK, MOTHERWELL.

320. Flagon, flat lid, no beak, strut to handle, $8\frac{1}{2}$ in. high. Engraved on band, "Port Kirk." Maker's mark: A crown surmounted by a bear's paw.

Mrs. EWING SMITH.

321. Flagon, flat lid, no beak, no strut to handle, $8\frac{1}{2}$ in. high. Inscribed on lid, "Shesion of Kilbwrnie." Maker: James Maitland.

KIRK SESSION OF KILBIRNIE PARISH.

322. Large Plate, 14 in.

JOHN GARDNER, Esq.

- 323-4. Two Large Plates, Edinburgh mark, $16\frac{1}{4}$ and $13\frac{1}{4}$ in.

HENRY HAMILTON, Esq.

325. Flagon, flat lid, beaked, no strut to handle, $8\frac{1}{2}$ in. high. Engraved: "J. B."
No mark. "M. I."

HENRY HAMILTON, Esq.

- 326-7. Two Flagons, flat lids, no beaks, struts to handles, $8\frac{1}{2}$ in. high. Maker's mark: "Athol" over a pelican feeding her young.

KIRK SESSION OF BIGGAR PARISH.

328. Flagon, flat lid, with spike, beaked, strut to handle, $8\frac{1}{2}$ in. high. Maker: S. Maxwell. (Originally belonging to Bridgeton Relief Church).

Dr. ALEX. MUNRO.

329. Flagon, flat lid, beaked, strut to handle, $8\frac{1}{2}$ in. high. Maker: S. Maxwell.

JOHN GARDNER, Esq.

330. Flagon, flat lid, no beak, no strut to handle. Engraved, "Kirk of Crailing, 1802."

KIRK SESSION OF CRAILING PARISH.

CASE J.

- 331-2. Two Plates, $16\frac{1}{2}$ in. Stamped on rim, "S. H."

Mrs. EWING SMITH.

333. Collection Plate, $16\frac{3}{4}$ in. diameter. Engraved on back, "Relief Congregation, Kilbarchan, 1796."

JOHN GARDNER, Esq.

334. Plate, deep, $16\frac{1}{2}$ in. Maker's mark: An Archangel.

Dr. WM. GEMMELL.

335. Plate, shallow, $16\frac{1}{2}$ in. Stamped on rim, "S. N." No marks.

Dr. WM. GEMMELL.

- 336-7. Two Communion Plates, $18\frac{1}{2}$ in. Engraved on rim, "Norewest Kirk, 1803." Maker: Wm. Scott.

*KIRK SESSION OF ST. DAVID'S PARISH, GLASGOW
(Ramshorn).*

- 338-9. Two Communion Plates, each 20 in. No marks.

*KIRK SESSION OF THE INNER HIGH CHURCH
(Cathedral of Glasgow).*

- 340-1. Two Flagons, English type, each $16\frac{1}{2}$ in. high, domed lids, beaked, no struts to handles. Sacred monogram in a glory engraved upon front. Maker: Vickers, Sheffield.

*VESTRY OF OLD ST. PAUL'S CHURCH, EDINBURGH
(Scottish Episcopal).*

AN
EXCELLENT INVESTMENT

.. in an ..

OLD GLASGOW CORPORATION
can be secured by anyone taking out a Policy
with the

Scottish Amicable

Life Assurance Society.

FUNDS, £5,000,000.

ANNUAL INCOME, £520,000.

Pension for Old Age or Annuity
for Widow.

Insurance Cover at Lowest Cost.

Educational Endowments
for Children.

The Society was originated in 1826 by a few Glasgow men, and can claim special consideration on account of the following among other outstanding advantages:—

LARGE BONUSES.

There are no shareholders and the whole of the Profits belong to the participating Policy-holders, who, at the last division, received a Bonus at the exceptionally high rate of £1 15s. Compound per annum on each £100 assured.

STRONG RESERVES.

The Valuation of Liabilities was made by the most stringent tests applied to any Life Office.

Apply for Prospectus and all information to the

HEAD OFFICE :

35 ST. VINCENT PLACE, GLASGOW.

342. Large Flagon, English type, 15½ in. high, domed lid, heavily moulded, man's mask for thumb-piece, beaked. Maker: Jonas Sonnan Durand, 1683.

A very fine example of a London flagon made at the end of the seventeenth century. Pre-Revolution in date, it is the property of the congregation which at that time worshipped in St. Giles Cathedral, Edinburgh.

*VESTRY OF OLD ST. PAUL'S CHURCH, EDINBURGH
(Scottish Episcopal).*

343. Flagon, domed lid, moulded, no beak, no strut to handle, 15½ in. high. No maker's mark.

JAMES WYLIE, Esq.

344. Flagon, domed lid, beaked, no strut to handle, 17½ in. high. Maker: S. Maxwell.

*KIRK SESSION OF THE INNER HIGH CHURCH
(Cathedral of Glasgow).*

345. Flagon, English make, domed lid, beaked, no strut to handle. Maker's mark: "W. M." over a dagger.

*KIRK SESSION OF THE INNER HIGH CHURCH
(Cathedral of Glasgow).*

346. Flagon, English make, domed lid, beaked, no strut to handle (thumb-piece broken), 18 in. high. Maker's mark: "W. M." over a dagger.

*KIRK SESSION OF THE INNER HIGH CHURCH
(Cathedral of Glasgow).*

347. Flagon, flat lid, beaked, no strut to handle, 18½ in. high. Maker: Wardrop.

KIRK SESSION OF GOVAN PARISH.

348. Collection Plate, deep, 15½ in. Engraved round the rim in large letters, "Free St. Andrew's Church, 1843." Maker: J. Wylie, Glasgow.

MUIRHEAD MOFFAT, Esq.

349. Collection Plate, 13½ in. Engraved, "Cathcart Parish Church, 1852." Maker: H. Reid, Glasgow.

KIRK SESSION OF CATHCART PARISH.

350. Collection Plate, 13½ in.

Mrs. FOUNTAINE-BRODIE.

351. Collection Plate, 15 in. Engraved on rim, "F. C. K." (For Crailing Kirk).
KIRK SESSION OF CRAILING PARISH.
- 352-3. Two Collection Plates, deep, each 14 in. diameter. Engraved round rim, "Govan Church, 1849." No marks.
KIRK SESSION OF GOVAN PARISH.
- 354-5. Two Flagons, flat lids, no beaks, no struts to handles, 11 in. high. Mark: (X) Inscribed on front, below rim, "Bothwell K, 1720."
KIRK SESSION OF BOTHWELL PARISH.
356. Flagon, domed lid, beaked, double curved handle, without strut, 12½ in. high. Sacred monogram in a glory engraved upon front. No maker's mark.
VESTRY OF OLD ST. PAUL'S CHURCH, EDINBURGH
(Scottish Episcopal).
357. Flagon, flat lid, beaked, strut to handle, 8½ in. high. Initials upon handle: "A."
Mark: A crowned rose. "C. R."
VESTRY OF OLD ST. PAUL'S CHURCH, EDINBURGH
(Scottish Episcopal).
- 358-9. Two Flagons, flat lids, beaked, no struts to handles, 14 in. high. Maker's mark on one: S. Maxwell.
KIRK SESSION OF GOVAN PARISH.
360. Flagon, domed lid, beaked, double curved handle, 14 in. high.
VESTRY OF THE CHURCH OF THE HOLY TRINITY, ELGIN,
MORAYSHIRE (Scottish Episcopal).
361. Flagon, flat lid, beaked, no strut to handle, 11 in. high. Mark: A crowned X
KIRK SESSION OF CADDER PARISH.
362. Collection Plate, deep, 14½ in. Stamped on back: "J. M."
"M. D."
Mrs. IRVINE.
363. Collection Plate, 15 in.
KIRK SESSION OF CADDER PARISH.

364. Collection Plate, 15 in. Engraved on rim: "H. H." Marks indistinct.
"M. E."
JOHN M. RULE, Esq.
365. Collection Plate, deep, 14¼ in. No mark.
KIRK SESSION OF BOTHWELL PARISH.
366. Plate, 15 in. No mark.
Mrs. JOHN M'KAIL.
- 367-8. Two Flagons, on moulded bases, no lids, beaked, no struts to handles, 9½ in. high. Maker: Roger Fort, in Cook Street. (Irish Presbyterian Flagons from Lurgan).
ROBERT M'VITTIE, Esq.
369. Flagon, flat lid, beaked, no strut to handle, 8½ in. high. Maker: Stephen Maxwell.
Mrs. EWING SMITH.
370. Flagon, domed lid, beaked, strut to handle, moulded leaves for a thumb-piece, 9 in. No maker's mark.
JOHN GARDNER, Esq.
371. Flagon, flat lid, beaked, no strut to handle, 11 in. high. Maker: S. Maxwell.
JOHN GARDNER, Esq.
- 372-3. Two Flagons, flat lids, beaked, struts to handles. Inscribed on front, "Norewest Kirk, 1803." 8¼ in. Makers: Graham & Wardrop.
KIRK SESSION OF ST. DAVID'S PARISH, GLASGOW
(Ranshorn).
374. Flagon, flat lid, beaked, no strut to handle, 8½ in. high. Maker's mark: "Let Trade" over a unicorn.
KIRK SESSION OF CAMBUSLANG PARISH.
375. Flagon, flat lid, no beak, no strut to handle, 8½ in. high. Engraved on body, "C. L. K." (CambusLang Kirk). No maker's mark.
KIRK SESSION OF CAMBUSLANG PARISH.

ON WALL.

376. Hanging Case of Communion Tokens.

Mrs. CAMPBELL.

CASE K.

- 377-8. Two Communion Cups (Ayrshire).

JOHN GARDNER, Esq.

- 379-80. Two Communion Cups, on bossed stem, $8\frac{1}{4}$ in. high.

RICHARD MORRISON, Esq.

381. Chalice, with decorated border, on stem, 9 in. high. Engraved on front within a border of leaves, "Episcopal Church, Elgin, 1814."

*VESTRY OF THE CHURCH OF THE HOLY TRINITY, ELGIN,
MORAYSHIRE (Scottish Episcopal).*

382. Chalice, on stem, with moulded base, 7 in. high.

Rev. J. B. A. WATT.

383. Chalice, short-stemmed type, 8 in. high.

MUIRHEAD MOFFAT, Esq.

- 384-5. Two Communion Cups.

Miss M. LANDBOROUGH.

386. Communion Plate, $16\frac{1}{2}$ inches in diameter. Makers: Graham & Wardrop, London.

KIRK SESSION OF CAMBUSLANG PARISH.

387. Paten, 10 in. diameter. No mark.

*VESTRY OF THE CHURCH OF ST. MARY ON THE ROCK,
ELLON, ABERDEENSHIRE (Scottish Episcopal).*

388. Alms Dish, $9\frac{1}{2}$ in. diameter, London mark.

*VESTRY OF THE CHURCH OF THE HOLY TRINITY, ELGIN,
MORAYSHIRE (Scottish Episcopal).*

389. Baptismal Bowl, from the Church at Eisnach, date 1699.

(Lutheran).

R. M'VITIE, Esq.

390. Communion Cup.

Mrs. WARREN,

391. Communion Cup. Engraved, "Belonging to the Associate Congregation in East of Fife, 1743."

R. M'VITIE, Esq.

392. Communion Cup, on stem, very wide bowl (early type). Engraved, "Belonging to the Associate Congregation at Lesley. A.D. 1762."

R. M'VITIE, Esq.

393. Communion Cup. Engraved, "Relief Congregation, Colinsburgh, 1801."

R. M'VITIE, Esq.

394. Plate, shallow, 15 inches in diameter. Stamped on back: "A. N."
"I. H."

KIRK SESSION OF BOTHWELL PARISH.

- 395-6. Two Plates, each 15 in.

KIRK SESSION OF CALLANDER PARISH.

397. Collection Plate, deep, $11\frac{3}{4}$ in. diameter. Engraved round rim, "For Biggar Kirk, 1738."

KIRK SESSION OF BIGGAR PARISH.

398. Communion Cup, Church of Scotland.

R. M'VITIE, Esq.

399. Communion Cup. Engraved, "Second Relief Church, Provost Wynd, Cupar, 1831."

R. M'VITIE, Esq.

- 400-3. Four Communion Cups, on stems, 9 in. high.

KIRK SESSION OF KILBIRNIE PARISH.

404. Communion Cup, with shortened stem (early Scottish).

Dr. WM. GEMMELL.

- 405-6. Two Communion Cups, on stems, $8\frac{1}{2}$ in. high by $4\frac{5}{8}$ in. Engraved, "By the Minister and Kirk Session of the Parish of Calander in Monteith for the Use of the Said Parish. August 3d, 1765."

KIRK SESSION OF CALLANDER PARISH.

G. Fountaine-Brodie,

. . . Collector of . . .

Antique Furniture, China, Silver, Sheffield Plate,
Pewter, Brass, Jewellery, and Lace.

London :

"The Ark,"
26 Portugal Street,
Lincoln's Inn Fields.

Glasgow :

288 Renfrew Street,
Charing Cross.
National Telephone—
Charing Cross 207Y5.

TELEPHONES { POST OFFICE, 3453.
NATIONAL, - 3453 ROYAL.

R. STEWART,

CORNER OF

Argyle ^{AND} Buchanan Streets.

MODERN AND ANTIQUE
PEARL AND DIAMOND JEWELLERY.
MODERN AND ANTIQUE SILVER.
MODERN AND ANTIQUE CLOCKS.
CURIOS.

ANTIQUÉ PEWTER.

We specialize in Old Pewter, and invite
Collectors to write us for Photographs
and Descriptive List of pieces in stock,
issued periodically.

H. & A. KIMBELL,
182 ALDRSGATE STREET, LONDON, E.C.

407-8. Christening Bowl, with Wrought-iron Bracket.

KIRK SESSION OF KILBIRNIE PARISH.

409. Christening Bowl, used as a collection plate.

KIRK SESSION OF KILBIRNIE PARISH.

410-11. Christening Set (Basin and Ewer), portion of
rim of Basin cut off. Engraved on rim,
"For the use of the Church of Drumelzier,
1781." Mark, Crowned X

KIRK SESSION OF DRUMELZIER PARISH.

412. Christening Bowl.

Miss M. LANDSBOROUGH

413-14. Christening Set (Basin and Ewer). Engraved,
"Kirk of Balfron. August 16, 1742."

KIRK SESSION OF BALFRON PARISH.

415. Christening Bowl.

JOHN M. RULE, Esq.

416-17. Christening Bowl, with Wrought-iron Bracket.

KIRK SESSION OF LOCHWINNOCH PARISH.

ON WALL.

418-19. Two Cases of Communion Tokens.

Mrs. CAMPBELL.

CASE L.

420. Flagon, flat lid, beaked, strut to handle.

KIRK SESSION OF MUIRKIRK PARISH.

421-2. Two Communion Cups, on stems.

KIRK SESSION OF MUIRKIRK PARISH.

423. Flagon, deep moulded base, domed lid, crested,
beaked, double curved handle, no strut.

*VESTRY OF THE CHURCH OF ST. LAURENCE, LAURENCEKIRK
(Scottish Episcopal).*

424. Baptismal Ewer, with sacred monogram
engraved on front.

*VESTRY OF THE CHURCH OF ST. LAURENCE, LAURENCEKIRK
(Scottish Episcopal).*

- 425-7. Three Chalices (one shortened) of the beaker or tumbler type.

VESTRY OF THE CHURCH OF ST. LAURENCE, LAURENCEKIRK
(*Scottish Episcopal*).

428. Small Plate, used as an alms dish.

VESTRY OF THE CHURCH OF ST. LAURENCE, LAURENCEKIRK
(*Scottish Episcopal*).

429. Small Paten.

VESTRY OF THE CHURCH OF ST. LAURENCE, LAURENCEKIRK
(*Scottish Episcopal*).

- 430-1. Two Communion Flagons, flat lids, beaked, no struts to handles. Each engraved, "Yetholm. M. J. L. M. 1740."

KIRK SESSION OF YETHOLM PARISH.

- 432-3. Two Communion Cups (*Scottish type*), on bossed stems, with moulded bases.

KIRK SESSION OF YETHOLM PARISH.

- 434-5. Basin and Ewer, elaborately fluted (*Italian*).

Mrs. J. A. RALSTON MITCHELL.

436. Large Spoon.

Mrs. CLELAND.

437. Invalid Drinking Cup.

Mrs. CLELAND.

438. Flagon, flat top, crested, beaked, strut to handle.

JOHN RESTON, Esq.

- 439-40. Two Tall, Narrow Flagons.

Mrs. CLELAND.

441. Water Bottle.

Mrs. CLELAND.

- 442-3. Two Large Flagons, flat lids, no beaks, no struts to handles. Each engraved, "For the Use of the Holy Sacrament of our Lord's Supper in the South-east Parioch of Edinburgh. Anno 1688."

KIRK SESSION OF THE TRON CHURCH, EDINBURGH.

444. Communion Flagon, flat lid, no beak, no strut to handle. Engraved, "Linton Kirk, 1767."

KIRK SESSION OF LINTON PARISH, KELSO.

CASE M.

445. Bénitier.

(*Roman Catholic*).
FRA. H. NEWBERY, Esq.

446. Bénitier.

(*Roman Catholic*).
LEWIS CLAPPERTON, Esq.

- 446A. Hanging Bénitier.

(*Roman Catholic*).
Mrs. CLELAND.

447. Laver, Roman amphora shape, moulded base. Traditionally pre-Reformation. 9 in. high, 4 in. diameter across bottom, 2 in. length of lip. Exceedingly rare.

KIRK SESSION OF BIGGAR PARISH.

448. Altar Cruet for Wine, with "V" (for *vinum*).

(*Roman Catholic*).
Mrs. WARREN.

449. Pocket Communion Set, in rough hand-carved wooden case.

(*Roman Catholic*).
LEWIS CLAPPERTON, Esq.

450. Altar Cruet for Wine, with "V" (for *vinum*).

(*Roman Catholic*).
LEWIS CLAPPERTON, Esq.

- 451-2. Two Small Cups, on square bases.

Mrs. WARREN.

453. Communion Cup, short-stemmed type, pellet ornament round top of bowl and round base, $4\frac{1}{8}$ in. high. Latter half of 17th century (*Scottish Presbyterian*). Very rare.

Mrs. WARREN.

454. Chrismatory or Casket, containing three bottles for holy oils (*Early French*).

(*Roman Catholic*).
Mrs. J. A. RALSTON MITCHELL.

- 455-6. Pair Altar Cruets, with long spouts. Purpose unknown; perhaps for oil and water.

(*Roman Catholic*) (?).
LEWIS CLAPPERTON, Esq.

457. Communion Cup, tumbler shaped.

Mrs. CRAWFORD.

458. Communion Cup, tumbler shaped.

HENRY HAMILTON, Esq.

459. Paten, 6 inches in diameter. No marks.

VESTRY OF THE CHURCH OF THE HOLY TRINITY, ELGIN,
MORAYSHIRE (*Scottish Episcopal*).

460. Asperge or Vessel for Holy Water.

(*Roman Catholic*).
LEWIS CLAPPERTON, Esq.

461. Hanging Bénitier.

(*Roman Catholic*).
Mrs. WARREN.

462. Baptismal Jug (German), originally belonging to the Church at Ilmenau, near Weimar. When the Church was presented with new plate, this Jug was given to the Bürgermeister, Herr von Blumröder. It was used at the Christenings of his large family, at several of which Goethe was present.

R. M'VITIE, Esq.

463. Deep Plate, 9 in. diameter.

Miss M. LANDSBOROUGH.

464. Paten, 9½ in. diameter, Edinburgh mark.

VESTRY OF THE CHURCH OF ST. MARY ON THE ROCK,
ELLON, ABERDEENSHIRE (*Scottish Episcopal*).

465. Half of Token Die.

KIRK SESSION OF KILBIRNIE PARISH.

466. Paten, 8 in. diameter. Makers: J. & H. Wardrop.

Rev. J. B. A. WATT.

467. Paten, with deep centre and raised inner rim, 8 inches in diameter. No marks.

Mrs. IRVINE.

468. Paten, 8¼ in. diameter. Mark: Crowned rose.

REES PRICE, Esq.

469. Deep Plate, 9 in. diameter. Engraved on rim, "W. F. C." Maker: J. Wylie, Glasgow.

MUIRHEAD MOFFAT, Esq.

470. Paten, 9 in. diameter, London mark.

REES PRICE, Esq.

CASE N.

- 471-2. Pair Candlesticks.

ANDREW SMITH, Esq.

- 473-4. Pair Pillar Candlesticks.

ANDREW M'LENNAN, Esq.

475. Single Candlestick, Georgian pattern.

ANDREW SMITH, Esq.

- 476-7. Pair Candlesticks, hexagonal.

LEWIS CLAPPERTON, Esq.

478. Tankard (English), 18th century.

Mrs. WARREN.

479. Wine Cup (Dutch). Engraved, "Claus Walkenbarch makes a gift of this Cup to the Corporation of Basketmakers, 1661." (Trans.)

R. M'VITIE, Esq.

480. Covered Tankard (*temp.* Chas.)

ANDREW SMITH, Esq.

481. Covered Tankard (*temp.* Chas.)

R. M'VITIE, Esq.

482. Old Glasgow College Measure, date 1760.

Mrs. FOUNTAINE-BRODIE.

483. Loving Cup.

LEWIS CLAPPERTON, Esq.

484. Porringer, with lovers' knot handles.

LEWIS CLAPPERTON, Esq.

THE STANDARD BOOK ON PEWTER.

Imperial 8vo. With 100 Illustrations. 21s. net.

PEWTER PLATE,

A Handbook for Collectors.

By H. J. L. J. MASSE, M.A.

"Certain to be appreciated as it deserves by connoisseurs. . . It tells us far more than any other work in English as to the art and history of the pewterer's craft."—*Athenæum*.

"This fascinating volume is a veritable encyclopædia of all that is known of the subject treated in it."—*Connoisseur*.

"To the collector and the connoisseur this book will be of the highest value, and will take its place as a standard."—*Daily Telegraph*.

Write for Illustrated Prospectus.

Uniform with this Volume.

Imperial 8vo. With many Illustrations. 25s. net.

SHEFFIELD PLATE,

Its History, Manufacture, and Art.

By HENRY NEWTON VEITCH.

Illustrated Prospectus on Application.

LONDON: GEORGE BELL & SONS,
York House, Portugal Street, W.C.

CALEDONIAN RAILWAY.

A BOON TO TRAVELLERS.

TICKETS issued IN ADVANCE, dated to suit Passengers' convenience, from Caledonian Stations to all Parts of . . .

SCOTLAND, ENGLAND,

IRELAND, AND THE CONTINENT

Can be obtained at

FRAME'S AGENCY,

144 BUCHANAN STREET, GLASGOW.

Seats Reserved and all Information as to Train Service gratuitously given.

Conducted Parties at frequent intervals to PARIS, SWITZERLAND, ITALY, HOLY LAND, &c.

STEAMSHIP PASSAGES BY EVERY LINE OF OCEAN STEAMERS.
ROUND THE WORLD TOURS A FEATURE.

OFFICES AT LONDON, LIVERPOOL, PRESTON, AND EDINBURGH;
and Agencies and Correspondents in Principal Towns at home and abroad.

PHONE—NATIONAL, 1442 ROYAL.
TELEGRAMS—"EXCURSIONS," GLASGOW.

485. Small Covered Tankard (*temp.* Chas.)

HENRY HAMILTON, Esq.

486. Porringer.

FRA. H. NEWBERY, Esq.

487. Quaich. Pewter Quaichs of this size are rare.

LEWIS CLAPPERTON, Esq.

488. Porringer.

Mrs. WARREN.

489. Small Covered Tankard (*temp.* Chas.)

Mrs. CRAWFORD.

490. Porringer.

MUIRHEAD MOFFAT, Esq.

491. Loving Cup.

Mrs. WARREN.

492-3. Pair Candlesticks (Scottish).

Mrs. WARREN.

494. Jug, fluted.

ANDREW SMITH, Esq.

495. Coffee Pot (probably French); 18th century.

LEWIS CLAPPERTON, Esq.

496. Flagon, earthenware, with pewter mountings, domed lid, no beak, 8½ in. high. Engraved on lid, "Regirende Alten, Michel Schneider und Herrman Meyer." Mark on inside of lid: "Kommer" (?)
"17 (Angel) 38."

Mrs. WARREN.

497-8. Pair Candlesticks.

ANDREW SMITH, Esq.

499-500. Pair Queen Anne Candlesticks.

Mrs. J. A. RALSTON MITCHELL.

500A. Double-handled Cup, dated 1690.

ALFRED W. COX, Esq.

501. Spirit Lamp.

Mrs. J. A. RALSTON MITCHELL.

502. Bleeding Bowl or Cupping Dish, graduated in four-ounce spaces.
Mrs. IRVINE.
503. Spirit Lamp.
FRA. H. NEWBERRY, Esq.
504. Coffee Pot, fluted (Dutch).
Mrs. WARREN.
505. Inkpot (Italian).
Mrs. WARREN.
506. Bleeding Bowl or Cupping Dish, graduated in two-ounce spaces.
ANDREW SMITH, Esq.
507. Medicine Measure, double, beaked.
Mrs. WARREN.
508. Pap Boat. These are frequently found in silver, but are rare in pewter.
LEWIS CLAPPERTON, Esq.
509. Bleeding Bowl or Cupping Dish, graduated in ounce spaces.
LEWIS CLAPPERTON, Esq.
510. Hot-water Jug; handle bound with leather thongs.
LEWIS CLAPPERTON, Esq.
- 511-12. Pair Candlesticks.
Mrs. IRVINE.
513. Candlestick.
Dr. WM. GEMMELL.
- 514-15. Laver and Basin (probably Italian).
MUIRHEAD MOFFAT, Esq.
516. Candlestick.
Dr. WM. GEMMELL.
- 517-18. Pair Candlesticks.
ANDREW SMITH, Esq.
519. Herb Canister, on square pedestal.
Mrs. WARREN.

520. Lamb Feeder.
LEWIS CLAPPERTON, Esq.
- 521-2. Two Oval Toilet Trays, wavy-edged, $8\frac{1}{2}$ inches by $6\frac{1}{4}$ inches in diameter. Maker's mark: An Archangel.
Dr. WM. GEMMELL.
523. Spice Box (French), 1732 A.D.
CORPORATION OF GLASGOW.
524. Toilet Tray, embossed with Arms of a Cardinal (French).
Mrs. J. A. RALSTON MITCHELL.
525. Toilet Tray, elaborately moulded, early 18th century, $12\frac{1}{2}$ inches by 7 inches in diameter. Maker's mark partly obliterated, but with date 1751.
Mrs. WARREN.
526. Casket (French), 16th century.
Mrs. WARREN.
- 527-8. Two Plates, each 18 inches in diameter. One stamped on rim: "G."
"I. A."
Mrs. EWING SMITH.
- 529-30. Two Large Platters. One engraved, "George Heriot's Hospital"; the other, "G. H. H."
ROBERT M'VITIE, Esq.
531. Plate, with engraved coat of arms in centre, 21 inches in diameter; said to be those of Rubens, the artist.
MUIRHEAD MOFFAT, Esq.

CASE O.

532. Hot-water Meat Dish, with gravy well, $17\frac{1}{2}$ in. by $13\frac{1}{2}$ in.
A. BURLEIGH, Esq.
533. Plate, shallow, $16\frac{1}{2}$ inches in diameter. No marks.
Dr. WM. GEMMELL.

534. Oval Meat Dish, with gravy well, 26 in. by 21 in. Engraved on rim, a crest over "G. A. C." Maker: Cocks, London.
Miss CRANSTON.
535. Plate, deep, $16\frac{1}{2}$ inches in diameter.
Mrs. EWING SMITH.
- 536-7. Pair Candlesticks.
Miss WATT.
- 538-9. Two Pairs Candlesticks.
JOHN A. FRASER, Esq.
- 540-1. Pair Candlesticks.
ANDREW SMITH, Esq.
542. Single Candlestick.
FRA. H. NEWBERY, Esq.
- 543-4. Pair Candlesticks.
JAMES BOYD, Esq.
- 545-6. Pair Candlesticks.
ANDREW SMITH, Esq.
- 547-8. Pair Candlesticks.
Mrs. CRAWFORD.
- 549-73. Series of Small Plates, 25 in number, 9 in. diameter. Maker: Thomas Brown.
Mrs. EWING SMITH.
574. Plate, 11 in. diameter.
Mrs. EWING SMITH.
575. Plate, $12\frac{1}{4}$ in. diameter.
Mrs. EWING SMITH.
576. Lidded Measure.
FRA. H. NEWBERY, Esq.
577. Lidded Jug (late), with embossed figures of Volunteers.
JOHN M'CREADIE, Esq.
- 578-9. Two Jugs (Flemish).
Dr. WM. GEMMELL.

580. Tankard, flat lid. Engraved: "A. R."
"F. M."
JOHN A. FRASER, Esq.
- 581-6. Six Irish Measures, Cork mark. The gill size is engraved "Noggin."
LEWIS CLAPPERTON, Esq.
- 587-91. Set of Five Flat-lidded Measures (Scottish), beginning 19th century.
LEWIS CLAPPERTON, Esq.
592. Covered Measure, Guernsey mark.
ANDREW SMITH, Esq.
- 593-4. Two Covered Measures, London mark.
ANDREW SMITH, Esq.
595. Highland Shepherd's Staff, oak, with pewter mounts, dated 17—.
CHARLES E. WHITELOW, Esq., F.S.A. (Scot.)
- 596-8. Set of three "Tappit-hen" Shaped Measures, crested type.
1. Tappit-hen.
 2. Chopin.
 3. Mutchkin.
- The Scots Standard Measures before 1707 were as follows:—
- 4 gills=1 mutchkin=3 English Standard gills.
2 mutchkins=1 chopin= $1\frac{1}{2}$ English pints.
2 chopins=1 pint=3 English pints.
- The common or cant name for the Scottish pint when made in a particular shape was a "tappit-hen," and it is found in Scott's Novels and in Jamieson's Dictionary, although both writers are in error as to the capacity of the measure. A well-known old Scots Ballad runs:—
- "Weel she lo'ed a Hawick gill
And leugh to see a tappit-hen."
- This, the crested type, suggests a possible reason for the name. Only the three sizes exhibited are known to exist of this type.
LEWIS CLAPPERTON, Esq.
- 599-600. Two "Tappit-hens," crested type.
Mrs. MATHER.

601-2. Two "Tappit-hen" Shaped Measures, crested type.

1. Tappit-hen.
2. Mutchkin.

Dr. ALEX. MUNRO.

603-4. Two "Tappit-hens," uncrested type.

There seems little doubt that the uncrested type is the older, as evidenced by old paintings and statuary. There is at Linlithgow a 16th century fountain with figures, one of which holds a tappit-hen of the uncrested type.

The Committee have been struck with the very large number of "tappit-hens" offered to them for exhibition, and there is reason to believe that imitations of this type of vessel are being extensively fabricated at the present moment. Lovers of pewter should therefore subject all "tappit-hens" to the closest scrutiny before adding them to their collection.

JOHN SCOULLER, Esq.

605-13. Set of "Tappit-hen" Shaped Measures, uncrested type.

- | | |
|---|------------------|
| 1. $\frac{3}{4}$ gill. | 5. Sma' mutchkin |
| 2. 1 gill. | or 3 gills. |
| 3. $1\frac{1}{2}$ gills. | 6. Mutchkin. |
| 4. 2 gills. | 7. Chopin. |
| 8. Tappit-hen. | |
| 9. Very rare size, capacity $4\frac{1}{2}$ English pints. | |

The largest of this type exhibited is probably unique. Some of the smaller sizes are of later date, perhaps in some cases of the 19th century, and are of English standard. The $\frac{1}{2}$ gill size also exists, and possibly also the $\frac{1}{4}$ gill.

LEWIS CLAPPERTON, Esq.

614. Plate, 12 in. diameter, London mark.

Mrs. EWING SMITH.

615. Inhaler, with rubber tube.

LEWIS CLAPPERTON, Esq.

616. "Tappit-hen" Shaped Measure, uncrested type, capacity 3 gills.

This piece is dated 170—, the last figure being indecipherable. The heavy lid, thumb-piece and handle, and the fact that the low end of the latter is fixed almost directly to the body without the intervening strut which appears in the other examples shown are all characteristic of very early work.

LEWIS CLAPPERTON, Esq.

617-21. Set of Five Flat-lidded Measures. Mark: George IV., Edinburgh.

M. DOUGLAS ANDERSON, Esq.

622-5. Set of Four Irish Noggins.

Dr. WM. GEMMELL.

626. Measure (Georgian).

ANDREW SMITH, Esq.

627. Inhaler.

R. M'VITIE, Esq.

CASE P.

628. Plate, $16\frac{1}{2}$ inches in diameter. Stamped on rim: "R."
"E. M."

REES PRICE, Esq.

629-30. Two Trenchers, each 16 in. diameter.

ARCHIBALD THOMSON, Esq.

631-2. Pair Candlesticks.

Miss STRICKLAND.

633-4. Pair Candlesticks.

HENRY HAMILTON, Esq.

635. Single Candlestick.

R. M'VITIE, Esq.

636-7. Pair Candlesticks.

ANDREW M'LENNAN, Esq.

638. Plate.

FRA. H. NEWBERY, Esq.

639-42. Four Plates, Gadroon border, with Arms of Cresswell-Williams. Maker: Henry Maxted.

R. M'VITIE, Esq.

643. Plate, Gadroon border, similar in design to above; no crest on rim. Maker: George — (obliterated).

CORPORATION OF GLASGOW.

644. Box Inkstand, with sand-dredger and other fittings.

R. M'VITIE, Esq.

645. Cream Jug.

Dr. WM. GEMMELL.

646. Small Sugar Basin.

FRA. H. NEWBERY, Esq.

647. Inkstand.
R. M'VITIE, Esq.
648. Cream Jug.
Mrs. IRVINE.
- 649-50. Small Sugar Basin and Tongs.
LEWIS CLAPPERTON, Esq.
651. Cream Jug.
Mrs. WARREN.
652. Inkstand, with inkpot and sand-dredger.
Miss CRANSTON.
653. Inkstand, with sand-dredger.
WILLIAM R. SAMUEL, Esq.
654. Wine Filler.
LEWIS CLAPPERTON, Esq.
655. Tea Infuser.
LEWIS CLAPPERTON, Esq.
- 656-7. Two Double-ended Measures.
M. DOUGLAS ANDERSON, Esq.
658. Sand-dredger.
Mrs. IRVINE.
659. Thistle-shaped Half-gill Measure.
The use of this Measure was prohibited because, owing to its peculiar shape, the retailer was able to keep back a small portion of the spirit every time he served a customer.
LEWIS CLAPPERTON, Esq.
- 660-1. Two Thimble-shaped Measures. Engraved,
"Just a thimbleful."
LEWIS CLAPPERTON, Esq.
662. One Thimble (quarter-gill) Measure.
M. DOUGLAS ANDERSON, Esq.
663. Box Inkstand, sand-dredger and fittings.
R. M'VITIE, Esq.
664. Hot-water Plate, $9\frac{1}{8}$ in. diameter. No maker's mark.
REES PRICE, Esq.
- 665-6. Two Wavy-edged Plates.
JOHN A. FRASER, Esq.
667. Hot-water Plate.
ANDREW SMITH, Esq.

- 668-9. Pair Candlesticks.
WILLIAM SHANKS, Esq.
- 670-1. "Tappit-hen," with Cup, fitting inside.
Mrs. EWING SMITH.
- 672-3. Two Porringers (Dutch), 6 inches in diameter.
One marked on handle "1733."
Miss CRANSTON.
674. Porringer.
ANDREW SMITH, Esq.
675. Porringer (Dutch), 5 inches in diameter.
Mrs. WARREN.
676. Wine Cup.
Dr. WM. GEMMELL.
- 677-8. Two Early Salt Cellars.
LEWIS CLAPPERTON, Esq.
679. Quarter-gill, "Tappit-hen" shape.
JOHN SCOLLER, Esq.
680. Wine Cup.
Dr. WM. GEMMELL.
- 681-4. *Vide* page 10.
- 685-90. *Vide* page 21.

CASE Q.

BEGGARS' BADGES

Were given by the civic authorities to the deserving poor only, and the recipient had to wear the badge in a prominent position upon the outside garments, or he was liable to suffer various penalties. The idle and dissolute received no sympathy, and were granted no badges, and if they committed any breach of the law, to them no leniency of any sort was shown.

691. Nigg.
692. Kettins, 1741.
693. Comrie.
694. Boharm.
695. Huntly.
696. Kirkwall.
697. Weems.
698. Old Aberdeen, 1722.
699. Aberdeen, 1774.
700. Fraserburgh.
701. Ecclesgreig, 1773.
702. Keith.
703. Kirkcaldy.
704. Ellon, 1742.
705. Dysart.
706. Conveth.

ALFRED W. COX, Esq.

707. Surgeon-Barber's Bleeding Bowl.

ALFRED W. COX, Esq.

708-9. Two Placques in pewter (after Thorwaldsen),
representing Childhood, Manhood, and Old
Age.

Miss TURNBULL.

710-11. Two Communion Plates, $14\frac{3}{4}$ in. diameter.
Maker: Robert Whyte, Edinburgh.

KIRK SESSION OF CULTS PARISH, FIFESHIRE.

712. Collection Plate, deep, $14\frac{3}{4}$ in. diameter.
Maker: Robert Whyte, Edinburgh.

KIRK SESSION OF CULTS PARISH, FIFESHIRE.

713. Baptismal Basin, $10\frac{3}{4}$ in. diameter, of unusual
shape. Inscribed on rim, "Cruden."

"Jany. 14, 1781. After worship, the Sessⁿ met, and being
constitute, gave out as follows:

"For a new pewter Baptism Bason 5ss St^r of which 10d,
was discounted for the old Baptism Bason. o ,, 4 ,, 2 ,, o"

 x x

Rescued from a greenhouse, where it was
found with a fern growing in it.

KIRK SESSION OF CRUDEN PARISH, PORT-ERROLL,
ABERDEENSHIRE.

714-15. Two Communion Flagon, flat lids, no beaks,
no struts to handles (each lid has a small
projecting ear). Both Flagon have engraved
on them:

"Belonging to the Parish of Muthill.

Bought by the Sesion. Anno 1711."

KIRK SESSION OF MUTHILL PARISH, PERTSHIRE.

716-17. Two Chalices, each 9 in. high, quadrangular
in shape; on beautifully moulded bases,
and pillared stems; most uncommon. Have
apparently been silver-plated.

VESTRY OF ST. ANDREW'S EPISCOPAL CHURCH, GLASGOW GREEN.

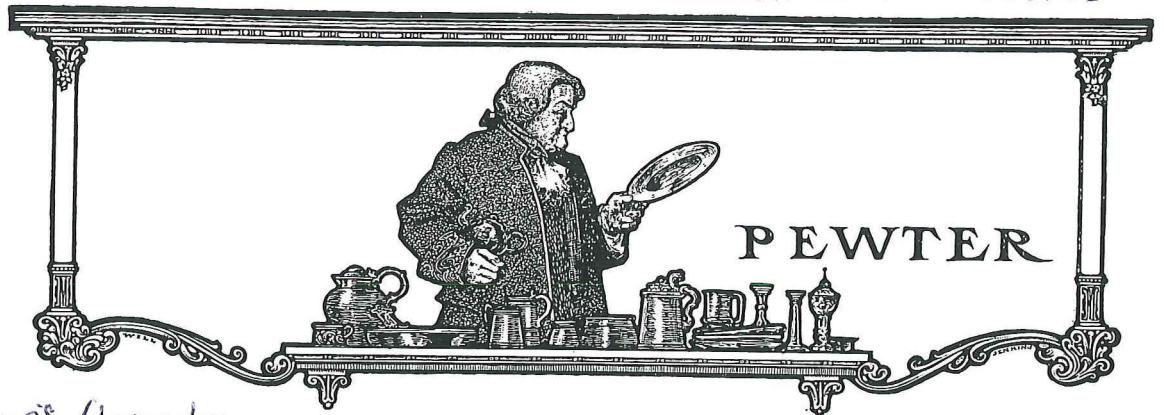
718. Flagon, $8\frac{1}{2}$ in. high, with beak, crest, and strut.
Makers: Graham & Wardrop.

719-20. Two Communion Plates, 11 in. diameter.

721-4. Four Communion Cups, each 9 in. high.
Makers: Jas. Dixon & Sons.

The last seven Exhibits are of interest as being once the
property of the Congregational Church in Hamilton, of which
Dr. David Livingstone's father and mother, and their family,
were members.

Lent by J. M'CALL, Esq.



Lewis Clapperton

Loan Exhibition of Old Pewter (Ecclesiastical and Domestic), Principally Scottish, in Provand's Lordship, Glasgow

AN interesting Loan Exhibition of old pewter was opened on January 1st in Provand's Lordship, Glasgow, and remains on view till March 31st. The building known by this name, the only pre-Reformation

house remaining in Glasgow, was erected by Andrew Muirhead, Bishop of Glasgow, 1450-1473, whose shield can still be traced on the lowest "corbie-step," and was probably at first the house of the Preceptor



Whittingham Kirk, 1724. Abbey Church, Paisley, 1775. Biggar Church. (Pre-Reformation). Dazell Church. Originally belonging to Bridgeton Relief Church.
Collection Plate, 13½ in. Unlidded Flagon from Lurgan. S. E. Parloch, Edinburgh, 1688. Bothwell Kirk, 1720. 9 in. Flagon with spike. Linton Kirk, 1767. Communion Plate, Govan Church, 1793. S. E. Parloch, Edinburgh, 1688. Unlidded Flagon from Lurgan. Maker: Roger Fort.
Two Communion Plates, 20 in., Cathedral of Glasgow. Old St. Paul's, Edinburgh. 16½ in. Cathedral of Glasgow. 17½ in. Govan Church. 18½ in. Old St. Paul's, Edinburgh. Maker: Durand, 1683. 15½ in. Flagon with flat lid and spike. Maker: St. Maxwell, Glasgow. 11 in.

The Connoisseur

or Master of St. Nicholas' Hospital, founded by him in 1460 for twelve indigent old men and a priest in charge. The revenues of this charity, now very small, are still administered by the magistrates and town council of Glasgow; the last vestiges of the hospital itself vanished in 1808. Some considerable time before the Reformation it became the "Manse" or official residence of the Prebendary of Provand, one of the thirty-two prebendaries of the cathedral.

was therefore probably written within the walls of Provand's Lordship. After passing through many vicissitudes, the building was in 1906 in danger of demolition, but a club was formed to lease, and if possible ultimately buy, this the most interesting piece of domestic architecture in Glasgow, and the exhibition has been organised by the Provand's Lordship Club with the view of promoting local interest in the movement. With its thick stone walls,



Kilbirnie.	Callander, 1765.	Kilbirnie.	The Ihnenau Jug.	Associate Congregation in East of Fife, 1743.	Associate Congregation at Leslie, 1762.	Yetholm Church.
	Paten, 8 in.	Paten, 9 in. Old St. Paul's, Edinburgh.	Cruet.	Paten, with deep centre, 8 in.	Paten, 8½ in.	Paten, 9 in.
Chalice and Cover, Old St. Paul's, Edinburgh.	Chalice, St. Laurence, Laurencekirk.	Chalice, St. Andrew, Banff.	Pocket Communion set and case.	Cruet.	Chalice, St. Andrew, Banff.	Communion Cup, Second Relief Church, Cupar, 1831.
	Basin and Ewer, Drumelzier, 1781.		Communion Cup, XVIIIth century.		Ewer and Basin, Kirk of Balfron, Aug. 16, 1742.	

King James IV., who fell at Flodden, was a secular canon of the cathedral, and held the appointments of "Prebendary of Barlanark and Lord of Provand," and on his visits to Glasgow would probably take the Provand stall in the choir at Mass, and occupy this his official dwelling.

There are strong grounds for the belief that Mary Queen of Scots occupied the house in 1567 when she came to Glasgow to visit Darnley, who lay sick in his father's Glasgow house, the site of which is only a few yards higher up Castle Street (so named from the Bishop's Castle which stood close by). The most incriminating of the casket letters, if genuine,

small windows, and rough oak ceilings, supported by heavy oak beams, as sound to-day as when they were put in, it forms an admirable environment for such a show.

The exhibition contains among its seven hundred items much interesting pewter from private collections, but the most striking feature is the magnificent array of ecclesiastical plate lent by over thirty churches, from Banff and Ellon in the north to Yetholm and Linton in the south. Among the finest pieces from parish churches are the Biggar flagon of amphora shape and pre-Reformation date, described at length and figured in Mr. Ingleby Wood's *Scottish Pewter*;

Loan Exhibition of Old Pewter

the two plates of 20 inches diameter, and three flagons, 18 inches high, lent by the Kirk Session of Glasgow Cathedral; the two large flagons from the Tron Church, Edinburgh, engraved "For the Use of the Holy Sacrament of our Lord's Supper in the South-east Parioch of Edinburgh, Anno 1688"; the flagons and plates of Paisley Abbey, engraved "For the Abby Church, Paisley, 1775"; and the

especially those from Lochwinnoch and Kilbirnie, both with wrought-iron bracket, and the basins and ewers of Balfroun (1742) and Drumelzier (1781) parishes. In several instances these vessels have been recently recovered by the Kirk Session after being in private hands and lost sight of for many years.

From Episcopal churches there are some fine



<i>Porringer.</i>	<i>Bleeding Bowl.</i>	<i>Papboat.</i>	<i>Quaich.</i>	<i>Inkstand.</i>	<i>Bleeding Bowl.</i>	<i>Bleeding Bowl.</i>
<i>XVIIIth Century Tankard.</i>	<i>Loving Cup. Spirit Lamp.</i>	<i>XVIIIth Century Tankard.</i>	<i>Cupping Dish.</i>	<i>XVIIIth Century Tankard.</i>	<i>Loving Cup, dated 1690.</i>	<i>XVIIIth Century Tankard.</i>
<i>Tankard. Bewdley mark.</i>	<i>Wine Cup. Bewdley mark.</i>	<i>Guild Cup. Circa 1700.</i>	<i>Salt Cellar.</i>	<i>Jug, 15½ in. (Scotch.)</i>	<i>Salt Cellar.</i>	<i>Wine Cup, Bewdley mark.</i>
						<i>Gallon Tankard.</i>

flagons of Whittinghame (1724), Govan (1793), Bothwell (1720), and Linton (1767).

There is a fine collection of Presbyterian communion cups, among which may be specially mentioned four from Kilbirnie parish, and two from Callander, engraved "By the Minister and Kirk Session of the Parish of Calander in Monteith for the use of the Said Parish, August 3rd, 1765"; but the finest example of this class is probably the seventeenth-century cup of short-stemmed type, 4½ inches high, with very wide bowl and rough pellet ornamentation on brim and base, lent by a private collector. There are also on exhibition many baptismal basins,

examples, such as the two very uncommon chalices from the church of St. Andrew, Banff, with flat bottoms, double handles, and scalloped edges; the set of sacramental vessels from the church of St. Laurence, Laurencekirk, the chalices being of a beaker or tumbler type; and the flagon, by Durand, dated 1683, from Old St. Paul's, Edinburgh.

Among the notable pieces from private collectors are a pocket communion set in a roughly carved wooden case; a baptismal jug originally belonging to the church at Ilmenau, near Weimar, and afterwards to the Bürgermeister, and used at the christenings of his large family, at several of which Goethe was

The Connoisseur



○	<i>German Tankard.</i>	<i>Thistle-shaped Measure.</i>	<i>Jug.</i>	<i>Thimble-shaped Measure.</i>	<i>Tappit hen with Cup.</i>	<i>Thimble-shaped Measure.</i>	<i>Jug.</i>	<i>Double Whisky Measure.</i>	<i>German Tankard.</i>
	<i>Set of 4 Irish Measures.</i>	<i>Uncrested Tappit hen-shaped 3-gill Measure, dated 170—.</i>	<i>Set of 3 Crested Tappit hen-shaped Measures.</i>					<i>Set of 9 Uncrested Tappit hen-shaped Measures, the largest holding 4½ English pints.</i>	
	<i>Coffee Pot.</i>	<i>Plate, Gadroon and mask edge.</i>		<i>Tray, wavy edged.</i>				<i>Plate, Gadroon and mask edge.</i>	
		<i>Set of 5 flat-topped Scots Measures, temp. George IV.</i>						<i>Set of 6 Irish Measures. Cork mark.</i>	

present; three German guild cups, *circa* 1700; a seventeenth-century spoon-mould, of which only four examples are known; a fine pair of large tankards with the Bewdley mark; several seventeenth-century covered tankards; a pap-boat; a loving-cup dated 1690; a quaich (only two examples were known to Wood, both being in museums); a barber-surgeon's cupping-dish; three bleeding-bowls (graduated in 1 oz., 2 oz., and 4 oz. spaces respectively); many sets of measures, including a set of nine tappit hen-shaped measures of different capacities, the

largest one, of 4½ English pints, being probably unique; and a collection of eighteen beggars' badges. These were pewter medals given to the respectable poor of a parish, and worn on the outer garment as a sign that the bearer was a licensed mendicant. The wearers were known as "gaberlunzie-men."

Many other exhibits of great interest are to be found in the cases, and are described in the carefully prepared catalogue, but space does not permit a more detailed account.

