

EHM

Antique Collectors Fund April 1973



Small brass Barber's Bowl and brass Pepper Pot, circa 1800, with two unusual Pounce Pots in latten, circa 1700



Rare early Bronze Bowl, excavated near Zwolle in Holland, circa 1400. (5½ in. diam)

ROBIN BELLAMY

81 Corn Street
WITNEY
OXFORDSHIRE

Witney 4793



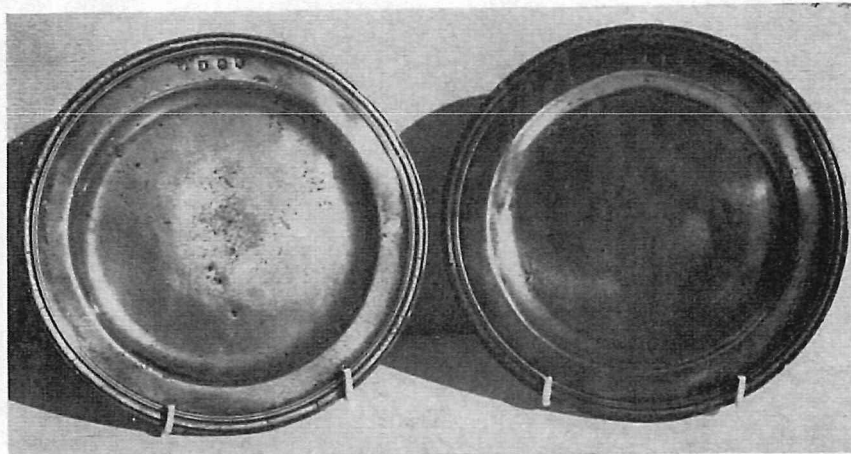
Left: Most unusual James I Flagon with lip, 13½ in. to thumbpiece. No maker's marks. A similar, but later Flagon is in the Victoria and Albert Museum.



Above: Three of several brass, bell metal or bronze decorated Mortars of the seventeenth or eighteenth centuries. The largest is 5 in. high



Narrow Rimmed Plate, one of the rarest of the seventeenth century style of platters. Circa 1680



Pair of Triple Reeded Plates by John Tubb, circa 1690