

EDG

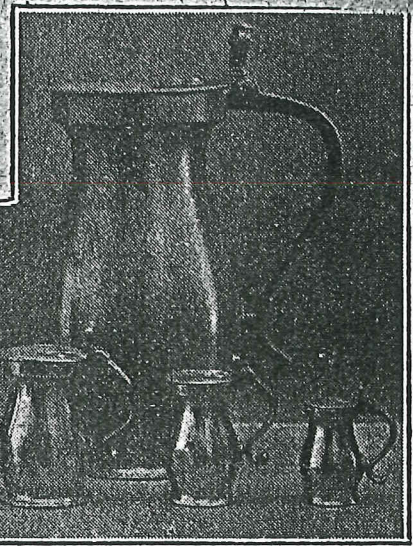
WONDERFUL PEWTER DISPLAY for OLYMPIA.

Collection for Loan Section Unapproached in Scope or Size:
Remarkable Pieces Sent by Private Owners.

Organised by

HOWARD H. COTTERELL,
F.R.Hist.S.

Hitherto unapproached in scope or size, the remarkable collection of pewter—the organisation of which is in the capable hands of Mr. Howard H. Cotterell, F.R.Hist.S.—to be exhibited in the Loan Section of "The Daily Telegraph" Exhibition, will illustrate the history of this fascinating metal from its earliest forms to the summit of the modeller's achievement. In many cases, some of the pieces, which come from private collections, have never before been publicly exhibited; certainly never before has the collecting public had an



Set of "double voluts" baluster measures in the Harry Walker collection.

set of "Bristol" type measures of the early nineteenth century illustrates yet another phase in the pewterer's craft. A "capstan" salt, 3 inches high, the diameter at the base being 3½ inches, and



Cube-shaped Irish salt, by Silvester Savage, of Dublin (c. 1800), (Carrick Webster collection.)



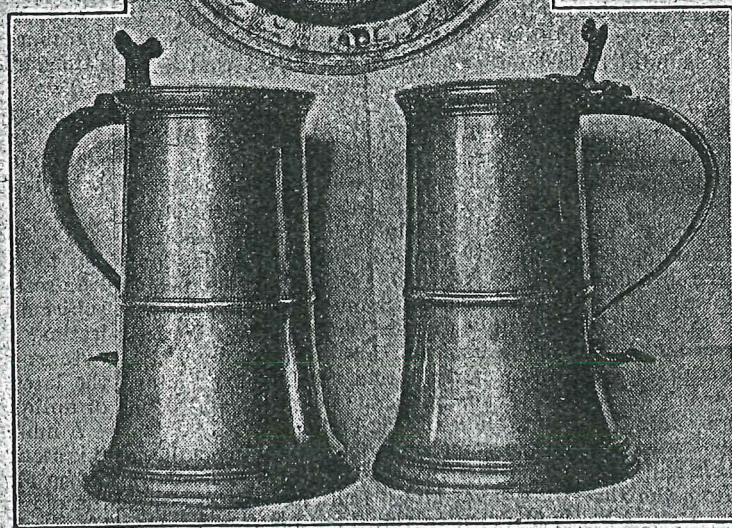
Fine mid-16th century flagon from the collection of Major S. John Thompson, D.S.O.



Early 17th century English flagon. (From collection of W. D. Thomson, Esq.)

opportunity of inspecting such a wonderfully comprehensive display. The name of the organiser is a sufficient guarantee for the authenticity and interest of the beautiful specimens that form the collection.

A few are here shown and are noteworthy for their extreme rarity and beauty. Of the value of the other pieces which will be included in the display those described below are a sufficient indication. From the Sutherland-Graeme collection comes an extremely fine alms plate, 8½ inches in diameter. A



Above: Engraved plate of the early 17th century in the Carrick Webster collection. Below: Pair of Scottish type flat-lid flagons made by the London maker, W. Eden (circa 1775). These (as are all the other specimens shown on this page) are to be exhibited in the Loan Section of the Daily Telegraph Exhibition.

that at the top 2½ inches, is being brought from the collection of E. W. Turner, Esq., M.A., while a remarkable chalice and paten, circa 1650, both by the same maker, will be shown from the Young collection.

The flagons will be of particular interest, four of them being shown on this page. The earliest of these is an English specimen from Mr. W. D. Thomson's collection, while the pair of Scottish type flat lid date from about 1775.