

Swiss flagons and tankards - some notes.



Please note:

**These notes were produced to illustrate a talk given
in March 1996.**

Jan Gadd, June -95.

Swiss flagons and tankards - some 17th/18th.

Bauch flagons (Bauchkanne).

From Bauch = "gut" or abdomen.

Also known as Wallis Wine Flagons.

Squat, round main body on raised, "concave-on-convex" foot ring.

Tall neck with a band half way up.

Wide, funnel like top with formed spout.

Flat, heart shaped lid (French style);

small flagons often without finial but with

double acorn on wedge thumb piece,

medium size sometimes with dolphin or

ram's head finial and double acorn thumb piece,

large size often with ram's head finial and

double ram's head thumb piece and with a

pewter chain from two knobs.

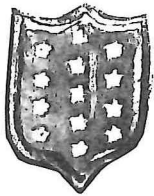
Strap handle. Marks on lid.



Bauch flagons

Common in; Town, area, mark

Wallis Canton (Brig etc)



Geneva



Vevey

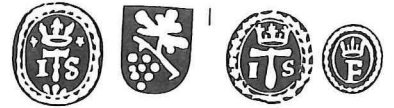


Typical makers, marks

Pier Antoin Simiaval, c. 1750, W



Joan Storno, c. 1750, W



Giovanni del Barba, c. 1830, W



J. Alvazzi, c. 1790 W



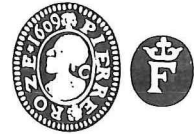
Alvazzi e Castel, c. 1810, W



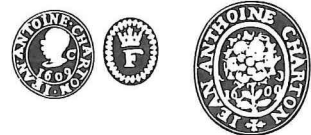
Paulo Giuseppe Maciago, c. 1780, Brig W



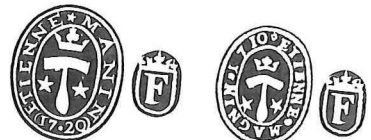
Pierre Roze I and II, c. 1660 and 1690 Geneva



Jean Antoine Charton, c. 1690, Geneva



Etienne Magnin, c. 1710-20, Vevey



Pierre-André Utin, c. 1730, Vevey



Kelch flagons

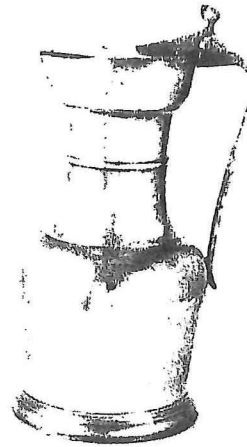
From Kelch = goblet, (turned upside down).

Mainly French speaking area.

Shouldered main body on a low, splayed foot, (similar to a Normandy Flagon).

All other features from shoulder up identical to the Bauch Flagon.

Rarely decorated. Marks on lid.



Common in; Town, area, mark

Typical makers, marks

Wallis (Brig etc)

Alvazzi e Castel - see above



Paulo Giuseppe Maciago, - see above

Geneva

Jean Bourelier, c. 1720, Geneva



Jean Antoine Charton, - see above

Lausanne

Frédéric Reuchlin, c. 1780, Lausanne



Vevey

Pierre-André Utin, -see above





Stize Flagons

Mostly flared barrels similar to Strasbourg/Württemberg styles.

Marks normally on handle.

Type I - Schnabelstize:

Schnabel = beak suggests the name of this spouted flagon.

Mostly Germanic spouts with double facets but single faceted or smoothly curved spouts not uncommon.

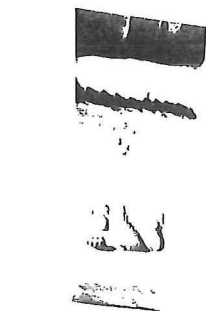
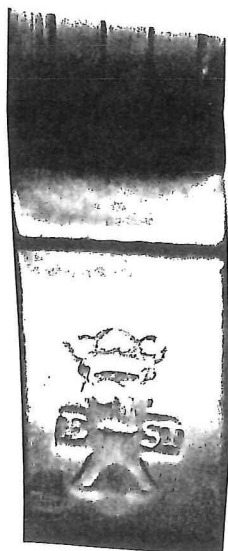
Invariably a single dome lid to hold heart shaped spout cover, sometimes with an upturned "nib", with or without finial.

Zürich/Basel types mostly with finials.

Mostly Chair thumb piece with "turned" top ridge and a similar "turned" feature at the handle terminal. Feather thumb piece not uncommon on all Stizen.

Strap handle.

Midriff banding uncommon.



Stize Flagons

Type I - Schnabelstize

Common in; Town, area, mark

Chur



Zürich



Basel



Zug



Zofingen



Typical makers, marks

Herkules de Cadenath II, c. 1750 Chur



Johann Ulrich Bauer III, c. 1750 Chur



Mathaeus Bauer II, c. 1790 Chur



Hans Heinrich Bosshard, c. 1760 Zürich



Anna Elisabeth Manz, c. 1780 Zürich



Johannes Weber, c. 1750 Zürich



Johann Zimmermann I and II, c. 1750 and 1800 resp.



Niklaus Übelin I and II, c. 1680 and 1720-30 resp. Basel



Emmanuel Streckeisen I, c. 1770-80, Basel



Emmanuel Scholer IV, c. 1750, Basel



Joachim Leonz Keiser, c. 1770, Zug



Daniel Rudolf I, c. 1740, Zofingen



Type II - Stize:

Formed spout and flat, heart shaped lid sometimes with a protruding "dent" as a finial or with a central dome holding a cast finial. Other features are similar to the Schnabelstize. Midriff banding uncommon.

Production areas and makers: see Type I.



Type III - Bartmannstize:

Bart = beard and the name "Bearded Man Flagon" was given to these flagons with a relief cast spout in the shape of a man's head.

Common in; Town, area, mark

Solothurn



Zofingen



Typical makers, marks

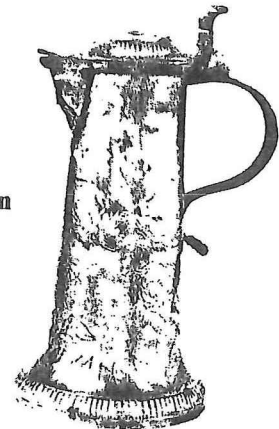
Wolfgang Meyer, c. 1700, Solothurn



Joseph Graff, c. 1730, Solothurn



Johann Friedrich Lang, c. 1750, Zofingen



Type IV - Freiburgstize:

Straight sided, tapering barrel up to a band, some 2/3 up the barrel and from there cylindrical up to the lid. (Looks like an acoustic loud hailer.) Other features as per I and II above. *Solothurnstizen* too have almost straight sided barrels but all the way to the lid. *tapering*

Common in; Town, area, mark

Freiburg

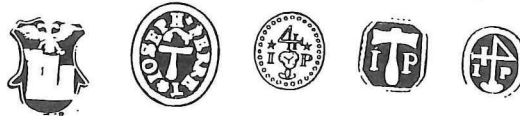


Solothurn



Typical makers, marks

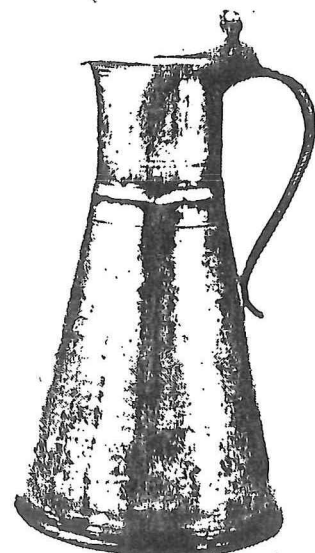
Joseph Perret, c. 1700, Freiburg



Guérin Bernard, c. 1710, Freiburg



Wolfgang Meyer, c. 1700 - see above



Glocken flagons (Glockenkannen)

Bell shaped with hinge-lidded hexagon spout, bayonet-locking lid with fixed circular carrying handle. Types from Schaffhausen and Elgg often with screw top. Types from Elgg also often with screw-on spout lid with safety chain. Mostly with name shield on barrel, fixed at an angle. Often engraved on barrel around spout. Marks on spout lid.



Common in; Town, area, mark
Zürich



Elgg



Schaffhausen



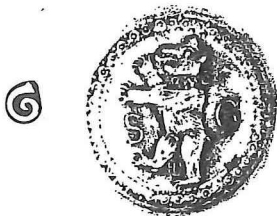
Steckborn



Zug



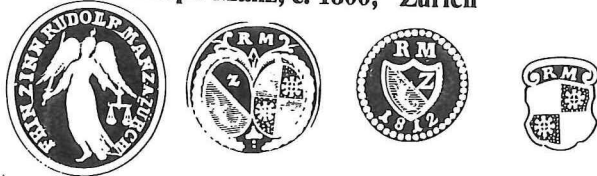
St. Gallen



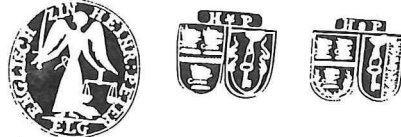
Typical makers, marks

Hans Heinrich Bosshard, - see above, Zürich

Hans Rudolph Manz, c. 1800, Zürich



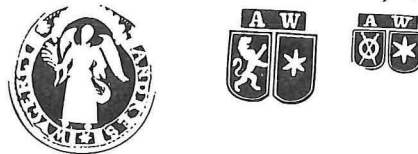
Johann Heinrich Peter, c. 1800, Elgg



Andreas Moser, c. 1790, Schaffhausen



Andreas Wüger IV, c. 1790-1800, Steckborn



Joachim Leonz Keiser, see above Zug

Hans Jakob Schirmer, c. 1720, St. Gallen



George Stähelin, c. 1740, St. Gallen

Prismen flagons (Prismenkannen)

Six or eight-sided flagons with hexagonal hinge-lidded spout and screw top lid with carrying ring. Octagonal types rare. Also known as "Screw-top flagons" (Schraubenkannen). Both Glocken and Prismen types made without spouts (bottles). Screw-on spout lid with a safety chain not uncommon.

Often well engraved. Marks on spout lid.

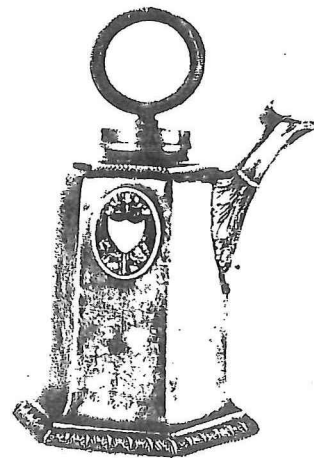
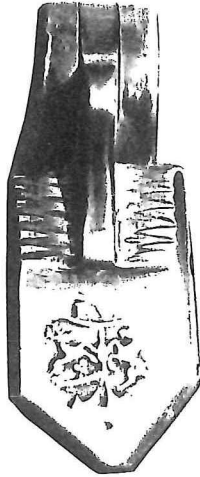
Three barrel shapes can be observed;

1. Without a foot.

2. With a small, flared foot.

3. "Kranzkanne" or wreath flagons flare out towards a relief cast foot.

(Lange of Chur)



Prismen flagons (Prismenkannen)

Common in; Town, area, mark

Typical makers, marks

Chur



Johann Ulrich Bauer III, - see above, Chur

Mathaeus Bauer II, c. 1790, Chur



Johann Jakob Ulrich Bauer, c. 1820, Chur



Heinrich Wilhelm Lange, c. 1840, Chur



Zürich



Hans Heinrich Bossard - see above

Anna Elisabeth and Hans Rudolph Manz - see above

St Gallen

Abraham and Adrian Hiller I, c.1750 and 1780, St. Gallen



Steckborn

Andreas Wüger IV - see above, Steckborn



Bern flagons

Type I - Kürbiskanne

Kürbis = gourd (or pumpkin)

Circular body on a raised, sometimes square-sided foot. Tall, often slender neck with or without banding ending in a funnel like wide rim with a shaped spout. French style heart shaped lid. Often the characteristic "question mark" handle. Often plain, chair back thumb pieces. Marks on lid.



Common in; Town, area, mark

Bern



Neuchatel



Biel



Typical makers, marks

Johann Küpfer, c. 1700, Bern



Jakob Ganting, c. 1710, Bern



Daniel Hemman, c. 1730, Bern



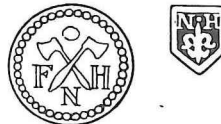
Jean Jacques Chatelain, c. 1730, Neuchatel



Charles Thonnet, c. 1750, Neuchatel



Friedrich Niclaus Hemmet, c. 1780, Biel

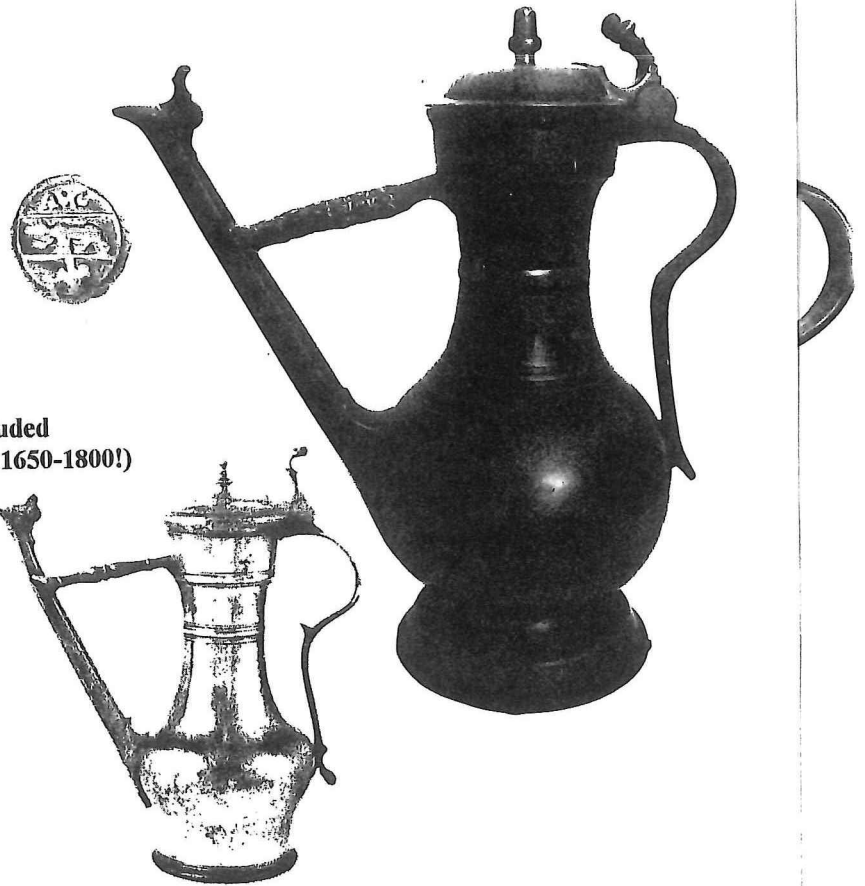


Bern flagons

Type II - Stegkanne

Steg means foot bridge or landing stage.
Made in two sizes only; full measure of 180 cl and half of 90 cl.

Closely related to the Kürbiskanne but the lid is domed with a finial and the thumb pieces are usually better, feather types common. The "steg" often in the shape of a hand holding on to the long spout. Handles are "question mark" type and the Rudolf family of Zofingen included a "slip-hook" on the inside of their handles (from c.1650-1800!)
Marks on lid.



This type also found in Bavaria (Ulm).

Common in; Town, area, mark

Bern



Zofingen



Zürich



Vevey



Typical makers, marks

Abraham Ganting, c. 1750, Bern



Johann Heinrich Petersohn, c. 1770, Bern



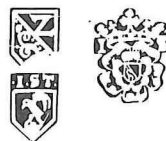
Ludwig Roder, c. 1780, Bern



David Rudolf II, c. 1750, Zofingen



Hans Jakob Steiner, c.1680, Zürich



André Utin, - see above Vevey

Humpen

Cylindrical on a flared foot, single, or more often double dome lid with often pine cone finial. Strap handle with feather or chair back thumb piece. A slight downward taper common (very similar to the squat Richard Pitts spire flagon). Some Zürich examples taper the other way. Often richly engraved and also carry "extra" decorative features. 17th Century types with slightly flared sides and no easy to confuse with the Tirol/Bavarian types of the same period. Marks on lid, handle or underneath.



Common in; Town, area, mark

Zürich



St Gallen



Zofingen

Biel



Bern



Rapperswil



Typical makers, marks

Hans Heinrich Bossard - see above

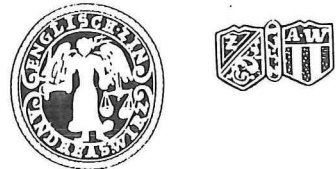
Johann Zimmermann I -see above

Anna Elisabeth Manz -see above

Johannes Weber, c. 1750, Zürich



Andreas Wirz I, c.1750, Zürich



Jakob Glinz, c. 1740, St. Gallen



Johann Friedrich Lang, -see above, Zofingen

David Witz II and III, c. 1720 and 1750, Biel



Jakob Wyss II, c. 1650, Bern



Franz Reimann, c. 1720, Rapperswil

