

## **John Jewsbury & Co and their relevance to "old pewter" collectors.**

"Old John" Jewsbury had started in business in 1884 in the Sandpits area of Birmingham. A typical small firm John Jewsbury & Co made brass doorknobs and cabinet handles like many another small brassware business.

Being able to supply Morris & Newton a prominent furnishing firm led to an increased range of door fittings, cornice poles, stair rods and fittings suitable for the larger hotels.

From Sandpits then to Broad Street central to the brassware trade. Here in a factory with an office, and various processing rooms the business progressed.

Early he recognised that marketing his products in London was essential and first he and then his son "Young John" travelled there securing orders for large quantities of brass cabinet handles.

Old John died in 1903 aged 59 following an accident at a Turkish baths. He left the business shared between his wife and eldest son Samuel. Young John was however the driving force and Samuel was years later bought out.

By 1910 they were producing antique reproductions. Scottish Claymores and targes were an early reproduction success.

The Pewterware was made to look old by being dented when shaken in a barrel. This pewterware was likely passed off as genuine. There were a number of complaints at the time from collectors likely concerning this firm but likely there were others.

In 1911 the firm became John Jewsbury & Co. Ltd and they had a London showroom at 4, Windmill Street, Tottenham Court Road, telephone Museum 4583. Thus in the heart of London this Birmingham Brassware maker also offered Pewterware which as the catalogue shows was finished in such a way as to be like old pewter.

In 1914 the business purchased a factory site in Western Road Birmingham for £6300, a huge amount of money then in 1914 for a factory site. The Great War saw John Jewsbury & co Ltd as serious manufacturers of copper ammunition

boxes, serious repairers of shell containers, and producers of charger clips for small arms, employing numbers of men at different sites.

After the war they failed with alarm clocks but succeeded with faux money boxes resembling leather bound books which they sold around the world, and even nut crackers resembling women's legs sold well in America.

To expand in the mid 1930s they took over the remains , designs and customer base of the failed Pearson & Page Ltd which became Pearson Page , Jewsbury & Co Ltd.

Even then there were still at least two full pages of "old" pewter in their mainly brassware catalogues.

The firm expanded again into larger premises in Witton, successful enough to keep the old premises and site and let it out.

With the war and all brass reserved for military work they succeeded again with the production of frames for gas masks, ammunition boxes, and substantial quantities of brass castings for the Army and Navy.

In the 1950s PPJ used the branding "Peerage" for its successful ranges of reproduction antiques and furnishing accessories.

In the 1960s the firm employed 500 people and offered more than 1000 products. It also floated its shares on the stock exchange but was then a takeover target being swallowed by Ferguson Holdings under whose ownership it did not flourish.

So of the various candidates John Jewsbury & Co Ltd most fits the bill for the firm that the Society of Pewter Collectors was worried about even up to Michaelis's time in the later 1950s.

In fact we can see how worried Ron Michaelis was by the number of letters he wrote to them which is shown in a section following from the catalogues and price lists. Indeed some of the rubbings Michaelis made show some of the marks he recorded, which concerned him.

This article only shows what it has found, there is very little evidence remaining anywhere. Certainly not in Birmingham and product catalogues are

rare. Many of the details given here are a précis taken from 2005 articles in a Birmingham based publication where elderly members of the Jewsbury family related their history to an interested writer.

They made brassware and pewterware and made it look "old". They were substantial manufacturers. They had London showrooms and were well established in London trade.

It is not known what marks they used before the Pearson Page set up. Websites who mention them state that their wares were often unmarked. No marks exist to show how John Jewsbury & Co; or and Co Ltd; marked their wares if indeed they ever did. In those days of business markings used were often those of the retailer or wholesale distributor at their stipulation when ordering.

This matter of marks is significant to the level of deception intended. Englefields had their Crown Rose which we assume they used though we do not know if they used it on the Townsend & Compton production from the original moulds. The NR was likely from Robert Normansell Ltd (and Norseman Ware), though this is not yet proved. However no marks at all and what chance is there of identifying the maker?

S.P.C.

J. J. & Co. Ltd.  
B

**John Jewsbury & Co.**

LIMITED

BRASSFOUNDERS,

SOHO WORKS,

Western Road, Spring Hill,

**BIRMINGHAM.**

:: DESIGNS IN ::

**Antique Brassfoundry**

(PEWTERWARE & GLASS)



Telegrams :  
OLBRAS,  
BIRMINGHAM.

Telephone :  
NORTHERN  
1846.



Also Manufacturers of  
BRASS AND IRON

**Furniture Fittings**

for

ANTIQUE & MODERN  
FURNITURE.

MOTOR MASCOTS.

All kinds of Cast, Stamped, and  
Machine made Brassfoundry.



London  
Showroom :  
4, Windmill Street,  
Tottenham Court Rd.

Telephone :  
Museum 4583.





# ENGLISH PEWTER

$\frac{1}{3}$  FULL SIZE



P8903



P8826



P8638



11119



P8325



11120



11118



P9110



10809



11055



P8336



11056



P8792



P8811



P8791



P8810



P8809



P10795



P8270

# ENGLISH PEWTER

1/6 FULL SIZE



P7583



P6624



P7397



P7408



P6494



III104



P10913



III109



P10751



P9452



10955



P8162



10956



P10834



P8380



P8657



10946



III117



10958



10959



III137



III1097



III138

# ENGLISH PEWTER

1/6 FULL SIZE



11251



11497



11498



10648



11250



11344



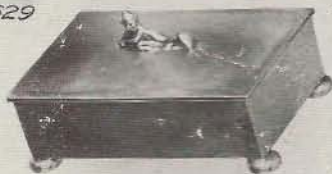
11629



11330



11344



11458



11494



11452



11452



11493



11623



11624



11332



11593



11346



11346



11346



11346



ENGLISH PEWTER  
1/6 FULL SIZE



11555



11373



11495



11331



11625



11500



11626



11263



11289



11627



11290



11628



11163



11551

ENGLISH PEWTER  
1/8 FULL SIZE



11614



11615



11616



11617



11618



11619



11509



11512



11508



11510



11511



11120



11621



11622



11496



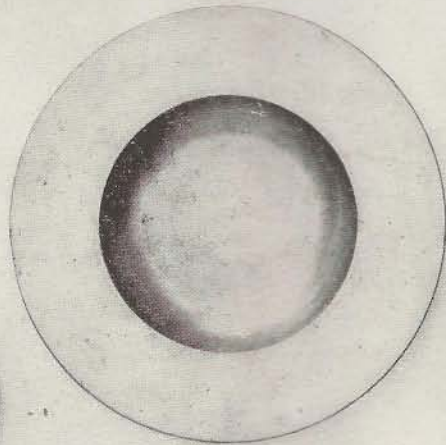
11620



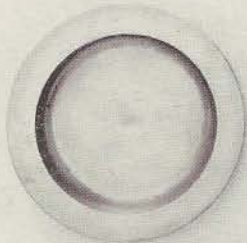
11286



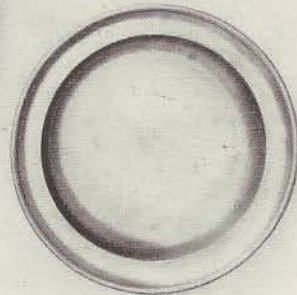
11272



11411



11296



11292

# ENGLISH PEWTER

1/8 FULL SIZE



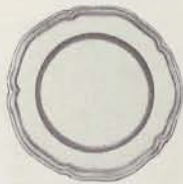
P9024



11129



P9027



10961.7"



P9927



10961.9"



P7776



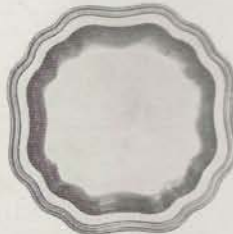
11145



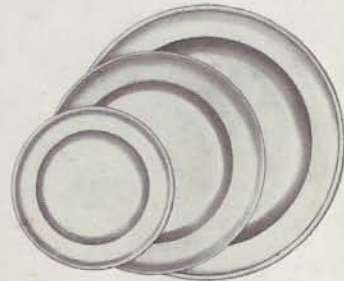
11057



11095  
9 1/4" 6 3/4"



10949.



11096.  
7" 9 3/4" 12"



7 3/8"



5"

11094



4 1/4"



3 1/4"



2 5/8"



10943.



11093



10947.



11147.



11146.



**PRICE LIST FOR**  
**Reproductions of Antique**  
**Pewter Ware**  
**CATALOGUE**



**J. J. & Co.**  
**LTD.**



# Price List.

No.	DESCRIPTION.	Prices.
P 6494	Candlesticks .. .. .	21/- pair
P 6522	Candlestick .. .. .	53/- pair
P 6624	" .. .. .	27/- "
P 9629	Large Pricket Candlestick .. .. .	£15 "
P 7397	Candlestick .. .. .	84/- "
P 7408	" .. .. .	26/- "
P 7583	" .. .. .	28/- "
P 7776	Inkstand .. .. .	50/- each
P 8162	Tea Caddy .. .. .	49/- "
P 8270	Spoon .. .. .	3/- "
P 8325	Quaitch .. .. .	9/- "
P 8336	" .. .. .	9/- "
P 8330	Box .. .. .	30/- "
P 8638	Placque .. .. .	32/- doz.
P 8657	Tea Caddy .. .. .	43/- each
P 8791	Spoon .. .. .	6/- "
P 8792	" .. .. .	3/- "
P 8809	" .. .. .	5/- "
P 8810	" .. .. .	4/- "
P 8811	" .. .. .	4/- "
P 8826	Placque .. .. .	32/- doz.
P 8903	" .. .. .	24/- "
P 9024	Box .. .. .	70/- each
P 9027	" .. .. .	60/- "
P 9110	Quaif .. .. .	6/- "
P 9452	Candlestick .. .. .	48/- pair
P 9927	Casket .. .. .	51/- each
10648	Candlestick .. .. .	33/- pair
P 10751	" .. .. .	42/- "
P 10795	Spoon .. .. .	8/- each
10809	Thimble Full .. .. .	4/6 "
10834	Tea Caddy .. .. .	35/- "
10913	Candlestick .. .. .	60/- pair
10943	Tappit Hen .. .. .	62/- each
10946	Bowl .. .. .	13/- "
10947	Jug .. .. .	54/- "
10949	Plate .. .. .	23/- "
10955	Box .. .. .	21/- "
10956	" .. .. .	24/- "
P 10958	Porringer .. .. .	16/- "
10959	" .. .. .	16/- "
10961	Plate 7" .. .. .	11/- "

No.	DESCRIPTION.	Prices
10961	Plate 9"	17/- each
11055	Box .. .. .	16/- "
11056	" .. .. .	20/- "
11057	" .. .. .	55/- "
11093	Jug .. .. .	72/- "
11094	Jug, with lid 7 $\frac{3}{8}$ " .. .. .	55/- "
"	" " " 5" .. .. .	48/- "
"	" " " 4 $\frac{1}{4}$ " .. .. .	38/- "
"	" " " 3 $\frac{1}{4}$ " .. .. .	32/- "
"	" " " 2 $\frac{5}{8}$ " .. .. .	29/- "
"	" without lid 7 $\frac{3}{8}$ " .. .. .	33/- "
"	" " " 5" .. .. .	27/- "
"	" " " 4 $\frac{1}{4}$ " .. .. .	23/- "
"	" " " 3 $\frac{1}{4}$ " .. .. .	16/- "
"	" " " 2 $\frac{5}{8}$ " .. .. .	14/- "
11095	Plate 6 $\frac{3}{4}$ " .. .. .	8/- "
"	" 9 $\frac{1}{4}$ " .. .. .	16/- "
11096	" 7" .. .. .	9/- "
"	" 9 $\frac{3}{4}$ " .. .. .	17/- "
"	" 12" .. .. .	26/- "
11097	Vase .. .. .	36/- "
11104	Candlestick .. .. .	27/- pair
11109	Chamber Candlestick .. .. .	17/- each
11117	Bowl .. .. .	19/- "
11118	Mustard .. .. .	19/- "
11119	Dredger .. .. .	16/- "
11120	Sugar .. .. .	12/- "
11120	Jug .. .. .	9/- "
11129	Bowl .. .. .	36/- "
11137	Vase .. .. .	27/- "
11138	" .. .. .	27/- "
11145	Plate .. .. .	34/- "
11146	Jug .. .. .	36/- "
11147	Jug .. .. .	36/- "
11163	Jug .. .. .	48/- "
11250	Candlestick .. .. .	25/- pair
11251	" .. .. .	25/- each
11263	Chamber Candlestick .. .. .	25/- "
11272	Inkstand .. .. .	15/- "
11286	" .. .. .	17/- "
11289	Tobacco Jar .. .. .	20/- "
11290	" " .. .. .	19/- "
11292	Plate .. .. .	17/- "
11296	" .. .. .	12/- "
11330	Bowl .. .. .	12/- "
11331	Ashtray .. .. .	4/- "

No.	DESCRIPTION.	Prices.
11332	Bowl .. .. .	20/- each
11344	Tankard 1 Pt. .. .. .	60/- "
11344	" 1 Qt. .. .. .	84/- "
11345	Communion Jug .. .. .	90/- "
11346	Harvesters' Measures Gill .. .. .	22/- "
"	" " $\frac{1}{2}$ Pt. .. .. .	36/- "
"	" " 1 Pt. .. .. .	42/- "
"	" " 1 Qt. .. .. .	70/- "
11376	Inkbox— Plain .. .. .	78/- "
	with crest .. .. .	83/- "
11383	Ashtray .. .. .	3 6 "
11411	Alms Dish .. .. .	40/- "
11435	Serviette Ring .. .. .	4/- "
11452	Box Large .. .. .	44/- "
"	" Cedar lined .. .. .	49/- "
"	" Small .. .. .	33/- "
"	" Cedar lined .. .. .	37/- "
11458	Box .. .. .	50/- "
"	" Cedar lined .. .. .	55/- "
11493	Tappit Hen .. .. .	62/- "
11494	Jug .. .. .	54/- "
11495	Salt .. .. .	8 6 "
11496	Tankard .. .. .	17/- "
11497	Candlestick .. .. .	27/- "
11498	" .. .. .	37/- "
11499	Comport .. .. .	18/- "
11500	Chamber Candlestick .. .. .	12/- "
11508	Snuff Box 9/- with crest .. .. .	without crest .. .. .
11509	" " 9/- " " .. .. .	" " " " .. .. .
11510	" " 9/- " " .. .. .	" " " " .. .. .
11511	" " 9/- " " .. .. .	" " " " .. .. .
11512	" " 9/- " " .. .. .	" " " " .. .. .
11551	Jug .. .. .	26/- "
11552	Dutch Pot .. .. .	48/- "
11555	Quaif .. .. .	8/- "
11614	Sugar Dredger .. .. .	30/- "
11615	Salt Large .. .. .	17/- "
"	" Small .. .. .	10 6 "
11616	Quaif .. .. .	17/- "
11617	Egg Cup .. .. .	5/- "
11618	Salt .. .. .	10 6 "
11619	Sugar Dredger .. .. .	26/- "
11620	Salt .. .. .	27/- "
11621	Communion Cup .. .. .	40/- "
11622	" " .. .. .	24/- "
11623	Quaif .. .. .	31/- "

No.	DESCRIPTION.			Prices.
11624	Quaif, one handle	Large, 28/-	medium, 21/6	small, 16/- each
"	" two handles	" 33/-	" 26/6	" 21/6 "
11625	Ashtray .. .. .			8/6 "
11626	Bowl .. .. .			135/- "
11627	" .. .. .			130/- "
11628	Jug, with lid			60/- "
"	without lid			44/- "
11676	Communion Goblet			55/- "
11686	Jug 1 quartern			11/- "
	1/2 pint			18/- "
	1 pint			33/- "
11690	Jug .. .. .			33/- "
11811	Tankard .. .. .			18/- "
11830	Large Snuff Box			11/- "
11830	Small Snuff Box			9/- "
11831	Soup Spoon .. .. .			3/- "
11832	Inkstand .. .. .			68/- "
11840	Mustard Spoon			1 8 "
11843	Stirrup Cup			76/- "
11855	Caddy Spoon .. .. .			2/6 "
11890	Candlestick .. .. .			18/- "
11901	Bowl .. .. .			14/- "
11930	Bowl .. .. .			18/- "
11937	Tunny Measures	1/2 quartern		13/- "
		1 quartern		17/- "
		1/2 pint		19/- "
		1 pint		23/- "
11944	Pepper .. .. .			16/- "
11945	Salt .. .. .			16/- "
11952	Bowl .. .. .			18/- "
11967	Inkstand .. .. .			33/- "
11968	Large Bowl .. .. .			90/- "
11969	Inkstand .. .. .			42/- "
11970	Inkstand .. .. .			42/- "
11973	Inkbox— Plain			66/- "
	with crest			71/- "
12005	Vase .. .. .			42/- "
12006	Vase .. .. .			54/- "
12007	Vase .. .. .			44/- "
12010	Vase .. .. .			52/- "
12013	Goblet .. .. .			11/- "
12087	Jug .. .. .			20/- "
12091	Inkstand, top diameter 3"			11/2 "
12091	" " " 4"			16/- "



# Reproduction English Pewter



11843  
STIRRUP CUP  
Height 8"



11345  
COMMUNION JUG.  
Height 11"



11676  
COMMUNION GOBLET.  
Height 10"



12010  
VASE.  
Height 9 $\frac{3}{4}$ "



12007  
VASE.  
Height 8 $\frac{3}{4}$ "



12005  
VASE.  
Height 9"



12066  
VASE.  
Height 9"



11499  
COMPORT.  
Height 5 $\frac{1}{4}$ "



11930  
BOWL.  
2" x 5 $\frac{1}{2}$ " Diam.



P 9629  
LARGE PRICKET CANDLESTICK.  
Height 18 $\frac{1}{2}$ "



11952  
BOWL.  
2" x 5 $\frac{1}{4}$ " Diam.



11690  
JUG.  
Height 7 $\frac{1}{4}$ "



11552  
DUTCH POT.  
9" Diam.



11968  
BOWL.  
6" x 9 $\frac{3}{4}$ " Diam.

# Reproduction English Pewter



11967  
INKSTAND.  
Height, 2 $\frac{3}{4}$ "



12091  
INKSTAND.  
Top Diam., 3" and 4"  
2 sizes.



11969  
INKSTAND.  
Height, 4"



11970  
INKSTAND.  
Height, 4"



11973  
INK BOX.  
6 $\frac{1}{4}$ " x 4 $\frac{1}{2}$ " x 1"



11832  
INKSTAND.  
9 $\frac{1}{2}$ " x 5 $\frac{1}{2}$ "



11376  
INK BOX.  
8" x 4 $\frac{1}{2}$ " x 1 $\frac{1}{2}$ "



11944  
PEPPER AND SALT.  
Height, 5"



11945



11435  
SERVIETTE RING.  
1 $\frac{3}{4}$ " Diam.



11855  
CADDY  
SPOON.  
Length 4"



11830  
SNUFF BOX.  
Large .. 3 $\frac{1}{4}$ "  
Small .. 2 $\frac{3}{4}$ "



12013  
GORLET.  
Height 4 $\frac{3}{8}$ "



11840  
MUSTARD SPOON.  
Length 3 $\frac{1}{2}$ "



11831  
SOUP SPOON.  
Length 6 $\frac{1}{2}$ "



11901  
BOWL.  
5 $\frac{1}{4}$ " Diam.



P 6522  
CANDLESTICK.  
Height 8 $\frac{1}{2}$ "



$\frac{1}{2}$  Qtn.



1 Qtn.



$\frac{1}{2}$  Pt.



1 Pt.

SET OF TUNNY MEASURES.  
11937



11890  
CANDLESTICK.  
Height 8"



11686  
JUG.  
1 Qtn.  $\frac{1}{2}$  Pt. 1 Pt.



11811  
TANKARD.  
Height 4 $\frac{1}{2}$ "



12087  
JUG.  
Height 4"



Please return to: -

R. F. MICHAELIS,  
80 DENTON ROAD,  
DENTON, NEWHAVEN,  
SUSSEX.

1956

LEAFLET HP—PAGE ONE



“HOMEMAKER” PEWTER WARE



No. 17535 4½ in.



No. 17526 6 in.

Old English pewter has a fascination all of its own. It always has had and so it will continue. Many collectors are very proud of the pieces they have about the place. They look good; they make the place look good. How they dote upon them; how they love to share the joy of possession with those privileged to behold their collections. It arouses a kind of pardonable envy in the onlooker.



No. 17387 7 in.



No. 17532 8 in.

“Homemaker” Reproduction Pewter is of such excellence as to have created a class all of its own. To see them apart you could not tell these reproductions from the antiques; the old from the not so old. The reason is not far to seek.



No. 19524 6¾ in.



No. 17534 7½ in.

The old moulds from which “Homemaker” pewter is cast just breathe antiquity. These fine reproductions have in themselves the merit of “collector pieces”! Use them to make worthy additions or to start your own collection now! Ask your old friend what he thinks about them. And, when next you see it, should you note an increase in his collection well, you may be justified in thinking “Homemaker.”



No. 19525 9½ in.



Wine Taster  
No. 17735  
4½ in. 4½ in. 5¼ in. 6¼ in. dia.

See the range of “Homemaker” Reproduction Pewter and let envy be gone! See also the name “Homemaker” stamped on every piece.



Wine Taster  
No. 17806 3 in. dia.



No. 19528 6½ in.



Ash Tray  
No. 17812  
2½ in. 3½ in. dia.



Ash Tray  
No. 17813  
4½ in. long



No. 19532  
2 sizes: 1 pint, 1 quart



Tankard  
No. 17221  
5¼ in. high x 3¼ in. dia.



Tankard  
No. 17367  
½ pint 5 in.  
1 pint 5½ in.

“Homemaker” Pewter — fine reproductions of fine old pieces!  
Antique or bright finish to choice. State your preference when ordering.

“HOMEMAKER”

Printed in England

Perpetuates the glory of an Ancient Craft.

*“Homemaker” — the trademarks of Pearson, Page, Jewsbury & Co. Ltd.,  
4 “Peerage” S  
Wheatwood Road, Wilton, Birmingham 60*



“HOMEMAKER” PEWTER WARE



Salt Cellar  
No. 18416  
3in. dia. × 2in. high



Bowl  
No. 17371  
6½in. dia. × 2in. high



Quaich  
No. 17370  
4½in. 4½in. 5½in. 6½in. dia.



Tobacco Jar  
with Humidor  
No. 19529 5½in. high



Stirrup Cup  
No. 19535  
Height 8in.



Tappit Hen  
No. 17368 8in. high  
No. 17224 10in. high



Jug  
No. 17222  
8¾in. high

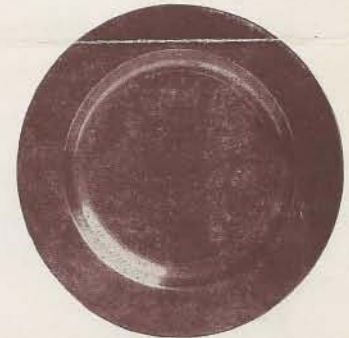
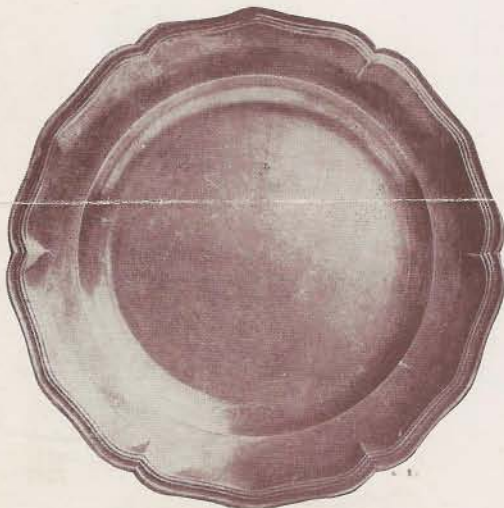
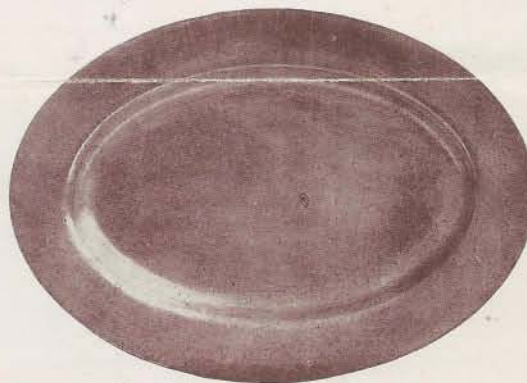


Plate  
No. 17210 A Plain Edge  
No. 17210 B Beaded Edge  
6 8 9 10 12in. dia.



Fancy Edge Plate  
No. 17800  
7½in. 9in. 10½in.



Dish, Oval  
No. 17211  
14in. × 9in. and 18in. × 13½in.



Measures  
No. 19539  
Noggin  
1 Gill ½ Pint  
1 Pint 1 Quart

Inspect the range. Call on your local “Homemaker” Distributor.

“HOMEMAKER”

The pre-eminent reminder of happy days.




## Marks Found on Reproduction Pewter in 1955



These were found on Pewter then being made in Birmingham by Pearson Page and Jewsbury - as for example on -



The following letters tell of questions being asked

  
**The Society of Pewter Collectors**  
 Hon. Treasurer: William E. Lane, 110 Cecil Street, London, E.C. 4.  
 Hon. Secretary: H. C. Chapman, 110 Cecil Street, London, E.C. 4.  
 Hon. Librarian: H. C. Chapman, 110 Cecil Street, London, E.C. 4.

30th July, 1955

Dear Sir,

With reference to the above exhibition, at which your fine collection of reproduction antique pewterware, it was observed that certain old marks were used, these pieces, these marks were, in many instances, identical (or almost identical) to known marks used by 18th century pewterers, and it is thought that, perhaps, your list has some historical connection with the potters who originally used such devices.


In view of the fact that the Society of Pewter Collectors I have named in my business to research all marks used by both old and new potters, and it would be appreciated if you could send me some photographs or drawings of all such marks used on your ware. Such information is recorded for posterity.

This Society is also anxious to collect together literature on pewter, both old and new, and it would be helpful if you could send me copies of any trade catalogues, brochures, or other printed matter, preferably illustrated with photographs of actual examples of antique pewterware made by your goodselves.

Any help you can give in this quest will be very much appreciated.

Yours faithfully,  
 HENRI F. MICHAELS,  
 (Hon. Librarian).

Enclosed. See above carefully.

ESTABLISHED 1883  
**PEARSON PAGE JEWELLERY CO. LTD**  
  
 WESTWOOD WORKS  
 WESTWOOD ROAD  
 WITTON - BIRMINGHAM 6 11th August, 1955.

Dear Sir,

**"HOWMAKER" PEWTER WARE.**

Many thanks for your letter of the 30th July and my apologies for not replying sooner but we have been on holiday the last 2 weeks.


Regarding the marks which we use on the above-mentioned Pewter Ware, as far as we know ourselves there is no historical connection.

Rubbings of the marks used on our Pewter Ware will be sent to you within the next few days.

As requested, illustrations are enclosed of all patterns made in the range supplied by us for your records.

Yours faithfully,  
 PEARSON PAGE JEWELLERY CO. LTD.  
 For R.A. Wolstenholme,  
 Sales Manager.

ENCL: Illustrations.

ESTABLISHED 1883  
**PEARSON PAGE JEWELLERY CO. LTD**  
  
 WESTWOOD WORKS  
 WESTWOOD ROAD  
 WITTON - BIRMINGHAM 6 16th August, 1955.

Dear Sir,

**"HOWMAKER" PEWTER WARE.**

Further to our letter of the 11th August in reply to yours of the 30th July regarding marks used on the Pewter Ware sold by us.

As promised, please find enclosed rubbings of marks used on our pewter ware.

Yours faithfully,  
 PEARSON PAGE JEWELLERY CO. LTD.  
 For R.A. Wolstenholme,  
 Sales Manager.

30th August, 1955

Dear Sir,

**"HOWMAKER" PEWTER WARE.**

I thank you for your letter of 11th August, and for the enclosed illustrations of pewterware made by your firm.

Your subsequent letter of the 16th. Instant is also to hand, and is gratefully received. It is desired to order good quality marks for the files of the library of the Society of Pewter Collectors, but I regret to say that, in some instances, the designs are not clear enough for this purpose.

As I am sure that you are a fairly high priced value for the money, and I am quite willing to pay the cost of the marks.

There are a few of your earlier productions, and I am sure that you are aware of those given by you, have been used in the past, and it would appear that you have, in the past, used a larger range of marks than at present.

Do you have any record of these earlier marks ?

You will appreciate that I am anxious to record details of all marks used, so that our library can maintain an accurate record of all pewterware as possible, with its maker, and date. I have found it far easier to obtain this information whilst a firm is still in existence, than to try to 'dig-up' the facts from less reliable sources at a later date.

Thanking you again for your kind co-operation in this matter,

I am,  
Yours faithfully,  
Hon. Librarian,  
Society of Pewter Collectors.

ESTABLISHED 1888  
**PEARSON-PAGE-JEWSBURY CO. LTD**  
Reproduction & Forwarding Division  
Electrical Appliances  
Perpetual Calendar  
Home Savers and many other articles etc.  
PHONE EAST 1482-4

MESSAGE AT ITS BEST  
WESTWOOD WORKS  
WESTWOOD ROAD  
WITTON · BIRMINGHAM 6

23rd August 1955

MR/MO  
Mr. Ronald F. Michaelis,  
45 Park Hall Road,  
West Dulwich,  
LONDON, S.E.21.

Dear Sir,  
Thank you for your letter August 20 on the subject of "Homemaker" Pewter Ware - London Marks.

In view of your request the matter is being investigated further to ascertain whether we can in fact get you actual cast impressions of the marks occurring on the patterns. It is noted you would be quite happy to defray the cost.

The explanation of other marks than those on the exhibits at the recent "Foster of Today" Exhibition may be explained in that this Company did acquire old dies or casting patterns some years ago. But the attempt will be made to do as you ask and immediately our Technical people have examined the situation you will hear from us again.

The aim you have in view is certainly of interest and you can rest assured of any co-operation you can extend.

Yours faithfully,  
PEARSON PAGE JEWSBURY CO. LTD.  
R.A. Wolstenholme  
Sales Manager.

Messrs. Pearson-Page-Jewsbury Co., Ltd.,  
Westwood Works,  
Westwood Road,  
Witton, Birmingham, 6.  
For the attention of Mr. R.A. Wolstenholme

19th. May, 1956

Dear Sirs,  
"HOMEMAHER" PEWTERWARE

During August last we had correspondence on the subject of the marks used by your firm upon specimens of your "Homemaker" series of reproduction antique pewterware, and you kindly sent me rubbings of a few of the marks at present in use (vide your letter of 16th. August, 1955).

I asked whether it might have been possible for me to have clearer impressions of these marks, so that good drawings could be made for record purposes, and you kindly offered your full co-operation, but I fear the correspondence lapsed at that stage. It was suggested that you might be able to let me have actual impressions struck upon thin metal tablets, and if you can see your way clear to accede to this request it would serve my purpose admirably.

I have before me several well made examples of pewterware which is, undoubtedly, of your "Homemaker" series, but which bears marks other than those of which rubbings were sent, and I am desirous of being able to catalogue these specifically as productions of your factory.

It would be appreciated, therefore, if you could let me have details of all marks used, both on previous productions, and on present ware.

Yours faithfully,  
Ronald F. Michaelis

ESTABLISHED 1888  
**PEARSON-PAGE-JEWSBURY CO. LTD**  
Reproduction & Forwarding Division  
Electrical Appliances  
Perpetual Calendar  
Home Savers and many other articles etc.  
PHONE EAST 1482-4

MESSAGE AT ITS BEST  
WESTWOOD WORKS  
WESTWOOD ROAD  
WITTON · BIRMINGHAM 6

30th May, 1956.

MR/MO/MR.  
R.F. Michaelis, Esq.,  
45, Park Hall, Road,  
West Dulwich,  
London S.E.21.

Dear Sir,  
Your letter of the 19th May in furtherance of the correspondence between us last year is acknowledged with thanks, and we would apologise for the delay in replying "Homemaker" Pewterware marks.

Your reference to correspondence lapsing during August last year is quite correct, and we seem to be very much to blame in this connection, and we do offer you our sincere apologies.

You will be pleased to hear, however, that we are now proceeding to prepare Pewter tablets with impressions of our marks; these will be forwarded to you with the least possible further delay. You did offer to defray the cost of these tablets, and you will be advised of this in due course.

Your reference to other marks from those of which rubbings have been sent to you have been noted, and we are now looking into the matter again, with a view to being able to give you some definite information one way or the other in our next communication.

In the meantime, with renewed thanks for your letter and interest,

Yours faithfully,  
PEARSON PAGE JEWSBURY CO. LTD.,  
R.A. Wolstenholme  
Sales Manager.



ESTABLISHED 1883  
**PEARSON-PAGE-JEWELRY CO-LTD**

**Beerage**

REPRODUCTION & FURNISHING BRASSWARE  
ELECTRICAL FITTINGS  
PERIOD FURNITURE  
FITTINGS  
HOME SAFES FOR BANKS  
BUILDING SOCIETIES ETC  
PHONE EAST 1482-4

BRASSWARE AT ITS BEST  
WESTWOOD WORKS  
WESTWOOD ROAD  
WITTON · BIRMINGHAM · 6

13th June, 1956.

Dear Sir,

With further reference to your recent correspondence regarding the Pewter Tablets with impressions of our marks - "Homemaker" Pewterware.

Mr. Saunders, who is dealing with this matter is at the moment away on business and the writer has investigated for him.

The preparation of these tablets would be much easier if you could kindly return to us the sample rubbings submitted to you in August last year. If you would kindly let us have these back by return of post the matter will have our careful and prompt attention.

Looking forward to your reply,

we remain,

Yours faithfully,  
PEARSON PAGE JEWELRY CO. LTD.,  
*S. Kibbler*  
S. Kibbler,  
Sales Order Department.

7th. July, 1956

Dear Sir,

I regret the delay in replying to your letter of the 13th. June last, but I have been away on holiday, and have had no opportunity of dealing with it ere this.

You asked for the return of the rubbings of the few marks already sent to me, but I regret that I cannot return these as they are affixed to the pages of my record book, and being on tissue paper only, are difficult to extract without irreparable damage.

The rubbings are very poor, and do not show enough of the marks to enable me to make good drawings suitable for inclusion in my eventual publication on marks and makers, and it was for this reason that I asked that you would be good enough to let us have these re-struck on thin metal sheets, as they would appear on the pewter articles themselves.

I trust that you will be able to let me have these tablets as arranged, at your early convenience.

I remain,  
yours faithfully,  
*R. J. Michaelis*

ESTABLISHED 1883  
**PEARSON-PAGE-JEWELRY CO-LTD**

**Beerage**

REPRODUCTION & FURNISHING BRASSWARE  
ELECTRICAL FITTINGS  
PERIOD FURNITURE  
FITTINGS  
HOME SAFES FOR BANKS  
BUILDING SOCIETIES ETC  
PHONE EAST 1482-4

BRASSWARE AT ITS BEST  
WESTWOOD WORKS  
WESTWOOD ROAD  
WITTON · BIRMINGHAM · 6

10th July, 1956.

Dear Sir,

This is to acknowledge and thank you for your letter of the 7th July with further reference to the Pewter tablets with impressions of our marks - Homemaker Pewter-Ware.

Your comments that you are unable to return the rubbings are noted and you are assured that we will proceed and let you have the markings on metal at the earliest opportunity.

Yours faithfully,  
PEARSON PAGE JEWELRY CO. LTD.,  
*S. Kibbler*  
S. Kibbler,  
Sales Order Department.