



CHURCHER COLL²

Staple Inn fossils

Old Fowler plate formerly in
use at Staple Inn, Holborn

30057

copied from

sl. 3 1/2" x 2 1/4"

Black flush at bottom

Saty

Annex to "Fowler"
index

2 1/4"

3 1/2



Examples of
OLD PEWTER PLATE
including a portion of the service formerly in use at
the Hall of St. Stephen's

CHURCHER COLL^N

EXHIBITION 1903 at STAPLE INN HALL

Pewter at Staple Inn Hall



CHURCHER COLL²

Staple Iron + other Jewels

used for Exhilaration at

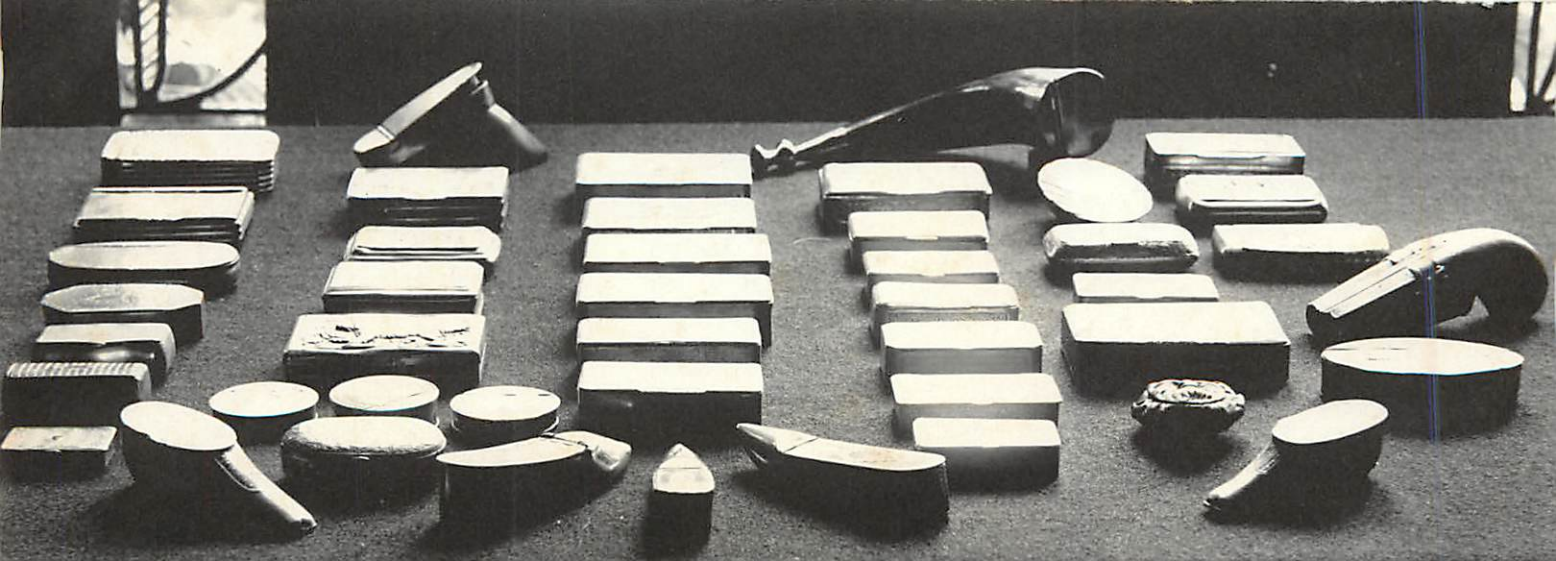
Staple Iron



CHURCHER CALL 2

Large deal is by Ratan Choudhary









26" charger with shallow nesting area 1880

25 1/2" Changer with shallow
reading - Rim 3 3/4" wide

Line 1680





Temp Geo I.



Jacobean candlestick

7 ⁵/₈" high

5 ¹/₂" base



marked on nozzle







10
Museum 2003

2003 2003