

B I B

3236

The Frank Holt Pewter Collection
and Various Properties



FOUNDED 1796

Tuesday 20th October 1998 at 1 pm
New House, 150 Christleton Road, Chester

Veiling
dokter Jan der Linden
Belgie





Lots 115 and 116

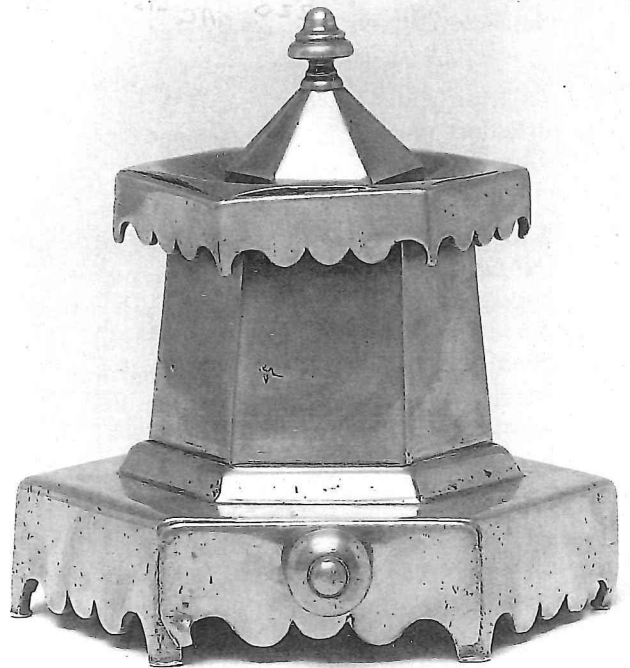
115 A SCOTTISH LIDDED TAPPIT HEN CIRCA 1800 of Scottish pint capacity, height 27.5cm
See illustration 350 £300-500

116 AN EARLY 19TH CENTURY FRENCH LIDDED MEASURE of baluster form with palmette shell thumbpiece and solid handle raised on a foot, height 29cm
See illustration 220 £300-500

117 A SPOUTED FLAGON CIRCA 1830, the domed lid above a reeded slender drum with flared base, swan neck handle with shield terminal, height 33cm
130 £80-100

118 A COMMUNION CUP the bowl with floral engraved frieze and associated knopped stem and domed foot, height 18.5cm
20 £30-50

119 AN EARLY 18TH CENTURY SINGLE REEDED PLATE, London mark and indistinct touch to rear diameter 15in, 38cm, a large hexagonal inkstand with single drawer, a French litre measure, a lead tobacco box and cover and miscellaneous small items(8)
See illustration 220 £200-300



Lot 119 (part)

120 A PAIR OF 18TH CENTURY PLAIN RIM CHARGERS, the rim with ownership initials 'A.L.' diameter, 16 1/2 in., 42cm
70 £100-150



Lot 124

121 A LATE 17TH CENTURY TRIPLE REEDED CHARGER, with ownership triad $\frac{B}{WM}$ and hallmarks to rim, together with six 19th century straight sided reeded mugs, a twin handled example, a pair of candlesticks and a mid 19th century Irish measure (11) 110 £100-200
Cott

122 A 17TH CENTURY TRIPLE REEDED DISH CIRCA 1680 ownership triads $\frac{B}{RE}$ and $\frac{I}{IS}$ together with hallmark's to rim, indistinct touchmark to reverse, diameter 18in., 46cm 580 £300-400
662

123 A GROUP OF SIX 19TH CENTURY STRAIGHT SIDED REEDED MUGS, four tulip mugs, and eighteen bulbous measures varying in size from quart to quarter gill (28) S. Cornelius 150 £100-150

124 A LATE 18TH CENTURY LARGE ALE OR RUM JUG, the bulbous body with single fillet, the spout with grating, with overlap handle, various verification marks to rim, height 26cm *See illustration* 750 phone £400-600

125 AN EARLY 19TH CENTURY FRENCH LIDDED FLAGON, of baluster form with shell thumbpiece and scroll handle raised on foot, touch of Meunier Martin to base, 23cm, together with a straight sided quart mug inscribed 'The Foundation' to body (2) 200
Cott £120-180

126 A SINGLE REEDED PLATE CIRCA 1780 touch of Townsend & Giffin, London, (Cott 480), diameter 9 $\frac{3}{8}$ in., 24cm together with another single reeded plate circa 1730, touch of Joseph Pratt, London (Cott 3763) diameter 9 $\frac{3}{8}$ in., 24cm(2) Joc 130 £100-150



Lots 146 and 147

- 146 A DOME LIDDED TANKARD CIRCA 1710
the body with low fillet and high domed lid
with ramshorn thumbpiece, hollow handle and
decorated hinge, height 18cm
** Similar to lot 70 *W/D* *CR*
See illustration £1250-1500
- 147 A 17TH CENTURY FLAGON
of befeater type, hammered drum, new lid
and thumbpiece, S-shape handle with shield
terminal, touchmark of John Emes, London
(Cott. 1567) to handle, height 27cm.
See illustration *520* £600-800
- 148 AN 18TH CENTURY ^{Swiss} FLAGON
the filleted pear-shaped body upon flared foot
and flat heart-shaped lid with twin acorn
thumbpiece, touchmarks to base, height 29cm
See illustration *440* £200-300
- 149 A LATE 18TH CENTURY SCOTTISH SPOUTED FLAGON,
the flat cover with twin-lobed thumbpiece
above a body of flared form with moulded
girdle to waist, touchmark inside base, height
28cm
See illustration *70* *RB* £200-250
- 150 A SPOUTED FLAGON CIRCA 1835
with knopped double domed lid and open
chair-back thumbpiece above a reeded slender
drum with flared base, double curved handle,
engraved 'Church of Christ Zion Chapel Deal
1837', height 34cm *STANTON*
See illustration *580 34* £150-200
- 151 AN 18TH CENTURY GERMAN EWER AND BASIN
the shallow bowl with relief cast gadrooned
well within a similar decorated rim, the bulbous
flared footed ewer with scroll handle and
conforming decoration, bowl diameter 32cm,
ewer height 19cm
** A similar ewer and basin by Klingling of
Frankfurt is illustrated in 'Pewter of the
Western World', P.Hornsby, fig.798
See illustration *420* *W/D* £600-800
- 152 A LATE 18TH/EARLY 19TH CENTURY FLEMISH COFFEE
POT
the body of pear-shape with knopped domed
lid and wooden handle, height 20cm *60* *W/D* £80-120
- 153 A 19TH CENTURY FLEMISH COFFEE POT
the pear-shaped body with knopped domed lid,
height 20cm *50* *W/D* £80-100



Lots 148, 149 and 150

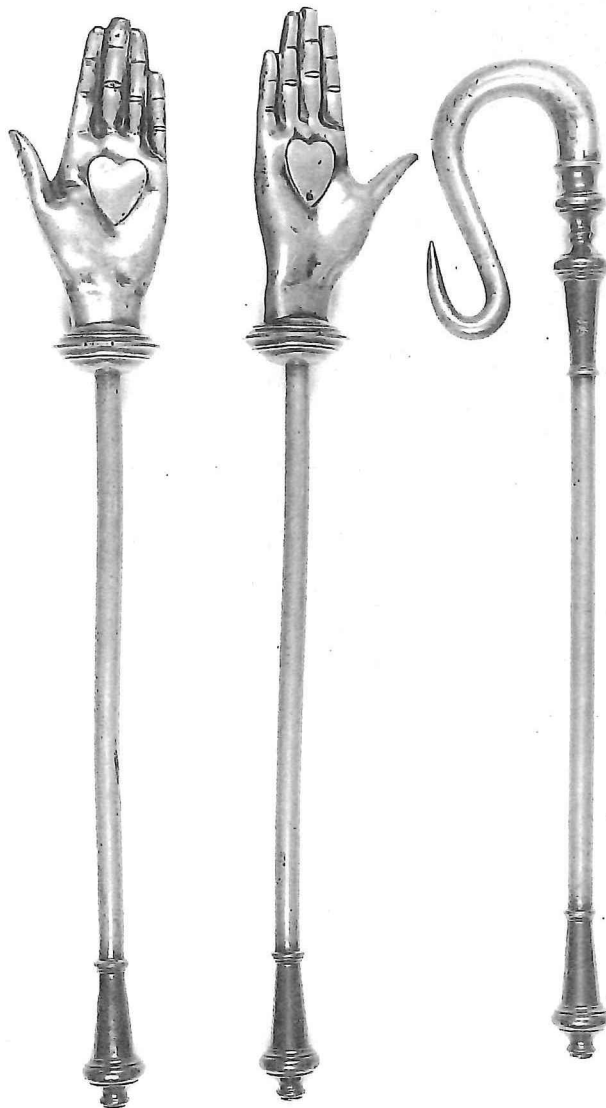


Lot 151



Lots 154, 155 and 156

- 154 A MID 18TH CENTURY TOBACCO BOX
 of casket Rococo form, the oval body with vertical fluting upon
 rocaille feet, lead press to inside, hallmarks to base, probably Flemish,
 height 18cm
See illustration 250 B.C. £200-400
- 155 AN 18TH CENTURY GERMAN SPOUTED GUILD FLAGON
 of Rococo style, the lid with lamb knob above an elongated pear-
 shaped body upon a pedestal foot, with vertical fluting and foliate
 swirled handle, touch to inside of lid, height 37cm
See illustration W102 425 £600-800
- 156 AN EARLY 19TH CENTURY TOBACCO BOX
 of Rococo style, the circular body with canted vertical fluting, upon
 flowerhead formed feet, ownership initials 'M.S.' and touchmarks to
 base, height 17cm
See illustration JG 200 £150-200
- 157 AN 18TH CENTURY FLEMISH CIBORIUM
 the reeded domed lid surmounted by a cross, the plain cup-shaped
 bowl raised upon a ball knopped stem, with domed foot, height
 31cm
J O' C 280 £150-200
- 158 AN 18TH CENTURY FLEMISH CHALICE
 the plain bowl upon reeded knopped stem and flared foot engraved
 'PROGHIE DVDZEELE', height 17.5cm
140 £120-180



Lot 159

159 A GROUP OF THREE 18TH CENTURY PROCESSIONAL
MACES
two with an open hand with heart to palm, the
other of crook form, length 75cm (3)
See illustration 'plate 680' £400-600

160 A 19TH CENTURY SPOUTED QUART MUG
together with a tulip mug with double curved
handle, a concave sided mug and a half litre
continental tankard of cylindrical form(4) £60-80

161 A SINGLE REEDED PLATE CIRCA 1725
touchmark of A. Reavely (Cott. 3868) to rear,
diameter 15in., 38cm 180 £180-220

162 AN 18TH CENTURY SINGLE REEDED PLATE
crowned initials 'M.H.' to rim, indistinct
hallmarks and London label to rear, diameter
15in., 38cm 140 662 £150-220

163 AN 18TH CENTURY SINGLE CONTINENTAL REEDED
DISH
with deep gentle booge and incised ring
around boss, wrigglework to rim with various
initials and date 1751, diameter 14½in., 37cm
260 £300-400

164 A LATE 17TH CENTURY TRIPLE REEDED DISH
the rim with engraved armorial, initials and
date '699, hallmarks to rim, diameter 16½in.,
42cm 500 £500-800



Lot 165

165 A CONTINENTAL FIGURE OF CHRIST CHILD
standing on a black marble base, height 49cm
See illustration 1500 n/s £1600-1800
C. m. m.

166 A CONTINENTAL FOOTED PLATE CIRCA 1690-1720
the narrow single reeded rim and faint incised
line decoration to well, upon three stub feet,
touchmarks to rear, diameter 11in., 28cm

90 £120-140
w/d

168 A LATE 18TH CENTURY SINGLE REEDED CHARGER,
ownership triad ^wNA to rim and incised line to
well, together with another similar, diameter
16½in., 42cm (2) 250 £200-300

167 A SWISS FLAGON CIRCA 1800,
the bulbous body with flat heart shaped lid and
twin lobed thumbpiece, simple curve handle,
touchmark to lid, height 16.5cm 150 £200-250
w/d

169 A PAIR OF 19TH CENTURY PLAIN RIM PLATES,
touchmarks and ownership initials FWZ to rear,
together with a single reeded pair and four
others, diameter 9¾in., 23.5cm (8) 90 £120-180
w/d

#	Wahr Philippa	Opbrengst	eigen schatting	in den Houtskan
2,3	159 Three maces	£ 680	21stg 960	400-600
4	157 Cibory, loose lid with cross	280	280	150-200
5	150 Communion flagon,	580	300	180-220
6	149 Scottish flagon	600	200	200-250
7	153 Flemish teapot	?	80	80-100
8	148 French flagon	440	280	200-300
9	147 Swiss flagon	520 ?	760	600-800
10	Measure quart		100	} ONE LOT 60-80
11	Measure pint	60	60	
12	Measure half pint		40	
13	Measure half liter		40	
14	154 Tobacco box (4 marks), loose lid, lead inside	200	400	200-400
15	156 Tobacco box, loose lid	200	300	150-200
16	161 English dish	180	120	180-220
17	162 English dish	140	120	150-200
18	158 122 Dish (4 marks; rim hammered)	580 ⁹⁾	200	300-400
19	152 117 Flemish Marabout flagon	130	80	80-100
20	158 Chalice	140	160	120-160
21	164 Broad rimmed dish	500	960	500-800
Mark: Lorents Hantz, Birgen 1563 (Hantz 7. 1224)				
old	22 165 Jesus child, on marble base (new advise 1000-1200)		2.800	
sold	23, 24 151 Frankfurt ewer and dish (new advise 350-500)		960	400-500

1) toch onder: 163 £ 260 (man niet op opbrengstlijst)?

The Frank Holt Pewter Collection and Various Properties

1 pm Tuesday 20th October 1998
New House, 150 Christleton Road, Chester CH3 5TD



FOUNDED 1796

Sale No: C1613

naafoersept is van Dokter Van der Linden, Erondegen (lid VI)

LOT	RESULT						
1	60.00	49	450.00	97	400.00	✓ 157	280.00
2	80.00	50	520.00	98	220.00	158	140.00
3	30.00	51	6200.00	100	90.00	✓ 159	680.00
4	55.00	52	360.00	101	170.00	160	60.00
5	170.00	53	480.00	102	320.00	161	180.00
6	190.00	54	540.00	103	60.00	162	140.00
7	110.00	55	6800.00	107	220.00	164	500.00
8	90.00	56	1500.00	108	90.00	168	250.00
9	50.00	57	2600.00	109	1300.00	170	150.00
10	35.00	60	70.00	110	200.00	171	110.00
11	25.00	61	400.00	111	360.00	172	110.00
12	110.00	62	600.00	113	60.00	173	40.00
13	40.00	63	600.00	114	110.00	174	70.00
16	40.00	64	2500.00	115	300.00	175	80.00
17	90.00	65	1500.00	117	130.00	178	150.00
18	220.00	66	1900.00	118	20.00	179	260.00
19	170.00	67	3000.00	119	240.00	180	50.00
21	85.00	68	950.00	121	110.00		
22	85.00	69	580.00	122	580.00		
23	320.00	70	800.00	123	150.00		
24	85.00	71	1900.00	124	750.00		
25	180.00	72	460.00	125	200.00		
26	800.00	73	240.00	126	130.00		
27	580.00	74	820.00	127	650.00		
28	680.00	75	290.00	129	300.00		
29	550.00	76	420.00	130	280.00		
30	80.00	77	650.00	131	130.00		
31	130.00	78	6000.00	132	140.00		
32	380.00	79	50.00	133	180.00		
33	3600.00	80	100.00	134	280.00		
34	1000.00	81	460.00	135	280.00		
35	2900.00	82	480.00	136	220.00		
36	2100.00	83	380.00	137	620.00		
37	1000.00	84	260.00	139	340.00		
38	620.00	85	500.00	140	180.00		
39	680.00	86	500.00	141	750.00		
40	950.00	87	440.00	142	1000.00		
41	2500.00	88	1800.00	143	220.00		
42	4500.00	89	820.00	144	90.00		
43	850.00	90	850.00	145	30.00		
44	140.00	91	620.00	✓ 148	440.00		
45	220.00	93	560.00	✓ 149	600.00		
46	620.00	94	480.00	✓ 150	580.00	151	unsold
47	1250.00	95	1200.00	154	200.00		
48	500.00	96	180.00	156	200.00		



FOUNDED 1796

New House, 150 Christleton Road, Chester CH3 5TD. Tel: (01244) 313936 Fax: (01244) 340028
 Eaton Place, 114 Washway Road, Sale, Manchester M33 7RF. Tel: (0161) 962 9237 Fax: (0161) 905 1398
 33 Botanic Road, Churchtown, Southport PR9 7NE. Tel: (01704) 507875 Fax: (01704) 507877

DCH/JD

7 September 1998

Mr. Henk B. Van Wyk
 Gebroken Meeldyk 1
 2988 La Ridderkeek
 The Netherlands

Dear Mr. Van Wyk,

I have shown the pieces received in Edinburgh to our independent pewter expert. His opinions are listed next to your friend's suggested prices.

As you will see on the whole the figures we have provided are lower than your friend's. The prices listed are pre-sale guide estimates at which hopefully we would achieve a successful sale. I will need to know if these estimates are acceptable to your friend.

I have shown item 22 from your list to various colleagues and no one has seen anything similar sell at auction. The general feeling, however, is that the guide price of £2,800 is far too high. Do you know of any similar pieces selling at auction?

I look forward to receiving your instructions.

Yours sincerely,
 PHILLIPS NORTH WEST

A large, stylized handwritten signature in black ink, appearing to read "David C. Houlston".

*Chester office
 01244 - 313936
 Rachel Doerr
 fax 340028*

David C. Houlston
 Pewter Department



INVESTOR IN PEOPLE