

CDO

FINE FURNITURE, METALWORK, PEWTER, CLOCKS,
SCULPTURE, COLLECTABLES, WORKS OF ART, ARMS AND ARMOUR
AND RUGS AND CARPETS

including the property of the late Mrs. M. I. Barham-Swellengebél, Geneva
the Van Haersma de With foundation, Arnhem
the late Mr. J. Korthals Altes, Laren (NH)
Mrs. M. Penkala, Amsterdam

Sale:

WEDNESDAY 21 DECEMBER 1988 at 10.30 a.m. precisely (lot 1-185)

WEDNESDAY 21 DECEMBER 1988 at 2.00 p.m. precisely (lot 186-422)

THURSDAY 22 DECEMBER 1988 at 10.30 a.m. precisely (lot 423-665)

On view:

16, 19, 20 December 1988 from 10.00 a.m. until 4.00 p.m.
and Sunday 18 December 1988 from 10.00 a.m. until 4.00 p.m.

Price: f 25,—

In sending commissions or making enquiries this sale should be referred to as
'MANOLITO'

Enquiries: **Roel Boven**

CHRISTIE'S AMSTERDAM B.V.

Cornelis Schuytstraat 57, 1071 JG Amsterdam

Telephone: (020) 6 64 20 11. Telex: 15758. Fax nr. 6 64 08 99. Cable: Christiart Amsterdam. K.v.K. nr. 137893

Front cover: lot 665

WORKS OF ART
PEWTER AND METALWORK
(Lots 242–375)

237

A BISQUE-HEADED DOLL, the head marked on the back *K. & R., Simon & Halbig 117 n.*, with blue glass sleeping eyes, open mouth with teeth, pale brown wig, composition body jointed at the shoulders, elbows, wrists, hips and knees, dressed in a contemporary sailor suit, socks and shoes, marked under the left foot (some additional cloths); and a small all bisque doll, with blue glass sleeping eyes, finely shaped face, the back of the head marked *11/2*, blond mohair wig, the legs with painted black lace-up boots and white socks, dressed in a knitted silk suit

(2)

f 1.500–2.200

238

A BISQUE-HEADED BOY'S DOLL, marked on the back *KNR Simon & Halbig Germany 126*, with chubby character face, blue glass sleeping eyes, open mouth, short brown wig, composition body jointed at shoulders, elbows, hips and knees, dressed in a contemporary beige linen suit with red trimming and matching hat, socks and shoes (some additional cloths); and a bisque-headed baby doll, the head marked on the back *Simon & Halbig 126 Germany*, blue glass sleeping eyes, open mouth, composition body jointed at the shoulders, elbows and hips, dressed in contemporary baby dress with matching hat (with a large quantity of additional cloths)

35 and 43 cm high

(2)

f 1.800–2.200

239

A BISQUE-HEADED GIRL DOLL, the back of the head marked *KNR Simon & Halbig n.115/26*, brown glass sleeping eyes, closed mouth, dark blond wig, fixed ears, the composition body jointed at shoulders, elbows, wrists, hips and knees, dressed in a contemporary pale blue wool dress and kepi head, silk socks and leather shoes (one thumb missing, one crack in forehead, with some additional cloths)

30 cm high

f 1.500–3.000

240

A WEDGEWOOD CREAMWARE CHILD'S SERVICE comprising twelve plates, eight small plates, eleven soup plates, four serving dishes, a sauce boat, a fruit bowl with plate, a soup tureen, a large square bowl, two serving bowls with cover, a serving dish with openwork rim, a strainer and two wicker baskets, one containing two knives and four forks, each with bone handle, late 19th Century

(42)

f 600–800

241

EIGHT MINIATURE GLASS OBJECTS, comprising two ribbed wine bottles, a glass plate and five various glasses, early 19th Century

(8)

f 400–600

242

AN OAK RING-HANDLED HERRING BARREL with oval hinged top and slatted banded body, applied with a metal medallion with a herring, 19th Century

31 cm high

f 600–800

243

TWO POLYCHROME WOOD AND WROUGHT-IRON BANDED WAINSCOTTS, one carved with initials 'GIK' and 'GDO', and dated 1899, the other with a bird surmounted by scrolling foliage, 19th Century

110 and 115 cm wide

(2)

f 800–1.200

244

A COPPER COFFEE-URN with cylindrical body and openwork base; two copper braziers; a copper kettle; a brass kettle; two brass and copper extinguishers with porcelain mounts; a brass flower pot; a mahogany and brass pipe rack; and a tobacco-box engraved with scenes from the Passion of Christ, 19th Century

(10)

f 1.200–1.600

245

SIX VARIOUS DUTCH PEWTER MEASURES, ranging from a half decilitre to a double liter, with assay marks from the late 19th Century onwards

(6)

f 3.500–4.000

246

A GOTHIC WROUGHT-IRON CHEST, the arched rectangular lid and sides decorated with openwork diaper motives on a red velvet ground, shaped lockplate and side ring handles

28 x 18 cm

f 3.000–4.000

247

A WOOD MODEL OF A DUTCH 'BOEIER', complete with mast and sails and various deck details including an anchor, a ship's boat and three brass cannons, on a wood stand

58 cm high

f 1.800–2.200

248

A PAIR OF MYTHOLOGICAL REVERSE GLASS PAINTINGS with Venus and Cupid, 25 x 31 cm; a reverse glass painting with a landscape with people amongst classical ruins, 20.5 x 27.5 cm; and a reverse glass painting with the martyrdom of a saint, 18th-19th Century 28.5 x 34 cm

(4)

f 600–800

- 284*
AN ENGLISH MAHOGANY-VENEERED AND BANDED MINIATURE CHEST OF DRAWERS with rectangular serpentine top above two short and two long graduated drawers, on shaped feet, 19th Century
20 cm wide
f 1.000-1.500
- 285*
AN ENGLISH MINIATURE MAHOGANY-VENEERED CHEST OF DRAWERS with rectangular bowed top above four graduated drawers and shaped apron, 19th Century
27 cm wide
f 1.000-1.500
- 286
A GERMAN IVORY BEAKER AND COVER, the tapering body carved in high relief with a man amongst wild horses in a naturalistic landscape on a spreading foot with foliage, the domed cover with another man taming down a horse, silver gilt liner, 19th Century
36 cm high
According to the present owner, this beaker was offered to her father by Colonel Sigmund von Elsemaner, 'vleugeladjudant' to the Emperor
f 2.500-3.500
- 287
A NAUTILUS SHELL carved with a fish and cupids playing amongst clouds
f 500-700
- 288
FOUR VARIOUS IVORY PORTRAIT MEDALLIONS of *Caesar*, *Demetrios*, *Rheingraf Otto Ludwig* and *v.Haizfeld*, 5 to 6 cm diam; and fourteen wood draught pieces engraved with various scenes
6 cm diam (18)
f 400-600
- 289
A PAPIER-MACHÉ BALCK-LACQUERED CIRCULAR BOX, the cover painted with a portrait of Raphael, probably *Stobwasser*, 19th Century
8.5 cm diam
f 400-500
- 290
A PAPIER-MACHÉ CIRCULAR BOX, the top painted with a view of Heidelberg, 19th Century
9 cm diam
f 400-600
- 291
A SMALL MINIATURE ON paper depicting a lady wearing an early 19th Century dress, in oval gilt frame; a circular miniature with a romantic portrait of a lady in Renaissance dress, in square ebonised frame; a 'Gouda' pipe with text: 'Tweede Prijs bij het pijpgoeien in het hospitaal, 28-9-1904', signed by the various contestants; and a small watch, set in enamel plaque decorated with a *Scène galante* (4)
f 200-400
- 292
A SEPIA ROMANTIC PORTRAIT MINIATURE of a little girl, marked and dated on the back *M. van Niel 1794.C. Lindner fecit Overschie*, in gilt matel frame; three hair work miniatures in gilt metal frame; and three others (7)
f 600-800
- 293
A CIRCULAR PORTRAIT MINIATURE OF A GENTLEMAN, wearing a white tie, on ivory, signed and dated *C. de Vos f.1802*
6 cm diam
f 400-600
- 294
A PORTRAIT MINIATURE of a lady wearing a lace cap, on ivory, in square ebonised wood frame; a silhouette portrait of a gentleman, in square giltwood frame; another of a gentleman in 18th Century dress, in oval-shaped gilt frame; and three silhouette portraits of ladies wearing lace house caps, in oval gilt frames, early 19th Century (6)
f 600-1.000
- 295
AN OVAL PORTRAIT MINIATURE of a gentleman wearing spectacles, on ivory, signed and dated *C. Kimmel 1834*, in a rectangular frame, 15 x 13.5 cm; and three various silhouette portraits of gentlemen, in rectangular wood frames (4)
f 200-400
- 296
A BRONZE PRESSE-PAPIER, modelled as the Emperor Napoleon, 10 cm wide; two framed portrait miniatures of the Emperor Napoleon and the Empress Josephine, on ivory, circular, 16.3 cm diam; a portrait miniature of an officer, half length, on ivory, Dutch School, early 19th Century
9 cm high (4)
f 300-500
- 297
A PORTRAIT MINIATURE OF A GENTLEMAN, said to be Marronus, seated at his writing desk in his study, inscribed on the reverse, French School, 1806, oval, on ivory, framed
16 cm high
f 700-900
- 298
A PEWTER CHARGER marked with a crowned rose
50 cm diam
f 500-700
- 299
FIFTEEN VARIOUS PEWTER ITEMS comprising eight dinner plates, 25 cm diam; a charger, 46 cm diam; two bowls; two brandy bowls with shaped handles; and two various plates
19 and 20.5 cm diam (15)
f 300-500
- 300
A PEWTER INKSTAND with circular openwork body on foliate feet containing two demi-lune compartments for ink and sand
9 cm diam
f 400-600

- 301
A PEWTER GERMAN TAILOR'S GUILD GOBLET AND COVER, the baluster shaped body applied with lion masks and engraved with a pair of scissors and dated 1661, on spreading foot, the domed cover with further lion masks surmounted by a Roman soldier with inscribed shield
54 cm high
f 1.000–1.500
- 302
A PEWTER BALUSTER-SHAPED 'ENGELKAN' with plain handle and thumbpiece to the domed cover, 27 cm high; and a pewter plate, 19th Century
36 cm diam (2)
f 600–800
- 303
A PAIR OF PEWTER CANDLESTICKS each with multi-baluster shaft, shaped domed base and with loose nozzle, 22.5 cm high; and a pewter tobacco-box, the square body with rounded angles, domed cover and baluster finial
17 cm high (3)
f 200–400
- 304
A PEWTER BALUSTER-SHAPED 'REMBRANDT-KAN' with plain handle and thumbpiece to the domed cover, 18th Century (restorations)
21 cm high
f 1.000–1.500
- 305
A PEWTER DINNER PLATE, the border inscribed with 'JOACHIM.DHOMAS.HARTTUNG.1703.GREYN.V. SEIDEN.WIRCKER', touch marks a fielded grape with GLP twice, and three towers above Proio 1691
24 cm diam
f 400–600
- 306
A PAIR OF WHITE-LACQUERED AND GILT TIN CHESTNUT VASES, the oval body applied with ring-handled lion masks on a stepped base and raised cover with acorn finial, 19th Century
33 cm high (2)
f 300–500
- 307
A TOLE GILT AND BLACK-LACQUERED POLESCREEN painted with chinoiserie, 19th Century, 36 cm high; a green painted cast iron scale with openwork base and two brass pans, 48 cm wide; a tin red-lacquered pear-shaped coffee urn on three scrolling legs and a brass triangular brazier, 19th Century, 33 cm high; and an oak cigar-box decorated with foliage and acorn, 19th Century (4)
f 500–800
- 308
A PEWTER BLACK-LACQUERED PEAR-SHAPED COFFEE URN, the body painted with peasants in a naturalistic landscape, on three scrolling legs and a triangular brazier with openwork gallery, 19th Century
46 cm high
f 600–800
- 309
A PEWTER BLACK-LACQUERED PEAR-SHAPED COFFEE URN, the body decorated with gilt and mother of pearl flower-sprays, on three scrolling legs and a triangular brazier with openwork gallery, 19th Century
40 cm high
f 500–600
- 310
A PEWTER RED-LACQUERED PEAR-SHAPED COFFEE-URN decorated with gilt star motives, on three scrolling legs and copper triangular brazier, 47 cm high; and a pewter pear-shaped coffee-urn on three scrolling legs
38 cm high (2)
f 600–800
- 311
A BRASS AND COPPER BALUSTER-SHAPED MILK EWER
52 cm high
f 400–600
- 312
A BRASS TWO-HANDLED BRASERO; and a wrought iron stand en suite with three scrolling supports, 17th Century
89 cm high (2)
f 700–1.000
- 313
A BRASS AND COPPER COALBIN with tapering body and swing handle, 19th Century, 45 cm high; and a brass hall-lamp with cylindrical glazed body, openwork top and ring handle (fitted for electricity), 19th Century
56 cm high (2)
f 500–800
- 314
A BRASS AND COPPER COALBIN with tapering body and swing handle, the domed lid with vase-shaped finial, 19th Century
40 cm high
f 500–700
- 315
A BRASS CAULDRON with globular body and swing handle
29 cm high
f 300–500

353

A OAK FOOTWARMER with rectangular openwork top and brass swing handle carved with geometrical motives, 19th Century
20 cm high

f 600–800

354*

A MAHOGANY PEAT BUCKET with slatted body and moulded base on claw feet containing copper liner with a brass swing handle, 19th Century
35 cm high

f 700–900

355

A SLATTED WOOD 'THEESTOOF' with tapering ribbed body and domed vase, brass liner and swing handle, 41 cm high; and a slatted wood bucket-shaped 'theestoof' with brass liner and swing handle
34 cm high

(2)

f 700–900

356 No lot

357

A ROSEWOOD, KINGWOOD AND WALNUT-VENEERED 'THEESTOOF', the square banded ring-handled body with brass liner, on square tapering legs, 19th Century
49 cm high

f 300–500

358

A MAHOGANY BANDED 'THEESTOOF', the diabolo-shaped slatted body on ball feet, brass liner and swing handle, 19th Century, 43 cm high; and a brass kettle with swing handle on an openwork brazier

(3)

f 400–600

359

A GREEN PAINTED WROUGHT-IRON AND BANDED CHEST with shaped lockplate and swing handles, 17th Century, on a later wood stand with claw feet (restorations)
47 cm wide

f 2.500–3.500

360

A MAHOGANY BOAT-SHAPED AND BRASS-BANDED 'THEESTOOF' with brass liner and swing handle, 19th Century; and a brass kettle with swing handle

(2)

f 400–600



[361]

361

A PAIR OF LACQUERED PEWTER CHESTNUT VASES, the boat-shaped body applied with ring-handled lion masks and decorated with gilt foliage and a landscape with birds, on a stepped foot, domed cover and shaped finial, 19th Century
33 cm high

(2)

See illustration

f 3.500–4.500

362

A BLACK LACQUERED AND GILT PEWTER COFFEE URN, the pear-shaped body painted with a chinoiserie landscape and scrolling foliage, on three scrolling legs and a brass concave-sided brazier with openwork gallery, 19th Century
48 cm high

f 800–1.000

363

A 16TH CENTURY BRASS TABLE CANDLESTICK with ribbed stem and pierced nozzle, on circular moulded base with drip-tray
24 cm high

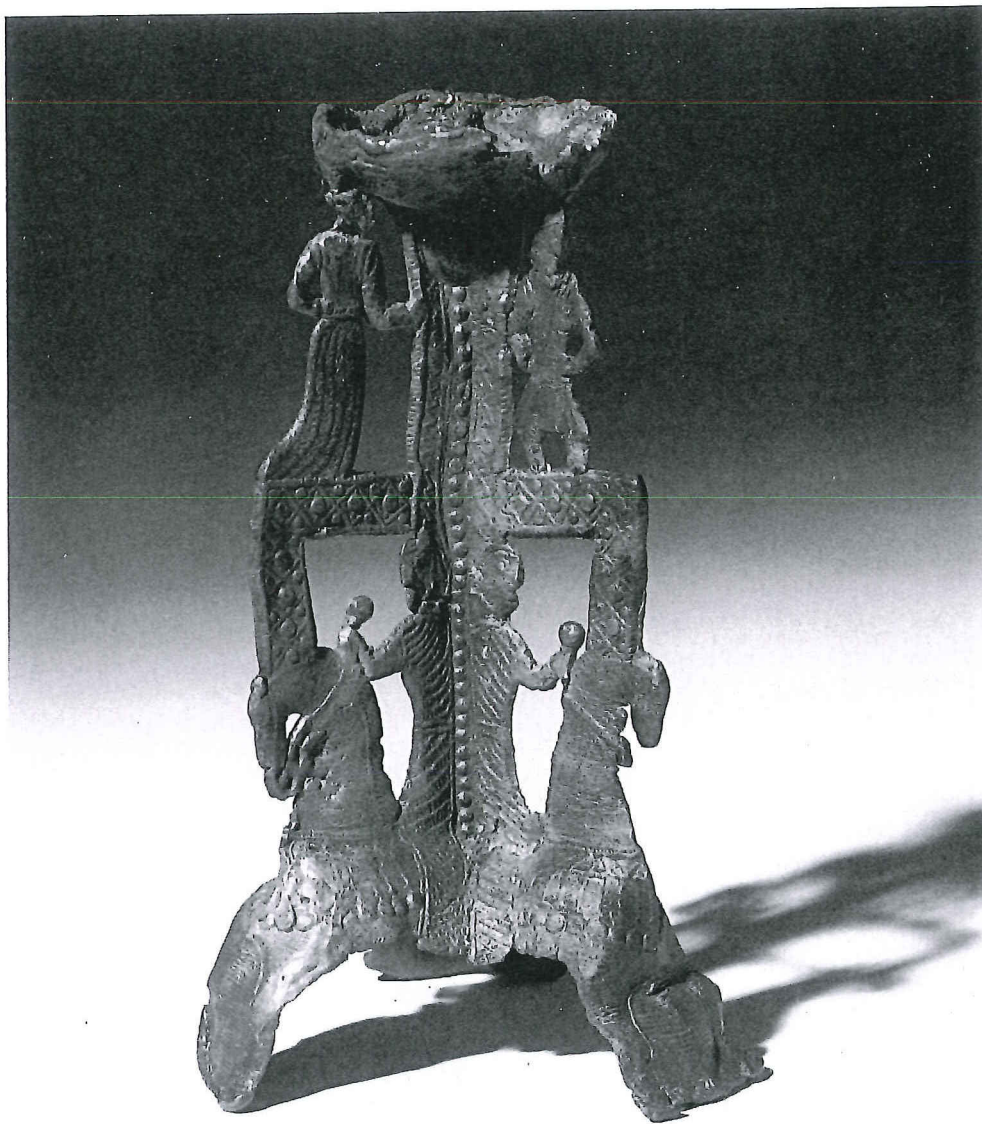
See illustration (p. 53)

f 3.000–4.000

364

A MAHOGANY VENEERED AND BANDED TABLE TOILET with swivel mirror above a compartment flanked by two short drawers and a single frieze drawer, on square fluted feet, 19th Century
62 cm high

f 400–600



[366]

366

A VERY RARE PEWTER CANDLESTICK, the nozzles on tripartite support of male and female figures on bands with entrelacs to the horseman base, 12th-13th Century (restored)
13.5 cm high

LITERATURE:

cf. B. Dubbe, *Tin en Tinnegieters in Nederland*, p. 39, pl.20 and 21, pp. 174–175
Exhibition catalogue 'Brugge Onderzocht', 1988, pp. 179–181, pl. 161

This highly important and very rare candlestick is similar to the other examples excavated in Brugge, Rijnsburg and Middelburg. In all, only six candlesticks of this particular type are known. The metal is a specific lead-pewter alloy and it is not unlikely that moulds were used to make a small edition.

It is difficult to give a precise date for these candlesticks, but both the 12th (cf Dubbe) and 13th (cf Brugge onderzocht) Century have been suggested. The geometrical decoration, the very specific dresses and the decorative horses armour suggest an Anglo-Norman origin.

Similar candlesticks are in the Museum van Oudheden, Leiden, and in the Gruuthuus Museum, Brugge.

See illustration

f 35.000–40.000