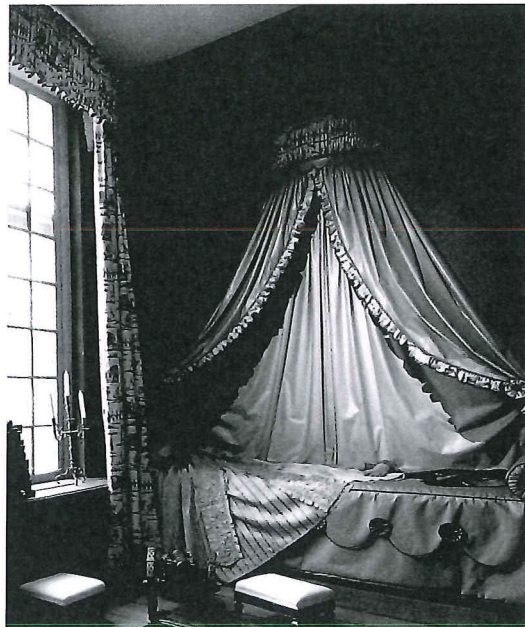
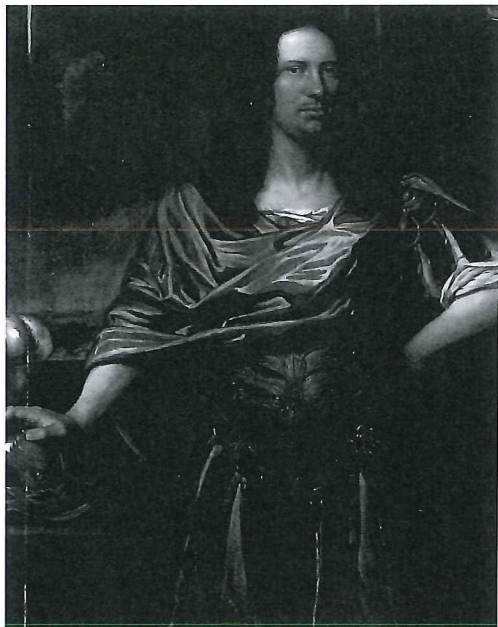


CCM

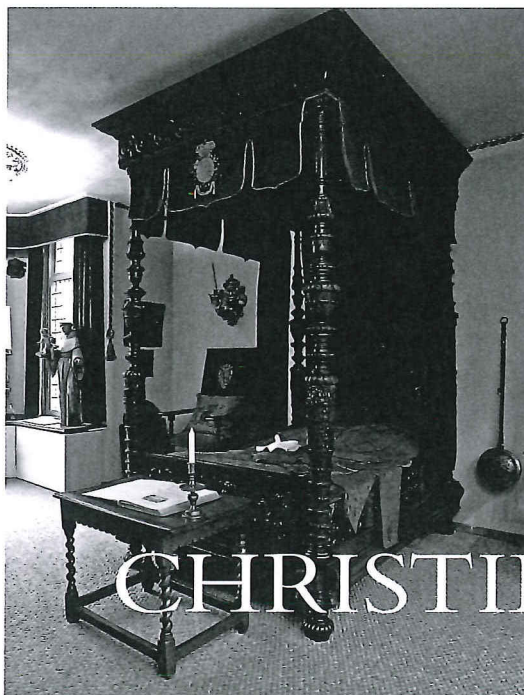


AMSTERDAM

20 ROOMS

THE PRIVATE COLLECTION OF
THE LATE MRS ELIAS-VAES

*Tuesday 27 April
Wednesday 28 April and
Thursday 29 April 2010*



CHRISTIE'S



128-130



131

128
A SOUTH GERMAN ETCHED IRON CASKET
 EARLY 17TH CENTURY

Decorated overall with flowers and panels depicting Noble men and women the hinged lid with intricate lock mechanism to the reverse, enclosing a red-painted interior, with carrying handles to the sides, on toupie feet
 27 cm. high x 47 cm. wide x 26 cm. deep
 €4,000-6,000

US\$ 5,500-8,200

129
A LARGE PEWTER RELIEF CAST DISH DEPICTING MARS
 PROBABLY FRENCH OR GERMAN, 19TH CENTURY

The edge with bearded masks, the reverse stamped with maker's mark *CM*
 52 cm. diam.
 Together with a South European parcel-gilt and silvered brass relief cast dish, 19th Century - 51.5 cm. diam.
 €400-600

(2)

US\$ 550-820

130
A FRENCH IRON MISSAL BOX
 LATE 15TH CENTURY

The domed rectangular lid with handle, enclosing a plain interior
 37 cm. high x 37 cm. wide x 23 cm. deep
 €5,000-8,000

US\$ 6,900-11,000

131
A RECTANGULAR PARCEL-GILT POLYCHROME GESSO RELIEF OF THE
MADONNA, CHILD AND ST. JOHN THE BAPTIST
 ITALIAN, PROBABLY 19TH CENTURY

With an integrally cast stiff-leaved border and later moulded walnut frame; the relief broken and repaired, losses, the polychromy and gilding refreshed
 62.7 x 53.5 cm. the relief
 €2,000-3,000

US\$ 2,800-4,100

132 NO LOT



211 (part lot)

211

**A COLLECTION OF NORTH EUROPEAN
PEWTER OBJECTS**
18TH-19TH CENTURY

Comprising: A French 'broc-de-vin', circa 1800; Three Dutch cylindrical measures; A French flagon; A jug, possibly Dutch; A dish; A chamberpot, possibly Delft 16th Century. And an engraved bucket, possibly German, 17th Century (9)
€1,000-1,500 US\$1,400-2,100



212

212

**A NORTH EUROPEAN WOOD AND LEATHER
DRUM**

PROBABLY 19TH CENTURY

With slatted body

27 cm. high x 39 cm. diam.

And a bronze cauldron - 22 cm. high x 36 cm. diam. (2)

€400-600

US\$550-820



213

213

A PAIR OF GILT CARVED WOOD EAGLES
DUTCH, LATE 18TH CENTURY

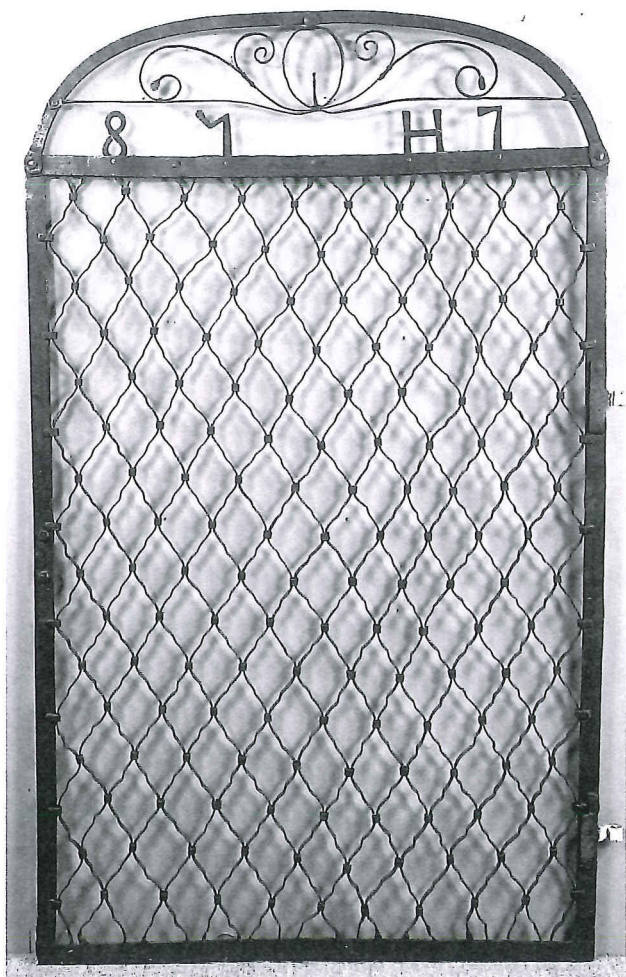
Possibly the ornamental feet of a piece of furniture

42.8 cm. high

€1,500-2,000

US\$2,100-2,700 (2)

THE APARTMENT
(Lots 252A-299)



252A

252A
A NORTH EUROPEAN WROUGHT IRON DOOR
19TH CENTURY

The arched top above initials *HI / H7* and a trelliswork filled panel, the right side with part-hinges
88 cm. high x 115 cm. wide
€800-1,200

US\$1,100-1,600

253
TWO VARIOUS DUTCH PEWTER FLAGONS
18TH/19TH CENTURY

24 and 25 cm. high
Together with a French pewter flagon, 18th Century -22 cm. high (3)
€1,000-2,000 US\$1,400-2,700

254
A GERMAN IRON MOUNTED OAK MONEY BOX
18TH CENTURY

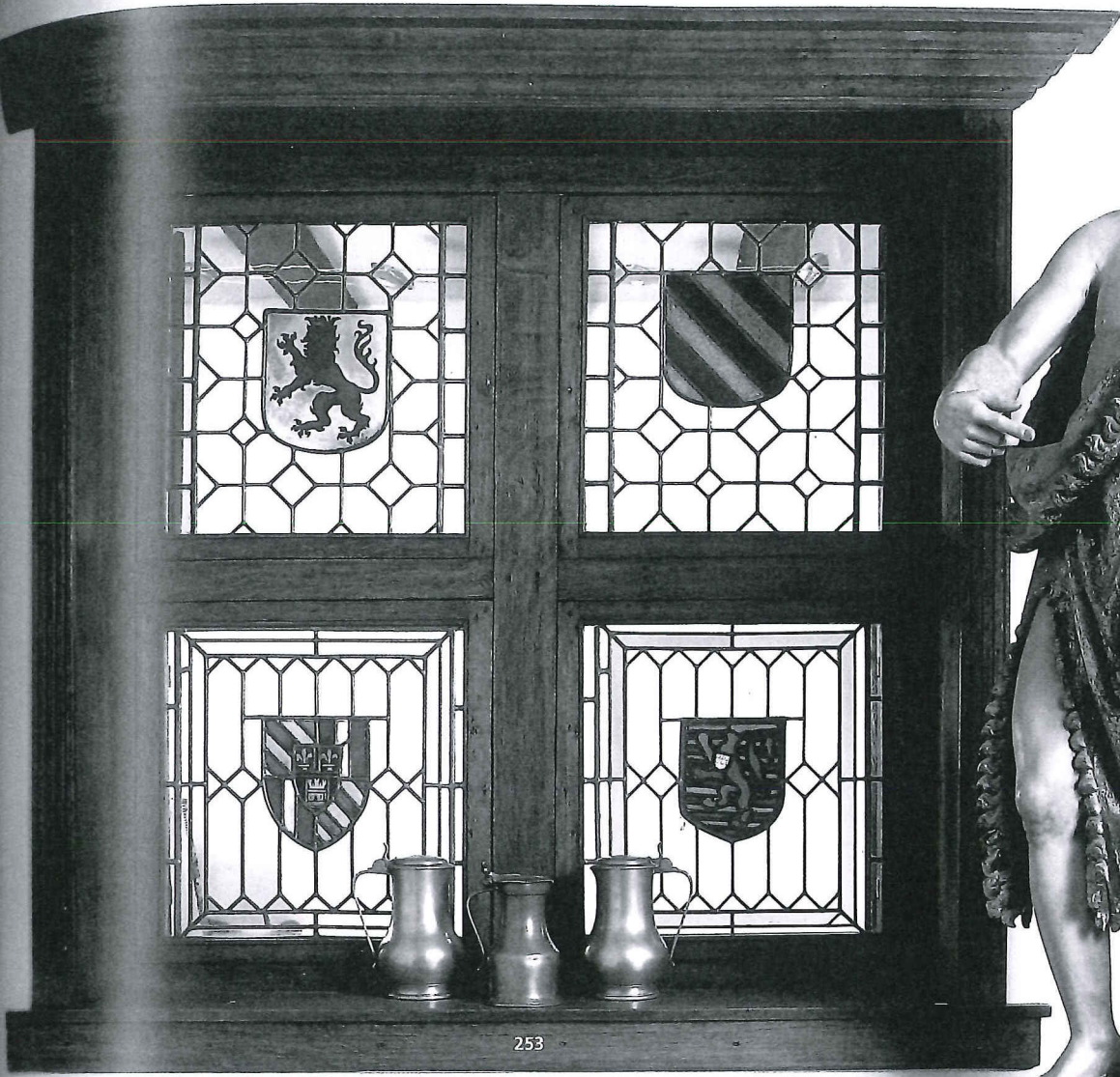
The hinged rectangular lid enclosing a plain interior, inscribed *Bedencket den Armen*
31 cm. high x 17 cm. wide x 15 cm. deep
€300-400 US\$420-550

255
A POLYCHROME DECORATED GERMAN MONEY CHEST
17TH CENTURY AND LATER

Decorated overall with flowers, with wrought iron carrying handles to the sides and a false lock plate to the front
39 cm. high x 75 cm. wide x 40 cm. deep
€2,000-3,000 US\$2,800-4,100

256
A PARCEL-GILT POLYCHROME CARVED WOOD FIGURE OF ST JOHN
THE BAPTIST

SPANISH, LATE 16TH OR EARLY 17TH CENTURY
Depicted standing with his proper right hand pointing to the Lamb of God, minor losses to the decoration and gilding, overall slight chips and losses to the extremities
142 cm. high
€7,000-10,000 US\$9,600-14,000



253



227

254



255



257

257
**A CARVED OAK RELIEF OF ANNA SELBDRITT,
 ST FRANCIS AND A DONOR FIGURE**
 FLEMISH, 19TH CENTURY

St Anne, the Virgin and the Child depicted seated with the two male figures leaning on the pew to either side, minor traces of polychromy and worming, minor losses and replacements
 49 cm. high

€2,000-4,000 US\$2,800-5,500

PROVENANCE:

Acquired from Paul Brandt, Amsterdam.

258
A DUTCH OAK CUPBOARD "KEEFTKAST"
 17TH CENTURY AND LATER

The oversailing cornice above a frieze carved with scrolling acanthus and birds and a pair of arched panelled doors, flanked and divided by fluted pilasters

193 cm. high x 175 cm. wide x 78 cm. deep

€1,200-1,600 US\$1,700-2,200

259
A SPANISH CARVED GILTWOOD MIRROR
 19TH CENTURY

The elaborately carved frame with mascarons to the shield-shaped angles, divided by rectangular panels applied with ecclesial attributes, centred by the rectangular plate

87 cm. high x 79 cm. wide

€800-1,200 US\$1,100-1,600



258

260
A LARGE PEWTER FLAGON
 PROBABLY SWISS, MARKED DILLIER, 18TH CENTURY

With bulbous body

30 cm. high

Together with a French flagon, 18th Century -
 26 cm. high (2)

€1,500-2,000 US\$2,100-2,700

261
A SPANISH WALNUT CENTRE TABLE
 19TH CENTURY

The moulded rectangular top above a foliate-carved frieze, with two drawers and spirally turned legs joined by scrolling iron S-shaped stretcher

91 cm. high x 139 cm. wide x 73 cm. deep

€1,000-1,500 US\$1,400-2,100

262
A FRENCH WALNUT HIGHBACK ARMCHAIR
 OF LOUIS XIV STYLE, 19TH CENTURY

The padded back and seat covered in floral petit point upholstery

€400-600

US\$550-820

258



259

260



261



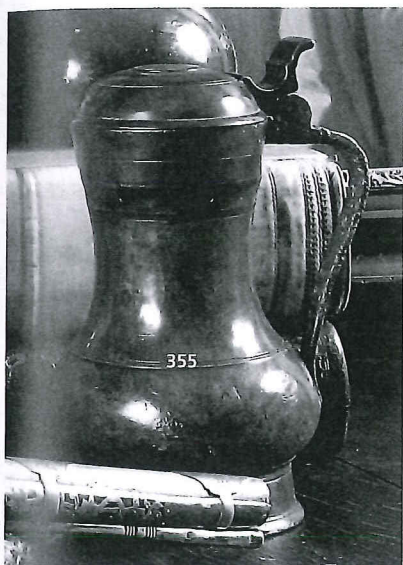
262

354

A VERY RARE GERMAN MINIATURE INFANTRY HALF-ARMOUR; AND A MINIATURE ENGRAVED IRON HELMET IN ITALIAN HIGH RENAISSANCE STYLE
EARLY 17TH CENTURY; 19TH CENTURY

Comprising 'almain collar' of three hinged neck plates front and rear, and spaulders each of five articulated lames, matching breast-plate and back plate, each with articulated skirt, the frontal skirt carrying tassets, with cowters, lower cannons and a pair of gauntlets: on a stand together with a 19th century burgonet in early 17th century style; and the miniature helmet modelled on the so-called antique style and engraved with monsters and figures from Roman mythology, the details picked out in brass

The miniature helmet: 6 cm. (2)
€1,500-2,000 US\$2,100-2,700



355

A DUTCH PEWTER FLAGON "REMBRANDTKAN"
17TH OR 18TH CENTURY

Apparently unmarked, the domed lid and scroll thumbrest with double hinge above a slender neck and bulbous body
22 cm. high

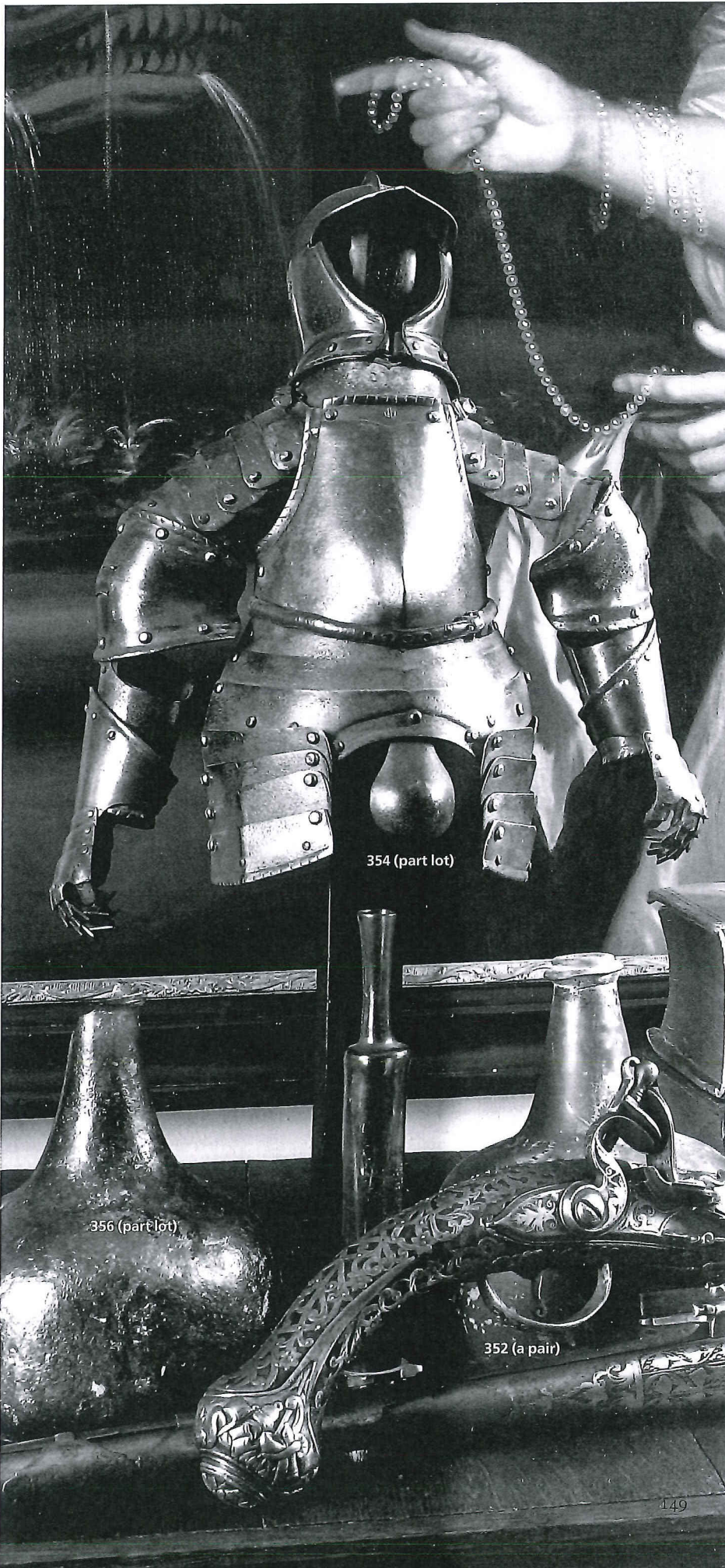
€2,500-3,500 US\$3,500-4,800

356

A COLLECTION OF VARIOUS GLASS BOTTLES
17TH CENTURY AND LATER

Comprising five various green and blue tinted and lustre-glaze bottles; a small brown bottle; and a slender green bottle, damages
22.5 cm. high max. (7)

€100-150 US\$140-210



354 (part lot)

356 (part lot)

352 (a pair)



443

A DUTCH SMALL PEWTER FLAGON "PIJPKAN"

15TH CENTURY

The bulbous body with straight spout on three legs terminating in hoof feet, damaged

10.5 cm. high

€800-1,200

US\$1,100-1,600

PROVENANCE:

By repute excavated in Rotterdam.

447

A DUTCH PEWTER JUG

ALKMAAR, 15TH OR 16TH CENTURY

Marked to the lid for Alkmaar and with a lozenge containing an indistinct letter within a lozenge, with a single hinged double acorn thumbrest

21 cm. high

€1,000-1,500

US\$1,400-2,100

PROVENANCE:

By repute excavated during the digging of the Noord Hollands Kanaal.

444

AN ENGLISH PEWTER CUP

19TH CENTURY

With handle

5.5 cm. high

€200-300

US\$280-410

445

A DUTCH PEWTER FLAGON

DELFT, SECOND HALF 16TH CENTURY

The domed lid marked for Delft to the interior and with double ball thumbrest to the single hinge above a loop handle and turned spreading body

10.4 cm. high

€1,000-1,500

US\$1,400-2,100

448

A DUTCH PEWTER JUG, PIJPKAN

LEIDEN, FIRST HALF 16TH CENTURY

The circular lid marked with crossed keys and the letter P, attached with a single hinge and double acorn thumbrest to the loop handle, The ovoid body with a single spout to one side set into a stylised wolf's head

11.9 cm. high

€6,000-8,000

US\$8,300-11,000

PROVENANCE:

By repute excavated in Rotterdam.

This peculiar little jug, called pijpkan or schapenkan, traditionally has had different attributions pertaining to its use: such as to feed lambs, or to feed babies. B. Dubbe however maintains that both ideas are unlikely as the spout is much too small to pass baby food through and a use to feed lambs seems impractical. Dubbe believes that these small jugs were used to drink liquor. The stylised wolf's head from which the spout issues is an extremely rare feature.

446

A DUTCH PEWTER FLAGON

15TH CENTURY

The domed lid with double ball thumbrest to the single hinge above a loop handle and cylindrical spreading body

13.2 cm. high

€800-1,200

US\$1,100-1,600



448 detail



485

485
A MOTHER-OF-PEARL RELIEF CARVED SHELL
 POSSIBLY PORTUGUESE COLONIAL, 19TH CENTURY
 Depicting the Holy Family
 15 x 14.5 cm.
 €200-400

US\$280-550



486

486
A NORTH EUROPEAN PEWTER FLASK
 17TH CENTURY

Of bun shape with screw cap
 7 cm. high
 Together with a miniature bronze lavabo hanging from a bronze stand inset
 with a bowl - 15 cm. high overall; and a bronze miniature chalice - 9 cm.
 high; and a gilt bronze christatory - 5.5 cm. high x 8.5 cm. wide (4)
 €400-600 US\$550-820



487
A CARVED WOOD ARCHITECTURAL FRAGMENT IN THE FORM OF A
DOG
 PROBABLY FRENCH, 14TH OR 15TH CENTURY
 Shrinkage cracks, worming and minor losses
 48 cm. long
 €2,000-3,000

US\$2,800-4,100

488
A PATINATED CARVED WOOD HOLY WATER STOUP
 19TH CENTURY
 With a figure of Christ as the Man of Sorrows; mounted to the centre of
 the bowl
 24 cm. high
 €700-1,000 US\$960-1,400



622

A NORTH EUROPEAN BRONZE CANDLESTICK
19TH CENTURY, OF 14TH CENTURY STYLE

18 cm. high

Together with two various bronze pricket candlesticks, 19th Century - 19

and 14 cm. high

€1,500-2,000

US\$2,100-2,700

624

A BRASS EPIPHANY CANDLESTICK
NETHERLANDISH, FIRST HALF 15TH CENTURY

The knopped shaft with threaded pricket and twin sockets on angular branches, on a bell shaped foot

24.9 cm. high

€4,000-6,000

US\$5,500-8,200

623

A NUREMBERG PEWTER RELIEF-TELLER DEPICTING FERDINAND II
17TH CENTURY

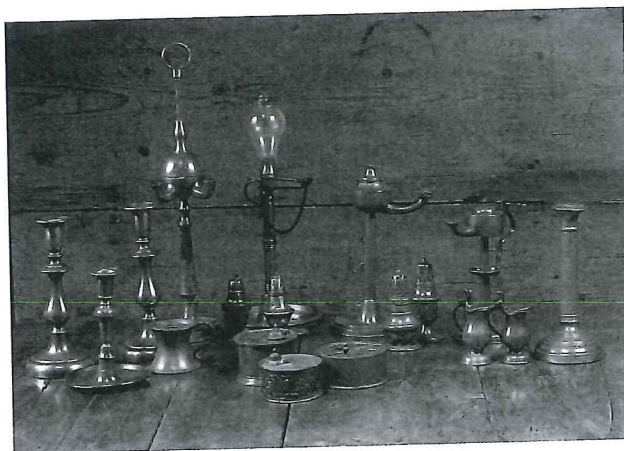
The rim with eleven electors

19.5 cm. diam.

€600-800

US\$830-1,100

LIVING ROOM,
17TH CENTURY
(Lots 652-759)



652

652
A COLLECTION OF VARIOUS PEWTER OBJECTS
18TH AND 19TH CENTURY, MAINLY DUTCH AND GERMAN
Comprising castors, candlesticks, oil lamps, and inkwells
€500-800

(18)
US\$690-1,100

656
A LARGE PEWTER FLAGON
PROBABLY SWISS, 18TH CENTURY

36 cm. high
Together with: Two various Dutch pewter flagons, 18th Century -22 and 23.5 cm. high; And a pewter flagon, probably Flemish, 18th Century -24 cm. high (4)
€1,500-2,000 US\$2,100-2,700

653
A NORTH EUROPEAN METAMORPHIC ARMCHAIR
17TH CENTURY AND LATER

The rectangular swivel back doubling as table top, resting on the arms, above ring-turned arm supports and plank seat
€800-1,200 US\$1,100-1,600

657
A DUTCH PEWTER FLAGON "REMBRANDTKAN"
FIRST QUARTER 17TH CENTURY, THE LID ASSOCIATED

The domed lid with scroll thumbrest and double hinge above the slender neck and bulbous body
17.5 cm. high
€1,500-2,500 US\$2,100-3,400
In her account books Mrs. Elias-Vaes notes that she purchased this flagon without a lid for fl. 200. She also notes *bodemvondst* i.e. excavated, however there is no mention where.

654
AN ENGLISH PEWTER MEASURE
19TH CENTURY

The bulbous body with shaped handle and stamped GALLON, the rim with a crowned mark
25.5 cm. high
€200-300 US\$280-410

658
AN ENGLISH OAK WING ARMCHAIR
19TH CENTURY, ADAPTED
€400-600 US\$550-820

655
A PEWTER ROCOCO TUREEN
PROBABLY GERMAN, 18TH CENTURY

30 cm. long
Together with: A pewter Rococo sauceboat, 18th Century; Two Dutch pewter porridge bowls, probably 19th Century; A Dutch pewter brandy bowl, 18th Century; And two bronze pans, possibly 17th/18th Century (7)
€300-400 US\$420-550

659
A DUTCH WOOLSTITCH EMBROIDERED CUSHION
OF 17TH CENTURY STYLE, 19TH STYLE
The green base foundation centred by a coat-of-arms within a floral border
54 cm. x 58 cm.
€400-600 US\$550-820

655 (part lot)

656

657

?

658

654

652 (part lot)

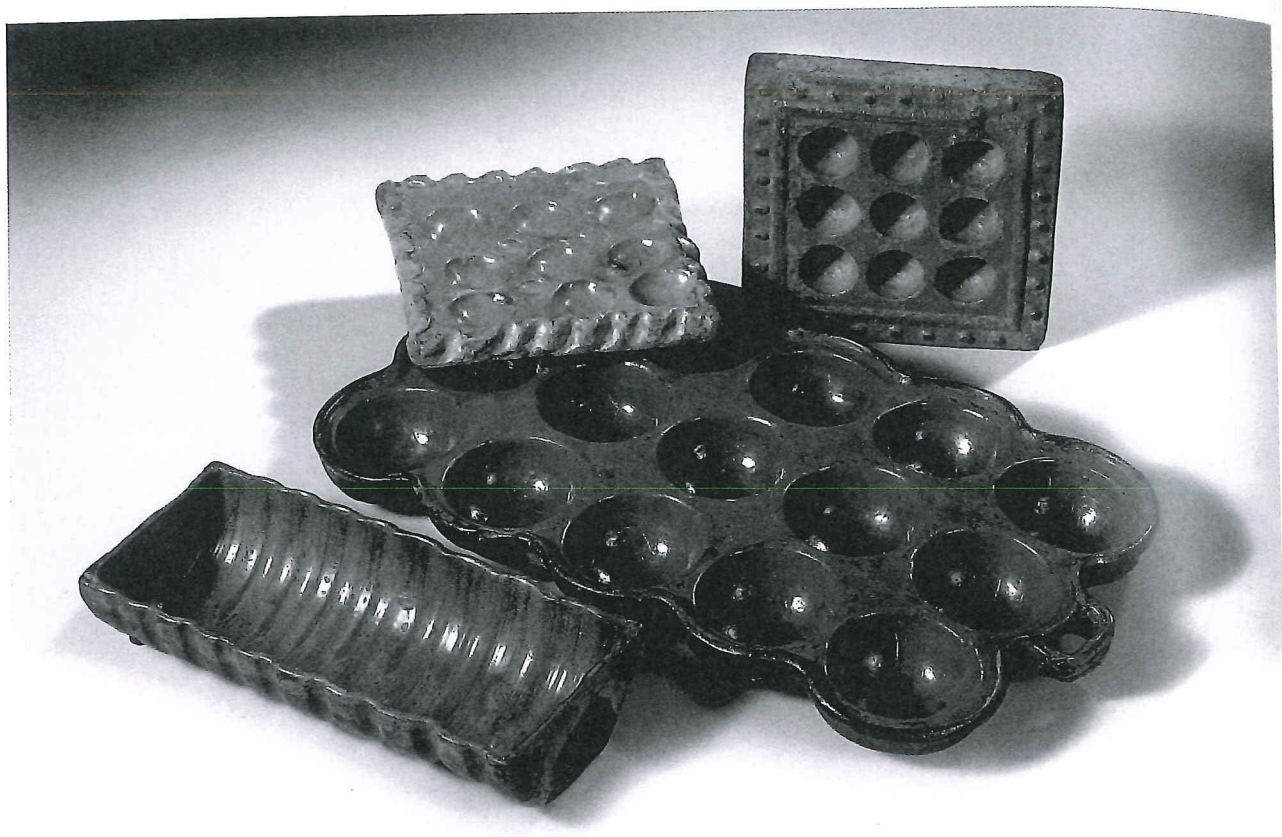
655 (part lot)

655 (part lot)

659

653





686

**686
FOUR NORTH EUROPEAN EARTHENWARE AND STONEWARE MOULDS
18TH CENTURY**

Comprising a green-glazed rectangular ribbed mould, 30 x 14 cm.; a mould with fifteen circular moulds, 49 x 30 cm.; and two moulds with nine circular moulds, 20 x 20 cm.

€80-120



US\$110-160 (4)

689

**A COLLECTION OF ELEVEN VARIOUS PEWTER FLAGONS
PROBABLY GERMAN, 18TH CENTURY**

28 - 14 cm. high

€1,000-1,500

(11)

US\$1,400-2,100

687

**A NORTH EUROPEAN OAK DRESSER
PART 18TH CENTURY**

The moulded rectangular cornice above two waved shelves, the base with a short drawer and two panelled doors (one locked)
204 cm. high x 182 cm. wide x 58 cm. deep

€1,500-2,000

US\$2,100-2,700

690

**A COLLECTION OF FIFTEEN DUTCH PEWTER MEASURES
19TH-20TH CENTURY**

Comprising measures from 1 centiliter to 2 liter

4.5 cm. - 26 cm. high

€1,000-1,500

(15)

US\$1,400-2,100

688

**A SET OF ELEVEN DUTCH DELFT BLUE AND WHITE PLATES AND A
PAIR OF BOWLS
18TH CENTURY**

The plates painted to the central roundel with a flowering garden, surrounded by fruit- and flower-sprays at the rim, 22.5 cm. diam.; and a pair of bowls decorated to the rounded exterior with large panels including flower-vases, 25 cm. diam., restoration

€300-500

US\$420-680 (13)

691

**A FLEMISH OAK REFELECTORY TABLE
19TH CENTURY, INCORPORATING EARLIER ELEMENTS**

The plank top above a stop-fluted frieze and ring-turned legs joined by a box stretcher

77 cm. high x 182.5 cm. wide x 82 cm. deep

€3,000-4,000

US\$4,200-5,500

688



688



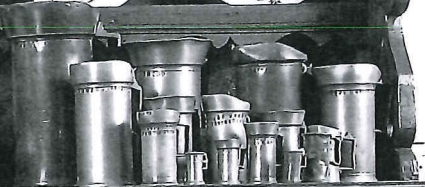
689



688



690



689



687

691





716 (part lot)

716
AN ASSORTED GROUP OF GERMAN WESTERWALD STONEWARE PEWTER-MOUNTED JUGS
 MAINLY 17TH CENTURY
 Comprising a cylindrical jug, *Humpen*, modelled with a frieze in relief, 22 cm. high; a polychrome cylindrical jug with lid dated 1616, *Humpen*, 27 cm. high; a set of five jugs modelled with concentric bands, 17 cm. high; and a salt cellar, 9 cm. high, damage and restoration
 Together with three various ewers (11)
 €500-700 US\$690-960

717
A NEAR PAIR OF DUTCH BRASS NOZZLE CANDLE STICKS
 17TH CENTURY
 Each with tapering cylindrical nozzle above a baluster shaft and central dished drip-pan on domed circular foot; one nozzle pierced 17 cm. high
 Together with a Dutch brass nozzle candlestick, early 18th century, the multi-baluster shaft centred by a dished drip-pan - 22.5 cm. high (3)
 €1,200-1,800 US\$1,700-2,500

718
A GERMAN PEWTER GUILD BEAKER 'ZUNFTPOKAL'
 DATED 1688
 The double domed lid surmounted by a figural finial and engraved with the text *habe es gestochen ich Johannes Budich*, the body engraved with the text:
*HANS MATHEUS OTTO
 DER. DI. SEN. WILKOM. NIMET. AN
 UNT. IHM. S. EN. US. SO. SWER. KE. ME. AN
 DER. SOL. SEIN. STA. FE. TUN.
 ANNO 1688*
 53 cm. high
 €2,000-4,000 US\$2,800-5,500
 The German "Zunftpokal" or "Wilkomm" was in use from the 17th century onwards and would traditionally be passed around at the opening of guild meetings for a welcome drink. Three comparable examples are illustrated in F. Aichele, *Zinn*, Munich, 1977, pp. 131-132.

719
A PAIR OF BRASS PRICKET CANDLESTICKS
 SOUTH GERMAN, PROBABLY NUREMBERG, 17TH CENTURY
 Each with a pricket spreading to a bulbous waist on a domed platform rivetted to the multi-baluster shaft
 31 cm. and 29 cm. high (including prickets) (2)
 €2,500-3,500 US\$3,500-4,800
 For comparable candle sticks see O. ter Kuile, *Koper en Brons*, Amsterdam, 1986, p. 97, no. 129.



726 (part lot)

726

A COLLECTION OF EIGHT VARIOUS RELIGIOUS PEWTER OBJECTS
16-19TH CENTURY

Comprising: A Flemish Corpus Christi, 18th Century -27 cm. high; A Chismatorium, possibly 16th/17th Century; A flask, 19th Century; A pierced crown; A South Netherlandish chalice -21 cm. high; An engraved almsdish, 35 cm. diam.; A relief cast plate with biblical scene, -24 cm. diam.; And a holy-water stoop (8)
€1,000-2,000 US\$1,400-2,700



727

728

727

A SWISS PEWTER FLAGON 'GLOCKENKANNE'
18TH CENTURY

The lid with loop handle canted spout, engraved shield to one side
24 cm. high
Together with a barrel shaped tankard, German, circa 1805, with knob handle, the lid inscribed and dated *J.S.W. 1805* -18.5 cm. high (2)
€500-800 US\$690-1,100

728

A DUTCH PEWTER FLAGON "REMBRANDTKAN"
17TH OR 18TH CENTURY

Marked to the underside *A**T* above a rose, with scrolled thumbrest decorated with a mascaroon, double hinge, bulbous body
28 cm. high
Together with a Dutch pewter plate, Groningen Rienewerf, 19th Century -39 cm. diam. (2)
€1,500-2,000 US\$2,100-2,700

729 NO LOT



730

A DUTCH PEWTER WINE FLAGON "JAN STEEN KAN"
FIRST QUARTER 17TH CENTURY

The domed lid with waved double hinged thumbrest above a waved handle and slender neck, the bulbous body issuing the hexagonal spout with scrolling lid, apparently unmarked
20.7 cm. high

€10,000-15,000

US\$14,000-21,000

PROVENANCE:

Anon. sale, Paul Brandt, Amsterdam, 1970's (fl. 3,900).

731

A POLYCHROME DECORATED WOOD AND PEWTER CHRISMATORIUM
PROBABLY SOUTH GERMAN, 18TH CENTURY

The rectangular wooden lidded box with iron handle, lock and hinges, the interior with three compartments filled with pear shaped pewter containers, engraved with *FO* and a crucifix

18 cm. high x 36 cm. wide x 14 cm. deep

Together with: A large pewter flagon with bulbous body, single hinge, possibly Portuguese, 17th/18th Century -26 cm. high; A French pewter jug, marked *Amiens*, 17th Century -18 cm. high; A pewter jug, possibly Dutch, 17th Century -13 cm. high; And a three-piece pewter chrisatorium (7)
€1,000-1,500

US\$1,400-2,100

732

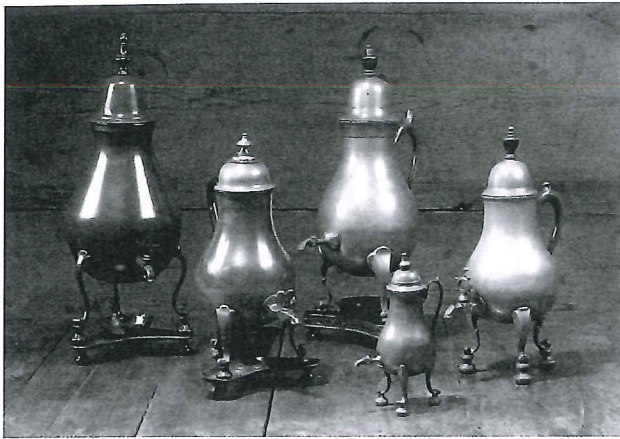
A PEWTER ONE HANDED JUG
PROBABLY FLEMISH, 17TH CENTURY

The circular lid with thumbrest to the single hinge and scroll handle above the ring-turned baluster body
25 cm. high

Together with a Flemish engraved pewter dish, 19th Century, inscribed *Jan de Valleur*, 35 cm. diam.; and a pewter pilgrim's flask, 19th Century, 20 cm. high (3)

€2,000-3,000

US\$2,800-4,100



733

733
FOUR DUTCH PEWTER COFFEE POTS 'KRAANTJESKANNEN'
 SECOND HALF 18TH CENTURY
 49 cm. - 22 cm. high
 Together with a Dutch copper 'kraankan', 19th Century (5)
 €300-400 US\$420-550



735

735
A COLLECTION OF TWENTY-SIX VARIOUS NORTH EUROPEAN PEWTER OBJECTS
 18TH - 20TH CENTURY
 Comprising ewers, tankards and measures (26)
 €600-800 US\$830-1,100



734

734
A COLLECTION OF FIFTEEN VARIOUS ENGLISH PEWTER MEASURES
 18TH/19TH CENTURY
 Comprising three brass banded 'imperial measures' and a double handed quart
 Together with an English three-piece pewter inkset, 19th Century; And a Gothic-revival bronze mortar, signed *Bartolamio Spicer A L Anchora*, cast with mascarons to the angles and on octagonal foot, 19th Century -16 cm. high (17)
 €400-600 US\$550-820



736

736
A LARGE COLLECTION OF VARIOUS NORTH EUROPEAN PEWTER KITCHEN UTENSILS, SPOONS AND PLATES
 16TH - 19TH CENTURY
 Comprising various plates, bowls, butterboxes, spoons etc. and a casting-mould for a spoon
 Please note that this lot is sold "as is" and not subject to return
 €1,000-1,500 US\$1,400-2,100



746

747

748

**746
A NORTH EUROPEAN CUIR CISELÉ TRAVELLING WRITING CASKET
17TH CENTURY**

The domed hinged lid with lidded and marbled paper-lined compartment to the back, enclosing a fitted interior for writing utensils
7 cm. high x 25,5 cm. wide x 17 cm. deep

€1,000-1,500

US\$1,400-2,100



749 (detail of engraving on the reverse)

**747
A NORTH EUROPEAN WROUGHT IRON STRONGBOX
18TH CENTURY**

The hinged rectangular lid with handle enclosing a plain interior, with a French brass pad lock, 20th century
14 cm. high x 31 cm. wide x 18 cm. deep

€600-900

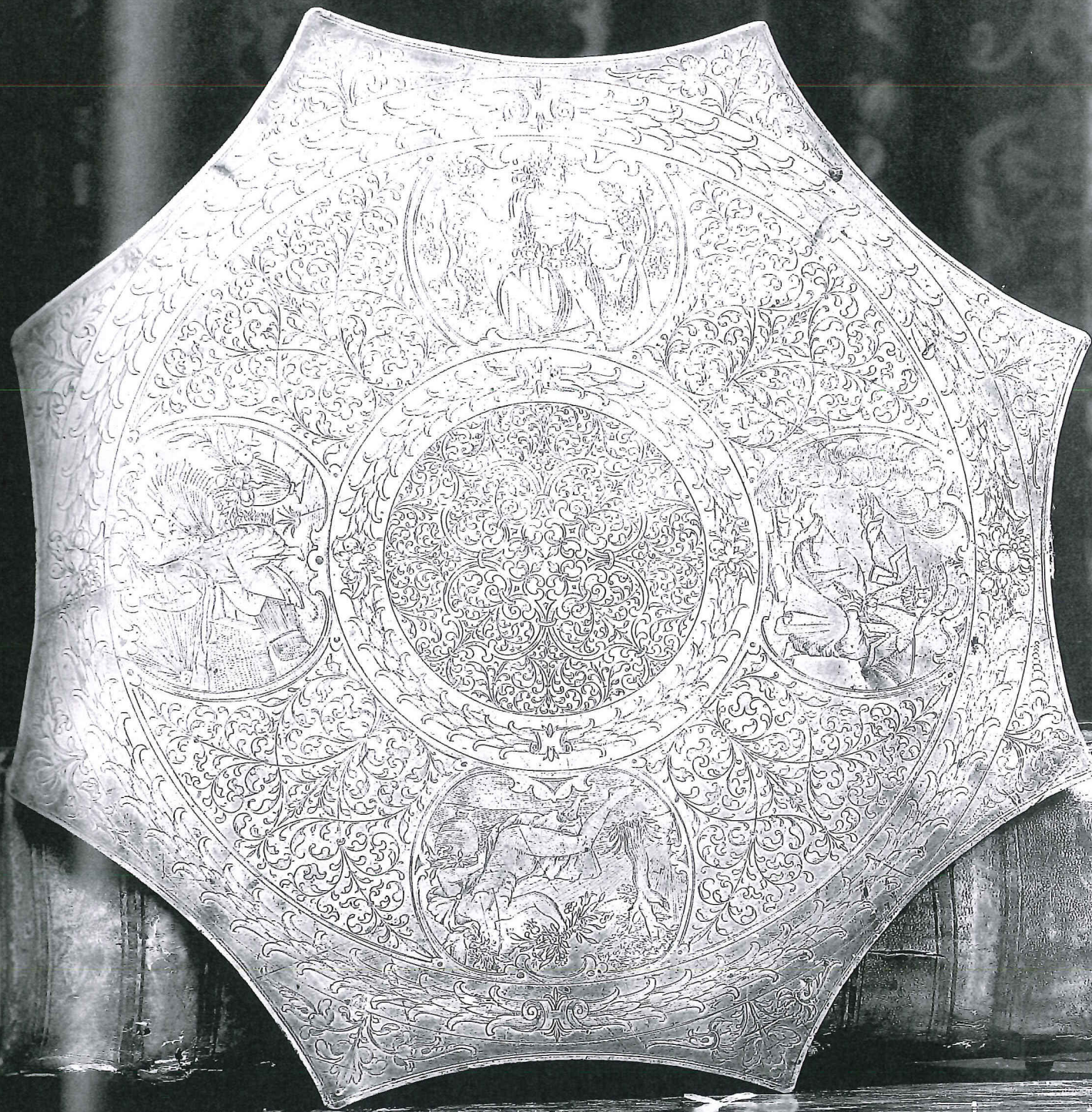
US\$830-1,200

**748
A SOUTH GERMAN IRON CASKET
EARLY 19TH CENTURY**

Etched overall with foliate bands and panels depicting Noble men the hinged rectangular lid enclosing a red-painted interior, on bun feet
12 cm. high x 16,5 cm. wide x 10,5 cm. deep

€2,000-3,000

US\$2,800-4,100



749
A GERMAN ENGRAVED PEWTER CAKE PLATTER "KUCHENPLATTE"
NUREMBERG, DATED 1615

The eight pointed platter marked for Nuremberg underneath the figure of spring, the front engraved with male and female figures emblematic of the four seasons, the reverse engraved with two coats-of-arms and with initials *H.V.G.* and date 1615

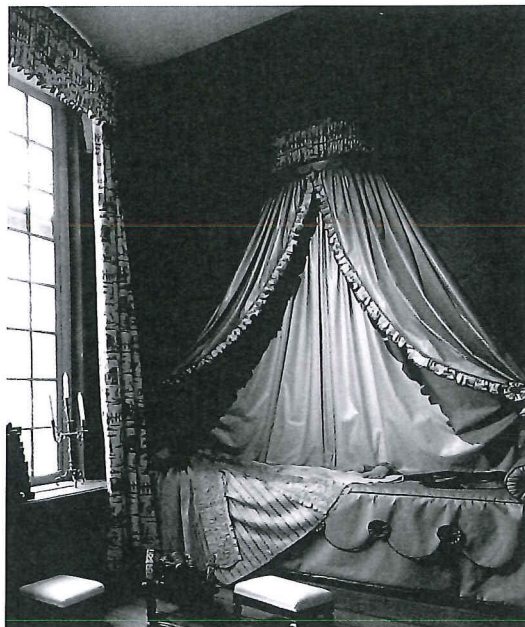
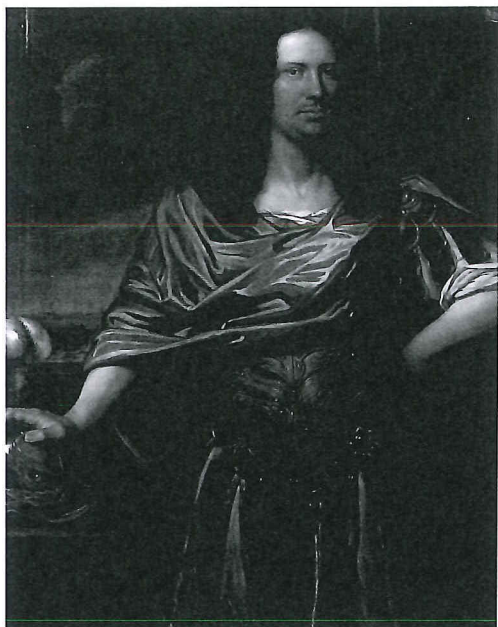
36.3 diam.

€1,000-1,500

US\$1,400-2,100

PROVENANCE:

Acquired from Prensela en Hamburger, Amsterdam.

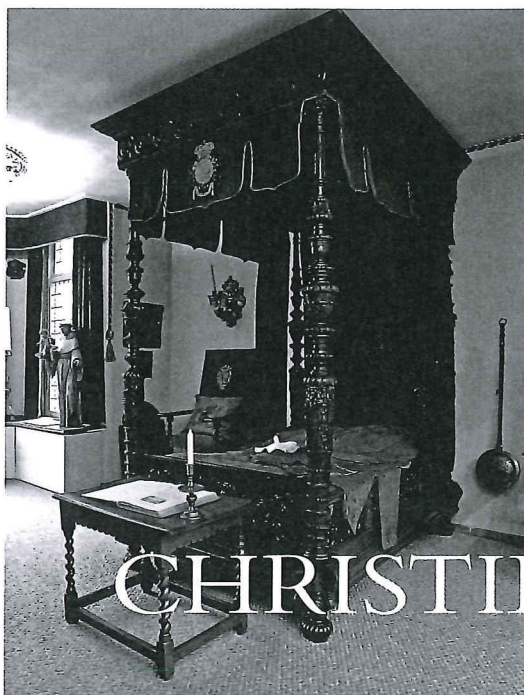


AMSTERDAM

20 ROOMS

THE PRIVATE COLLECTION OF
THE LATE MRS ELIAS-VAES

*Tuesday 27 April
Wednesday 28 April and
Thursday 29 April 2010*



CHRISTIE'S



771

**771
A GERMAN IRON-MOUNTED OAK CUPBOARD**

20TH CENTURY
The rectangular top above two doors
125 cm. high x 86 cm. wide x 45.5 cm. deep
€400-600

US\$550-820

772

**772
A DUTCH OR FLEMISH OAK CUPBOARD**

PART 17TH CENTURY
The rectangular top above a pair of panelled doors and a further wide door,
flanked and divided by stop-fluted pilasters
119 cm. high x 120 cm. wide x 52.5 cm. deep
€400-600

US\$550-820

**773
A PAIR OF FLEMISH BRASS PRICKET ALTAR CANDLESTICKS**

19TH CENTURY
The spreading shaft issuing cherubs above a triangular base on ball-and-
claw feet
81 cm. high (2)
€2,000-3,000

US\$2,800-4,100

**774
A COLLECTION OF VARIOUS PEWTER OBJECTS**

Comprising: A large dish with biblical scene, probably German, 17th
Century; Five various plates, 18th/19th Century; One plate, probably
Dutch, 17th Century; Ten various cups, 19th/20th Century; And a Dutch
bowl, probably 18th Century (18)
€1,000-1,500

US\$1,400-2,100

**775
AN ENGLISH OAK SIDEBOARD**

19TH CENTURY, CONSTRUCTED FROM 17TH CENTURY ELEMENTS
The superstructure with a pair of panelled doors above the base with a pair
of panelled doors enclosing a plain interior with one shelf
162 cm. high x 171 cm. wide x 59 cm. deep
€1,200-1,800

US\$1,700-2,500

**776
A DUTCH BRASS HALL LANTERN**

20TH CENTURY
The domed top above a glazed octagonal body
75 cm. high
Together with a Dutch brass and fruitwood warming pan, 19th Century,
115 cm. high; and a Dutch oak side chair, late 19th Century (3)
€600-800

US\$830-1,100

**777
A GERMAN POLYCHROME-DECORATED IRON MONEY CHEST**

17TH CENTURY
Painted overall with flowers and birds the hinged lid with pierced lockplate
to the reverse, engraved with mermaids
42 cm. high x 63 cm. wide x 47 cm. deep
€2,500-3,500

US\$3,500-4,800

773

773

774

775

777

776

776

774

776



THE LOUIS XVI ROOM
(Lots 889-959)

889

**A SET OF FOUR PARCEL-GILT AND WHITE-PAINTED PRICKET
CANDLESTICKS**

20TH CENTURY

Each with acanthus-carved and baluster-shaped shaft on a tripartite base
86 cm. high (4)
€800-1,200 US\$1,100-1,600

893

A SET OF SIX DUTCH MAHOGANY AND SYCAMORE DINING CHAIRS
EARLY 19TH CENTURY

Each with padded back and seat covered in beige cotton (6)
€600-800 US\$830-1,100

890

A PAIR OF DUTCH GILTWOOD FRAMES

19TH CENTURY

Each with circular later plate within a moulded frame, surmounted by
ribbon tie (2)
43 cm. high x 38 cm. wide
€600-800 US\$830-1,100

894

A DUTCH OAK AND TEAK DINING TABLE

CIRCA 1800, TOP AND BASE ASSOCIATED

The split navette-shaped oval top above a square spreading base on
concave-sided plinth with block feet
78 cm. high x 141 cm. wide x 97 cm. deep
€400-600 US\$550-820

891

**A PARCEL-GILT POLYCHROME DECORATED CARVED WOOD FOUR-
LIGHT CHANDELIER**

FIRST HALF 20TH CENTURY

Fitted for electricity
35 cm. high x 42.5 cm. diam.
€200-300 US\$280-410

895

SIX BROWN CURTAINS WITH MATCHING PELMETS

20TH CENTURY

Together with six ribbon ties and two draperies
Four curtains 27 cm. high 112 cm. wide; two curtains 292 cm. high x 150
cm. wide (6)
€150-200 US\$210-270

892

A PAIR OF DUTCH TOLE-PEINTE PEWTER CHESTNUT VASES

CIRCA 1830

32 cm. high
Together with a Dutch tole-peinte pewter 'kraantjeskan', 19th Century (3)
€1,200-1,600 US\$1,700-2,200

896

AN ERSARI CARPET

FIRST HALF 20TH CENTURY

The shaded red field with three columns of six guls
340 cm. x 233 cm.
Together with an Ersari rug, early 20th century, with two columns of three
guls and diagonally chequered skirt to each end - 93 cm. x 90 cm. (2)
€300-400 US\$420-550



895

890 (part lot)

889

891

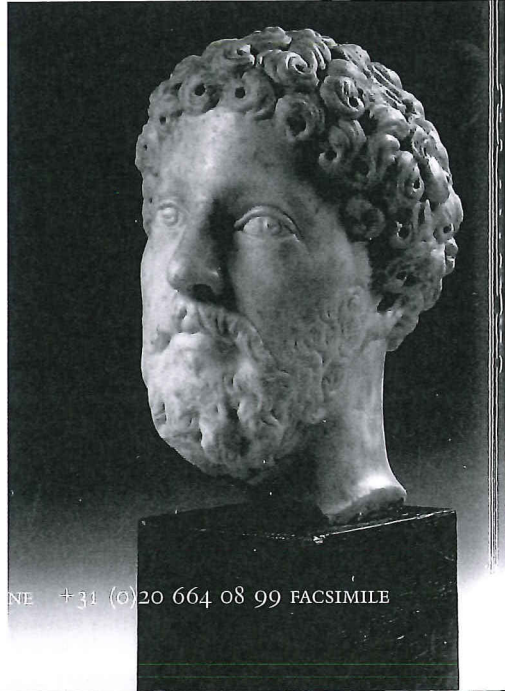
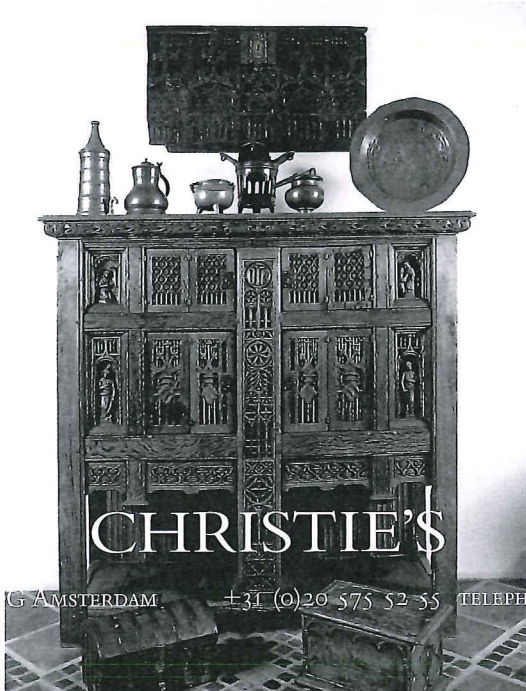
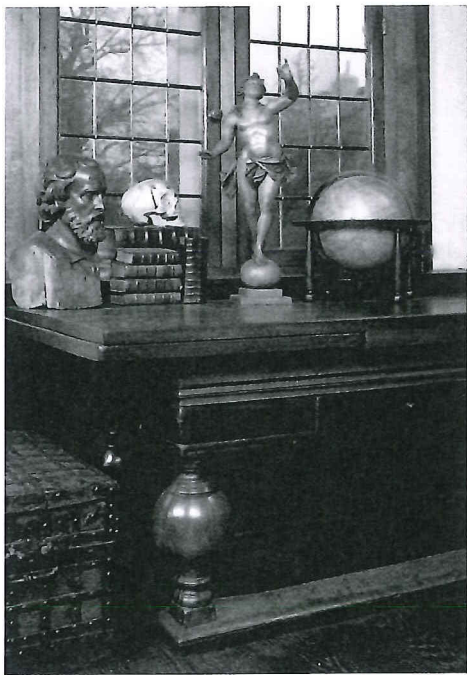
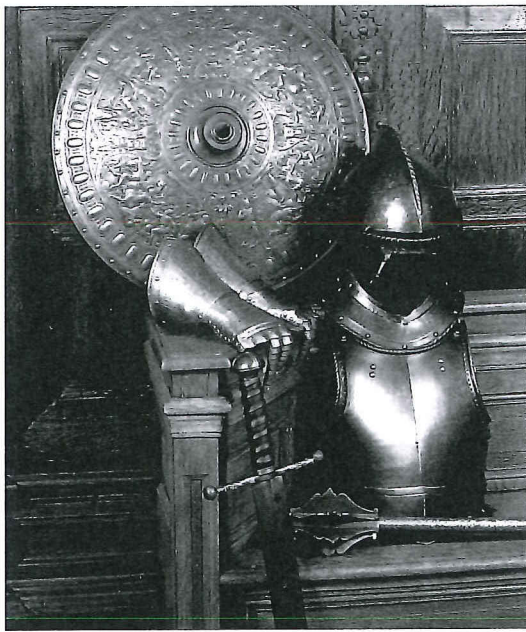
888

892

894

893 (part lot)

896 (part lot)



ORNELIS SCHUYTSTRAAT 57

CHRISTIE'S
G AMSTERDAM +31 (0)20 575 52-55 TELEPHONE +31 (0)20 664 08 99 FACSIMILE

CHRISTIE'S

PRINT

AUCTION RESULTS

The following prices in EUROS include the buyer's premium and are rounded to the nearest euro.
Lots which did not sell are not shown.

L ± 30%

Christie's is not responsible for typographical errors or omissions.

SALE # 2857
 SALE TITLE TWENTY ROOMS : THE PRIVATE COLL. OF THE LATE MRS. ELIAS-VAES
 SALE DATE Apr 27, 2010 - Apr 29, 2010
 SALE LOCATION Cornelis Schuytstraat 57, Amsterdam 1071 JG, Netherlands
 TELEPHONE +31 20 57 55 255
 SALE TOTAL 3,124,075

LOT	PRICE	LOT	PRICE	LOT	PRICE
1	1,625	2	4,000	3	2,250
4	3,500	5	2,500	6	5,625
7	2,000	7 A	1,250	8	1,063
9	3,000	10	6,000	11	3,500
12	5,000	13	4,750	14	6,250
14 A	4,000	15	3,250	15 A	2,125
16	3,500	17	2,750	18	4,375
19	3,000	20	5,250	21	10,000
22	4,750	23	6,250	24	17,500
25	5,000	27	16,250	29	1,500
30	6,000	31	1,625	32	3,500
33	4,750	34	3,000	34 A	2,500
34 B	4,375	35	13,750	36	7,500
37	15,000	38	1,875	39	3,750
40	2,000	40 A	4,625	41	1,250
42	1,375	43	1,000	44	2,000
45	2,750	46	1,625	47	2,500
48	1,375	49	2,250	50	4,000
51	4,750	52	11,875	53	6,000
54	18,750	55	1,375	56	2,750
57	2,250	58	1,250	59	4,750
60	9,375	61	3,000	62	5,250
63	4,375	64	3,000	65	2,375
66	3,500	67	2,750	68	3,500
69	3,750	70	1,750	71	1,750
72	2,000	73	4,375	74	4,750

75	2,250	76	3,750	77	5,000
78	1,625	79	2,500	80	2,750
81	2,500	82	5,000	83	6,000
84	3,750	85	438	87	1,750
88	563	89	750	90	1,375
91	1,625	92	4,000	93	750
95	3,750	96	1,063	97	2,250
97 A	5,625	97 B	6,000	97 C	2,375
97 D	10,000	98	5,625	99	4,375
100	3,250	101	2,250	102	9,375
103	1,125	104	2,125	105	2,375
106	4,000	107	5,250	108	3,250
109	2,750	110	2,500	111	1,250
112	3,500	113	3,000	114	1,875
115	1,250	116	1,188	117	2,250
118	2,750	119	2,500	120	1,875
121	5,000	122	1,375	124	3,000
125	1,500	127	3,250	128	15,000
129	625	130	6,250	131	3,500
134	5,625	135	1,625	136	1,250
137	1,375	138	500	139	1,125
140	938	141	5,000	142	1,500
143	2,000	144	1,750	147	250
148	2,125	149	1,188	150	375
151	938	153	1,063	154	1,875
156	3,250	157	1,375	158	1,375
159	938	160	1,063	161	938
162	3,250	163	87,400	164	13,750
166	813	167	1,625	168	688
169	7,500	170	1,063	171	7,500
172	2,500	173	3,250	174	563
174 A	625	175	10,625	176	3,500
177	1,000	178	563	179	1,375
180	2,750	181	1,625	181 A	500
183	4,000	184	1,063	185	2,000
186	3,250	187	750	188	138
190	1,000	191	1,500	192	2,250
193	775	195	3,000	196	938
197	1,375	198	2,375	199 A	3,000
200	1,375	201	875	202	16,250
204	1,875	205	1,125	206	375
207	1,063	208	3,250	209	1,375

210	6,875	211	1,750	212	438
213	1,875	214	1,375	215	1,875
216	1,000	218	750	220	1,500
221	325	222	313	223	1,500
225	5,000	226	4,750	228	10,000
229	2,500	231	10,000	237	1,125
238	21,250	239	4,375	240	7,500
243	1,375	244	938	245	400
246	1,125	247	875	248	250
249	275	250	625	251	1,250
252	1,125	252 A	375	253	1,250
254	1,500	255	4,375	257	3,250
258	2,750	259	2,375	261	3,750
262	625	263	32,200	264	3,250
265	1,063	267	1,375	268	2,375
269	3,000	270	525	271	3,000
274	10,000	275	750	276	1,125
278	875	279	1,375	280	500
281	750	282	438	283	1,250
284	375	286	2,125	287	138
288	250	289	1,000	290	4,375
291	175	293	625	294	2,000
295	3,000	296	3,500	297	688
299	813	300	3,500	301	5,000
302	1,063	303	3,000	304	7,500
305	3,000	306	3,875	307	6,875
308	2,250	309	1,875	310	1,500
311	11,875	312	1,750	313	1,500
314	1,500	315	1,625	316	4,000
317	6,875	318	1,375	319	6,875
320	3,250	321	750	322	1,375
323	2,500	324	3,000	325	2,250
326	2,000	327	1,375	328	2,125
329	4,750	330	1,500	331	1,750
332	1,188	333	3,000	334	5,250
335	875	336	1,625	337	5,250
338	20,000	339	2,500	340	2,500
341	2,750	342	1,625	343	1,000
344	813	345	1,375	346	4,375
347	3,000	348	2,750	349	375
350	2,125	351	2,000	352	7,500
353	2,125	354	4,750	356	813

357	6,875	358	1,625	359	2,250
360	2,125	361	7,500	362	3,000
363	1,875	364	1,375	365	3,000
366	3,250	367	6,000	368	813
369	4,000	370	1,063	371	2,375
371 A	688	372	1,750	375	2,875
376	2,750	377	1,875	378	813
379	1,625	380	34,600	381	4,000
382	4,750	383	1,125	384	625
385	4,000	387	1,063	389	1,625
390	2,500	391	2,250	392	688
393	2,500	394	2,375	395	3,000
396	18,750	397	4,000	398	4,000
400	875	401	875	403	1,125
404	10,000	407	8,125	408	3,750
409	7,500	410	3,000	411	5,000
414	2,500	415	8,125	416	3,750
417	<i>Ring</i> 350 ✓	418	3,750	419	2,125
421	2,500	422	2,750	423	2,375
424	350	425	10,000	426	2,000
427	7,250	428	2,750	429	5,625
430	188	431	6,250	432	1,750
433	4,000	434	2,250	436	6,250
437	5,250	438	1,250	439	8,750
440	9,375	441	4,750	442	12,500
443	1,375	444- <i>mgⁿ max</i>	1,250	445	3,000 ✓
446	250	447 <i>1,3 x 1</i>	8,750	448 <i>1,3 x 5</i>	13,750
450	4,375	451	1,500	453	2,500
454	813	455	10,000	456	6,000
457	4,000	458	5,250	460	938
461	3,125	462	7,750	463	4,375
464	3,750	465	525	466	6,000
467	1,500	468	4,000	469	1,875
470	2,375	471	8,125	473	4,000
474	1,063	476	37,000	479	5,250
480	2,750	481	1,188	482	1,750
483	1,875	484	1,375	485	250
486	875	489	4,000	490	625
491	1,188	492	1,063	493	5,250
494	2,375	495	500	496	2,750
497	3,000	498	4,500	499	1,000
500	13,750	501	3,500	502	3,750

503	3,000	504	5,250	505	8,750
506	813	507	875	508	750
509	2,000	510	1,875	512	2,375
514	563	515	1,375	516	1,750
517	2,500	518	1,375	519	5,625
520	400	521	1,250	522	1,125
523	8,750	524	2,375	525	1,875
526	4,000	527	1,000	528	3,250
529	3,000	530	500	531	938
532	1,625	533	88	534	1,063
535	2,375	536	3,125	537	325
538	188	539	625	540	63
541	938	542	4,500	543	625
544	1,063	545	375	546	75
547	938	548	1,188	549	525
550	188	551	625	552	2,375
554	1,750	555	1,375	556	1,500
557	1,375	559	5,625	560	3,000
561	188	562	325	563	750
564	3,000	567	1,375	568	1,625
569	2,125	570	688	571	475
572	250	573	600	574	6,250
575	8,125	576	4,000	577	3,750
578	8,125	579	8,125	581	2,000
582	3,750	583	3,000	584	1,375
586	2,750	587	1,625	588	1,500
589	813	590	1,125	591	3,500
592	500	593	938	594	3,750
595	2,375	596	2,125	597	1,500
598	2,750	599	2,250	600	1,750
601	1,500	602	1,375	603	375
604	2,375	605	813	607	3,000
608	3,250	609	3,500	609 A	2,125
610	1,500	613	3,500	614	2,750
615	17,500	618	1,250	619	11,250
620	8,750	621	1,000	622	6,250
623	1,875	624	4,750	625	625
626	2,125	629	688	632	313
633	375	634	10,000	635	750
636	1,750	637	138	638	750
640	2,375	641	1,250	642	2,125
643	2,750	644	4,750	645	9,375

646	1,375	647	1,625	648	1,375
649	938	650	4,000	651	1,500
652	750	654	688	655	688
657	1,000	658	438	659	1,125
660	813	661	2,750	662	1,250
663	563	664	688	665	1,750
666	813	667	875	668	6,250
669	125	670	350	671	3,750
672	5,625	673	3,500	674	3,250
675	2,250	676	2,125	677	1,500
678	1,875	679	1,000	680	2,000
681	1,625	682	2,125	683	2,500
684	2,000	685	875	686	475
688	1,188	689	4,750	690	475
692	250	693	275	694	1,625
696	313	697	1,000	698	375
699	250	700	2,500	701	1,875
702	750	703	125	704	475
705	500	706	500	707	563
708	2,750	709	325	710	875
711	1,063	712	625	713	875
714	1,500	715	1,188	716	813
717	2,875	718	2,750	720	1,500
721	875	722	375	723	1,063
724	1,250	726	375	727	313
728	1,563	730	21,250	733	225
734	688	735	375	736	688
737	1,750	738	1,250	739	1,625
740	5,000	741	3,250	742	1,000
743	525	744	688	745	2,750
747	1,375	749	16,250	750	1,500
752	813	753	1,125	754	8,125
755	3,000	758	1,500	759	4,375
761	1,000	762	1,375	763	500
764	6,000	766	500	767	400
768	5,625	771	688	772	438
773	1,500	774	325	775	3,250
776	688	777	4,750	780	2,500
781	3,250	782	2,375	783	3,750
784	2,750	785	1,063	786	1,875
787	1,000	788	2,125	789	325
790	188	791	1,000	792	3,125

730 \rightarrow $\frac{1.3}{1.6} \times 21,250 = 20,800$
 735 \rightarrow $20,800 - 375 = 20,425$

793	6,000	794	2,750	795	2,375
796	938	797	600	798	438
799	600	800	1,375	801	8,750
802	938	803	1,500	804	1,500
805	525	806	188	807	400
808	750	809	250	810	600
812	5,250	814	375	815	625
816	438	817	1,750	819	875
820	750	823	4,375	825	2,000
826	1,375	826 A	1,875	827	375
828	1,500	829	2,125	830	1,000
831	1,500	834	8,125	835	2,375
836	15,000	837	4,750	838	3,500
839	3,000	840	15,000	841	2,500
842	1,875	843	3,000	844	1,125
845	2,500	846	1,750	847	3,000
848	1,500	849	4,375	850	2,750
851	2,500	852	1,375	853	688
854	1,188	855	1,250	856	875
857	5,250	858	813	859	3,250
860	4,375	861	3,750	862	525
863	500	864	500	865	300
866	3,750	867	1,625	869	1,000
870	1,250	871	3,750	872	3,250
873	11,250	874	1,250	875	475
876	1,063	877	400	878	1,625
879	1,875	880	500	881	5,000
882	2,250	883	813	884	2,375
885	2,500	886	4,750	887	2,125
888	6,250	889	1,500	890	188
891	125	892	1,500	893	750
894	500	895	50	896	275
897	1,250	898	1,250	899	3,250
900	150	901	1,063	902	4,375
903	4,375	904	2,250	905	7,500
906	125	908	1,375	909	600
910	625	911	1,375	912	1,000
913	525	914	2,375	915	2,000
916	8,750	917	2,250	919	1,125
920	1,375	921	1,250	922	1,875
923	4,375	924	475	926	1,500
927	563	928	1,250	929	750

Auction Results

930	938	931	8,125	932	1,375
933	2,000	934	1,125	935	938
937	63	938	1,000	939	1,000
940	938	941	6,000	942	813
943	32,200	944	1,250	947	4,000
948	525	949	125	950	1,000
951	8,125	952	3,500	953	1,375
954	1,000	955	1,875	956	1,250
957	938	958	2,250	959	6,875
960	1,063	961	438	962	4,750
963	600	964	8,750	965	5,250
966	2,125	967	1,500	968	1,188
969	2,750	970	6,000	971	3,250
972	1,625	973	688	974	1,500
975	1,625	976	1,000	977	2,125
978	563	979	750	980	250
981	1,625	982	375	983	3,375
985	5,000	986	400	987	875
987 A	813	988	563	989	813
990	875	991	750	992	2,000
993	500	994	1,000	995	4,375
996	6,875	997	3,500	997 A	33,400
998	4,750	999	813	1000	34,600
1001	875	1002	1,625	1004	1,188
1005	1,625	1006	4,500	1007	5,000
1008	1,750	1009	1,125	1010	600
1011	688	1012	1,500	1014	125
1015	813	1016	2,000	1017	5,625
1018	1,875	1019	1,375	1020	2,000
1021	3,750	1022	6,000	1023	4,375
1024	1,750	1025	2,250	1026	1,500
1027	13,750	1028	3,000	1029	3,000
1030	1,875	1031	3,500	1032	63
1033	1,625	1034	1,375	1035	1,500
1036	2,750	1037	5,625	1038	6,000
1039	2,000	1040	1,125	1041	3,250
1042	4,375	1043	3,250	1047	1,500
1048	5,625	1049	500	1050	2,750
1051	2,125	1052	1,000	1053	813
1054	475	1055	2,250	1056	500
1057	350	1058	188	1059	1,000
1060	3,500	1061	250	1062	138

1063	1,250	1064	150	1065	1,125
1066	525	1067	1,375	1068	1,250
1069	188	1070	600	1071	750
1072	500	1073	1,063	1074	3,000
1075	2,750	1076	938	1077	1,625
1078	375	1079	563	1080	525
1081	400	1082	188	1083	188
1084	100	1085	475	1086	325
1087	688	1088	188	1089	1,875
1090	300	1091	875	1092	188
1093	438	1094	813	1095	275
1096	1,375	1097	100	1098	225
1099	113	1100	688	1101	3,250
1102	1,625	1103	750	1103 A	1,625
1104	625	1105	5,000	1106	325
1107	475	1108	375	1109	225
1110	1,375	1111	525	1112	1,750
1114	1,500	1115	500	1116	138
1117	625	1118	1,875	1119	500
1120	1,375	1120 A	325	1121	350
1122	375	1123	300	1124	94
1125	1,188	1126	2,875	1127	1,375
1128	475	1129	138	1130	188
1131	7,500	1132	125	1133	63
1134	750	1135	1,875	1136	138
1138	600	1139	188	1141	325
1143	275	1144	2,250	1145	2,500
1146	325	1148	500	1149	500
1150	9,375	1151	250	1152	2,750
1153	400	1155	250	1156	375
1157	3,000	1158	500	1159	1,063
1160	600	1161	94	1162	2,500
1163	3,750	1164	188	1165	5,125
1166	563	1167	688	1168	813
1170	625	1171	1,063	1172	813
1173	1,375	1174	2,125	1175	6,250
1176	13,750	1177	31	1178	3,000
1179	3,250	1180	563	1181	1,375
1182	5,250	1183	2,250	1184	938
1185	1,625	1186	1,750	1187	2,125
1188	3,750	1189	400	1190	2,500
1191	813	1192	938	1193	875

1194	2,375	1195	1,875	1195 A	438
1198	438	1199	938	1200	500
1201	275	1202	31	1203	688
1205	525	1206	63	1207	250
1208	50	1209	125	1210	1,500
1211	600	1212	500	1213	1,750
1214	1,000	1215	475	1216	400
1217	4,000	1218	5,250	1219	3,000
1220	688	1221	375	1222	813
1223	275	1224	250	1225	5,000
1226	1,250	1227	1,875	1228	1,500
1229	1,625	1230	1,375	1231	4,000
1232	688	1233	2,500	1234	3,000
1235	875	1236	2,500		